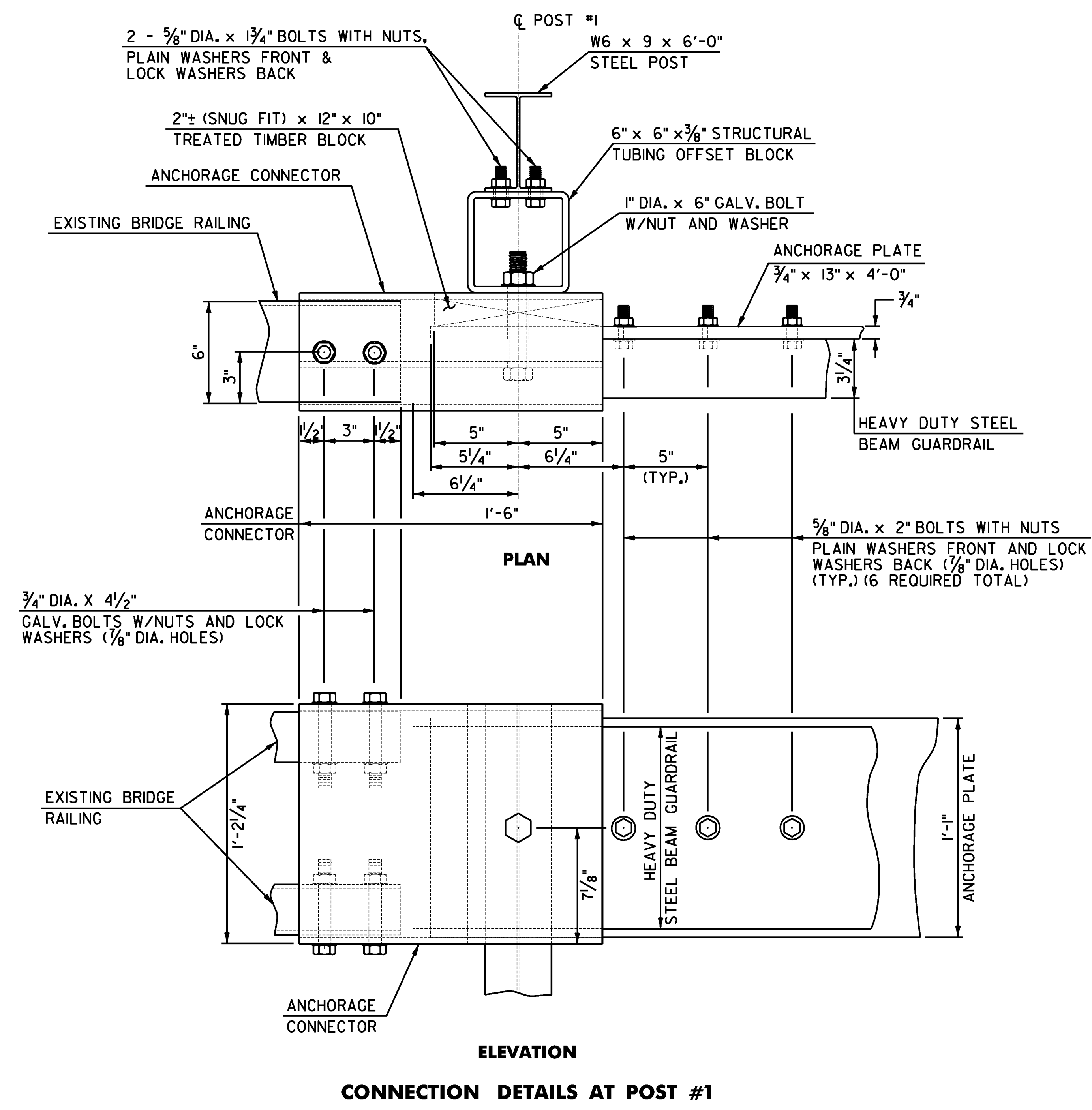
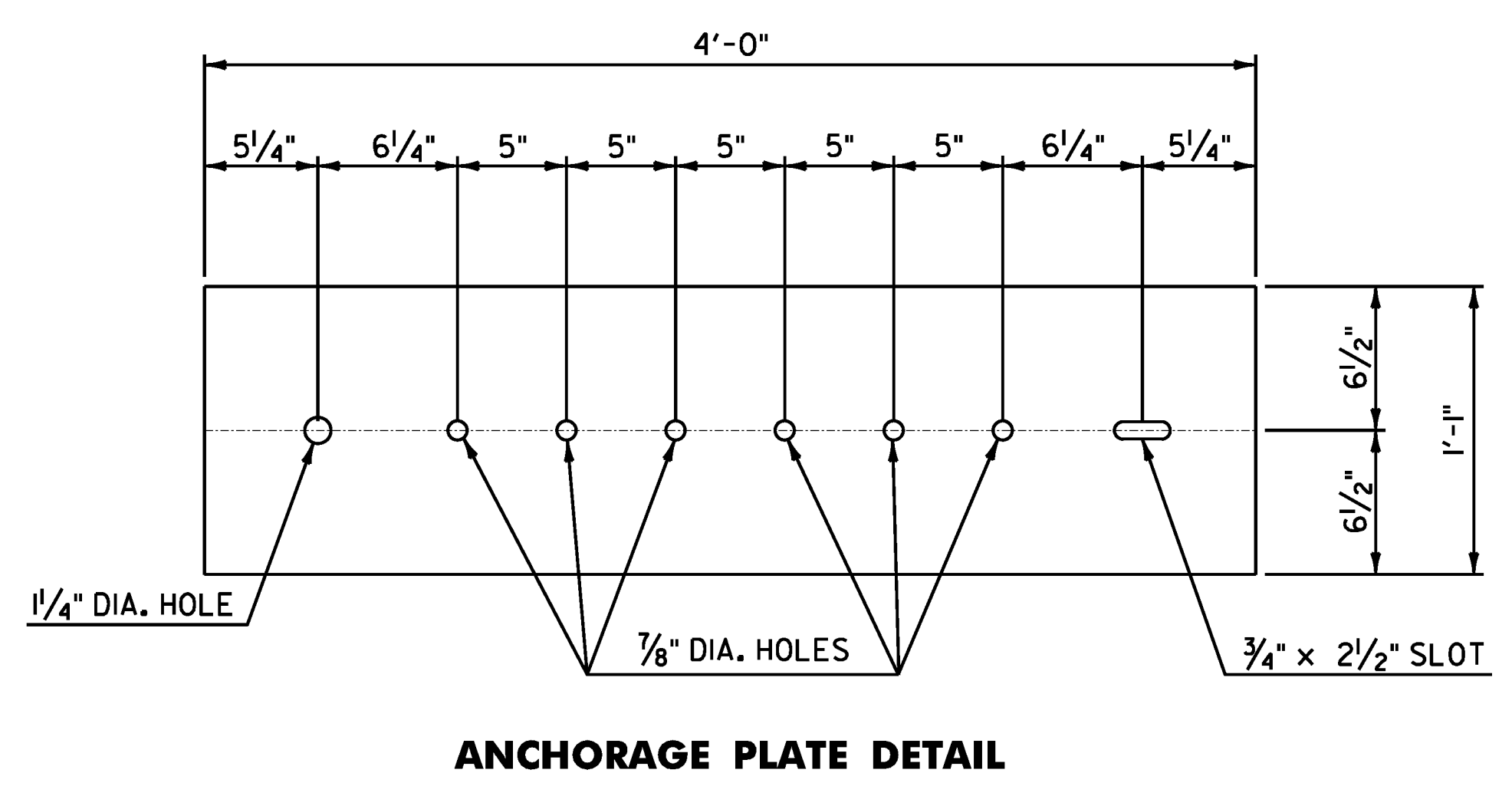


NOTES

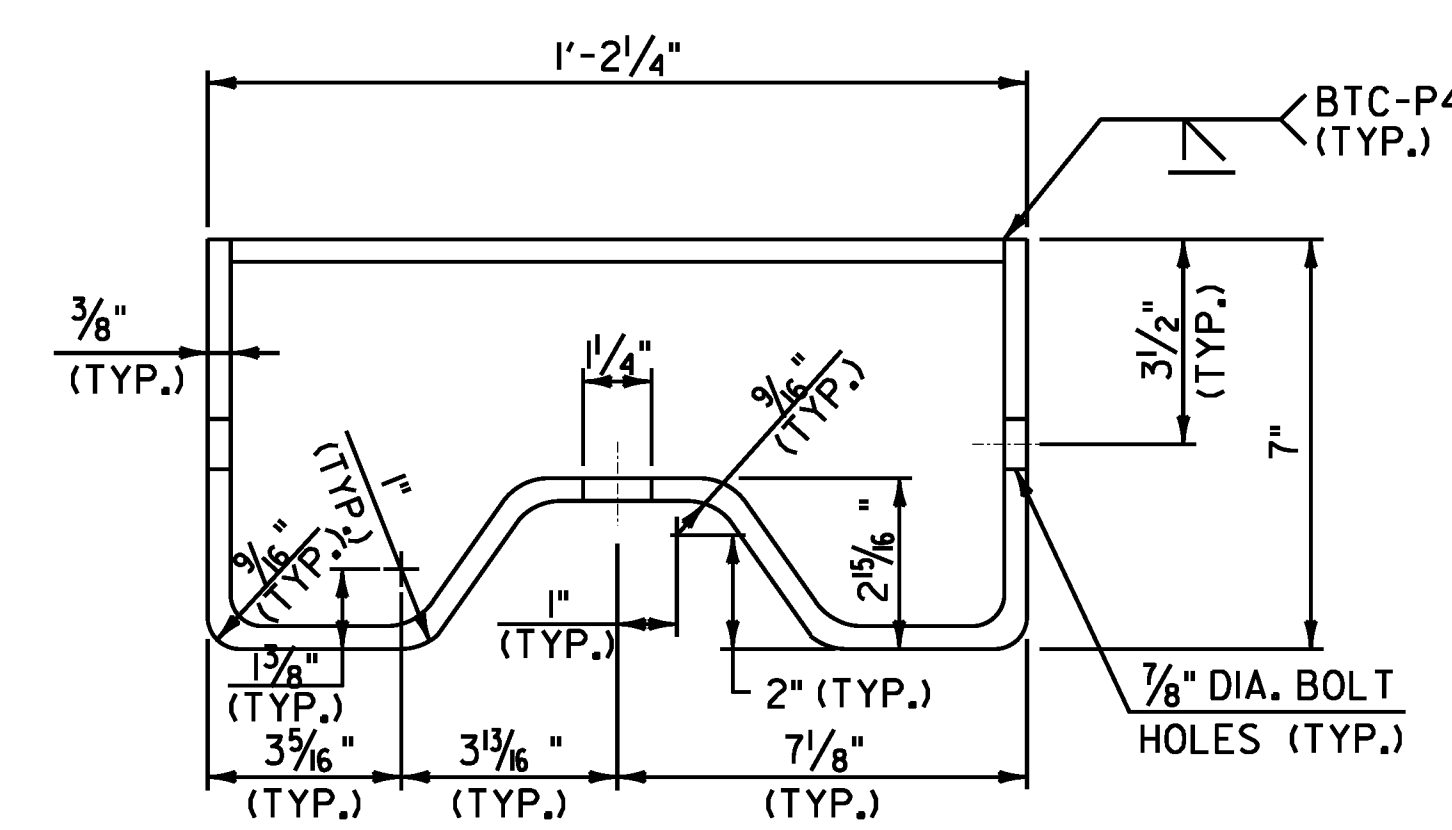
1. REFER TO VTRANS STANDARD G-1 FOR ADDITIONAL RAIL DETAILS.
2. ALL POSTS FOR HEAVY DUTY STEEL BEAM GUARDRAIL SHALL BE STEEL IN ACCORDANCE WITH SUBSECTION 728.01(c) UNLESS OTHERWISE SPECIFIED IN THE CONTRACT.
3. APPROACH RAIL SPLICES SHALL LAP IN DIRECTION OF TRAFFIC FLOW.
4. ANCHORAGE CONNECTOR AND ANCHORAGE PLATE SHALL CONFORM TO SUBSECTION 728.01(c).
5. ALL BOLTS, NUTS AND WASHERS SHALL CONFORM TO SUBSECTION 728.03(c).
6. STRUCTURAL TUBING OFFSET BLOCK SHALL CONFORM TO SUBSECTION 728.01(c).
7. APPROACH RAILING SHALL BE HEAVY DUTY STEEL BEAM FOR 50'-0" FROM THE \bar{C} OF POST #1 FOR TYPE I AND 12'-6" FROM THE \bar{C} OF POST #1 FOR TYPE II.
8. ALLOWABLE DIMENSIONAL TOLERANCE FOR BENT SECTIONS IS $\pm 1/16"$.
9. THE UNIT PRICES BID FOR EITHER TYPE OF GUARDRAIL APPROACH SECTION SHALL INCLUDE ANCHORAGE CONNECTOR, ANCHORAGE PLATE, HEAVY DUTY STEEL BEAM GUARDRAIL, POSTS, OFFSET BLOCKS, BLOCKING, BOLTS, AND ALL NECESSARY HARDWARE.



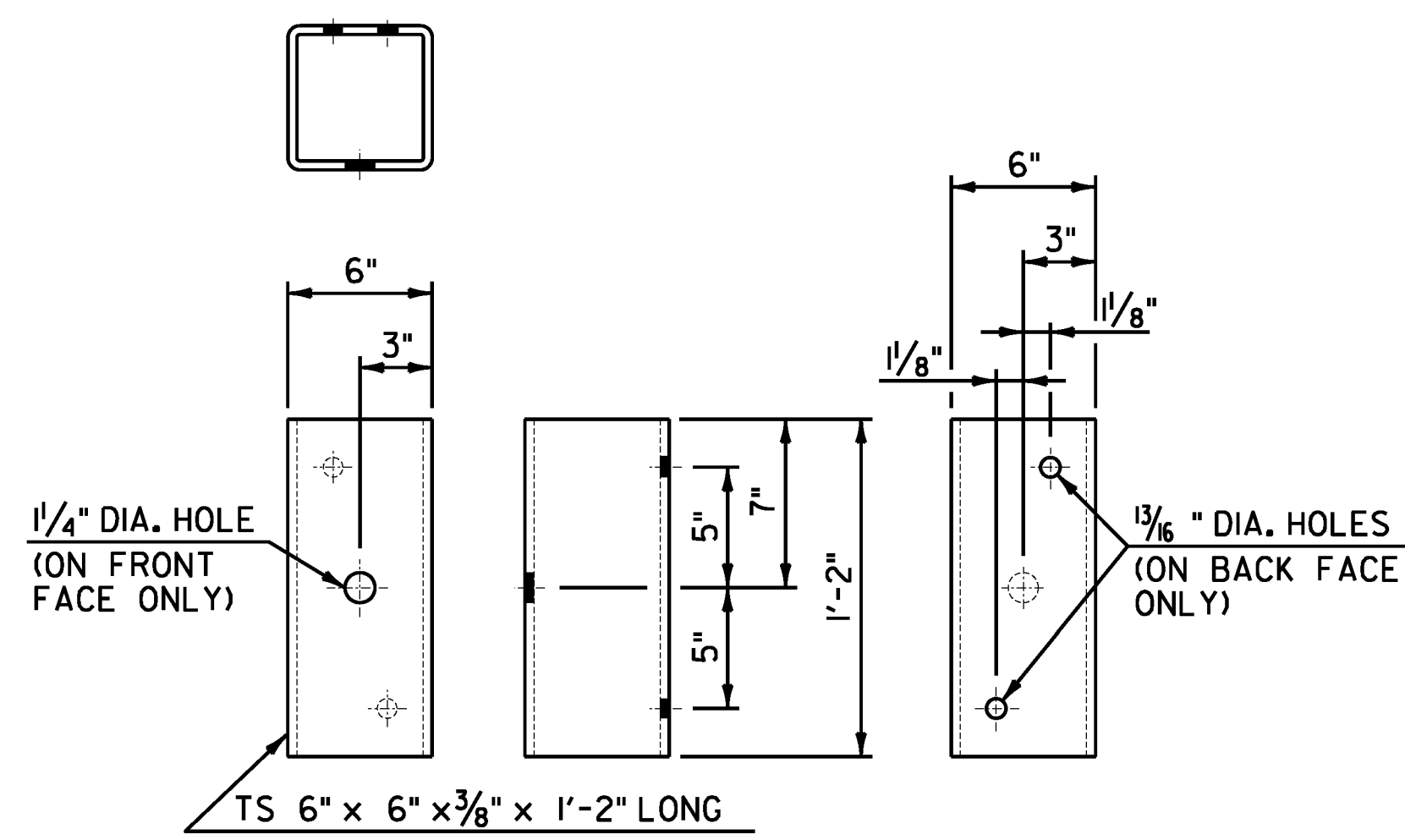
CONNECTION DETAILS AT POST #1



ANCHORAGE PLATE DETAIL



ANCHORAGE CONNECTOR DETAIL
(SEE NOTE 8)



STRUCTURAL TUBING OFFSET BLOCK DETAILS
(OCCURS AT POST #1 WHEN USING APPROACH RAIL UTILIZING STEEL POSTS)

NOTE:
1. REFERENCE THIS SHEET WITH SHEET 392 ALONG WITH SHEET 395 FOR BR 1 DETAILS AND SHEET 397 FOR BR 12 DETAILS.

GUARDRAIL APPROACH SECTION DETAIL SHEET #2	PROJECT NAME: STOCKBRIDGE-BETHEL	PLOT DATE: 3/17/2014
	PROJECT NUMBER: STP 2910(1)	DRAWN BY: W.G.P.
	FILE NAME: z10b214_gr_apr_02.dgn	DESIGNED BY: L.M.B.
	IPARM FILE: z10b214qas2.1	CHECKED BY: J.P.S.
		SHEET 393 OF 397

FILE NAME = V:\P\c\gr\ap\any\k2\22425\CA001.MSTN\10b214_gr_apr_02.dgn
DATE/TIME = 3/17/2014
USER = 4916