

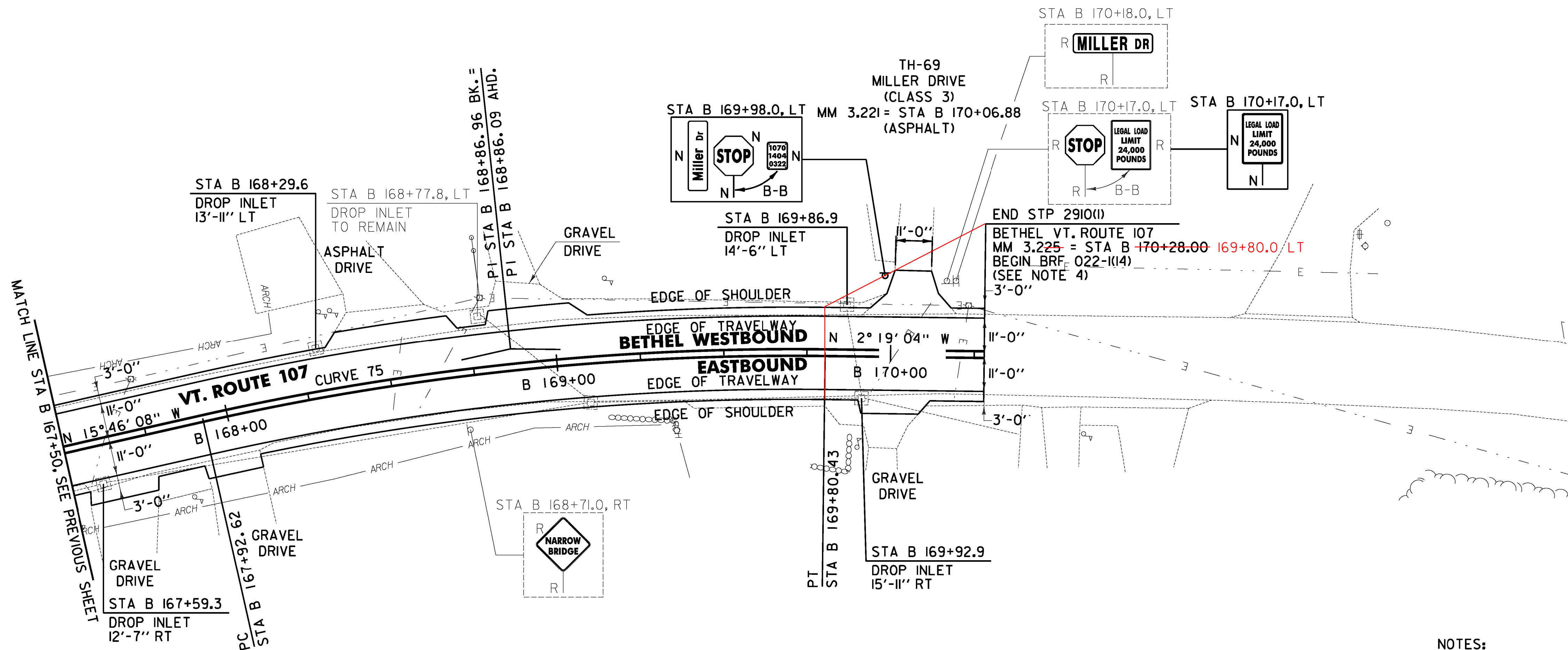
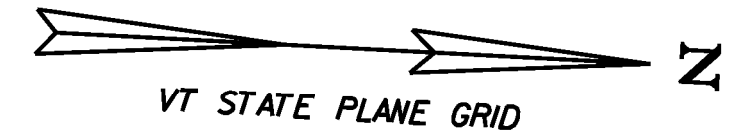
~~646.402 DURABLE 4 INCH WHITE LINE, THERMOPLASTIC OR~~
~~646.404 DURABLE 4 INCH WHITE LINE, POLYUREA~~
 (ALL LINES WILL INCLUDE EDGE LINE BREAKS AND RADIUS FOR TOWN HIGHWAYS)
 BETHEL:
 STA B 167+50.00 - STA B 170+28.00 LT & RT

646.602 TEMPORARY 4 INCH WHITE LINE, PAINT
 (ALL LINES WILL INCLUDE EDGE LINE BREAKS AND RADIUS FOR TOWN HIGHWAYS)
 BETHEL:
 STA B 167+50.00 - STA B 170+28.00 LT & RT

675.50 REMOVING SIGNS
 AS SHOWN - 4

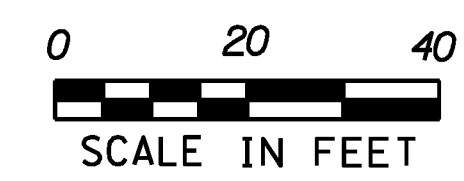
646.414 DURABLE 4 INCH YELLOW LINE, POLYUREA
 (ALL LINES WILL INCLUDE C/L BREAKS FOR TOWN HIGHWAYS) S=SOLID, D=DASHED
 BETHEL: LT C RT
 STA B 167+50.00 - STA B 170+28.00 S - S

646.612 TEMPORARY 4 INCH YELLOW LINE, PAINT
 (ALL LINES WILL INCLUDE C/L BREAKS FOR TOWN HIGHWAYS) S=SOLID, D=DASHED
 BETHEL: LT C RT
 STA B 167+50.00 - STA B 170+28.00 S - S



NOTES:

- PAVING LIMIT ON ALL TOWN HIGHWAYS SHALL BE MEASURED 25 FT BACK FROM VT. ROUTE 107 EDGE OF SHOULDER UNLESS DENOTED OTHERWISE ON THE PLANS OR AS DIRECTED BY THE ENGINEER.
- THE CONTRACTOR SHALL REHABILITATE THE EXISTING DROP INLETS, CATCH BASINS OR MANHOLES TO A DEPTH AS DIRECTED BY THE ENGINEER. ALL REHABILITATION WORK WILL BE PAID FOR UNDER THE APPLICABLE REHABILITATION ITEM AS DIRECTED BY THE ENGINEER. ALL EXISTING UTILITIES MARKED "TO REMAIN" SHALL NOT BE ALTERED OR REHABILITATED UNLESS DIRECTED OTHERWISE BY THE ENGINEER.
- THE CONTRACTOR SHALL BE AWARE THAT AN UNDERGROUND FIBER OPTIC FACILITY EXISTS ALONG VT 107. THE LOCATION SHOWN ON THE PLANS IS APPROXIMATE, AND THE POTENTIAL EXISTS FOR CONFLICTS WITH THE FIBER OPTIC AND THE PROPOSED UNDERDRAIN AT VARIOUS LOCATIONS THROUGHOUT THE PROJECT. THE CONTRACTOR IS ADVISED THAT, PRIOR TO CONSTRUCTION, ALL PROPOSED UNDERDRAIN LOCATIONS SHALL BE FIELD VERIFIED WITH THE ENGINEER AND RELOCATED AS NECESSARY TO ELIMINATE ANY CONFLICTS WITH THE FIBER OPTIC FACILITY.
- SEE SHEET 22 FOR RECLAIMED APPROACH AREA DETAILS.



604.412, 604.415, 604.418 REHAB. DROP INLETS, CATCH BASINS, OR MANHOLES CLASS I, II, OR III (SEE NOTE 2)
 BETHEL:
 STA B 167+59.3 RT STA B 169+07.0 RT
 STA B 168+29.6 LT STA B 168+78.0 LT
 STA B 169+86.9 LT
 STA B 169+92.9 RT

CURVE 75
 $\Delta = 13^\circ 27' 04''$
 $D = 7^\circ 09' 43''$
 $R = 800.00'$
 $T = 94.34'$
 $L = 187.81'$
 $E = 5.54'$
 $e = NC$

SIGN LEGEND
 R = REMOVE
 S = SALVAGE
 N = NEW
 RET = RETAIN
 B-B = BACK TO BACK
 EXISTING = -----
 NEW = _____

PROJECT LAYOUT SHEET #88	PROJECT NAME: STOCKBRIDGE-BETHEL	
	PROJECT NUMBER: STP 2910(1)	
	FILE NAME: z10b214_bdr_nul.88.dgn	PLOT DATE: 3/17/2014
	PROJECT LEADER: D.E.G.	DRAWN BY: W.G.P.
	DESIGNED BY: L.M.B.	CHECKED BY: J.P.S.
	IPARM FILE: z10b214188.1	SHEET 121 OF 397

FILE NAME = V:\Projects\104\10422426\CADD\10422426\10422426.dwg
 DATE = 3/17/2014
 USER = J.P.S.