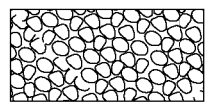


LEGEND
 ITEM 613.10 STONE FILL, TYPE I

~~646.402 DURABLE 4 INCH WHITE LINE, THERMOPLASTIC OR~~
~~646.404 DURABLE 4 INCH WHITE LINE, POLYUREA~~
 (ALL LINES WILL INCLUDE EDGE LINE BREAKS AND RADIUS FOR TOWN HIGHWAYS)
 BETHEL:
 STA B 149+50.00 - STA B 155+50.00 LT & RT

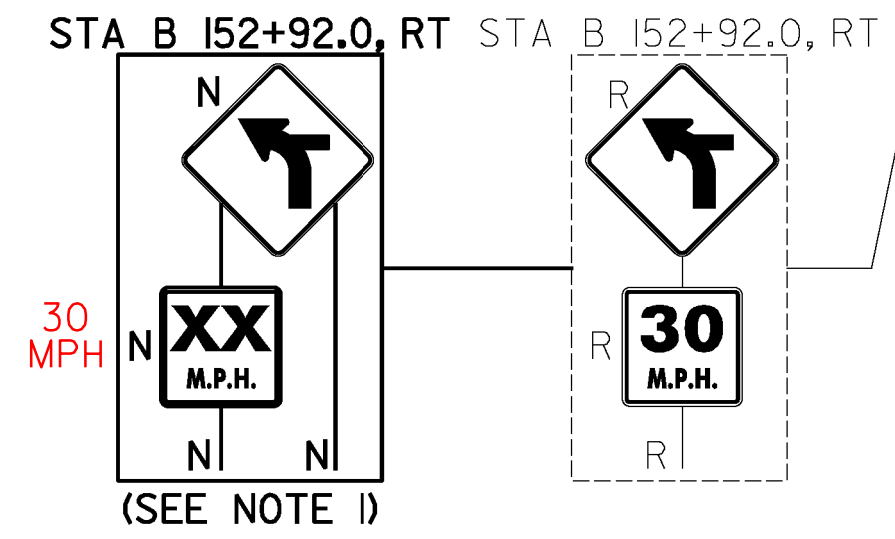
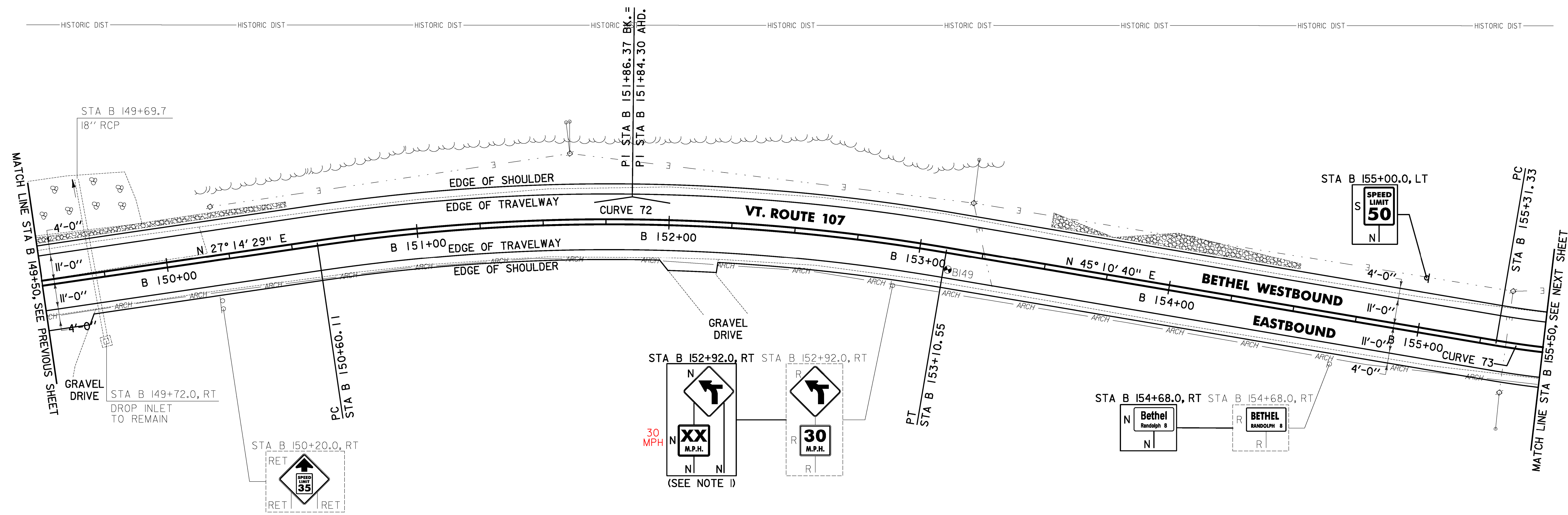
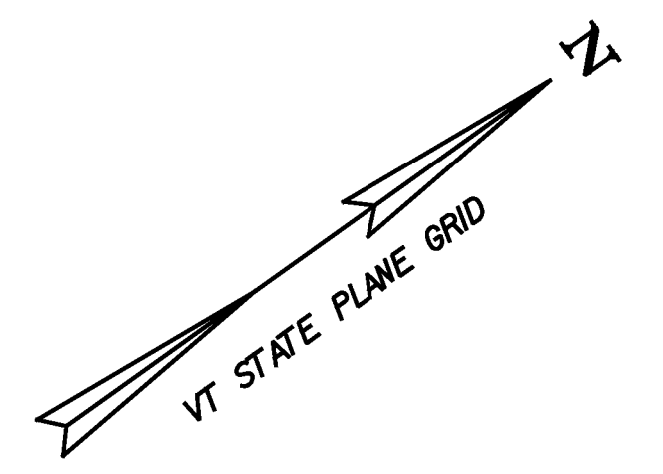
646.602 TEMPORARY 4 INCH WHITE LINE, PAINT
 (ALL LINES WILL INCLUDE EDGE LINE BREAKS AND RADIUS FOR TOWN HIGHWAYS)
 BETHEL:
 STA B 149+50.00 - STA B 155+50.00 LT & RT

~~213.10 MILLED RUMBLE STRIPS~~
~~(ALL CLRS WILL INCLUDE C/L BREAKS FOR TOWN HIGHWAYS)~~
~~BETHEL:~~
~~STA B 149+50.0 - STA B 151+75.0 C/L (225.0 LF)~~

675.50 REMOVING SIGNS AS SHOWN - 3
 675.60 ERECTING SALVAGED SIGNS AS SHOWN - 1

646.414 DURABLE 4 INCH YELLOW LINE, POLYUREA
 (ALL LINES WILL INCLUDE C/L BREAKS FOR TOWN HIGHWAYS) S=SOLID, D=DASHED
 BETHEL:
 STA B 149+50.00 - STA B 155+50.00 LT S RT S

646.612 TEMPORARY 4 INCH YELLOW LINE, PAINT
 (ALL LINES WILL INCLUDE C/L BREAKS FOR TOWN HIGHWAYS) S=SOLID, D=DASHED
 BETHEL:
 STA B 149+50.00 - STA B 155+50.00 LT S RT S



SOIL BORING DATA			
BORING #	DEPTH (FT.)	PCC	COMMENTS
B149	5.0	NO	

NOTES:

1. THE ADVISORY SPEED SHALL BE DETERMINED USING AN ESTABLISHED ENGINEERING PRACTICE AS LISTED IN SECTION 2C.08 OF THE MUTCD.
2. THE CONTRACTOR SHALL BE AWARE THAT AN UNDERGROUND FIBER OPTIC FACILITY EXISTS ALONG VT 107. THE LOCATION SHOWN ON THE PLANS IS APPROXIMATE, AND THE POTENTIAL EXISTS FOR CONFLICTS WITH THE FIBER OPTIC AND THE PROPOSED UNDERDRAIN AT VARIOUS LOCATIONS THROUGHOUT THE PROJECT. THE CONTRACTOR IS ADVISED THAT, PRIOR TO CONSTRUCTION, ALL PROPOSED UNDERDRAIN LOCATIONS SHALL BE FIELD VERIFIED WITH THE ENGINEER AND RELOCATED AS NECESSARY TO ELIMINATE ANY CONFLICTS WITH THE FIBER OPTIC FACILITY.

613.10 STONE FILL, TYPE I
 BETHEL: 149+86.0 - 150+66.0
 STA B 149+50.0 - STA B 150+50.0 LT (14.3 CY)
 STA B 153+50.0 - STA B 154+50.0 LT (29.8 CY)
 153+30.0

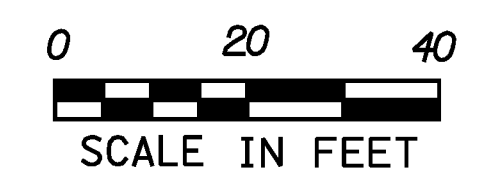
651.40 GRUBBING MATERIAL (6")
 BETHEL: 149+86.0 - 150+66.0
 STA B 149+50.0 - STA B 150+50.0 LT (31.2 SY)
 STA B 153+50.0 - STA B 154+50.0 LT (76.4 SY)
 153+30.0

653.20 TEMPORARY EROSION MATTING
 BETHEL:
 STA B 149+50.0 - STA B 150+50.0 LT (31.2 SY)
 STA B 153+50.0 - STA B 154+50.0 LT (76.4 SY)

CURVE 72
 $\Delta = 17^{\circ} 56' 11''$
 $D = 7^{\circ} 09' 43''$
 $R = 800.00'$
 $T = 126.25'$
 $L = 250.44'$
 $E = 9.90'$
 $e = 0.080 \text{ FT/FT}$

CURVE 73
 $\Delta = 57^{\circ} 57' 25''$
 $D = 15^{\circ} 16' 44''$
 $R = 375.00'$
 $T = 207.68'$
 $L = 379.33'$
 $E = 53.67'$
 $e = 0.060 \text{ FT/FT}$

SIGN LEGEND
 R = REMOVE
 S = SALVAGE
 N = NEW
 RET = RETAIN
 B-B = BACK TO BACK
 EXIST = _____
 NEW = _____



PROJECT LAYOUT SHEET #85	PROJECT NAME: STOCKBRIDGE-BETHEL	PLOT DATE: 4/18/2014
	PROJECT NUMBER: STP 2910(1)	DRAWN BY: W.G.P.
	FILE NAME: z10b214_bdr_nul_85.dgn	CHECKED BY: J.P.S.
	PROJECT LEADER: D.E.G.	SHEET 118 OF 397
	DESIGNED BY: L.M.B.	
	IPARM FILE: z10b214185.1	

FILE NAME = V:\1572\1572.dwg
 USER = J.P.S.
 DATE = 4/18/2014