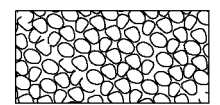


**LEGEND**  
 ITEM 613.10 STONE FILL, TYPE I

~~646.402 DURABLE 4 INCH WHITE LINE, THERMOPLASTIC OR~~  
~~646.404 DURABLE 4 INCH WHITE LINE, POLYUREA~~  
 (ALL LINES WILL INCLUDE EDGE LINE BREAKS AND RADIUS FOR TOWN HIGHWAYS)  
 BETHEL:  
 STA B 143+50.00 - STA B 149+50.00 LT & RT

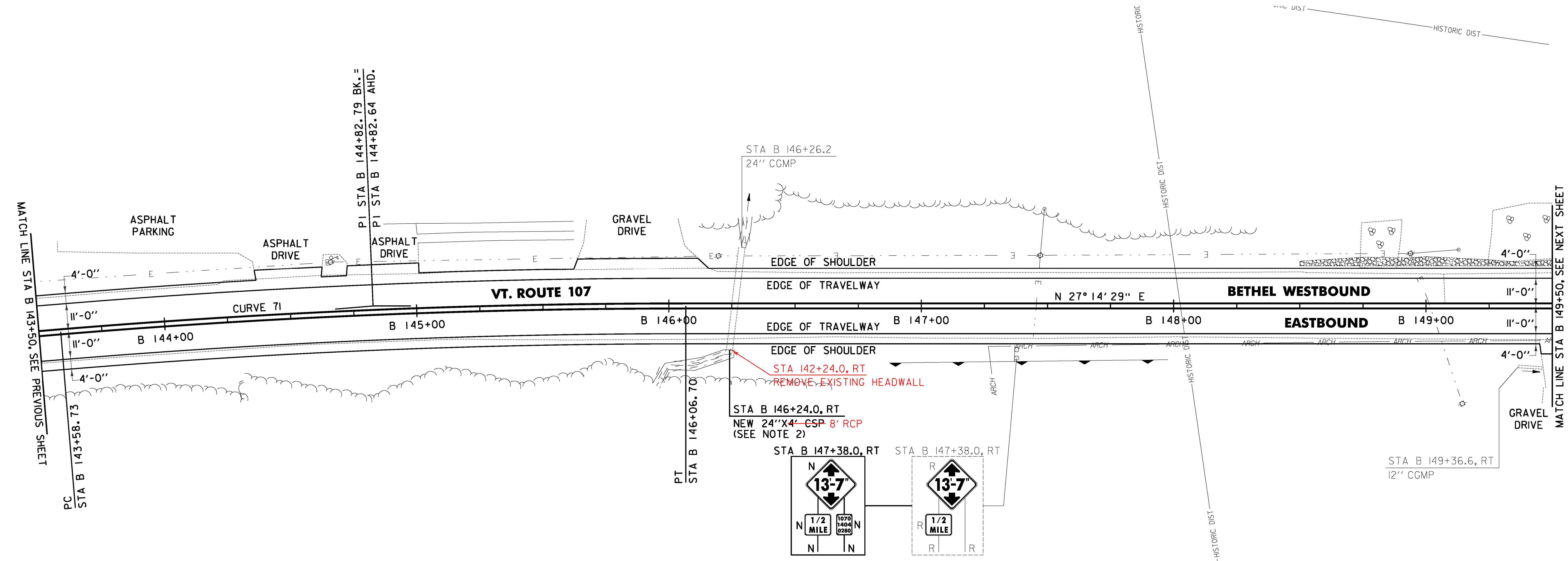
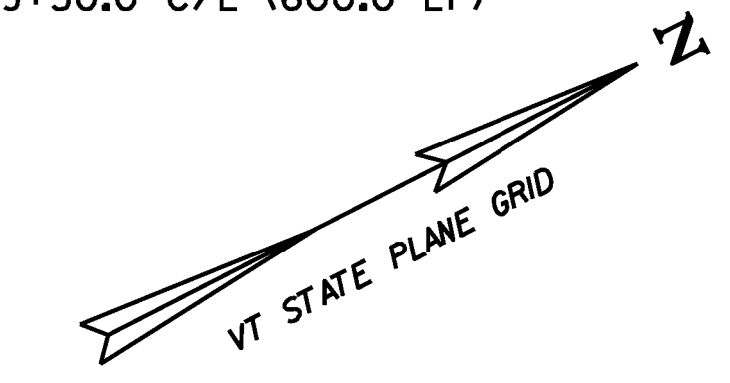
646.602 TEMPORARY 4 INCH WHITE LINE, PAINT  
 (ALL LINES WILL INCLUDE EDGE LINE BREAKS AND RADIUS FOR TOWN HIGHWAYS)  
 BETHEL:  
 STA B 143+50.00 - STA B 149+50.00 LT & RT

213.10 MILLED RUMBLE STRIPS  
 (ALL CLRS WILL INCLUDE C/L BREAKS FOR TOWN HIGHWAYS)  
 BETHEL:  
 STA B 143+50.0 - STA B 149+50.0 C/L (600.0 LF)

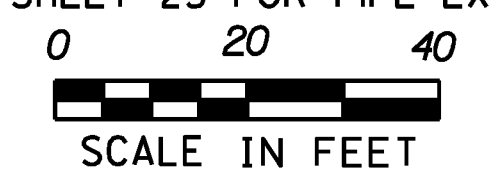
675.50 REMOVING SIGNS AS SHOWN - 2

646.414 DURABLE 4 INCH YELLOW LINE, POLYUREA  
 (ALL LINES WILL INCLUDE C/L BREAKS FOR TOWN HIGHWAYS) S=SOLID, D=DASHED  
 BETHEL: LT C RT  
 S - S

646.612 TEMPORARY 4 INCH YELLOW LINE, PAINT  
 (ALL LINES WILL INCLUDE C/L BREAKS FOR TOWN HIGHWAYS) S=SOLID, D=DASHED  
 BETHEL: LT C RT  
 S - S



**NOTES:**  
 1. THE CONTRACTOR SHALL BE AWARE THAT AN UNDERGROUND FIBER OPTIC FACILITY EXISTS ALONG VT 107. THE LOCATION SHOWN ON THE PLANS IS APPROXIMATE, AND THE POTENTIAL EXISTS FOR CONFLICTS WITH THE FIBER OPTIC AND THE PROPOSED UNDERDRAIN AT VARIOUS LOCATIONS THROUGHOUT THE PROJECT. THE CONTRACTOR IS ADVISED THAT, PRIOR TO CONSTRUCTION, ALL PROPOSED UNDERDRAIN LOCATIONS SHALL BE FIELD VERIFIED WITH THE ENGINEER AND RELOCATED AS NECESSARY TO ELIMINATE ANY CONFLICTS WITH THE FIBER OPTIC FACILITY.  
 2. SEE SHEET 25 FOR PIPE EXTENSION DETAIL FOR METAL PIPES.



**613.10 STONE FILL, TYPE I**  
 BETHEL: 148+32.0 149+17.0  
 STA B 148+50.0 - STA B 149+50.0 LT (19.1 CY)  
 STA B 145+90.0 - STA B 196+97.0 RT  
**651.40 GRUBBING MATERIAL (6")**  
 BETHEL: 148+32.0 149+17.0  
 STA B 148+50.0 - STA B 149+50.0 LT (44.7 SY)  
**653.20 TEMPORARY EROSION MATTING**  
 BETHEL:  
 STA B 144+50.0 - STA B 145+00.0 RT (7.5 SY)  
 STA B 148+50.0 - STA B 149+50.0 LT (44.7 SY)

**CURVE 71**  
 $\Delta = 4^{\circ} 44' 09''$   
 $D = 1^{\circ} 54' 35''$   
 $R = 3000.00'$   
 $L = 124.06'$   
 $T = 247.97'$   
 $E = 2.56'$   
 $e = 0.038 \text{ FT/FT}$

**SIGN LEGEND**  
 R = REMOVE  
 S = SALVAGE  
 N = NEW  
 RET = RETAIN  
 B-B = BACK TO BACK  
 EXISTING = -----  
 NEW = \_\_\_\_\_

<b>PROJECT LAYOUT SHEET #84</b>	PROJECT NAME: STOCKBRIDGE-BETHEL
	PROJECT NUMBER: STP 2910(1)
FILE NAME: z10b214_bdr_nul.84.dgn	PLOT DATE: 3/17/2014
DESIGNED BY: L.M.B.	DRAWN BY: W.G.P.
IPARM FILE: z10b214184.1	CHECKED BY: J.P.S.
	SHEET 117 OF 397

FILE NAME: V:\Projects\2014\22426\CADD\1\STN\z10b214\_bdr\_nul.84.dgn  
 DATE: 3/17/2014  
 USER: JLR