

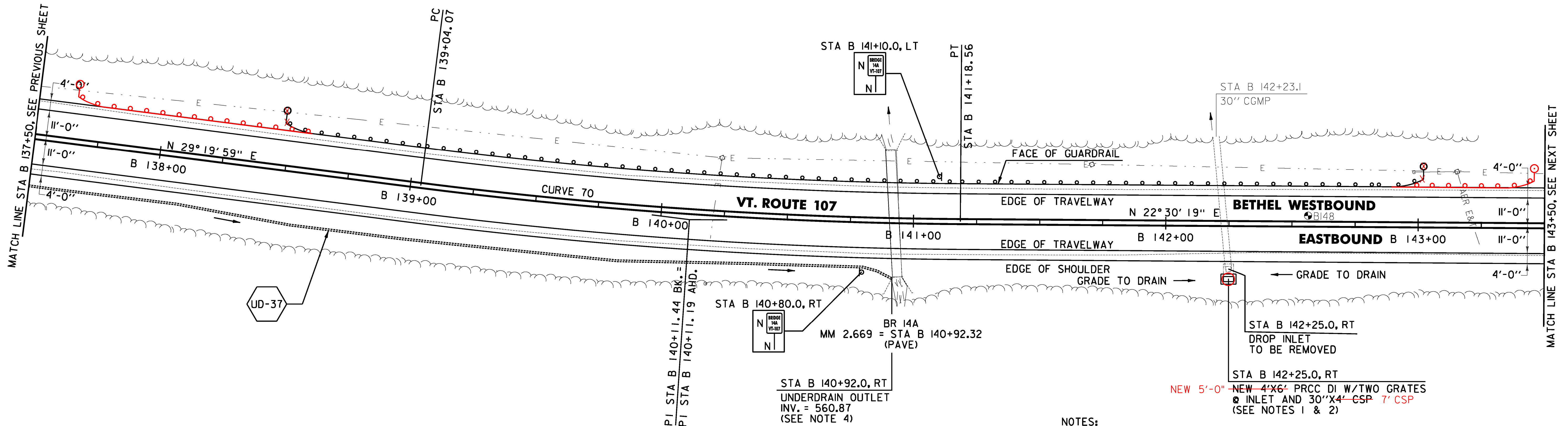
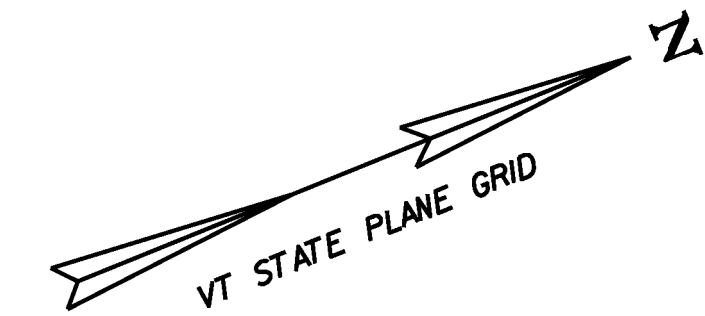
~~646.402 DURABLE 4 INCH WHITE LINE, THERMOPLASTIC OR~~
~~646.404 DURABLE 4 INCH WHITE LINE, POLYUREA~~
 (ALL LINES WILL INCLUDE EDGE LINE BREAKS AND RADIUS FOR TOWN HIGHWAYS)
 BETHEL:
 STA B 137+50.00 - STA B 143+50.00 LT & RT

646.602 TEMPORARY 4 INCH WHITE LINE, PAINT
 (ALL LINES WILL INCLUDE EDGE LINE BREAKS AND RADIUS FOR TOWN HIGHWAYS)
 BETHEL:
 STA B 137+50.00 - STA B 143+50.00 LT & RT

213.10 MILLED RUMBLE STRIPS
 (ALL CLRS WILL INCLUDE C/L BREAKS FOR TOWN HIGHWAYS)
 BETHEL:
 STA B 137+50.0 - STA B 143+50.0 C/L (600.0 LF)

646.414 DURABLE 4 INCH YELLOW LINE, POLYUREA
 (ALL LINES WILL INCLUDE C/L BREAKS FOR TOWN HIGHWAYS) S=SOLID, D=DASHED
 BETHEL:
 STA B 137+50.00 - STA B 143+50.00 LT C RT
 S - S

646.612 TEMPORARY 4 INCH YELLOW LINE, PAINT
 (ALL LINES WILL INCLUDE C/L BREAKS FOR TOWN HIGHWAYS) S=SOLID, D=DASHED
 BETHEL:
 STA B 137+50.00 - STA B 143+50.00 LT C RT
 S - S



NOTES:

1. THE CONTRACTOR SHALL ADJUST THE PROPOSED SIDE SLOPE IN ORDER TO PLACE DROP INLET IN PROPOSED LOCATION AS DIRECTED BY THE ENGINEER.
2. THE CONTRACTOR SHALL FIELD VERIFY THE INVERT OF EXISTING PIPE PRIOR TO ORDERING PROPOSED DRAINAGE STRUCTURE.
3. THE CONTRACTOR SHALL BE AWARE THAT AN UNDERGROUND FIBER OPTIC FACILITY EXISTS ALONG VT 107. THE LOCATION SHOWN ON THE PLANS IS APPROXIMATE, AND THE POTENTIAL EXISTS FOR CONFLICTS WITH THE FIBER OPTIC AND THE PROPOSED UNDERDRAIN AT VARIOUS LOCATIONS THROUGHOUT THE PROJECT. THE CONTRACTOR IS ADVISED THAT, PRIOR TO CONSTRUCTION, ALL PROPOSED UNDERDRAIN LOCATIONS SHALL BE FIELD VERIFIED WITH THE ENGINEER AND RELOCATED AS NECESSARY TO ELIMINATE ANY CONFLICTS WITH THE FIBER OPTIC FACILITY.
4. SEE SHEET 28 FOR UNDERDRAIN DETAILS.

SOIL BORING DATA			
BORING #	DEPTH (FT.)	PCC	COMMENTS
BI48	5.0	NO	

CURVE 70
 $\Delta = 6^{\circ} 49' 39''$
 $D = 3^{\circ} 10' 59''$
 $R = 1800.00'$
 $T = 107.37'$
 $L = 214.49'$
 $E = 3.20'$
 $e = 0.056 \text{ FT/FT}$

SIGN LEGEND
 R = REMOVE
 S = SALVAGE
 N = NEW
 RET = RETAIN
 B-B = BACK TO BACK
 EXISTING = -----
 NEW = _____



613.10 STONE FILL, TYPE I
 STA 138+27.0 - STA 140+87.0 RT

621.205 STEEL BEAM GUARDRAIL, GALVANIZED W/8 FEET POSTS
 BETHEL:
 STA B 138+48.0 - STA B 143+02.0 LT (454.0 LF)
 STA B 137+90.0 - STA B 143+42.0 LT (554.0 LF)

621.60 ANCHOR FOR STEEL BEAM RAIL
 BETHEL:
 STA B 138+54.5 LT
 STA B 142+95.5 LT
 STA B 137+95.0 LT
 STA B 143+38.0 LT

~~653.20 TEMPORARY EROSION MATTING~~
~~BETHEL:~~
~~STA B 137+50.0 - STA B 141+00.0 RT (85.6 SY)~~
~~STA B 138+50.0 - STA B 140+00.0 LT (63.9 SY)~~
~~STA B 142+00.0 - STA B 143+50.0 LT (68.0 SY)~~
 676.10 DELINEATOR WITH STEEL POST
 BETHEL:
 STA B 138+48.0 LT
 STA B 143+02.0 LT

FILE NAME = V:\1720\sta\10b214\22426\CADD\10b214_bdr_nul.83.dgn
 DATE = 3/17/2014
 USER = J.P.S.

PROJECT LAYOUT SHEET #83

PROJECT NAME: STOCKBRIDGE-BETHEL
 PROJECT NUMBER: STP 2910(1)
 FILE NAME: z10b214_bdr_nul.83.dgn
 PROJECT LEADER: D.E.G.
 DESIGNED BY: L.M.B.
 IPARM FILE: z10b214183.1

PLOT DATE: 3/17/2014
 DRAWN BY: W.G.P.
 CHECKED BY: J.P.S.
 SHEET 116 OF 397