

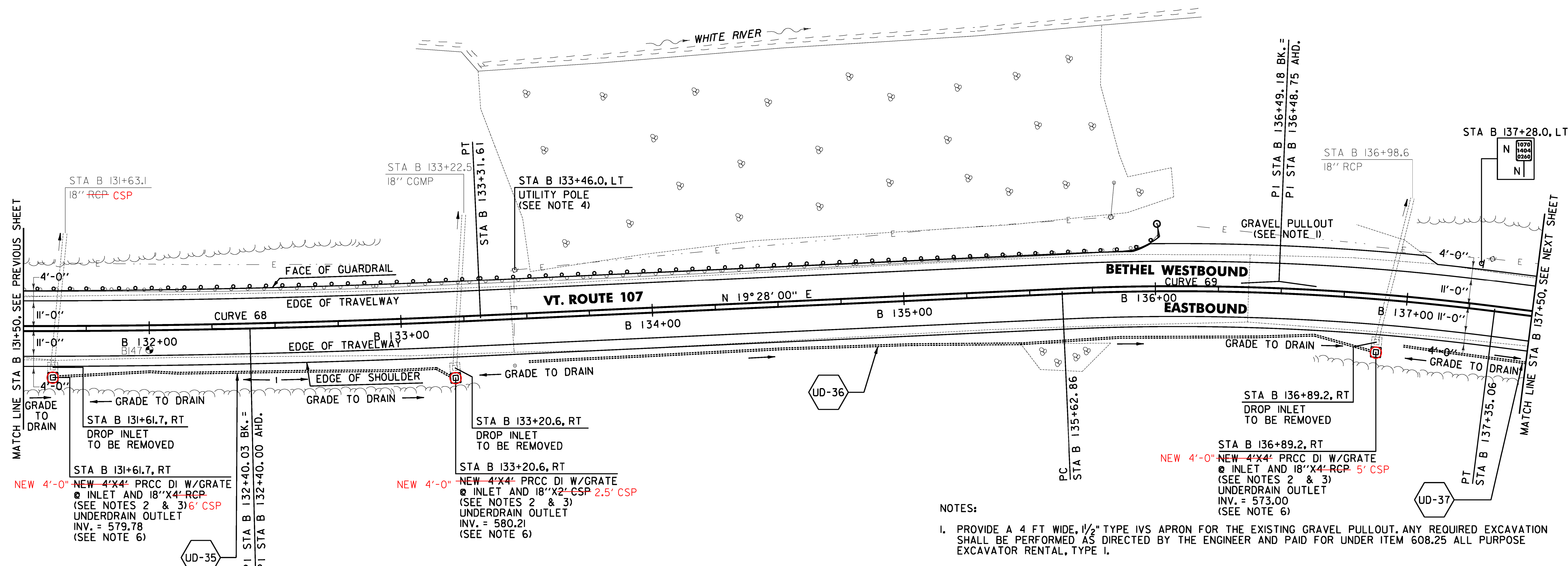
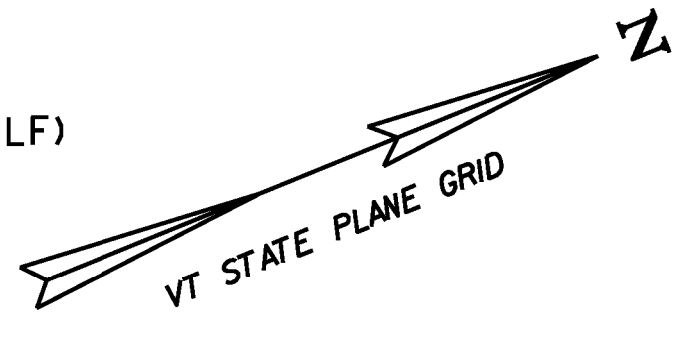
~~646.402 DURABLE 4 INCH WHITE LINE, THERMOPLASTIC OR~~
~~646.404 DURABLE 4 INCH WHITE LINE, POLYUREA~~
 (ALL LINES WILL INCLUDE EDGE LINE BREAKS AND RADIUS FOR TOWN HIGHWAYS)
 BETHEL:
 STA B 131+50.00 - STA B 137+50.00 LT & RT

646.602 TEMPORARY 4 INCH WHITE LINE, PAINT
 (ALL LINES WILL INCLUDE EDGE LINE BREAKS AND RADIUS FOR TOWN HIGHWAYS)
 BETHEL:
 STA B 131+50.00 - STA B 137+50.00 LT & RT

213.10 MILLED RUMBLE STRIPS
 (ALL CLRS WILL INCLUDE C/L BREAKS FOR TOWN HIGHWAYS)
 BETHEL:
 STA B 131+50.0 - STA B 137+50.0 C/L (600.0 LF)

646.414 DURABLE 4 INCH YELLOW LINE, POLYUREA
 (ALL LINES WILL INCLUDE C/L BREAKS FOR TOWN HIGHWAYS) S=SOLID, D=DASHED
 BETHEL:
 STA B 131+50.00 - STA B 137+50.00 LT C RT
 S - S

646.612 TEMPORARY 4 INCH YELLOW LINE, PAINT
 (ALL LINES WILL INCLUDE C/L BREAKS FOR TOWN HIGHWAYS) S=SOLID, D=DASHED
 BETHEL:
 STA B 131+50.00 - STA B 137+50.00 LT C RT
 S - S



- NOTES:
1. PROVIDE A 4 FT WIDE, 1/2" TYPE IVS APRON FOR THE EXISTING GRAVEL PULLOUT. ANY REQUIRED EXCAVATION SHALL BE PERFORMED AS DIRECTED BY THE ENGINEER AND PAID FOR UNDER ITEM 608.25 ALL PURPOSE EXCAVATOR RENTAL, TYPE I.
 2. THE CONTRACTOR SHALL ADJUST THE PROPOSED SIDE SLOPE IN ORDER TO PLACE DROP INLET IN PROPOSED LOCATION AS DIRECTED BY THE ENGINEER.
 3. THE CONTRACTOR SHALL FIELD VERIFY THE INVERT OF EXISTING PIPE PRIOR TO ORDERING PROPOSED DRAINAGE STRUCTURE.
 4. SEE SHEET 25 FOR REDUCED STEEL BEAM GUARDRAIL POST SPACING FOR UTILITY POLE DETAIL.
 5. THE CONTRACTOR SHALL BE AWARE THAT AN UNDERGROUND FIBER OPTIC FACILITY EXISTS ALONG VT 107. THE LOCATION SHOWN ON THE PLANS IS APPROXIMATE, AND THE POTENTIAL EXISTS FOR CONFLICTS WITH THE FIBER OPTIC AND THE PROPOSED UNDERDRAIN AT VARIOUS LOCATIONS THROUGHOUT THE PROJECT. THE CONTRACTOR IS ADVISED THAT, PRIOR TO CONSTRUCTION, ALL PROPOSED UNDERDRAIN LOCATIONS SHALL BE FIELD VERIFIED WITH THE ENGINEER AND RELOCATED AS NECESSARY TO ELIMINATE ANY CONFLICTS WITH THE FIBER OPTIC FACILITY.
 6. SEE SHEET 28 FOR UNDERDRAIN DETAILS.

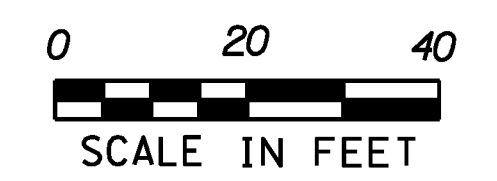
SOIL BORING DATA			
BORING #	DEPTH (FT.)	PCC	COMMENTS
BI47	1.25	NO	REFUSAL AT 1.25'

- 604.40 CHANGE ELEVATION OF DI
 STA 131+61.7 RT
 STA 133+20.6 RT
- 613.10 STONE FILL, TYPE I
 STA 133+12.0 - STA 133+61.0 LT
 STA 133+95.0 - STA 136+87.0 RT
- 613.11 STONE FILL, TYPE II
 STA 133+20.0 - STA 133+40.0 RT (PIPE INLET)
 STA 136+89.0 - STA 137+14.0 RT (PIPE INLET)
- 621.205 STEEL BEAM GUARDRAIL, GALVANIZED W/8 FEET POSTS
 BETHEL:
 STA B 131+50.0 - STA B 132+96.0 LT (146.0 LF)
- 621.75 REMOVE AND RESET GUARDRAIL
 BETHEL:
 STA B 132+96.0 - STA B 136+01.0 LT (305.0 LF)
- 621.80 REMOVAL AND DISPOSAL OF GUARDRAIL
 BETHEL:
 STA B 131+50.0 - STA B 132+96.0 LT (146.0 LF)

- 621.20 STEEL BEAM GUARDRAIL
 STA B 135+87.0 - STA B 136+01.0 LT (14.5 LF)
- 621.60 ANCHOR FOR STEEL BEAM GUARDRAIL
 STA B 135+96.0 LT
- 653.20 TEMPORARY EROSION MATTING
 BETHEL:
~~STA B 131+50.0 - STA B 137+50.0 RT (131.9 SY)~~
~~STA B 131+50.0 - STA B 132+00.0 LT (12.5 SY)~~
~~STA B 133+00.0 - STA B 133+50.0 LT (31.7 SY)~~
- 676.10 DELINEATOR WITH STEEL POST
 BETHEL:
 STA B 136+01.0 LT

CURVE 68		CURVE 69	
Δ = 2°37'27"	D = 1°25'57"	Δ = 9°51'59"	D = 5°43'46"
R = 4000.00'	T = 91.61'	R = 1000.00'	T = 86.31'
L = 183.20'	E = 1.05'	L = 172.20'	E = 3.72'
e = 0.030 FT/FT		e = 0.076 FT/FT	

SIGN LEGEND
 R = REMOVE
 S = SALVAGE
 N = NEW
 RET = RETAIN
 B-B = BACK TO BACK
 EXISTING = -----
 NEW = _____



PROJECT LAYOUT SHEET #82	PROJECT NAME: STOCKBRIDGE-BETHEL	PLOT DATE: 3/17/2014
	PROJECT NUMBER: STP 2910(1)	DRAWN BY: W.G.P.
	FILE NAME: z10b214_bdr_nul_82.dgn PROJECT LEADER: D.E.G. DESIGNED BY: L.M.B. IPARM FILE: z10b214182.1	CHECKED BY: J.P.S. SHEET 115 OF 397

FILE NAME: V:\Projects\2014\10\22\2426\CADD\1\STP2910\z10b214_bdr_nul_82.dgn
DATE: 3/17/2014
USER: J.4916