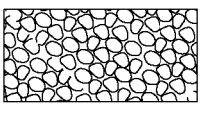


LEGEND
 ITEM 613.10 STONE FILL, TYPE I

~~646.402 DURABLE 4 INCH WHITE LINE, THERMOPLASTIC OR~~
~~646.404 DURABLE 4 INCH WHITE LINE, POLYUREA~~
 (ALL LINES WILL INCLUDE EDGE LINE BREAKS AND RADIUS FOR TOWN HIGHWAYS)
 BETHEL:
 STA B 41+50.00 - STA B 47+50.00 LT & RT

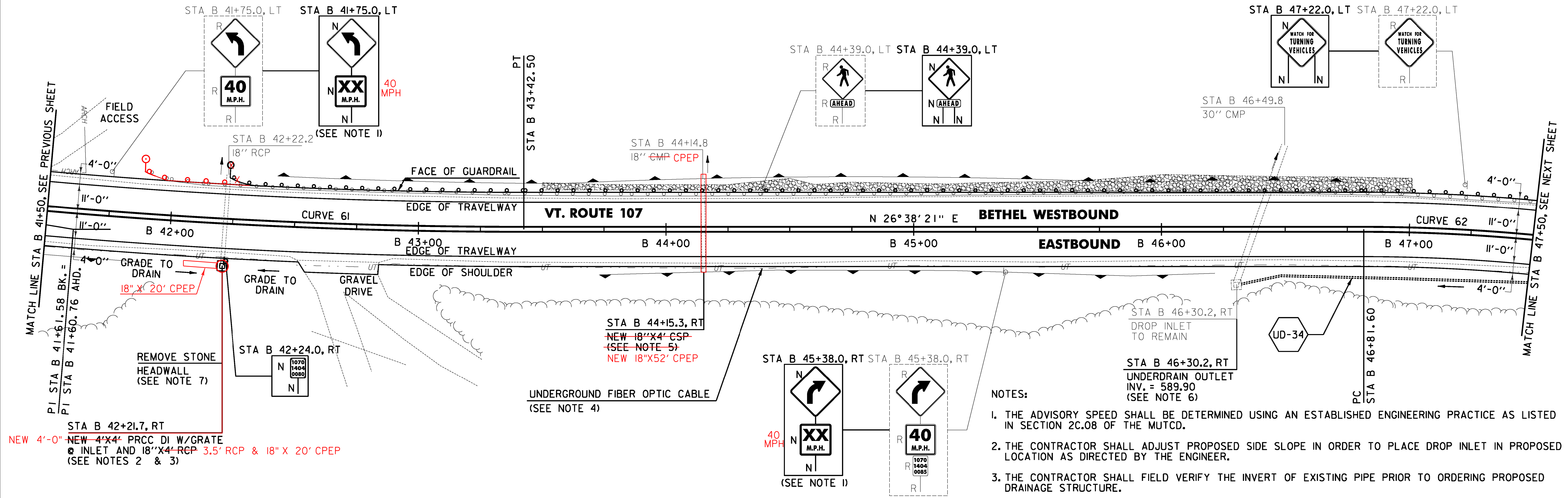
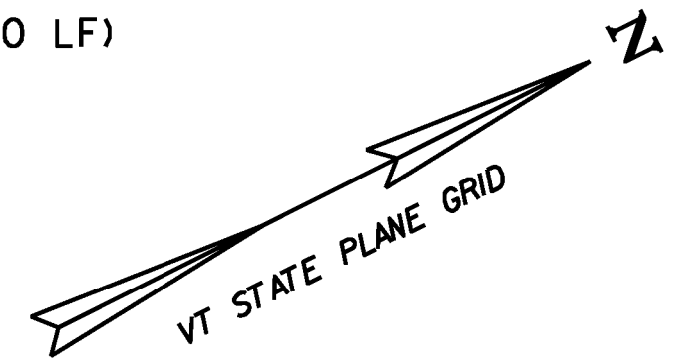
646.602 TEMPORARY 4 INCH WHITE LINE, PAINT
 (ALL LINES WILL INCLUDE EDGE LINE BREAKS AND RADIUS FOR TOWN HIGHWAYS)
 BETHEL:
 STA B 41+50.00 - STA B 47+50.00 LT & RT

213.10 MILLED RUMBLE STRIPS
 (ALL CLRS WILL INCLUDE C/L BREAKS FOR TOWN HIGHWAYS)
 BETHEL: 41+57.0
 STA B 41+50.0 - STA B 47+50.0 C/L (600.0 LF)

675.50 REMOVING SIGNS
 AS SHOWN - 8

646.414 DURABLE 4 INCH YELLOW LINE, POLYUREA
 (ALL LINES WILL INCLUDE C/L BREAKS FOR TOWN HIGHWAYS) S=SOLID, D=DASHED
 BETHEL: LT C RT
 S - S

646.612 TEMPORARY 4 INCH YELLOW LINE, PAINT
 (ALL LINES WILL INCLUDE C/L BREAKS FOR TOWN HIGHWAYS) S=SOLID, D=DASHED
 BETHEL: LT C RT
 S - S



NOTES:

1. THE ADVISORY SPEED SHALL BE DETERMINED USING AN ESTABLISHED ENGINEERING PRACTICE AS LISTED IN SECTION 2C.08 OF THE MUTCD.
2. THE CONTRACTOR SHALL ADJUST PROPOSED SIDE SLOPE IN ORDER TO PLACE DROP INLET IN PROPOSED LOCATION AS DIRECTED BY THE ENGINEER.
3. THE CONTRACTOR SHALL FIELD VERIFY THE INVERT OF EXISTING PIPE PRIOR TO ORDERING PROPOSED DRAINAGE STRUCTURE.
4. THE CONTRACTOR SHALL BE AWARE THAT AN UNDERGROUND FIBER OPTIC FACILITY EXISTS ALONG VT 107. THE LOCATION SHOWN ON THE PLANS IS APPROXIMATE, AND THE POTENTIAL EXISTS FOR CONFLICTS WITH THE FIBER OPTIC AND THE PROPOSED UNDERDRAIN AT VARIOUS LOCATIONS THROUGHOUT THE PROJECT. THE CONTRACTOR IS ADVISED THAT, PRIOR TO CONSTRUCTION, ALL PROPOSED UNDERDRAIN LOCATIONS SHALL BE FIELD VERIFIED WITH THE ENGINEER AND RELOCATED AS NECESSARY TO ELIMINATE ANY CONFLICTS WITH THE FIBER OPTIC FACILITY.
5. SEE SHEET 25 FOR PIPE EXTENSION DETAIL FOR METAL PIPES.
6. SEE SHEET 28 FOR UNDERDRAIN DETAILS.
7. THE CONTRACTOR SHALL REMOVE THE EXISTING STONE HEADWALL UNDER ITEM 204.21 TRENCH EXCAVATION OF ROCK PRIOR TO THE INSTALLATION OF THE PROPOSED DRAINAGE STRUCTURE AS DIRECTED BY THE ENGINEER.



613.10 STONE FILL, TYPE I
 BETHEL: 42+81.0
 STA B 43+50.0 - STA B 47+00.0 LT (74.1CY)

621.205 STEEL BEAM GUARDRAIL, GALVANIZED W/8 FEET POSTS
 BETHEL: 41+89.0
 STA B 42+23.0 - STA B 47+50.0 LT (527.0 LF)

621.80 REMOVAL AND DISPOSAL OF GUARDRAIL
 BETHEL:
 STA B 41+89.0 - STA B 47+50.0 LT (561.0 LF)

621.60 ANCHOR FOR STEEL BEAM RAIL
 BETHEL: 41+97.0
 STA B 42+29.5 LT

676.10 DELINEATOR WITH STEEL POST
 BETHEL:
 STA B 42+23.0 LT

STA 41+60.0 - STA 42+03.0 RT
 STA 41+75.0 - STA 42+48.0 LT
 STA 44+00.0 - STA 44+35.0 RT
 STA 46+28.0 - STA 46+59.0 RT

651.40 GRUBBING MATERIAL (6")
 BETHEL: 42+81.0
 STA B 43+50.0 - STA B 47+00.0 LT (181.7 SY)

~~653.20 TEMPORARY EROSION MATTING~~
 BETHEL:
 STA B 43+00.0 - STA B 47+50.0 LT (230.3 SY)
 STA B 46+00.0 - STA B 46+50.0 RT (25.6 SY)

	CURVE 61	CURVE 62
Δ	= 9° 26' 42"	= 34° 55' 25"
D	= 2° 36' 16"	= 7° 54' 10"
R	= 2200.00'	= 725.00'
T	= 181.74'	= 228.06'
L	= 362.67'	= 441.91'
E	= 7.49'	= 35.02'
e	= 0.048 FT/FT	= 0.080 FT/FT

SIGN LEGEND
 R = REMOVE
 S = SALVAGE
 N = NEW
 RET = RETAIN
 B-B = BACK TO BACK
 EXISTING = -----
 NEW = _____

PROJECT LAYOUT SHEET #67	PROJECT NAME: STOCKBRIDGE-BETHEL	PLOT DATE: 3/17/2014
	PROJECT NUMBER: STP 2910(1)	DRAWN BY: W.G.P.
	FILE NAME: z10b214_bdr_nul.67.dgn	CHECKED BY: J.P.S.
	PROJECT LEADER: D.E.G. DESIGNED BY: L.M.B. IPARM FILE: z10b214167.1	SHEET 100 OF 397

FILE NAME = V:\Projects\2014\22426\CAD\1\STP\214_bdr_nul.67.dgn
 DATE = 3/17/2014
 USER = J.P.S.