

**LEGEND**

 ITEM 613.10 STONE FILL, TYPE I

~~646.402 DURABLE 4 INCH WHITE LINE, THERMOPLASTIC OR~~  
~~646.404 DURABLE 4 INCH WHITE LINE, POLYUREA~~  
 (ALL LINES WILL INCLUDE EDGE LINE BREAKS AND RADIUS FOR TOWN HIGHWAYS)  
 BETHEL:  
 STA B 23+50.00 - STA B 29+50.00 LT & RT

646.602 TEMPORARY 4 INCH WHITE LINE, PAINT  
 (ALL LINES WILL INCLUDE EDGE LINE BREAKS AND RADIUS FOR TOWN HIGHWAYS)  
 BETHEL:  
 STA B 23+50.00 - STA B 29+50.00 LT & RT

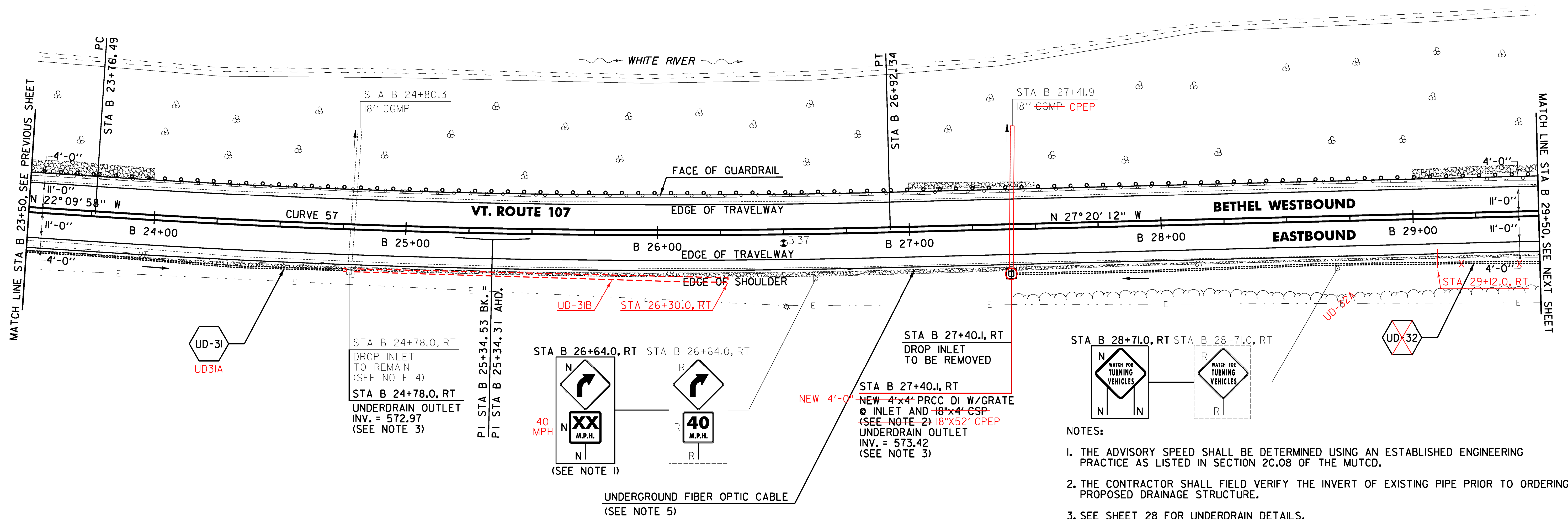
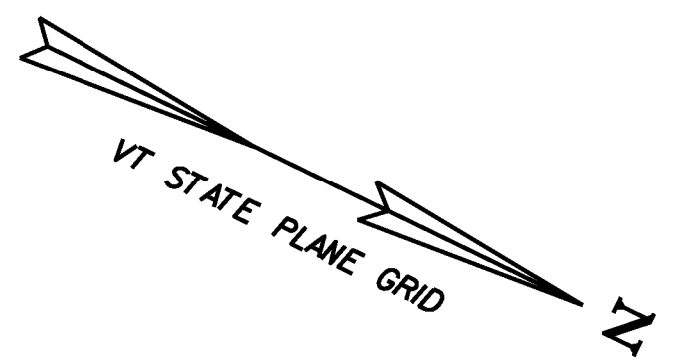
213.10 MILLED RUMBLE STRIPS  
 (ALL CLRS WILL INCLUDE C/L BREAKS FOR TOWN HIGHWAYS)  
 BETHEL:  
 STA B 23+50.0 - STA B 29+50.0 C/L (600.0 LF)

675.50 REMOVING SIGNS  
 AS SHOWN - 3

646.414 DURABLE 4 INCH YELLOW LINE, POLYUREA  
 (ALL LINES WILL INCLUDE C/L BREAKS FOR TOWN HIGHWAYS) S=SOLID, D=DASHED  
 BETHEL:  
 STA B 23+50.00 - STA B 29+50.00 LT C RT  
 S - S

646.612 TEMPORARY 4 INCH YELLOW LINE, PAINT  
 (ALL LINES WILL INCLUDE C/L BREAKS FOR TOWN HIGHWAYS) S=SOLID, D=DASHED  
 BETHEL:  
 STA B 23+50.00 - STA B 29+50.00 LT C RT  
 S - S

604.40 CHANGE ELEVATION OF DI  
 STA 24+78.0 RT  
 STA 27+40.0 RT



FILE NAME = V:\172\msta\1722426\CADD\172\17214\_bdr\_nul\_64.dgn  
 DATE = 3/17/2014  
 USER = J4916

613.10 STONE FILL, TYPE I  
 BETHEL: STA 29+00.0 - STA 29+50.0 RT  
~~STA B 23+50.0 - STA B 24+00.0 LT (10.7 CY)~~  
~~STA B 23+50.0 - STA B 29+50.0 RT (42.4 CY)~~  
~~STA B 27+00.0 - STA B 27+50.0 LT (13.1 SY)~~  
~~STA B 29+00.0 - STA B 29+50.0 LT (20.8 SY)~~  
 27+31.0  
 621.75 REMOVE AND RESET GUARDRAIL  
 BETHEL:  
 STA B 23+50.0 - STA B 29+50.0 LT (600.0 LF)

651.40 GRUBBING MATERIAL (6")  
 BETHEL:  
~~STA B 23+50.0 - STA B 24+00.0 LT (25.8 SY)~~  
~~STA B 23+50.0 - STA B 29+50.0 RT (110.3 SY)~~  
~~STA B 27+00.0 - STA B 27+50.0 LT (13.1 SY)~~  
 STA B 29+00.0 - STA B 29+50.0 LT (20.8 SY)  
 27+31.0  
 653.20 TEMPORARY EROSION MATTING  
 BETHEL:  
~~STA B 23+50.0 - STA B 25+00.0 LT (89.2 SY)~~  
~~STA B 23+50.0 - STA B 29+50.0 RT (110.3 SY)~~  
~~STA B 26+50.0 - STA B 27+50.0 LT (26.4 SY)~~  
~~STA B 28+50.0 - STA B 29+50.0 LT (39.4 SY)~~

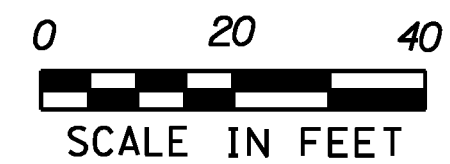
SOIL BORING DATA			
BORING #	DEPTH (FT.)	PCC	COMMENTS
BI37	5.0	NO	

CURVE 57  
 $\Delta = 5^\circ 10' 14''$   
 $D = 1^\circ 38' 13''$   
 $R = 3500.00'$   
 $T = 158.03'$   
 $L = 315.85'$   
 $E = 3.57'$   
 $e = 0.034 \text{ FT/FT}$

**SIGN LEGEND**  
 R = REMOVE  
 S = SALVAGE  
 N = NEW  
 RET = RETAIN  
 B-B = BACK TO BACK  
 EXISTING = -----  
 NEW = \_\_\_\_\_

**NOTES:**

1. THE ADVISORY SPEED SHALL BE DETERMINED USING AN ESTABLISHED ENGINEERING PRACTICE AS LISTED IN SECTION 2C.08 OF THE MUTCD.
2. THE CONTRACTOR SHALL FIELD VERIFY THE INVERT OF EXISTING PIPE PRIOR TO ORDERING PROPOSED DRAINAGE STRUCTURE.
3. SEE SHEET 28 FOR UNDERDRAIN DETAILS.
4. THE CONTRACTOR SHALL ADJUST THE PROPOSED SIDE SLOPE TO AVOID FILLING IN THE EXISTING DROP INLET AS DIRECTED BY THE ENGINEER.
5. THE CONTRACTOR SHALL BE AWARE THAT AN UNDERGROUND FIBER OPTIC FACILITY EXISTS ALONG VT 107. THE LOCATION SHOWN ON THE PLANS IS APPROXIMATE, AND THE POTENTIAL EXISTS FOR CONFLICTS WITH THE FIBER OPTIC AND THE PROPOSED UNDERDRAIN AT VARIOUS LOCATIONS THROUGHOUT THE PROJECT. THE CONTRACTOR IS ADVISED THAT, PRIOR TO CONSTRUCTION, ALL PROPOSED UNDERDRAIN LOCATIONS SHALL BE FIELD VERIFIED WITH THE ENGINEER AND RELOCATED AS NECESSARY TO ELIMINATE ANY CONFLICTS WITH THE FIBER OPTIC FACILITY.



<b>PROJECT LAYOUT SHEET #64</b>	PROJECT NAME: STOCKBRIDGE-BETHEL	PLOT DATE: 3/17/2014
	PROJECT NUMBER: STP 2910(1)	DRAWN BY: W.G.P.
	FILE NAME: z10b214_bdr_nul_64.dgn	CHECKED BY: J.P.S.
	PROJECT LEADER: D.E.G.	SHEET 97 OF 397
	DESIGNED BY: L.M.B.	
	IPARM FILE: z10b214164.1	