

~~646.402 DURABLE 4 INCH WHITE LINE, THERMOPLASTIC OR~~
~~646.404 DURABLE 4 INCH WHITE LINE, POLYUREA~~
 (ALL LINES WILL INCLUDE EDGE LINE BREAKS AND
 RADIUS FOR TOWN HIGHWAYS)
 STOCKBRIDGE:
 STA 353+50.00 - STA 353+84.48 LT & RT
 BETHEL:
 STA B 0+00.00 - STA B 5+50.00 LT & RT

646.602 TEMPORARY 4 INCH WHITE LINE, PAINT
 (ALL LINES WILL INCLUDE EDGE LINE BREAKS AND
 RADIUS FOR TOWN HIGHWAYS)
 STOCKBRIDGE:
 STA 353+50.00 - STA 353+84.48 LT & RT
 BETHEL:
 STA B 0+00.00 - STA B 5+50.00 LT & RT

213.10 MILLED RUMBLE STRIPS
 (ALL CLRS WILL INCLUDE C/L
 BREAKS FOR TOWN HIGHWAYS)
 STOCKBRIDGE:
 STA 353+50.00 - STA 353+84.48 C/L (34.48 LF)
 BETHEL:
 STA B 0+00.00 - STA B 5+50.00 C/L (550.0 LF)

675.50 REMOVING SIGNS
 AS SHOWN - 3

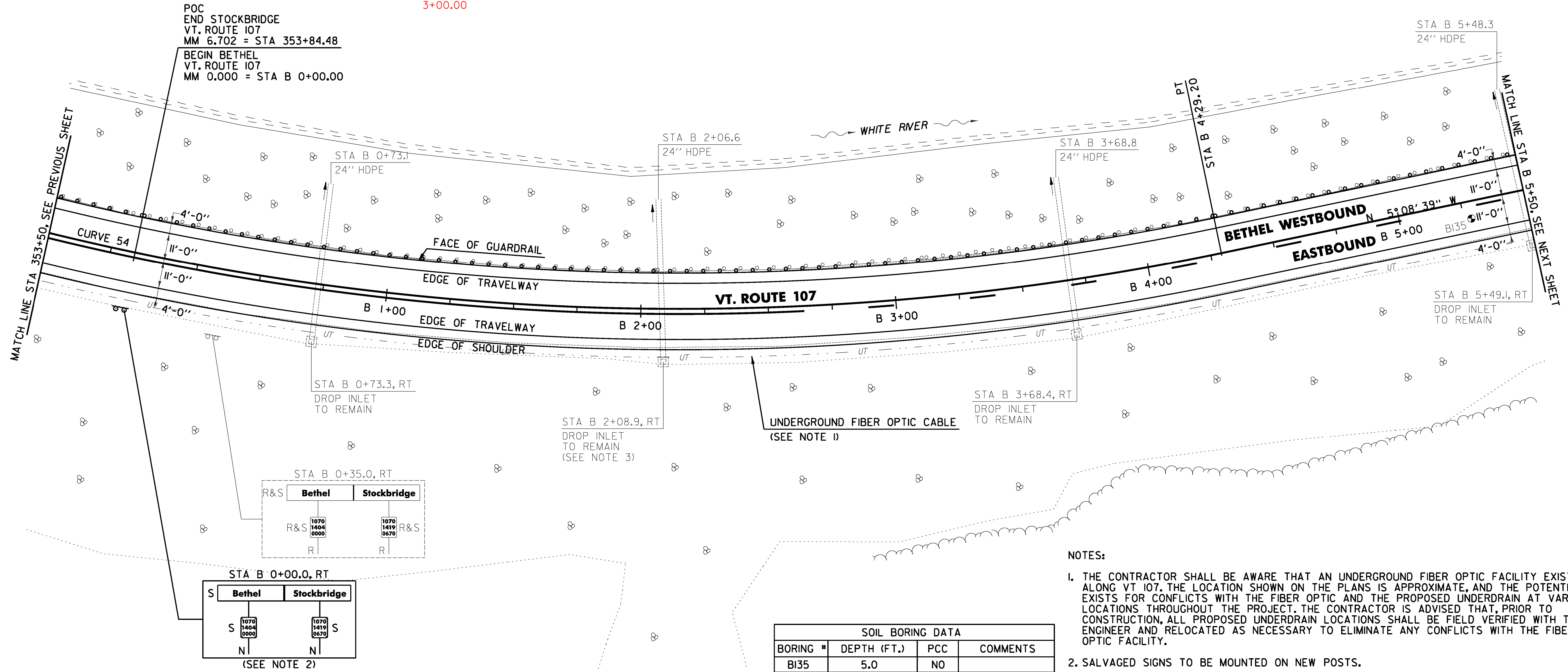
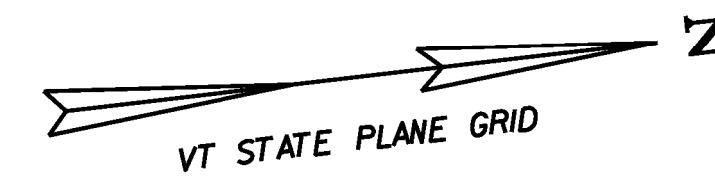
675.60 ERECTING SALVAGED SIGNS
 AS SHOWN - 3

646.414 DURABLE 4 INCH YELLOW LINE, POLYUREA
 (ALL LINES WILL INCLUDE C/L BREAKS FOR
 TOWN HIGHWAYS) S=SOLID, D=DASHED
 STOCKBRIDGE:
 STA 353+50.00 - STA 353+84.48
 BETHEL:
 STA B 0+00.00 - STA B 2+64.00
 STA B 2+64.00 - STA B 5+50.00
 3+00.00

LT C RT
 S - S
 S - S
 S - D

646.612 TEMPORARY 4 INCH YELLOW LINE, PAINT
 (ALL LINES WILL INCLUDE C/L BREAKS FOR
 TOWN HIGHWAYS) S=SOLID, D=DASHED
 STOCKBRIDGE:
 STA 353+50.00 - STA 353+84.48
 BETHEL:
 STA B 0+00.00 - STA B 2+64.00
 STA B 2+64.00 - STA B 5+50.00

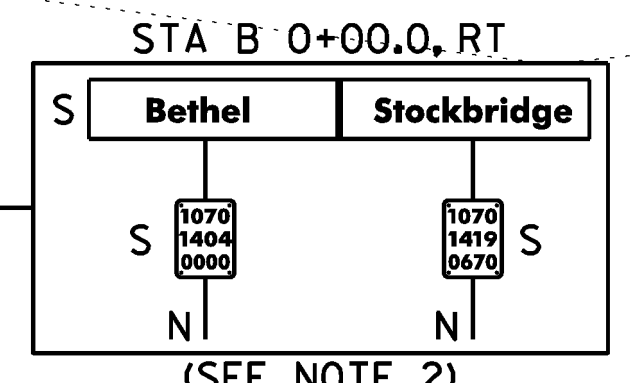
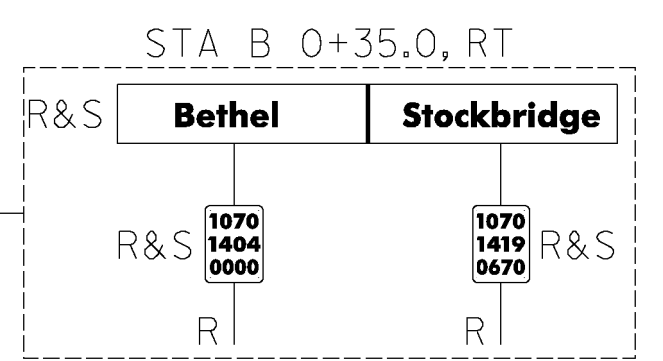
LT C RT
 S - S
 S - S
 S - D



POC
 END STOCKBRIDGE
 VT. ROUTE 107
 MM 6.702 = STA 353+84.48
 BEGIN BETHEL
 VT. ROUTE 107
 MM 0.000 = STA B 0+00.00

MATCH LINE STA 353+50. SEE PREVIOUS SHEET

MATCH LINE STA B 5+50. SEE NEXT SHEET



SOIL BORING DATA			
BORING #	DEPTH (FT.)	PCC	COMMENTS
BI35	5.0	NO	

NOTES:

1. THE CONTRACTOR SHALL BE AWARE THAT AN UNDERGROUND FIBER OPTIC FACILITY EXISTS ALONG VT 107. THE LOCATION SHOWN ON THE PLANS IS APPROXIMATE, AND THE POTENTIAL EXISTS FOR CONFLICTS WITH THE FIBER OPTIC AND THE PROPOSED UNDERDRAIN AT VARIOUS LOCATIONS THROUGHOUT THE PROJECT. THE CONTRACTOR IS ADVISED THAT, PRIOR TO CONSTRUCTION, ALL PROPOSED UNDERDRAIN LOCATIONS SHALL BE FIELD VERIFIED WITH THE ENGINEER AND RELOCATED AS NECESSARY TO ELIMINATE ANY CONFLICTS WITH THE FIBER OPTIC FACILITY.
2. SALVAGED SIGNS TO BE MOUNTED ON NEW POSTS.
3. THE CONTRACTOR SHALL ADJUST THE PROPOSED SIDE SLOPE TO AVOID FILLING IN THE EXISTING DROP INLET AS DIRECTED BY THE ENGINEER.



CURVE 54
 Δ = 57°04'54"
 D = 5°30'33"
 R = 1040.00'
 T = 565.63'
 L = 1036.12'
 E = 143.87'
 e = 0.076 FT/FT

621.75 REMOVE AND RESET GUARDRAIL
 STOCKBRIDGE:
 STA 353+50.0 - STA 353+84.48 LT (34.48 LF)
 BETHEL:
 STA B 0+00.0 - STA B 5+50.0 LT (550.0 LF)

SIGN LEGEND
 R = REMOVE
 S = SALVAGE
 N = NEW
 RET = RETAIN
 B-B = BACK TO BACK
 EXISTING = -----
 NEW = _____

PROJECT LAYOUT SHEET #60	
PROJECT NAME: STOCKBRIDGE-BETHEL	PROJECT NUMBER: STP 2910(1)
FILE NAME: z10b214_bdr_nul.60.dgn	PLOT DATE: 3/17/2014
PROJECT LEADER: D.E.G.	DRAWN BY: W.G.P.
DESIGNED BY: L.M.B.	CHECKED BY: J.P.S.
IPARM FILE: z10b214160.1	SHEET 93 OF 397

FILE NAME = V:\Projects\10b214\10b214_bdr_nul.60.dgn
 DATE = 3/17/2014
 USER = J.P.S.