


LEGEND
 EXISTING PAVEMENT TO BE REMOVED (SEE NOTE 1)

~~646.402 DURABLE 4 INCH WHITE LINE, THERMOPLASTIC OR~~
 646.404 DURABLE 4 INCH WHITE LINE, POLYUREA
 (ALL LINES WILL INCLUDE EDGE LINE BREAKS AND RADIUS FOR TOWN HIGHWAYS)
 STOCKBRIDGE:
 STA 269+50.00 - STA 275+50.00 LT & RT

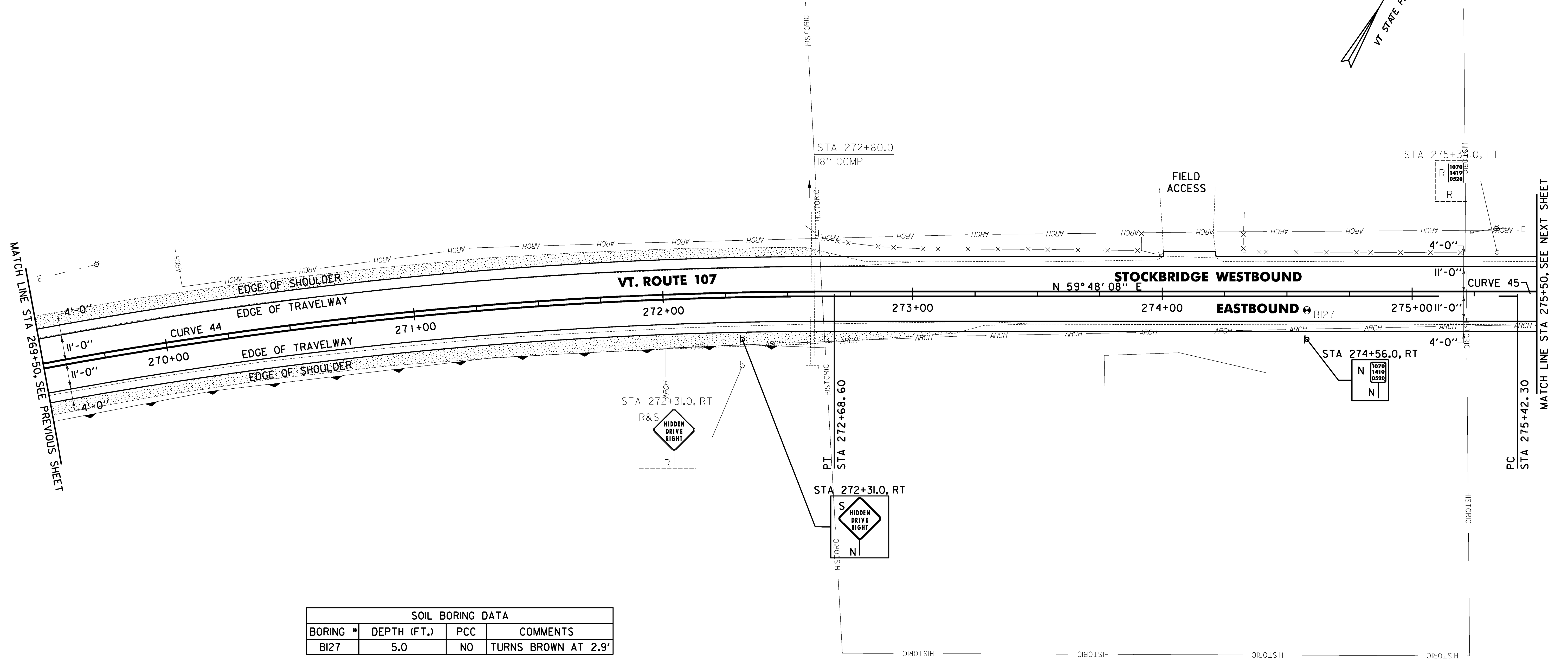
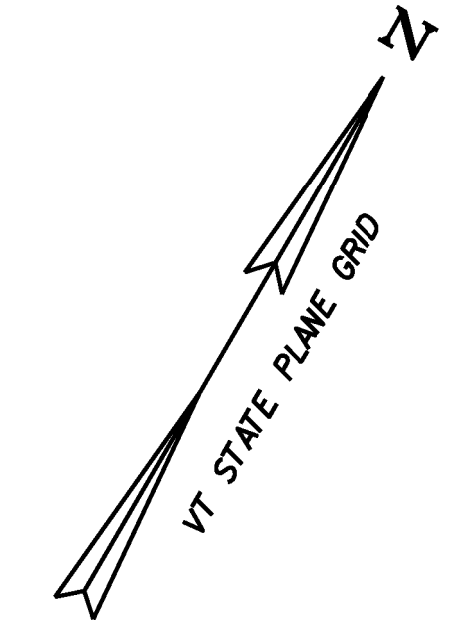
646.602 TEMPORARY 4 INCH WHITE LINE, PAINT
 (ALL LINES WILL INCLUDE EDGE LINE BREAKS AND RADIUS FOR TOWN HIGHWAYS)
 STOCKBRIDGE:
 STA 269+50.00 - STA 275+50.00 LT & RT

213.10 MILLED RUMBLE STRIPS
 (ALL CLRS WILL INCLUDE C/L BREAKS FOR TOWN HIGHWAYS)
 STOCKBRIDGE:
 STA 269+50.0 - STA 275+50.0 C/L (600.0 LF)
 272+10.0

675.50 REMOVING SIGNS AS SHOWN - 2
 675.60 ERECTING SALVAGED SIGNS AS SHOWN - 1

646.414 DURABLE 4 INCH YELLOW LINE, POLYUREA
 (ALL LINES WILL INCLUDE C/L BREAKS FOR TOWN HIGHWAYS) S=SOLID, D=DASHED
 STOCKBRIDGE:
 STA 269+50.00 - STA 275+08.80 S - S
 STA 275+08.80 - STA 275+50.00 S - D

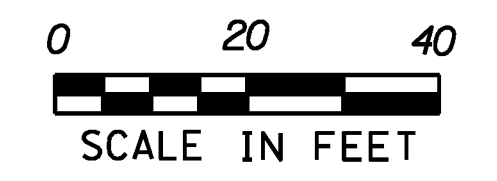
646.612 TEMPORARY 4 INCH YELLOW LINE, PAINT
 (ALL LINES WILL INCLUDE C/L BREAKS FOR TOWN HIGHWAYS) S=SOLID, D=DASHED
 STOCKBRIDGE:
 STA 269+50.00 - STA 275+08.80 S - S
 STA 275+08.80 - STA 275+50.00 S - D



SOIL BORING DATA			
BORING #	DEPTH (FT.)	PCC	COMMENTS
BI27	5.0	NO	URNS BROWN AT 2.9'

NOTES:

- THE CONTRACTOR SHALL COLD PLANE THE TOP 4" OF EXISTING ROAD SURFACE, AND RECLAIM THE NEXT 8" OF THE EXISTING ROAD SURFACE AT FULL WIDTH. THE CONTRACTOR SHALL THEN PLACE 2" OF ITEM 651.35 TOPSOIL AND ITEM 651.5 SEED AS DIRECTED BY THE ENGINEER.
- THE CONTRACTOR SHALL BE AWARE THAT AN UNDERGROUND FIBER OPTIC FACILITY EXISTS ALONG VT 107. THE LOCATION SHOWN ON THE PLANS IS APPROXIMATE, AND THE POTENTIAL EXISTS FOR CONFLICTS WITH THE FIBER OPTIC AND THE PROPOSED UNDERDRAIN AT VARIOUS LOCATIONS THROUGHOUT THE PROJECT. THE CONTRACTOR IS ADVISED THAT, PRIOR TO CONSTRUCTION, ALL PROPOSED UNDERDRAIN LOCATIONS SHALL BE FIELD VERIFIED WITH THE ENGINEER AND RELOCATED AS NECESSARY TO ELIMINATE ANY CONFLICTS WITH THE FIBER OPTIC FACILITY.



CURVE 44		CURVE 45	
Δ = 21° 47' 04"		Δ = 2° 02' 09"	
D = 3° 16' 27"		D = 0° 26' 27"	
R = 1750.00'		R = 13000.00'	
T = 336.75'		T = 230.97'	
L = 665.37'		L = 461.89'	
E = 32.11'		E = 2.05'	
e = 0.056 FT/FT		e = 0.020 FT/FT	

SIGN LEGEND
 R = REMOVE
 S = SALVAGE
 N = NEW
 RET = RETAIN
 B-B = BACK TO BACK
 EXISTING = -----
 NEW = _____

PROJECT LAYOUT SHEET #46	PROJECT NAME: STOCKBRIDGE-BETHEL
	PROJECT NUMBER: STP 2910(1)
	FILE NAME: z10b214_bdr_nul_46.dgn
	IPARM FILE: z10b214146.i
	PLOT DATE: 3/17/2014
	DRAWN BY: W.G.P.
	CHECKED BY: J.P.S.
	SHEET 79 OF 397

FILE NAME: V:\Projects\10b214\10b214.dgn
 DATE: 3/17/2014
 USER: J.P.S.