

LEGEND
 EXISTING PAVEMENT TO BE REMOVED (SEE NOTE 1)

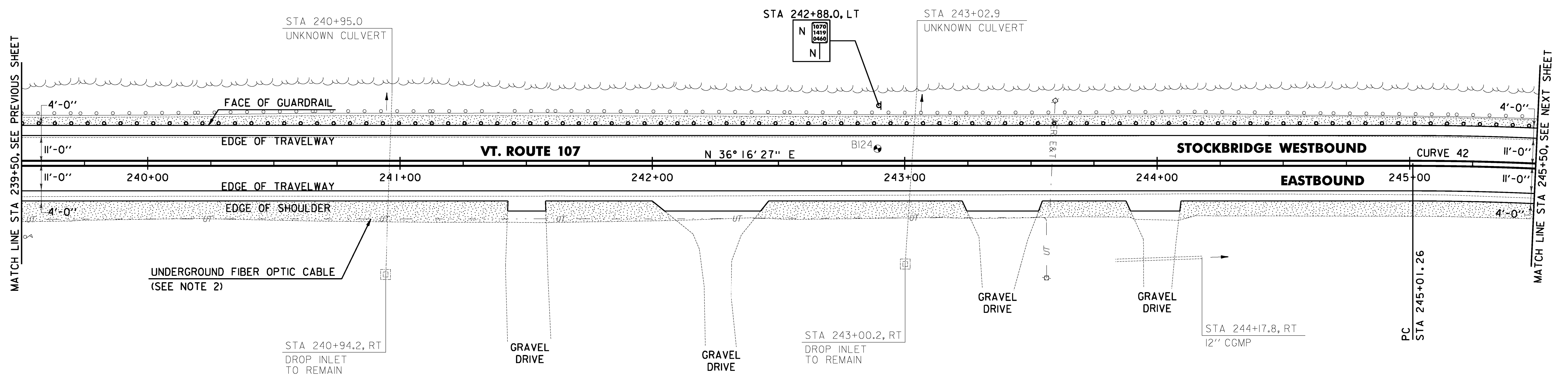
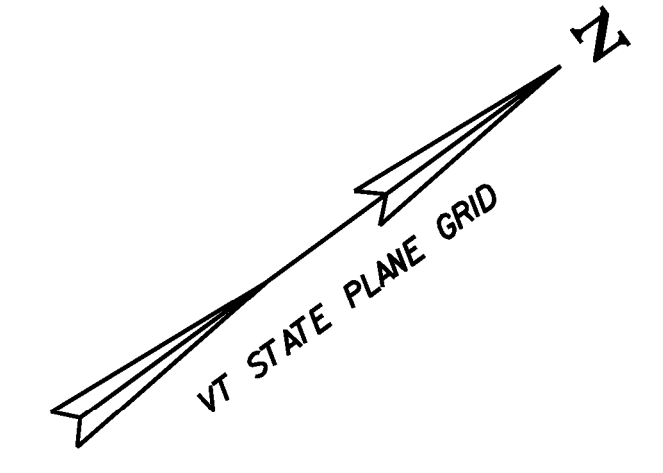
~~646.402 DURABLE 4 INCH WHITE LINE, THERMOPLASTIC OR~~
~~646.404 DURABLE 4 INCH WHITE LINE, POLYUREA~~
 (ALL LINES WILL INCLUDE EDGE LINE BREAKS AND RADIUS FOR TOWN HIGHWAYS)
 STOCKBRIDGE:
 STA 239+50.00 - STA 245+50.00 LT & RT

646.602 TEMPORARY 4 INCH WHITE LINE, PAINT
 (ALL LINES WILL INCLUDE EDGE LINE BREAKS AND RADIUS FOR TOWN HIGHWAYS)
 STOCKBRIDGE:
 STA 239+50.00 - STA 245+50.00 LT & RT

~~213.10 MILLED RUMBLE STRIPS~~
 (ALL CLRS WILL INCLUDE C/L BREAKS FOR TOWN HIGHWAYS)
~~STOCKBRIDGE:~~
~~STA 239+50.0 - STA 245+50.0 C/L (600.0 LF)~~

646.414 DURABLE 4 INCH YELLOW LINE, POLYUREA
 (ALL LINES WILL INCLUDE C/L BREAKS FOR TOWN HIGHWAYS) S=SOLID, D=DASHED
 STOCKBRIDGE:
 STA 239+50.00 - STA 245+50.00 LT C RT S - S

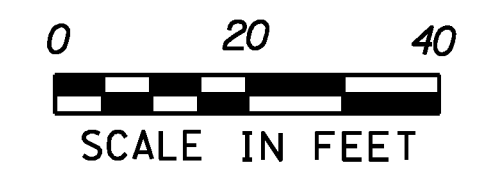
646.612 TEMPORARY 4 INCH YELLOW LINE, PAINT
 (ALL LINES WILL INCLUDE C/L BREAKS FOR TOWN HIGHWAYS) S=SOLID, D=DASHED
 STOCKBRIDGE:
 STA 239+50.00 - STA 245+50.00 LT C RT S - S



NOTES:

1. THE CONTRACTOR SHALL COLD PLANE THE TOP 4" OF EXISTING ROAD SURFACE, AND RECLAIM THE NEXT 8" OF THE EXISTING ROAD SURFACE AT FULL WIDTH. THE CONTRACTOR SHALL THEN PLACE 2" OF ITEM 651.35 TOPSOIL AND ITEM 651.15 SEED AS DIRECTED BY THE ENGINEER.
2. THE CONTRACTOR SHALL BE AWARE THAT AN UNDERGROUND FIBER OPTIC FACILITY EXISTS ALONG VT 107. THE LOCATION SHOWN ON THE PLANS IS APPROXIMATE, AND THE POTENTIAL EXISTS FOR CONFLICTS WITH THE FIBER OPTIC AND THE PROPOSED UNDERDRAIN AT VARIOUS LOCATIONS THROUGHOUT THE PROJECT. THE CONTRACTOR IS ADVISED THAT, PRIOR TO CONSTRUCTION, ALL PROPOSED UNDERDRAIN LOCATIONS SHALL BE FIELD VERIFIED WITH THE ENGINEER AND RELOCATED AS NECESSARY TO ELIMINATE ANY CONFLICTS WITH THE FIBER OPTIC FACILITY.

SOIL BORING DATA			
BORING #	DEPTH (FT.)	PCC	COMMENTS
BI24	5.0	NO	DIFFICULT DRILLING



- 617.10 RELOCATE MAILBOX, SINGLE SUPPORT
 STOCKBRIDGE:
 STA 239+55.0 RT
- 621.20 STEEL BEAM GUARDRAIL, GALVANIZED
 STOCKBRIDGE:
 STA 239+64.0 - STA 245+50.0 LT (586.0 LF)
 239+50.0 (600.0 LF)
- 621.75 REMOVE AND RESET GUARDRAIL
 STOCKBRIDGE:
 STA 239+50.0 - STA 239+64.0 LT (14.0 LF)
- 621.80 REMOVAL AND DISPOSAL OF GUARDRAIL
 STOCKBRIDGE:
 STA 239+64.0 - STA 245+50.0 LT (586.0 LF)
 239+50.0 (600.0 LF)
- 653.20 TEMPORARY EROSION MATTING
 STOCKBRIDGE:
 STA 242+50.0 - STA 243+00.0 LT (12.8 SY)

CURVE 42
 $\Delta = 31^\circ 37' 58''$
 $D = 5^\circ 12' 31''$
 $R = 1100.00'$
 $T = 311.61'$
 $L = 607.31'$
 $E = 43.28'$
 $e = 0.074 \text{ FT/FT}$

SIGN LEGEND
 R = REMOVE
 S = SALVAGE
 N = NEW
 RET = RETAIN
 B-B = BACK TO BACK
 EXISTING = -----
 NEW = _____

PROJECT LAYOUT SHEET #41	PROJECT NAME: STOCKBRIDGE-BETHEL	PLOT DATE: 3/17/2014
	PROJECT NUMBER: STP 2910(1)	DRAWN BY: W.G.P.
	FILE NAME: z10b214_bdr_nul.41.dgn	CHECKED BY: J.P.S.
	PROJECT LEADER: D.E.G. DESIGNED BY: L.M.B. IPARM FILE: z10b214i41.i	SHEET 74 OF 397

FILE NAME: V:\Projects\2014\22426\CAD\1\MS1\1\z10b214_bdr_nul.41.dgn
 DATE: 3/17/2014
 USER: J.P.S.