

**LEGEND**

	ITEM 613.10 STONE FILL, TYPE I
	ITEM 613.11 STONE FILL, TYPE II
	EXISTING PAVEMENT TO BE REMOVED (SEE NOTE 3)

~~646.402 DURABLE 4 INCH WHITE LINE, THERMOPLASTIC OR~~  
~~646.404 DURABLE 4 INCH WHITE LINE, POLYUREA~~  
 (ALL LINES WILL INCLUDE EDGE LINE BREAKS AND RADIUS FOR TOWN HIGHWAYS)  
 STOCKBRIDGE:  
 STA 215+50.00 - STA 221+50.00 LT & RT

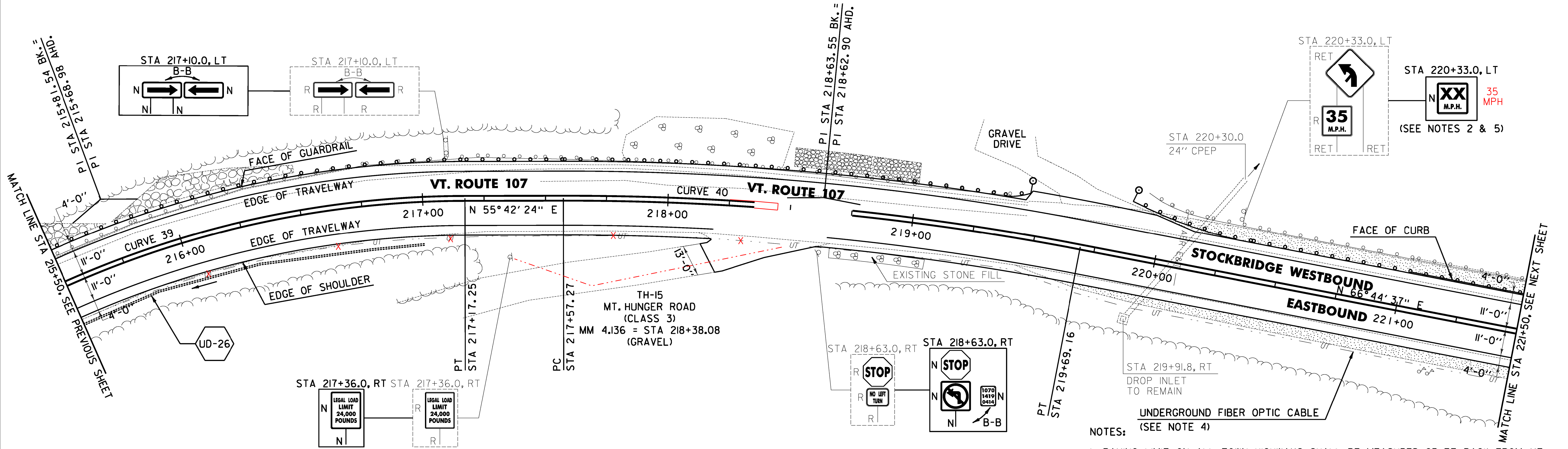
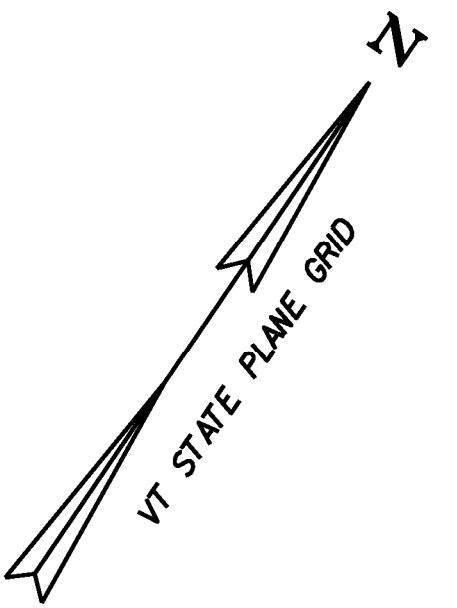
646.602 TEMPORARY 4 INCH WHITE LINE, PAINT  
 (ALL LINES WILL INCLUDE EDGE LINE BREAKS AND RADIUS FOR TOWN HIGHWAYS)  
 STOCKBRIDGE:  
 STA 215+50.00 - STA 221+50.00 LT & RT

213.10 MILLED RUMBLE STRIPS  
 (ALL CLRS WILL INCLUDE C/L BREAKS FOR TOWN HIGHWAYS)  
 STOCKBRIDGE:  
 STA 215+50.00 - STA 221+50.00 C/L (600.0 LF)

675.50 REMOVING SIGNS AS SHOWN - 6

646.414 DURABLE 4 INCH YELLOW LINE, POLYUREA  
 (ALL LINES WILL INCLUDE C/L BREAKS FOR TOWN HIGHWAYS) S=SOLID, D=DASHED  
 STOCKBRIDGE:  
 STA 215+50.00 - STA 221+50.00 LT S C RT S

646.612 TEMPORARY 4 INCH YELLOW LINE, PAINT  
 (ALL LINES WILL INCLUDE C/L BREAKS FOR TOWN HIGHWAYS) S=SOLID, D=DASHED  
 STOCKBRIDGE:  
 STA 215+50.00 - STA 221+50.00 LT S C RT S



**613.10 STONE FILL, TYPE I**  
 STOCKBRIDGE: STA 217+37.0 - STA 217+87.0 LT  
 STA 218+50.0 - STA 219+00.0 LT (19.7 CY)  
 STA 218+34.0 - STA 219+25.0 LT

**613.11 STONE FILL, TYPE II**  
 STOCKBRIDGE:  
 STA 215+50.0 - STA 216+50.0 LT (50.4 CY)  
 215+64.0 216+30.0

**616.305 BITUMINOUS CONCRETE CURB, TYPE A**  
 STOCKBRIDGE:  
 STA 221+03.0 - STA 221+50.0 LT (47.0 LF)  
 221+00.0 (50.0 LF)

**617.10 RELOCATE MAILBOX, SINGLE SUPPORT**  
 STOCKBRIDGE:  
 STA 221+15.0 RT  
 STA 221+20.0 RT

**621.20 STEEL BEAM GUARDRAIL, GALVANIZED**  
 STOCKBRIDGE:  
 STA 219+83.0 - STA 221+50.0 LT (167.0 LF)  
 STA 215+50.0 - STA 215+96.0 LT

**621.205 STEEL BEAM GUARDRAIL, GALVANIZED W/8 FEET POSTS**  
 STOCKBRIDGE:  
 STA 215+50.0 - STA 219+45.5 LT (395.5 LF)  
 215+96.0

**621.80 REMOVAL AND DISPOSAL OF GUARDRAIL**  
 STOCKBRIDGE:  
 STA 215+50.0 - STA 219+37.0 LT (387.0 LF)  
 STA 219+91.0 - STA 221+50.0 LT (159.0 LF)

**621.60 ANCHOR FOR STEEL BEAM RAIL**  
 STOCKBRIDGE:  
 STA 219+39.0 LT  
 STA 219+89.5 LT  
 219+88.0

**651.40 GRUBBING MATERIAL (6")**  
 STOCKBRIDGE: STA 217+37.0 - STA 217+87.0 LT  
 215+69.0 STA 215+50.0 - STA 216+50.0 LT (137.2 SY) 216+38.0  
 218+39.0 STA 218+50.0 - STA 219+00.0 LT (53.1 SY) 219+25.0

~~653.20 TEMPORARY EROSION MATTING~~  
 STOCKBRIDGE:  
 STA 215+50.0 - STA 216+50.0 LT (137.2 SY)  
 STA 217+50.0 - STA 219+00.0 LT (111.1 SY)

**676.10 DELINEATOR WITH STEEL POST**  
 STOCKBRIDGE:  
 STA 219+45.5 LT  
 STA 219+83.0 LT

**CURVE 39**  
 $\Delta = 40^\circ 40' 39''$   
 $D = 14^\circ 19' 26''$   
 $R = 400.00'$   
 $T = 148.27'$   
 $L = 283.98'$   
 $E = 26.60'$   
 $e = 0.080 \text{ FT/FT}$

**CURVE 40**  
 $\Delta = 11^\circ 02' 12''$   
 $D = 5^\circ 12' 31''$   
 $R = 1100.00'$   
 $T = 106.27'$   
 $L = 211.89'$   
 $E = 5.12'$   
 $e = 0.074 \text{ FT/FT}$

**SIGN LEGEND**  
 R = REMOVE  
 S = SALVAGE  
 N = NEW  
 RET = RETAIN  
 B-B = BACK TO BACK  
 EXISTING = -----  
 NEW = \_\_\_\_\_

- NOTES:
- PAVING LIMIT ON ALL TOWN HIGHWAYS SHALL BE MEASURED 25 FT BACK FROM VT. ROUTE 107 EDGE OF SHOULDER UNLESS DENOTED OTHERWISE ON THE PLANS OR AS DIRECTED BY THE ENGINEER.
  - THE ADVISORY SPEED SHALL BE DETERMINED USING AN ESTABLISHED ENGINEERING PRACTICE AS LISTED IN SECTION 2C.08 OF THE MUTCD.
  - THE CONTRACTOR SHALL COLD PLANE THE TOP 4" OF EXISTING ROAD SURFACE, AND RECLAIM THE NEXT 8" OF THE EXISTING ROAD SURFACE AT FULL WIDTH. THE CONTRACTOR SHALL THEN PLACE 2" OF ITEM 651.35 TOPSOIL AND ITEM 651.15 SEED AS DIRECTED BY THE ENGINEER.
  - THE CONTRACTOR SHALL BE AWARE THAT AN UNDERGROUND FIBER OPTIC FACILITY EXISTS ALONG VT 107. THE LOCATION SHOWN ON THE PLANS IS APPROXIMATE, AND THE POTENTIAL EXISTS FOR CONFLICTS WITH THE FIBER OPTIC AND THE PROPOSED UNDERDRAIN AT VARIOUS LOCATIONS THROUGHOUT THE PROJECT. THE CONTRACTOR IS ADVISED THAT, PRIOR TO CONSTRUCTION, ALL PROPOSED UNDERDRAIN LOCATIONS SHALL BE FIELD VERIFIED WITH THE ENGINEER AND RELOCATED AS NECESSARY TO ELIMINATE ANY CONFLICTS WITH THE FIBER OPTIC FACILITY.
  - PROPOSED SIGN TO BE MOUNTED ON EXISTING SIGN POST.



<b>PROJECT LAYOUT SHEET #37</b>	PROJECT NAME: STOCKBRIDGE-BETHEL	PLOT DATE: 3/17/2014
	PROJECT NUMBER: STP 2910(1)	DRAWN BY: W.G.P.
	FILE NAME: z10b214_bdr_nul.37.dgn	CHECKED BY: J.P.S.
	PROJECT LEADER: D.E.G. DESIGNED BY: L.M.B. IPARM FILE: z10b214137.1	SHEET 70 OF 397

FILE NAME: V:\1720\stps\10b214\222426\CADD\N\STP\z10b214\_bdr\_nul.37.dgn  
 DATE: 3/17/2014  
 USER: J.4916