

646.402 DURABLE 4 INCH WHITE LINE, THERMOPLASTIC OR
 646.404 DURABLE 4 INCH WHITE LINE, POLYUREA
 (ALL LINES WILL INCLUDE EDGE LINE BREAKS AND
 RADIUS FOR TOWN HIGHWAYS)
 STOCKBRIDGE:
 STA 149+75.00 - STA 156+00.00 LT & RT

646.414 DURABLE 4 INCH YELLOW LINE, POLYUREA
 (ALL LINES WILL INCLUDE C/L BREAKS FOR
 TOWN HIGHWAYS) S=SOLID, D=DASHED
 STOCKBRIDGE:
 STA 149+75.00 - STA 156+00.00 LT & RT
 STA 155+49.60 DOUBLE SOLID LT, TH-6I

646.482 DURABLE 24 INCH STOP BAR, THERMOPLASTIC OR
 646.484 DURABLE 24 INCH STOP BAR, POLYUREA
 STOCKBRIDGE:
 STA 155+49.60 LT, TH-6I

646.492 DURABLE LETTER OR SYMBOL, THERMOPLASTIC OR
 646.494 DURABLE LETTER OR SYMBOL, POLYUREA
 STOCKBRIDGE:
 STA 155+49.60 LT, TH-6I, "S,T,O,P" (4 EA)

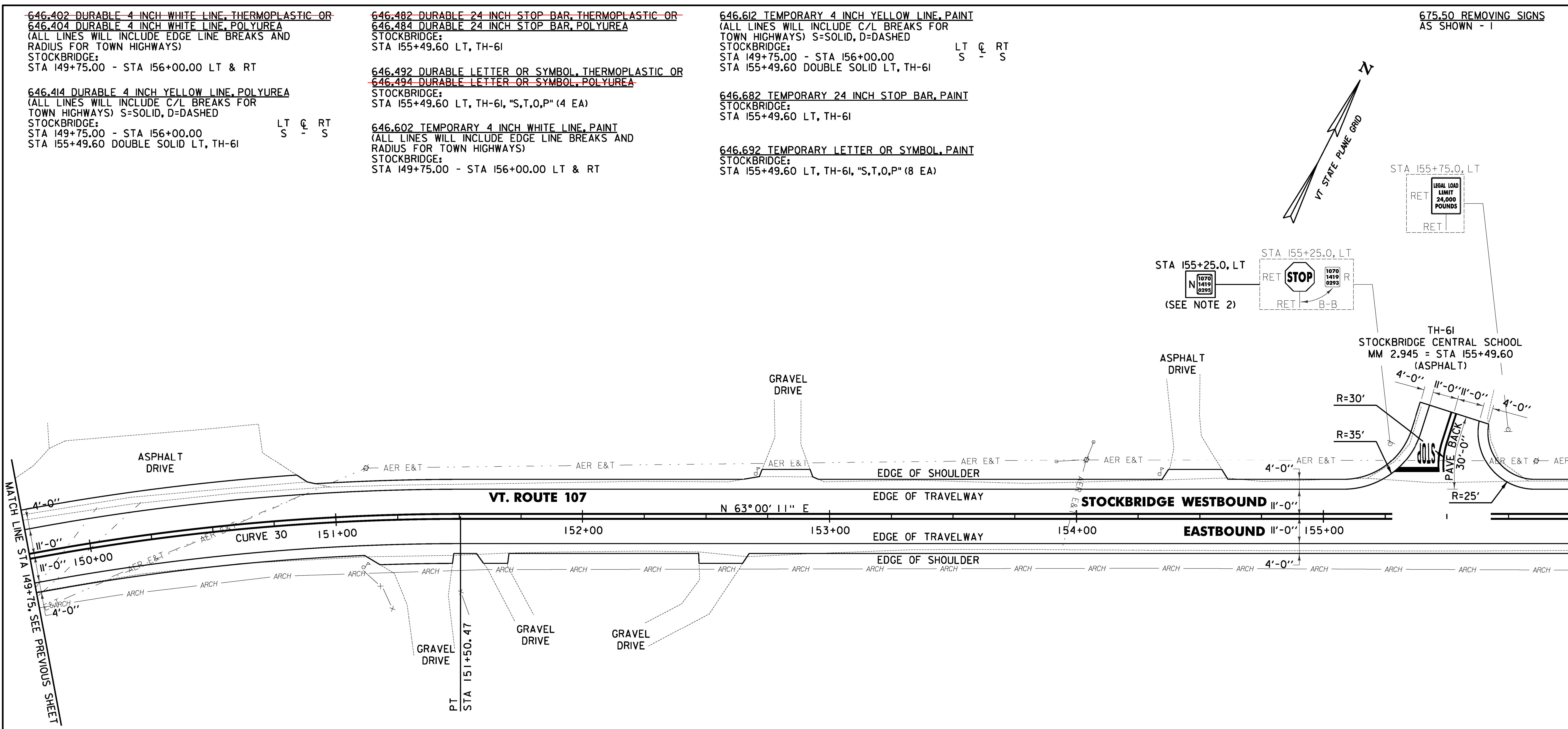
646.602 TEMPORARY 4 INCH WHITE LINE, PAINT
 (ALL LINES WILL INCLUDE EDGE LINE BREAKS AND
 RADIUS FOR TOWN HIGHWAYS)
 STOCKBRIDGE:
 STA 149+75.00 - STA 156+00.00 LT & RT

646.612 TEMPORARY 4 INCH YELLOW LINE, PAINT
 (ALL LINES WILL INCLUDE C/L BREAKS FOR
 TOWN HIGHWAYS) S=SOLID, D=DASHED
 STOCKBRIDGE:
 STA 149+75.00 - STA 156+00.00 LT & RT
 STA 155+49.60 DOUBLE SOLID LT, TH-6I

646.682 TEMPORARY 24 INCH STOP BAR, PAINT
 STOCKBRIDGE:
 STA 155+49.60 LT, TH-6I

646.692 TEMPORARY LETTER OR SYMBOL, PAINT
 STOCKBRIDGE:
 STA 155+49.60 LT, TH-6I, "S,T,O,P" (8 EA)

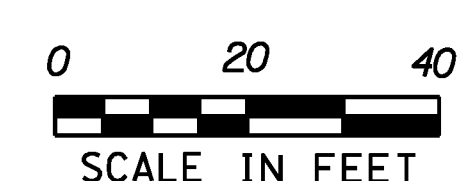
675.50 REMOVING SIGNS
 AS SHOWN - 1



MATCH LINE STA 149+75, SEE PREVIOUS SHEET

MATCH LINE STA 156+00, SEE NEXT SHEET

NOTES:
 1. THE CONTRACTOR SHALL BE AWARE THAT AN UNDERGROUND FIBER OPTIC FACILITY EXISTS ALONG VT 107. THE LOCATION SHOWN ON THE PLANS IS APPROXIMATE, AND THE POTENTIAL EXISTS FOR CONFLICTS WITH THE FIBER OPTIC AND THE PROPOSED UNDERDRAIN AT VARIOUS LOCATIONS THROUGHOUT THE PROJECT. THE CONTRACTOR IS ADVISED THAT, PRIOR TO CONSTRUCTION, ALL PROPOSED UNDERDRAIN LOCATIONS SHALL BE FIELD VERIFIED WITH THE ENGINEER AND RELOCATED AS NECESSARY TO ELIMINATE ANY CONFLICTS WITH THE FIBER OPTIC FACILITY.
 2. PROPOSED SIGN TO BE MOUNTED ON EXISTING SIGN POST.



PROJECT LAYOUT SHEET #26	PROJECT NAME: STOCKBRIDGE-BETHEL
	PROJECT NUMBER: STP 2910(1)
	FILE NAME: z10b214_bdr_nul_26.dgn
	IPARM FILE: z10b214i26.i
	PLOT DATE: 3/17/2014
	DRAWN BY: W.G.P.
	CHECKED BY: J.P.S.
	SHEET 59 OF 397

SIGN LEGEND
 R = REMOVE
 S = SALVAGE
 N = NEW
 RET = RETAIN
 B-B = BACK TO BACK
 --- = -----
 NEW = _____

CURVE 30
 $\Delta = 32^\circ 53' 37''$
 $D = 6^\circ 01' 52''$
 $R = 950.00'$
 $T = 280.44'$
 $L = 545.40'$
 $E = 40.53'$
 $e = 0.078 \text{ FT/FT}$

FILE NAME: V:\172\projects\10b214\10b214_bdr_nul_26.dgn
 DATE: 3/17/2014
 USER: J.P.S.