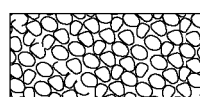
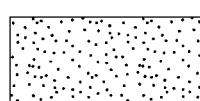


LEGEND

-  ITEM 613.10 STONE FILL, TYPE I
-  EXISTING PAVEMENT TO BE REMOVED (SEE NOTE 3)

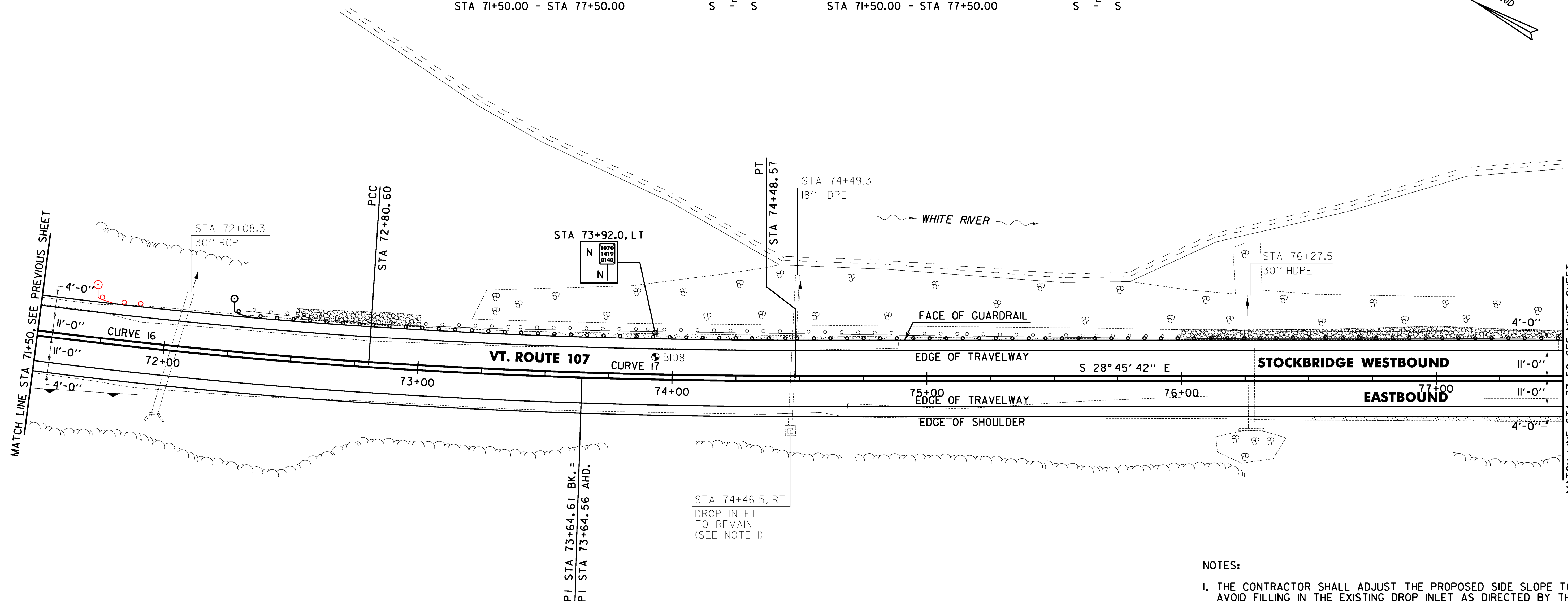
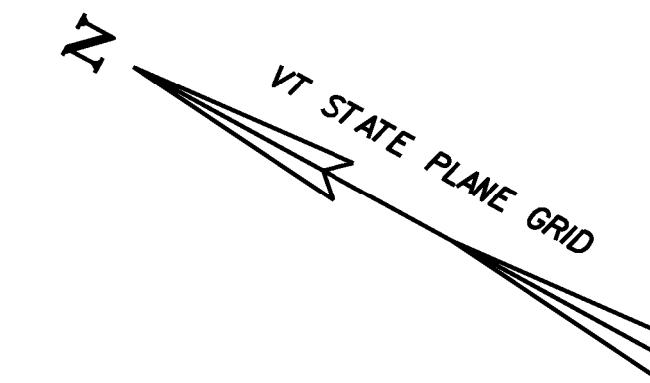
~~646.402 DURABLE 4 INCH WHITE LINE, THERMOPLASTIC OR~~
~~646.404 DURABLE 4 INCH WHITE LINE, POLYUREA~~
 (ALL LINES WILL INCLUDE EDGE LINE BREAKS AND RADIUS FOR TOWN HIGHWAYS)
 STOCKBRIDGE:
 STA 71+50.00 - STA 77+50.00 LT & RT

646.602 TEMPORARY 4 INCH WHITE LINE, PAINT
 (ALL LINES WILL INCLUDE EDGE LINE BREAKS AND RADIUS FOR TOWN HIGHWAYS)
 STOCKBRIDGE:
 STA 71+50.00 - STA 77+50.00 LT & RT

213.10 MILLED RUMBLE STRIPS
 (ALL CLRS WILL INCLUDE C/L BREAKS FOR TOWN HIGHWAYS)
 STOCKBRIDGE:
 STA 71+50.00 - STA 77+50.00 C/L (600.0 LF)

646.414 DURABLE 4 INCH YELLOW LINE, POLYUREA
 (ALL LINES WILL INCLUDE C/L BREAKS FOR TOWN HIGHWAYS) S=SOLID, D=DASHED
 STOCKBRIDGE:
 STA 71+50.00 - STA 77+50.00 LT S - S RT S - S

646.612 TEMPORARY 4 INCH YELLOW LINE, PAINT
 (ALL LINES WILL INCLUDE C/L BREAKS FOR TOWN HIGHWAYS) S=SOLID, D=DASHED
 STOCKBRIDGE:
 STA 71+50.00 - STA 77+50.00 LT S - S RT S - S



~~621.20 STEEL BEAM GUARDRAIL~~
~~STA 71+73.0 - 72+85.0 RT~~
~~621.60 ANCHOR FOR STEEL BEAM RAIL~~
~~STA 71+80.0 LT~~

~~621.75 REMOVE AND RESET GUARDRAIL~~
 STOCKBRIDGE:
~~STA 72+26.0 - STA 77+50.0 LT (524.0 LF)~~
~~72+85.0~~
~~613.10 STONE FILL, TYPE I~~
 STOCKBRIDGE:
~~STA 72+50.0 - STA 73+00.0 LT (6.6 CY)~~
~~STA 76+00.0 - STA 77+50.0 LT (10.6 CY)~~
~~651.40 GRUBBING MATERIAL (6")~~
 STOCKBRIDGE:
~~STA 72+50.0 - STA 73+00.0 LT (14.4 SY)~~
~~STA 76+00.0 - STA 77+50.0 LT (25.8 SY)~~

~~653.20 TEMPORARY EROSION MATTING~~
 STOCKBRIDGE:
~~STA 71+50.0 - STA 73+50.0 LT (51.4 SY)~~
~~STA 75+50.0 - STA 77+50.0 LT (32.8 SY)~~
 676.10 DELINEATOR WITH STEEL POST
 STOCKBRIDGE:
 STA 72+26.0 LT
 676.12 REMOVAL OF EXISTING DELINEATOR
 STOCKBRIDGE:
 STA 72+81.0 - STA 77+50.0 RT (2 EA)

CURVE 16
 $\Delta = 9^{\circ} 41' 22''$
 $D = 2^{\circ} 43' 42''$
 $R = 2100.00'$
 $T = 177.99'$
 $L = 355.13'$
 $E = 7.53'$
 $e = 0.050 \text{ FT/FT}$

CURVE 17
 $\Delta = 3^{\circ} 42' 05''$
 $D = 2^{\circ} 12' 13''$
 $R = 2600.00'$
 $T = 84.01'$
 $L = 167.97'$
 $E = 1.36'$
 $e = 0.042 \text{ FT/FT}$

SOIL BORING DATA			
BORING #	DEPTH (FT.)	PCC	COMMENTS
BIO8	5.0	NO	

SIGN LEGEND
 R = REMOVE
 S = SALVAGE
 N = NEW
 RET = RETAIN
 B-B = BACK TO BACK
 EXISTING = -----
 NEW = _____

- NOTES:**
1. THE CONTRACTOR SHALL ADJUST THE PROPOSED SIDE SLOPE TO AVOID FILLING IN THE EXISTING DROP INLET AS DIRECTED BY THE ENGINEER.
 2. THE CONTRACTOR SHALL BE AWARE THAT AN UNDERGROUND FIBER OPTIC FACILITY EXISTS ALONG VT 107. THE LOCATION SHOWN ON THE PLANS IS APPROXIMATE, AND THE POTENTIAL EXISTS FOR CONFLICTS WITH THE FIBER OPTIC AND THE PROPOSED UNDERDRAIN AT VARIOUS LOCATIONS THROUGHOUT THE PROJECT. THE CONTRACTOR IS ADVISED THAT, PRIOR TO CONSTRUCTION, ALL PROPOSED UNDERDRAIN LOCATIONS SHALL BE FIELD VERIFIED WITH THE ENGINEER AND RELOCATED AS NECESSARY TO ELIMINATE ANY CONFLICTS WITH THE FIBER OPTIC FACILITY.
 3. THE CONTRACTOR SHALL COLD PLANE THE TOP 4" OF EXISTING ROAD SURFACE, AND RECLAIM THE NEXT 8" OF THE EXISTING ROAD SURFACE AT FULL WIDTH. THE CONTRACTOR SHALL THEN PLACE 2" OF ITEM 651.35 TOPSOIL AND ITEM 651.5 SEED AS DIRECTED BY THE ENGINEER.



PROJECT LAYOUT SHEET #13	PROJECT NAME: STOCKBRIDGE-BETHEL	PLOT DATE: 3/17/2014
	PROJECT NUMBER: STP 2910(1)	DRAWN BY: W.G.P.
	FILE NAME: z10b214_bdr_nul.13.dgn	CHECKED BY: J.P.S.
	DESIGNED BY: L.M.B.	SHEET 46 OF 397
	IPARM FILE: z10b214i13.i	

FILE NAME: V:\172\17202\17202.dwg
 DATE: 3/17/2014
 USER: J.P.S.