

LEGEND
 EXISTING PAVEMENT TO BE REMOVED (SEE NOTE 2)

~~646.402 DURABLE 4 INCH WHITE LINE, THERMOPLASTIC OR~~
~~646.404 DURABLE 4 INCH WHITE LINE, POLYUREA~~
 (ALL LINES WILL INCLUDE EDGE LINE BREAKS AND RADIUS FOR TOWN HIGHWAYS)
 STOCKBRIDGE:
 STA 17+50.00 - STA 23+50.00 LT & RT

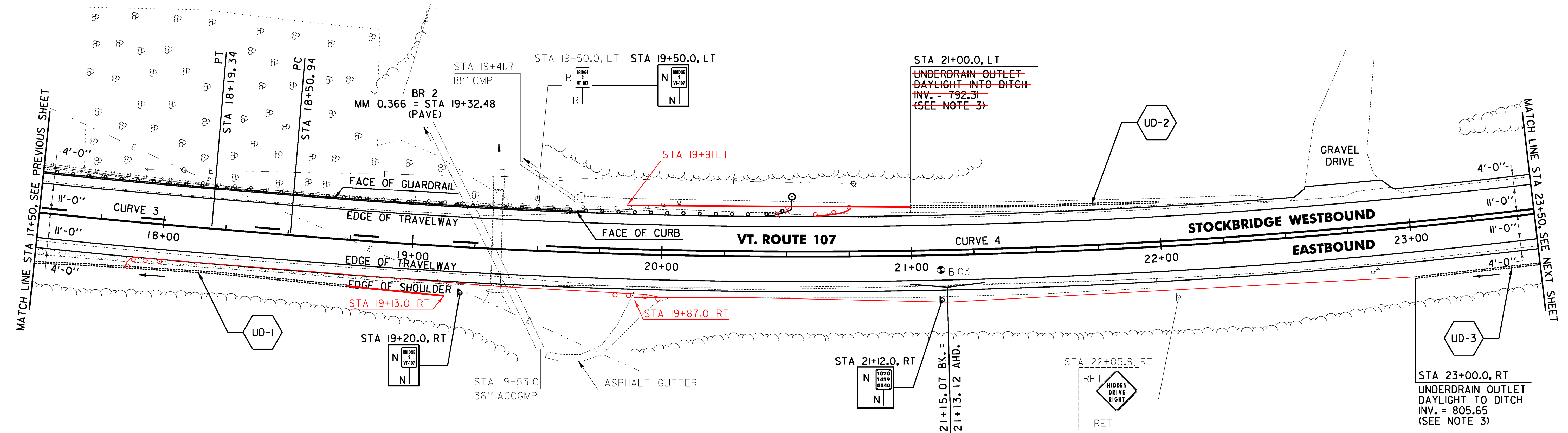
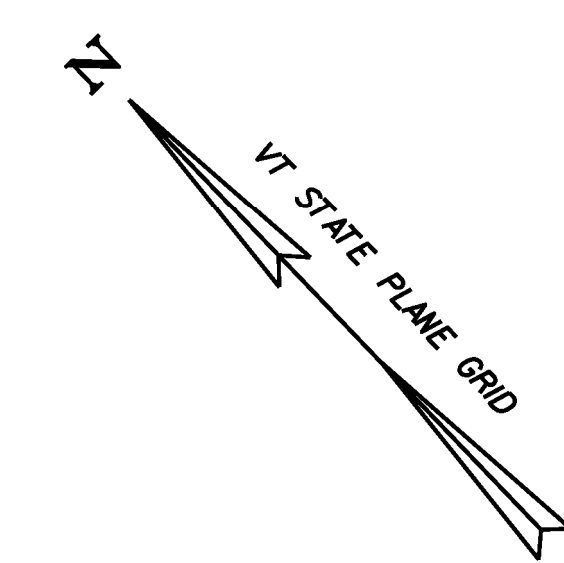
646.602 TEMPORARY 4 INCH WHITE LINE, PAINT
 (ALL LINES WILL INCLUDE EDGE LINE BREAKS AND RADIUS FOR TOWN HIGHWAYS)
 STOCKBRIDGE:
 STA 17+50.00 - STA 23+50.00 LT & RT

213.10 MILLED RUMBLE STRIPS
 (ALL CLRS WILL INCLUDE C/L BREAKS FOR TOWN HIGHWAYS)
 STOCKBRIDGE:
 STA 17+50.0 - STA 23+50.0 C/L (600.0 LF)

675.50 REMOVING SIGNS AS SHOWN - 1

646.414 DURABLE 4 INCH YELLOW LINE, POLYUREA
 (ALL LINES WILL INCLUDE C/L BREAKS FOR TOWN HIGHWAYS) S=SOLID, D=DASHED
 STOCKBRIDGE:
 STA 17+50.00 - STA 19+53.60 LT S
 STA 19+53.60 - STA 23+50.00 S S

646.612 TEMPORARY 4 INCH YELLOW LINE, PAINT
 (ALL LINES WILL INCLUDE C/L BREAKS FOR TOWN HIGHWAYS) S=SOLID, D=DASHED
 STOCKBRIDGE:
 STA 17+50.00 - STA 19+53.60 LT S
 STA 19+53.60 - STA 23+50.00 S S



621.20 STEEL BEAM GUARDRAIL
 STA 17+84.0 - 20+00.0 RT (216.5 LF)

STONE FILL, TYPE 1
 STA 17+50.0 - 18+80.0 RT
 STA 19+67.0 - 20+10.0 LT
 STA 19+85.0 - 22+45.0 RT
 STA 20+15.0 - 22+45.0 LT

616.305 BITUMINOUS CONCRETE CURB, TYPE A
 STOCKBRIDGE:
 STA 17+50.0 - STA 19+69.0 LT (219.0 LF)

621.205 STEEL BEAM GUARDRAIL, GALVANIZED W/8 FEET POSTS
 STOCKBRIDGE:
 STA 19+37.5 - STA 20+52.0 LT (114.5 LF)
 STA 17+50.0 - 20+69.0 LT (114.5 LF)

621.60 ANCHOR FOR STEEL BEAM RAIL
 STOCKBRIDGE:
 STA 20+45.5 - STA 20+57.0 LT (11.5 LF)
 STA 17+90.0 - STA 19+93.0 RT

621.80 REMOVAL AND DISPOSAL OF GUARDRAIL
 STOCKBRIDGE:
 STA 19+37.5 - STA 20+07.0 LT (69.5 LF)

~~621.75 REMOVE AND RESET GUARDRAIL~~
~~STOCKBRIDGE:~~
~~STA 17+50.0 - STA 19+37.5 LT (187.5 LF)~~

~~653.20 TEMPORARY EROSION MATTING~~
~~STOCKBRIDGE:~~
~~STA 20+50.0 - STA 21+50.0 RT (24.2 SY)~~

676.10 DELINEATOR WITH STEEL POST
 STOCKBRIDGE:
 STA 17+84.0 (2)
 STA 20+52.0 LT STA 20+00.0
 20+69.0

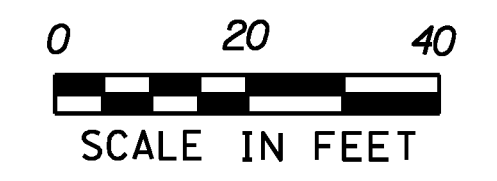
CURVE 3
 $\Delta = 3^\circ 43' 27''$
 $D = 1^\circ 41' 07''$
 $R = 3400.00'$
 $T = 110.54'$
 $L = 221.00'$
 $E = 1.80'$
 $e = 0.034 \text{ FT/FT}$

CURVE 4
 $\Delta = 12^\circ 03' 44''$
 $D = 2^\circ 17' 31''$
 $R = 2500.00'$
 $T = 264.13'$
 $L = 526.31'$
 $E = 13.91'$
 $e = 0.044 \text{ FT/FT}$

SOIL BORING DATA			
BORING #	DEPTH (FT.)	PCC	COMMENTS
B103	5.0	NO	

NOTES:

- THE CONTRACTOR SHALL BE AWARE THAT AN UNDERGROUND FIBER OPTIC FACILITY EXISTS ALONG VT 107. THE LOCATION SHOWN ON THE PLANS IS APPROXIMATE, AND THE POTENTIAL EXISTS FOR CONFLICTS WITH THE FIBER OPTIC AND THE PROPOSED UNDERDRAIN AT VARIOUS LOCATIONS THROUGHOUT THE PROJECT. THE CONTRACTOR IS ADVISED THAT, PRIOR TO CONSTRUCTION, ALL PROPOSED UNDERDRAIN LOCATIONS SHALL BE FIELD VERIFIED WITH THE ENGINEER AND RELOCATED AS NECESSARY TO ELIMINATE ANY CONFLICTS WITH THE FIBER OPTIC FACILITY.
- THE CONTRACTOR SHALL COLD PLANE THE TOP 4" OF EXISTING ROAD SURFACE, AND RECLAIM THE NEXT 8" OF THE EXISTING ROAD SURFACE AT FULL WIDTH. THE CONTRACTOR SHALL THEN PLACE 2" OF ITEM 651.35 TOPSOIL AND ITEM 651.15 SEED AS DIRECTED BY THE ENGINEER.
- SEE SHEET 28 FOR UNDERDRAIN DETAILS.



SIGN LEGEND
 R = REMOVE
 S = SALVAGE
 N = NEW
 RET = RETAIN
 B-B = BACK TO BACK
 EXISTING = -----
 NEW = _____

PROJECT LAYOUT SHEET #4	PROJECT NAME: STOCKBRIDGE-BETHEL	PLOT DATE: 3/17/2014
	PROJECT NUMBER: STP 2910(1)	DRAWN BY: W.G.P.
	FILE NAME: z10b214_bdr_nul_04.dgn	CHECKED BY: J.P.S.
	PROJECT LEADER: D.E.G.	SHEET 37 OF 397

FILE NAME: \\1720\projects\10b214\10b214_bdr_nul_04.dgn
 DATE: 3/17/2014
 USER: j.p.s.