
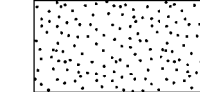


**LEGEND**

-  ITEM 613.10 STONE FILL, TYPE I
-  EXISTING PAVEMENT TO BE REMOVED (SEE NOTE 2)

~~646.402 DURABLE 4 INCH WHITE LINE, THERMOPLASTIC OR~~  
~~646.404 DURABLE 4 INCH WHITE LINE, POLYUREA~~  
 (ALL LINES WILL INCLUDE EDGE LINE BREAKS AND RADIUS FOR TOWN HIGHWAYS)  
 STOCKBRIDGE:  
 STA 11+50.00 - STA 17+50.00 LT & RT

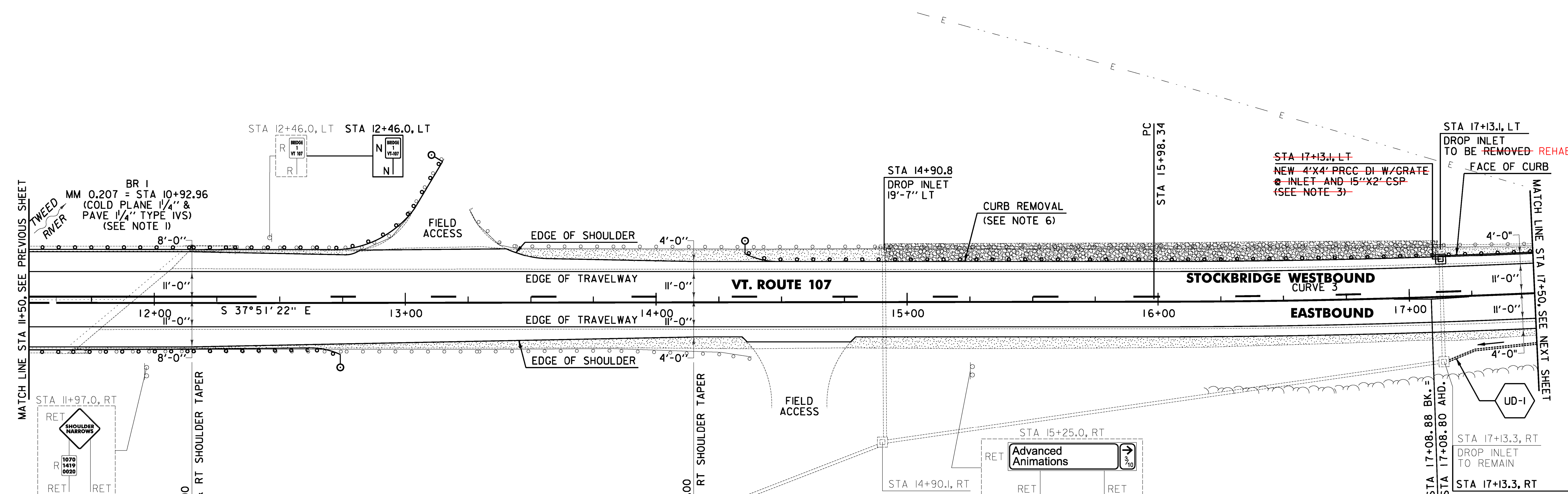
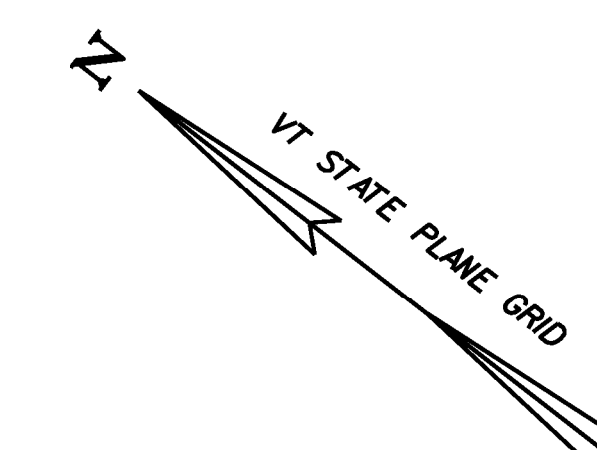
~~646.414 DURABLE 4 INCH YELLOW LINE, POLYUREA~~  
 (ALL LINES WILL INCLUDE C/L BREAKS FOR TOWN HIGHWAYS) S=SOLID, D=DASHED  
 STOCKBRIDGE:  
 STA 11+50.00 - STA 11+61.60 LT  
 STA 11+61.60 - STA 12+40.80 S  
 STA 12+40.80 - STA 17+50.00 D

646.602 TEMPORARY 4 INCH WHITE LINE, PAINT  
 (ALL LINES WILL INCLUDE EDGE LINE BREAKS AND RADIUS FOR TOWN HIGHWAYS)  
 STOCKBRIDGE:  
 STA 11+50.00 - STA 17+50.00 LT & RT

~~646.612 TEMPORARY 4 INCH YELLOW LINE, PAINT~~  
 (ALL LINES WILL INCLUDE C/L BREAKS FOR TOWN HIGHWAYS) S=SOLID, D=DASHED  
 STOCKBRIDGE:  
 STA 11+50.00 - STA 11+61.60 S  
 STA 11+61.60 - STA 12+40.80 S  
 STA 12+40.80 - STA 17+50.00 D

213.10 MILLED RUMBLE STRIPS  
 (ALL CLRS WILL INCLUDE C/L BREAKS FOR TOWN HIGHWAYS)  
 STOCKBRIDGE:  
 STA 11+50.00 - STA 17+50.00 C/L (600.0 LF)  
 12+36.0

675.50 REMOVING SIGNS AS SHOWN - 2



- 604.412, 604.415, 604.418 REHAB. DROP INLETS CATCH BASINS, OR MANHOLES CLASS I, II, OR III (SEE NOTE 5)  
 STOCKBRIDGE:  
 STA 14+90.8 LT 17+13.1 LT
- ~~604.47 CAST IRON GRATE WITH FRAME, TYPE D~~  
 STOCKBRIDGE:  
 STA 14+90.8 LT
- 613.10 STONE FILL, TYPE I  
 STOCKBRIDGE: 79.2  
 STA 14+91.0 - STA 17+12.0 LT (37.5 CY) 17+16.0 - 17+50.0 RT 15+50.0
- 616.305 BITUMINOUS CONCRETE CURB, TYPE A  
 STOCKBRIDGE: 41.0  
 STA 17+12.0 - STA 17+50.0 LT (38.0 LF) 17+09.0
- 621.20 STEEL BEAM GUARDRAIL, GALVANIZED  
 STOCKBRIDGE: STA 12+26.0 - 12+78.0 RT (52.0 LF)  
 STA 12+22.0 - STA 12+74.0 RT (52.0 LF)  
 STA 12+82.0 - STA 13+15.0 LT (52.0 LF)
- 621.205 STEEL BEAM GUARDRAIL, GALVANIZED W/8 FEET POSTS  
 STOCKBRIDGE: STA 14+19.0 - 17+78.0 RT (289.5 LF)  
 STA 14+35.5 - STA 17+25.0 LT (289.5 LF)

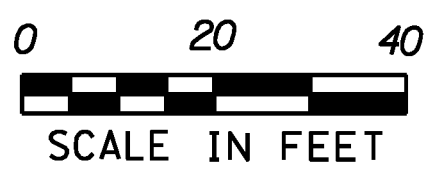
- 621.60 ANCHOR FOR STEEL BEAM RAIL  
 STOCKBRIDGE:  
 STA 12+67.5 RT  
 STA 13+15.0 LT  
 STA 14+42.0 LT
- 621.70 GUARDRAIL APPROACH SECTION, GALVANIZED TYPE I  
 STOCKBRIDGE: STA 11+76.0 - 12+26.0 RT  
 STA 11+72.0 - STA 12+22.0 RT  
 STA 12+32.0 - STA 12+82.0 LT
- ~~621.75 REMOVE AND RESET GUARDRAIL~~  
 STOCKBRIDGE:  
 STA 17+25.0 - STA 17+50.0 LT (25.0 LF)
- 621.80 REMOVAL AND DISPOSAL OF GUARDRAIL  
 STOCKBRIDGE:  
 STA 11+72.0 - STA 14+38.0 RT (266.0 LF)  
 STA 12+32.0 - STA 13+15.0 LT (101.0 LF)  
 STA 13+25.0 - STA 17+25.0 LT (400.0 LF) 17+50.0
- ~~649.31 GEOTEXTILE UNDER STONE FILL~~  
 STOCKBRIDGE:  
 STA 14+91.0 - STA 17+12.0 LT (142.2 SY)
- 676.10 DELINEATOR WITH STEEL POST  
 STOCKBRIDGE:  
 STA 12+74.0 RT  
 STA 13+15.0 LT  
 STA 14+35.5 LT

**NOTES:**

1. SEE SHEET 395 FOR BR I DETAILS.
2. THE CONTRACTOR SHALL COLD PLANE THE TOP 4" OF EXISTING ROAD SURFACE, AND RECLAIM THE NEXT 8" OF THE EXISTING ROAD SURFACE AT FULL WIDTH. THE CONTRACTOR SHALL THEN PLACE 2" OF ITEM 651.35 TOPSOIL AND ITEM 651.15 SEED AS DIRECTED BY THE ENGINEER IN AREAS WHERE EXISTING PAVEMENT WILL BE REMOVED PERMANENTLY.
3. THE CONTRACTOR SHALL FIELD VERIFY THE INVERT OF EXISTING PIPE PRIOR TO ORDERING PROPOSED DRAINAGE STRUCTURE.
4. THE CONTRACTOR SHALL BE AWARE THAT AN UNDERGROUND FIBER OPTIC FACILITY EXISTS ALONG VT 107. THE LOCATION SHOWN ON THE PLANS IS APPROXIMATE, AND THE POTENTIAL EXISTS FOR CONFLICTS WITH THE FIBER OPTIC AND THE PROPOSED UNDERDRAIN AT VARIOUS LOCATIONS THROUGHOUT THE PROJECT. THE CONTRACTOR IS ADVISED THAT, PRIOR TO CONSTRUCTION, ALL PROPOSED UNDERDRAIN LOCATIONS SHALL BE FIELD VERIFIED WITH THE ENGINEER AND RELOCATED AS NECESSARY TO ELIMINATE ANY CONFLICTS WITH THE FIBER OPTIC FACILITY.
5. THE CONTRACTOR SHALL REHABILITATE THE EXISTING DROP INLETS, CATCH BASINS OR MANHOLES TO A DEPTH AS DIRECTED BY THE ENGINEER. ALL REHABILITATION WORK WILL BE PAID FOR UNDER THE APPLICABLE REHABILITATION ITEM AS DIRECTED BY THE ENGINEER. ALL EXISTING UTILITIES MARKED "TO REMAIN" SHALL NOT BE ALTERED OR REHABILITATED UNLESS DIRECTED OTHERWISE BY THE ENGINEER.
6. SEE SHEET 26 FOR CURB REMOVAL AND STONE FILL BACKING DETAILS.
7. SEE SHEET 28 FOR UNDERDRAIN DETAILS.

**CURVE 3**  
 $\Delta = 3^\circ 43' 27''$   
 $D = 1^\circ 41' 07''$   
 $R = 3400.00'$   
 $T = 110.54'$   
 $L = 221.00'$   
 $E = 1.80'$   
 $e = 0.034 \text{ FT/FT}$

**SIGN LEGEND**  
 R = REMOVE  
 S = SALVAGE  
 N = NEW  
 RET = RETAIN  
 B-B = BACK TO BACK  
 EXISTING = -----  
 NEW = \_\_\_\_\_



<b>PROJECT LAYOUT SHEET #3</b>	PROJECT NAME: STOCKBRIDGE-BETHEL	PLOT DATE: 3/17/2014
	PROJECT NUMBER: STP 2910(1)	DRAWN BY: W.G.P.
	FILE NAME: z10b214_bdr_nul_03.dgn	CHECKED BY: J.P.S.
	PROJECT LEADER: D.E.G.	SHEET 36 OF 397

FILE NAME: V:\1720\stg1\AMV\1222426\CADD\1\STP\10b214\_bdr\_nul\_03.dgn  
 DATE: 3/17/2014  
 USER: J.4916