

Figure 6H-4. Short-Duration or Mobile Operation on a Shoulder (TA-4)

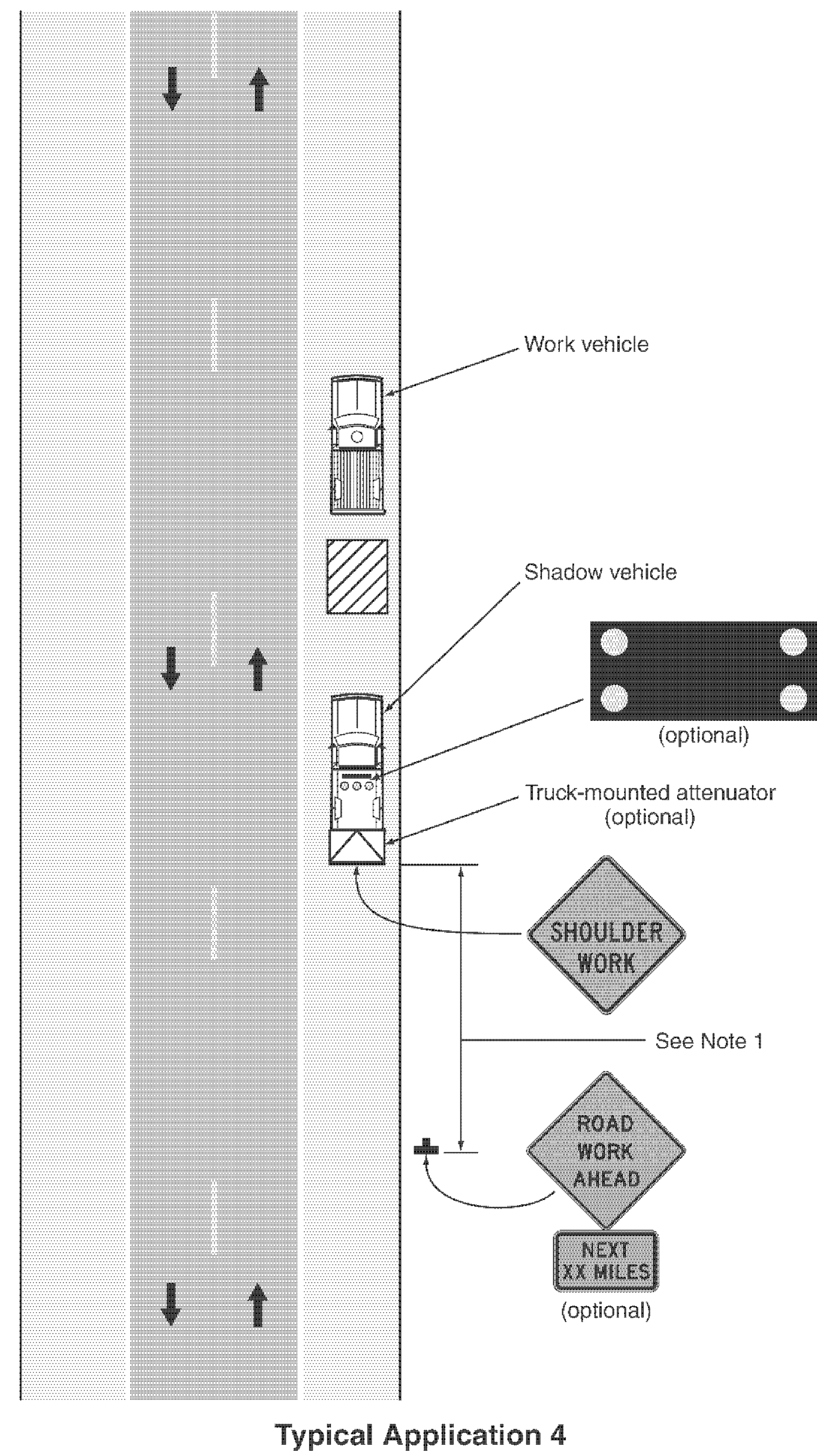


Figure 6H-6. Shoulder Work with Minor Encroachment (TA-6)

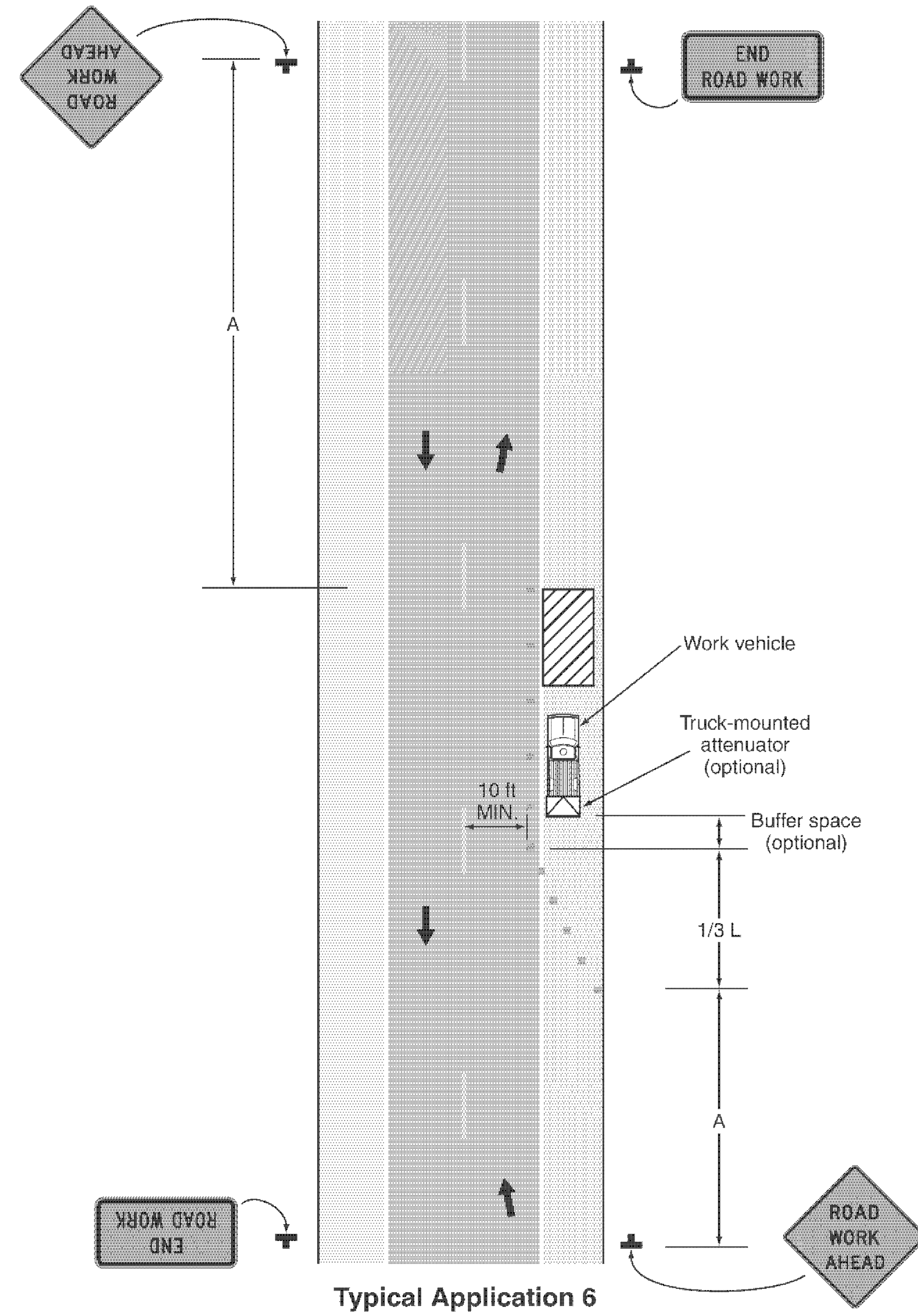
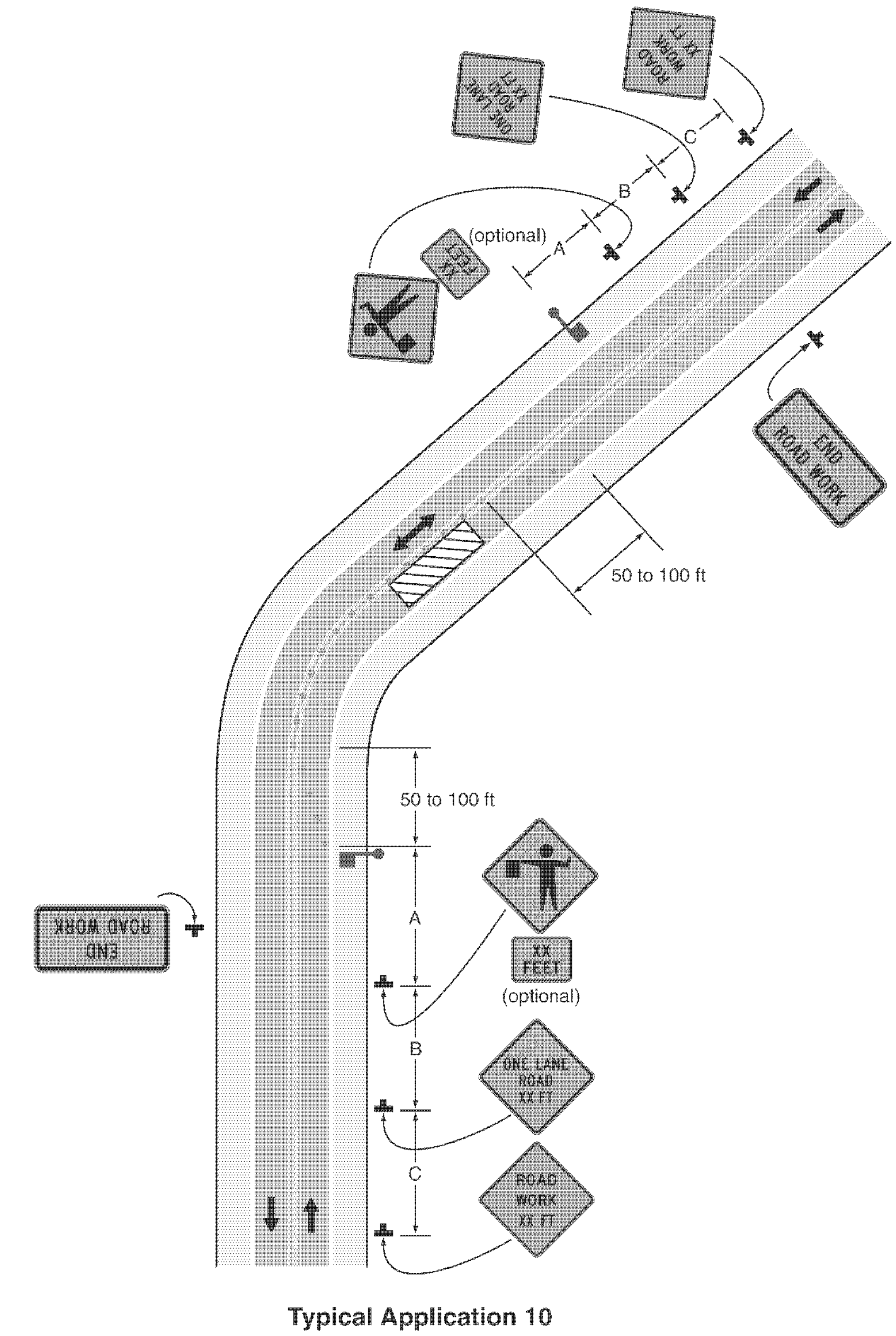


Figure 6H-10. Lane Closure on a Two-Lane Road Using Flaggers (TA-10)



**NOTES**

1. IF TRUCK MOUNTED ATTENUATOR IS REQUESTED BY THE ENGINEER OR CONTRACTOR, PAYMENT FOR THIS ITEM SHALL BE INCIDENTAL TO ITEM 641.10 "TRAFFIC CONTROL".
2. SEE SHEET 100 FOR THE MEANING OF LETTER CODES AND SYMBOLS USED IN THIS FIGURE.

**NOT TO SCALE**

**TRAFFIC CONTROL SHEET 3**

PROJECT NAME: CHARLOTTE - SOUTH BURLINGTON  
PROJECT NUMBER: NH 2907(1)

FILE NAME: p10B206.dgn  
PROJECT LEADER: CDL  
DESIGNED BY: BMB  
PLOT FILE: p10B206\_102.1

PLOT DATE: 4/19/12  
DRAWN BY: BMB  
CHECKED BY: EPD  
SHEET 102 OF 107