

Figure 6C-2. Types of Tapers and Buffer Spaces

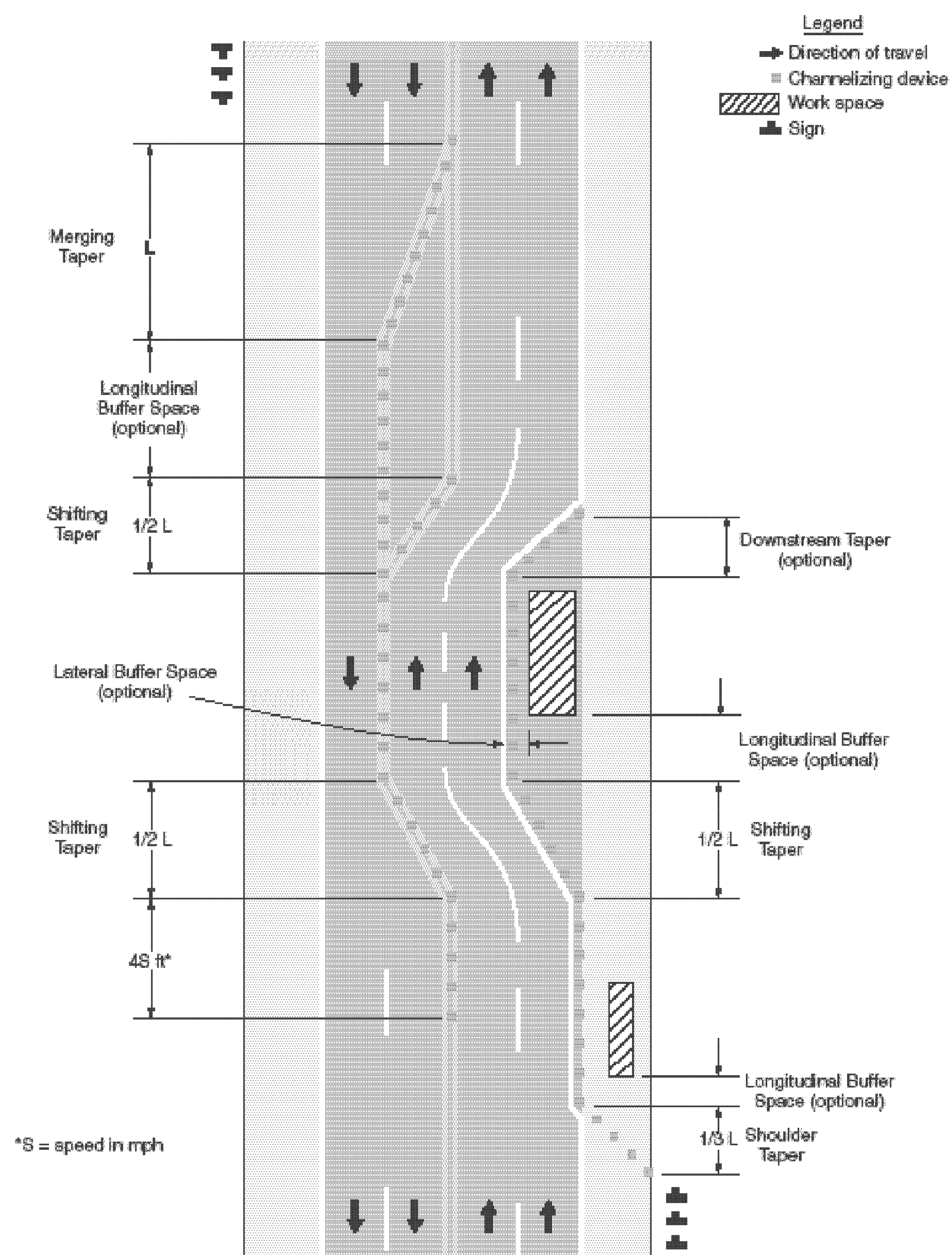
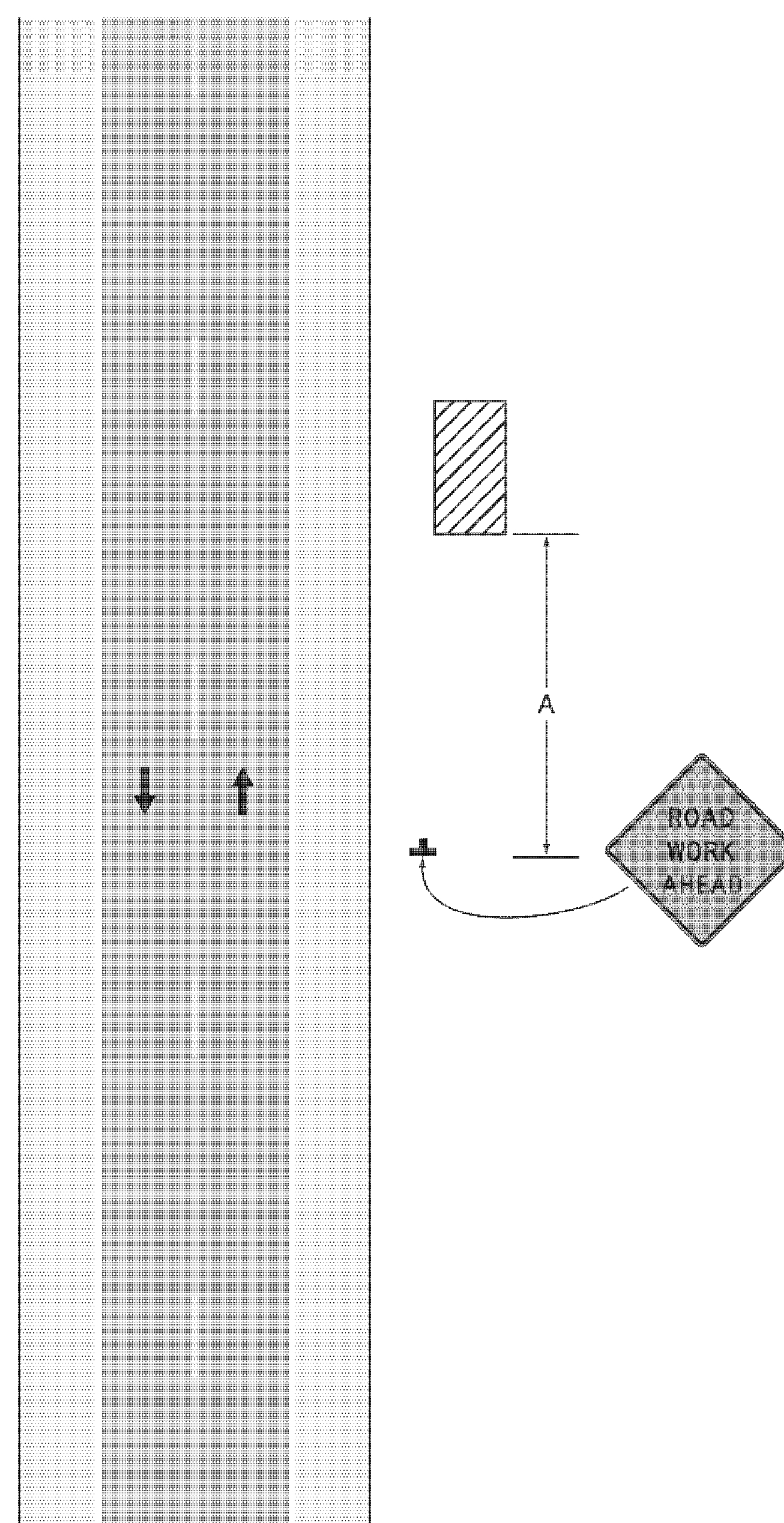
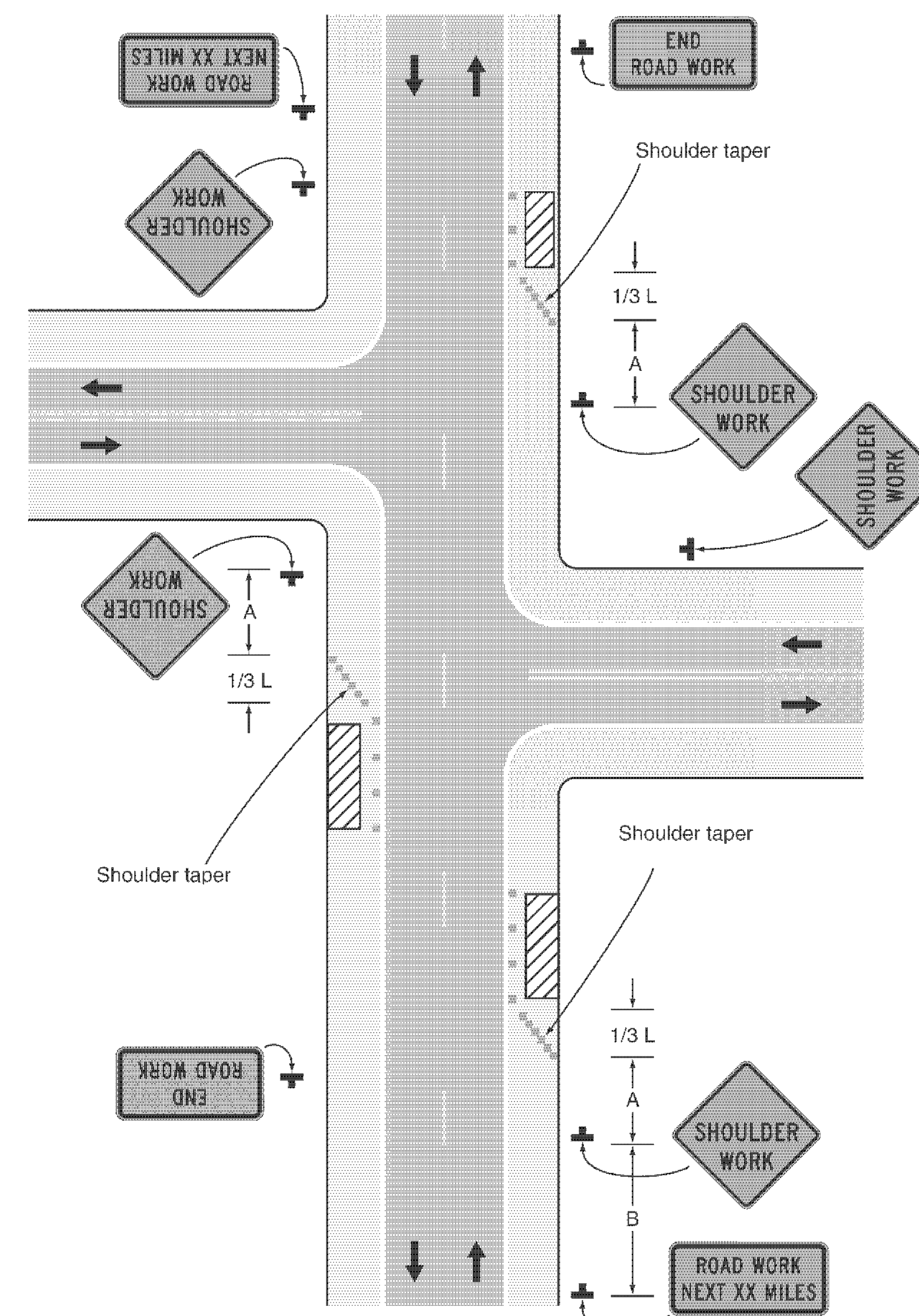


Figure 6H-1. Work Beyond the Shoulder (TA-1)



Typical Application 1

Figure 6H-3. Work on the Shoulders (TA-3)



Typical Application 3

Table 6C-3. Taper Length Criteria for Temporary Traffic Control Zones

Type of Taper	Taper Length
Merging Taper	at least L
Shifting Taper	at least 0.5 L
Shoulder Taper	at least 0.33 L
One-Lane, Two-Way Traffic Taper	50 feet minimum, 100 feet maximum
Downstream Taper	50 feet minimum, 100 feet maximum

Note: Use Table 6C-4 to calculate L

Table 6C-4. Formulas for Determining Taper Length

Speed (S)	Taper Length (L) in feet
40 mph or less	$L = \frac{WS^2}{60}$
45 mph or more	$L = WS$

Where: L = taper length in feet
 W = width of offset in feet
 S = posted speed limit, or off-peak 85th-percentile speed prior to work starting, or the anticipated operating speed in mph

NOTES

1. SEE SHEET 100 FOR THE MEANING OF THE LETTER CODES AND SYMBOLS USED IN THIS FIGURE.

TRAFFIC CONTROL SHEET 2

PROJECT NAME: CHARLOTTE - SOUTH BURLINGTON
 PROJECT NUMBER: NH 2907(I)

FILE NAME: p10B206.dgn
 PROJECT LEADER: CDL
 DESIGNED BY: BMB
 PLOT FILE: p10B206_101.I

PLOT DATE: 4/19/12
 DRAWN BY: BMB
 CHECKED BY: EPD
 SHEET 101 OF 107