

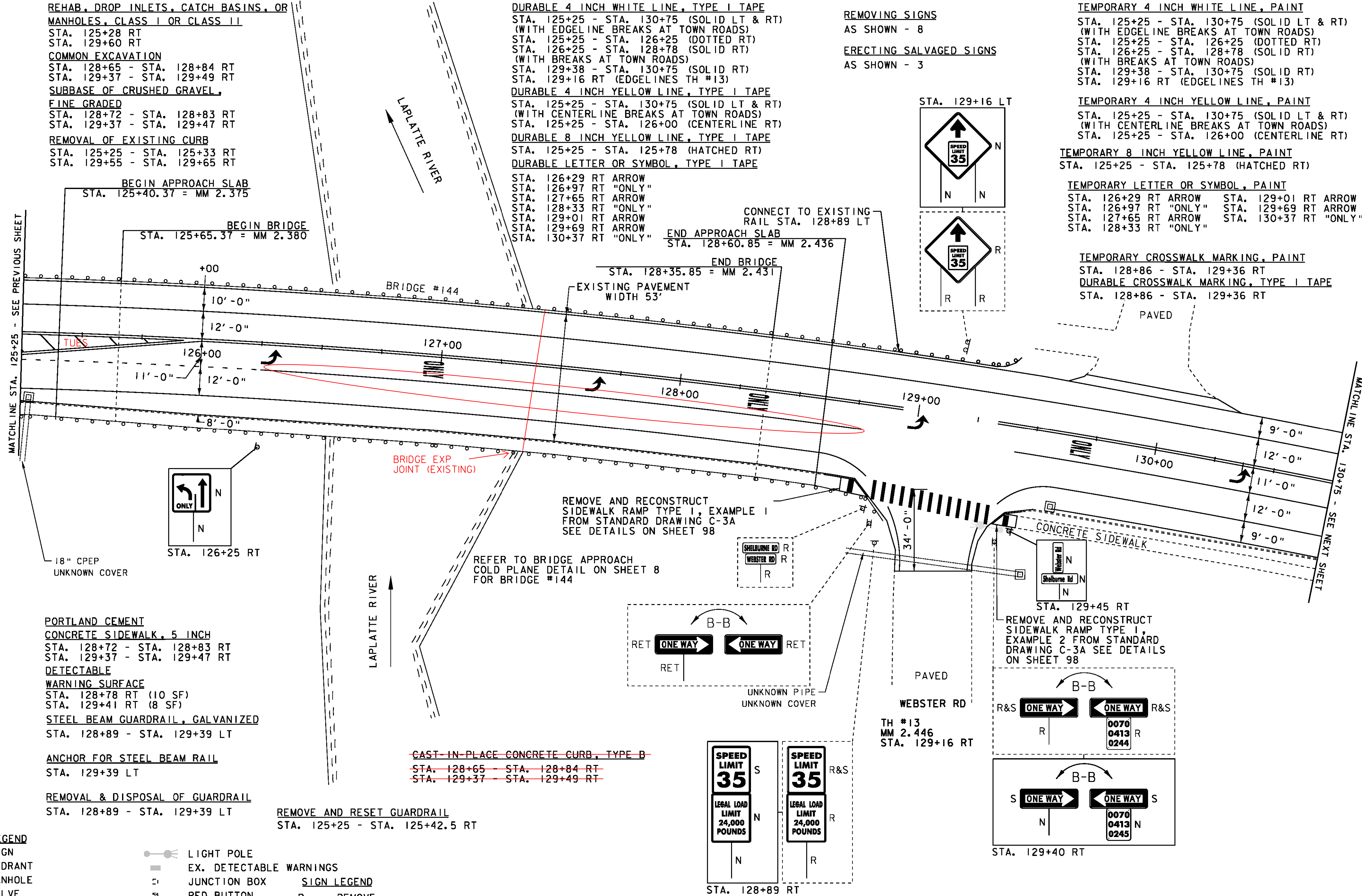
REHAB, DROP INLETS, CATCH BASINS, OR MANHOLES, CLASS I OR CLASS II
 STA. 125+28 RT
 STA. 129+60 RT
 COMMON EXCAVATION
 STA. 128+65 - STA. 128+84 RT
 STA. 129+37 - STA. 129+49 RT
 SUBBASE OF CRUSHED GRAVEL
 FINE GRADED
 STA. 128+72 - STA. 128+83 RT
 STA. 129+37 - STA. 129+47 RT
 REMOVAL OF EXISTING CURB
 STA. 125+25 - STA. 125+33 RT
 STA. 129+55 - STA. 129+65 RT

DURABLE 4 INCH WHITE LINE, TYPE I TAPE
 STA. 125+25 - STA. 130+75 (SOLID LT & RT) (WITH EDGELINE BREAKS AT TOWN ROADS)
 STA. 125+25 - STA. 126+25 (DOTTED RT)
 STA. 126+25 - STA. 128+78 (SOLID RT) (WITH BREAKS AT TOWN ROADS)
 STA. 129+38 - STA. 130+75 (SOLID RT)
 STA. 129+16 RT (EDGELINES TH #13)
 DURABLE 4 INCH YELLOW LINE, TYPE I TAPE
 STA. 125+25 - STA. 130+75 (SOLID LT & RT) (WITH CENTERLINE BREAKS AT TOWN ROADS)
 STA. 125+25 - STA. 126+00 (CENTERLINE RT)
 DURABLE 8 INCH YELLOW LINE, TYPE I TAPE
 STA. 125+25 - STA. 125+78 (HATCHED RT)
 DURABLE LETTER OR SYMBOL, TYPE I TAPE
 STA. 126+29 RT ARROW
 STA. 126+97 RT "ONLY"
 STA. 127+65 RT ARROW
 STA. 128+33 RT "ONLY"
 STA. 129+01 RT ARROW
 STA. 129+69 RT ARROW
 STA. 130+37 RT "ONLY"

REMOVING SIGNS
 AS SHOWN - 8
 ERECTING SALVAGED SIGNS
 AS SHOWN - 3

TEMPORARY 4 INCH WHITE LINE, PAINT
 STA. 125+25 - STA. 130+75 (SOLID LT & RT) (WITH EDGELINE BREAKS AT TOWN ROADS)
 STA. 125+25 - STA. 126+25 (DOTTED RT) (WITH BREAKS AT TOWN ROADS)
 STA. 129+38 - STA. 130+75 (SOLID RT) (EDGELINES TH #13)
 TEMPORARY 4 INCH YELLOW LINE, PAINT
 STA. 125+25 - STA. 130+75 (SOLID LT & RT) (WITH CENTERLINE BREAKS AT TOWN ROADS)
 STA. 125+25 - STA. 126+00 (CENTERLINE RT)
 TEMPORARY 8 INCH YELLOW LINE, PAINT
 STA. 125+25 - STA. 125+78 (HATCHED RT)
 TEMPORARY LETTER OR SYMBOL, PAINT
 STA. 126+29 RT ARROW
 STA. 126+97 RT "ONLY"
 STA. 127+65 RT ARROW
 STA. 128+33 RT "ONLY"
 STA. 129+01 RT ARROW
 STA. 129+69 RT ARROW
 STA. 130+37 RT "ONLY"

TEMPORARY CROSSWALK MARKING, PAINT
 STA. 128+86 - STA. 129+36 RT
 DURABLE CROSSWALK MARKING, TYPE I TAPE
 STA. 128+86 - STA. 129+36 RT



BEGIN APPROACH SLAB
 STA. 125+40.37 = MM 2.375

BEGIN BRIDGE
 STA. 125+65.37 = MM 2.380

END APPROACH SLAB
 STA. 128+60.85 = MM 2.436

END BRIDGE
 STA. 128+35.85 = MM 2.431

PORTLAND CEMENT
 CONCRETE SIDEWALK, 5 INCH
 STA. 128+72 - STA. 128+83 RT
 STA. 129+37 - STA. 129+47 RT

DETECTABLE
 WARNING SURFACE
 STA. 128+78 RT (10 SF)
 STA. 129+41 RT (8 SF)

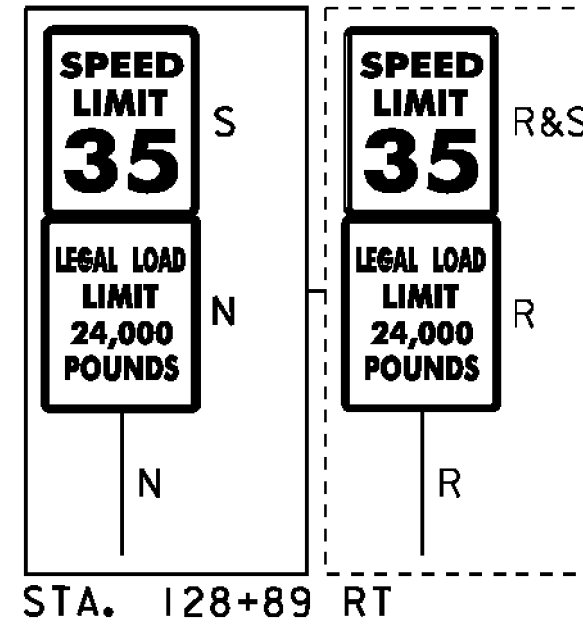
STEEL BEAM GUARDRAIL, GALVANIZED
 STA. 128+89 - STA. 129+39 LT

ANCHOR FOR STEEL BEAM RAIL
 STA. 129+39 LT

REMOVAL & DISPOSAL OF GUARDRAIL
 STA. 128+89 - STA. 129+39 LT

REMOVE AND RESET GUARDRAIL
 STA. 125+25 - STA. 125+42.5 RT

~~CAST-IN-PLACE CONCRETE CURB, TYPE B~~
~~STA. 128+65 - STA. 128+84 RT~~
~~STA. 129+37 - STA. 129+49 RT~~



PROJECT LAYOUT SHEET 23	PROJECT NAME: CHARLOTTE-SOUTH BURLINGTON	PLOT DATE: 4/19/12
	PROJECT NUMBER: NH 2907(I)	DRAWN BY: BMB
	FILE NAME: pi0B206.dgn	CHECKED BY: EPD
	PROJECT LEADER: CDL	SHEET 39 OF 107
	DESIGNED BY: BMB	
	PLOT FILE: pi0B206_39.J	

NOT TO SCALE

- LEGEND**
- | | | | | | |
|---|--------------------------|---|----------------------|-----|-------------------------|
| ○ | SIGN | ○ | LIGHT POLE | ○ | EX. DETECTABLE WARNINGS |
| ○ | HYDRANT | □ | JUNCTION BOX | ○ | SIGN LEGEND |
| ○ | MANHOLE | ○ | PED BUTTON | R | = REMOVE |
| ○ | VALVE | ○ | ELECTRICAL BOX | R&S | = REMOVE AND SALVAGE |
| ○ | GAS PIPELINE MARKER | ○ | SIGNAL | RET | = RETAIN |
| ○ | CATCH BASIN / DROP INLET | ○ | PEDESTAL POST | S | = SALVAGE |
| ○ | CURB INLET | ○ | STRAIN POLE | N | = NEW |
| ○ | TRAFFIC CONTROL BOX | ○ | CAMERA | B-B | = BACK TO BACK |
| ○ | PARKING METER | ○ | VIDEO DETECTION ZONE | | |
| ○ | UTILITY POLE | | | | |