

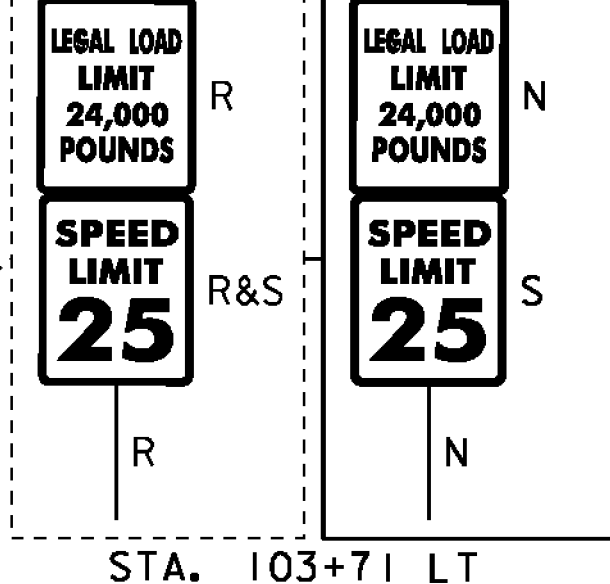
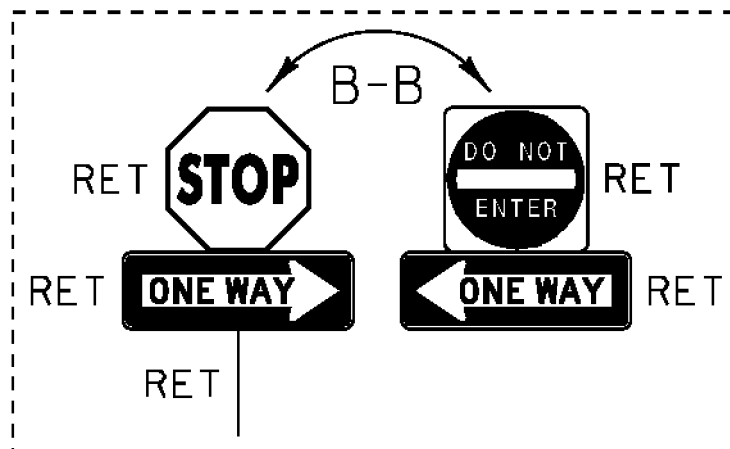
REHAB. DROP INLETS, CATCH BASINS, OR MANHOLES, CLASS I OR CLASS II
 STA. 103+30 RT
 STA. 103+67 RT
 STA. 104+66 RT
 CHANGING ELEVATION OF SEWER MANHOLES
 STA. 103+66 LT

REMOVE AND RECONSTRUCT SIDEWALK RAMP TYPE 1, EXAMPLE 2 FROM STANDARD DRAWING C-3A SEE DETAILS ON SHEET 98

END SHOULDER WIDENING STA. 103+12 SEE DETAIL ON SHEET 6

END SHOULDER WIDENING STA. 103+14 SEE DETAIL ON SHEET 6

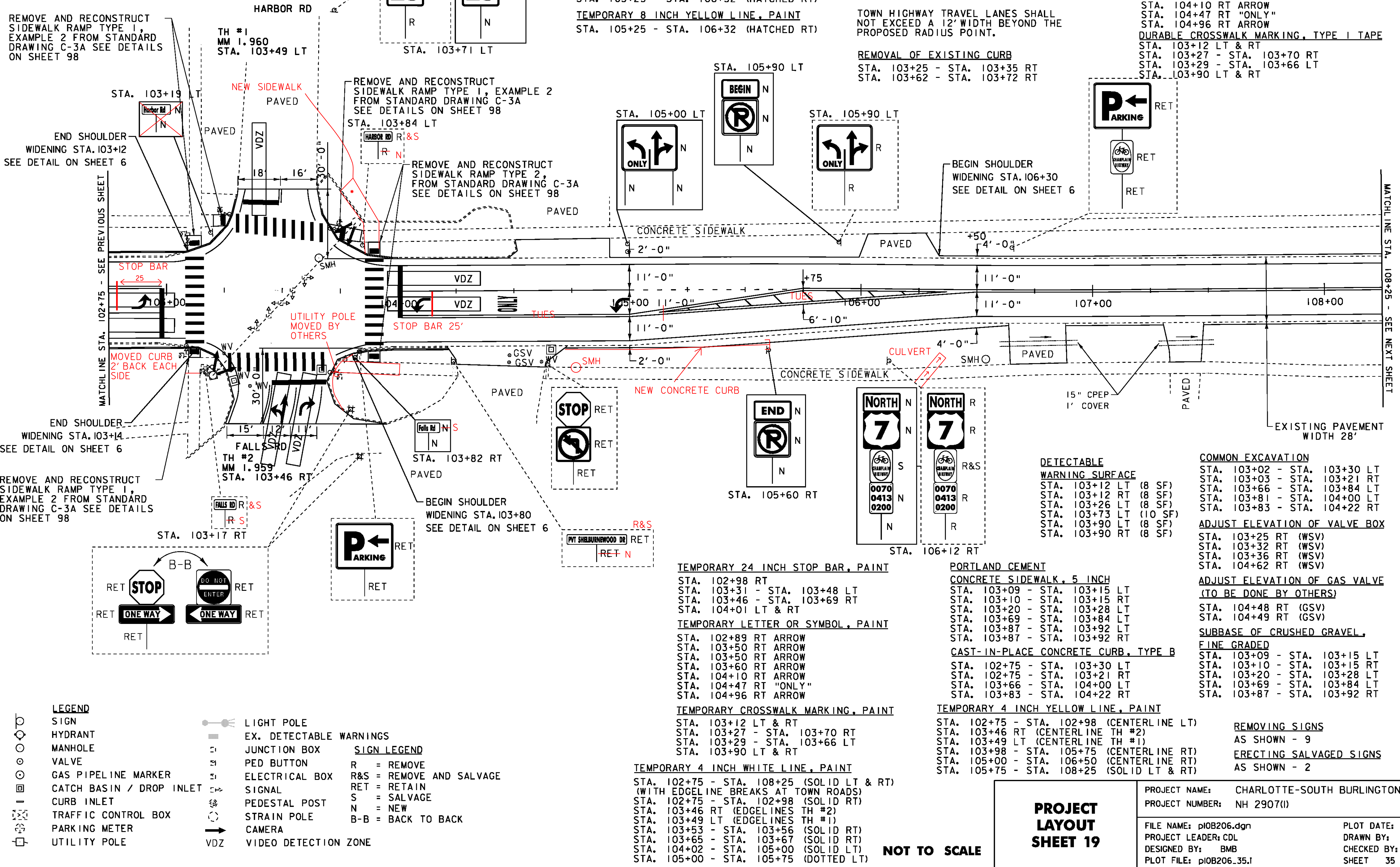
REMOVE AND RECONSTRUCT SIDEWALK RAMP TYPE 1, EXAMPLE 2 FROM STANDARD DRAWING C-3A SEE DETAILS ON SHEET 98



DURABLE 4 INCH YELLOW LINE, TYPE I TAPE
 STA. 102+75 - STA. 102+98 (CENTERLINE LT)
 STA. 103+46 RT (CENTERLINE TH #2)
 STA. 103+49 LT (CENTERLINE TH #1)
 STA. 104+02 - STA. 105+75 (CENTERLINE RT)
 STA. 105+00 - STA. 106+50 (CENTERLINE RT)
 STA. 105+75 - STA. 108+25 (SOLID LT & RT)
 DURABLE 8 INCH YELLOW LINE, TYPE I TAPE
 STA. 105+25 - STA. 106+32 (HATCHED RT)
 TEMPORARY 8 INCH YELLOW LINE, PAINT
 STA. 105+25 - STA. 106+32 (HATCHED RT)

DURABLE 4 INCH WHITE LINE, TYPE I TAPE
 STA. 102+75 - STA. 108+25 (SOLID LT & RT) (WITH EDGELINE BREAKS AT TOWN ROADS)
 STA. 102+75 - STA. 102+98 (SOLID RT)
 STA. 103+46 RT (EDGELINES TH #2)
 STA. 103+49 LT (EDGELINES TH #1)
 STA. 103+53 - STA. 103+56 (SOLID RT)
 STA. 103+65 - STA. 103+67 (SOLID RT)
 STA. 104+02 - STA. 105+00 (SOLID LT)
 STA. 105+00 - STA. 105+75 (DOTTED LT)
 TOWN HIGHWAY TRAVEL LANES SHALL NOT EXCEED A 12' WIDTH BEYOND THE PROPOSED RADIUS POINT.

DURABLE 24 INCH STOP BAR, TYPE I TAPE
 STA. 102+98 RT
 STA. 103+31 - STA. 103+48 LT
 STA. 103+46 - STA. 103+69 RT
 STA. 104+01 LT & RT
 DURABLE LETTER OR SYMBOL, TYPE I TAPE
 STA. 102+89 RT ARROW
 STA. 103+50 RT ARROW
 STA. 103+50 RT ARROW
 STA. 103+60 RT ARROW
 STA. 104+10 RT ARROW
 STA. 104+47 RT "ONLY"
 STA. 104+96 RT ARROW
 DURABLE CROSSWALK MARKING, TYPE I TAPE
 STA. 103+12 LT & RT
 STA. 103+27 - STA. 103+70 RT
 STA. 103+29 - STA. 103+66 LT
 STA. 103+90 LT & RT



- LEGEND**
- SIGN
 - HYDRANT
 - MANHOLE
 - VALVE
 - GAS PIPELINE MARKER
 - CATCH BASIN / DROP INLET
 - CURB INLET
 - TRAFFIC CONTROL BOX
 - PARKING METER
 - UTILITY POLE
 - LIGHT POLE
 - EX. DETECTABLE WARNINGS
 - JUNCTION BOX
 - PED BUTTON
 - ELECTRICAL BOX
 - SIGNAL
 - PEDESTAL POST
 - STRAIN POLE
 - CAMERA
 - VIDEO DETECTION ZONE
- SIGN LEGEND**
- R = REMOVE
 - R&S = REMOVE AND SALVAGE
 - RET = RETAIN
 - S = SALVAGE
 - N = NEW
 - B-B = BACK TO BACK

TEMPORARY 24 INCH STOP BAR, PAINT
 STA. 102+98 RT
 STA. 103+31 - STA. 103+48 LT
 STA. 103+46 - STA. 103+69 RT
 STA. 104+01 LT & RT
 TEMPORARY LETTER OR SYMBOL, PAINT
 STA. 102+89 RT ARROW
 STA. 103+50 RT ARROW
 STA. 103+50 RT ARROW
 STA. 103+60 RT ARROW
 STA. 104+10 RT ARROW
 STA. 104+47 RT "ONLY"
 STA. 104+96 RT ARROW
 TEMPORARY CROSSWALK MARKING, PAINT
 STA. 103+12 LT & RT
 STA. 103+27 - STA. 103+70 RT
 STA. 103+29 - STA. 103+66 LT
 STA. 103+90 LT & RT
 TEMPORARY 4 INCH WHITE LINE, PAINT
 STA. 102+75 - STA. 108+25 (SOLID LT & RT) (WITH EDGELINE BREAKS AT TOWN ROADS)
 STA. 102+75 - STA. 102+98 (SOLID RT)
 STA. 103+46 RT (EDGELINES TH #2)
 STA. 103+49 LT (EDGELINES TH #1)
 STA. 103+53 - STA. 103+56 (SOLID RT)
 STA. 103+65 - STA. 103+67 (SOLID RT)
 STA. 104+02 - STA. 105+00 (SOLID LT)
 STA. 105+00 - STA. 105+75 (DOTTED LT)

PORTLAND CEMENT
 CONCRETE SIDEWALK, 5 INCH
 STA. 103+09 - STA. 103+15 LT
 STA. 103+10 - STA. 103+15 RT
 STA. 103+20 - STA. 103+28 LT
 STA. 103+69 - STA. 103+84 LT
 STA. 103+87 - STA. 103+92 LT
 STA. 103+87 - STA. 103+92 RT
 CAST-IN-PLACE CONCRETE CURB, TYPE B
 STA. 102+75 - STA. 103+30 LT
 STA. 102+75 - STA. 103+21 RT
 STA. 103+66 - STA. 104+00 LT
 STA. 103+83 - STA. 104+22 RT
 TEMPORARY 4 INCH YELLOW LINE, PAINT
 STA. 102+75 - STA. 102+98 (CENTERLINE LT)
 STA. 103+46 RT (CENTERLINE TH #2)
 STA. 103+49 LT (CENTERLINE TH #1)
 STA. 103+98 - STA. 105+75 (CENTERLINE RT)
 STA. 105+00 - STA. 106+50 (CENTERLINE RT)
 STA. 105+75 - STA. 108+25 (SOLID LT & RT)

PROJECT LAYOUT SHEET 19

NOT TO SCALE

DETECTABLE WARNING SURFACE
 STA. 103+12 LT (8 SF)
 STA. 103+12 RT (8 SF)
 STA. 103+26 LT (8 SF)
 STA. 103+73 LT (10 SF)
 STA. 103+90 LT (8 SF)
 STA. 103+90 RT (8 SF)

COMMON EXCAVATION
 STA. 103+02 - STA. 103+30 LT
 STA. 103+03 - STA. 103+21 RT
 STA. 103+66 - STA. 103+84 LT
 STA. 103+81 - STA. 104+00 LT
 STA. 103+83 - STA. 104+22 RT

ADJUST ELEVATION OF VALVE BOX
 STA. 103+25 RT (WSV)
 STA. 103+32 RT (WSV)
 STA. 103+36 RT (WSV)
 STA. 104+62 RT (WSV)

ADJUST ELEVATION OF GAS VALVE (TO BE DONE BY OTHERS)
 STA. 104+48 RT (GSV)
 STA. 104+49 RT (GSV)

SUBBASE OF CRUSHED GRAVEL, FINE GRADED
 STA. 103+09 - STA. 103+15 LT
 STA. 103+10 - STA. 103+15 RT
 STA. 103+20 - STA. 103+28 LT
 STA. 103+69 - STA. 103+84 LT
 STA. 103+87 - STA. 103+92 RT

REMOVING SIGNS
 AS SHOWN - 9

ERECTING SALVAGED SIGNS
 AS SHOWN - 2

PROJECT NAME: CHARLOTTE-SOUTH BURLINGTON
 PROJECT NUMBER: NH 2907(II)
 FILE NAME: p10B206.dgn
 PROJECT LEADER: CDL
 DESIGNED BY: BMB
 PLOT FILE: p10B206.35.I
 PLOT DATE: 4/19/12
 DRAWN BY: BMB
 CHECKED BY: EPD
 SHEET 35 OF 107