

DURABLE 4 INCH WHITE LINE, TYPE I TAPE
 STA. 92+50 - STA. 98+25 (SOLID LT & RT)
 (WITH EDGELINE BREAKS AT TOWN ROADS AND CROSSWALKS)
 STA. 94+10 RT (EDGELINES TH #15)

DURABLE 4 INCH YELLOW LINE, TYPE I TAPE
 STA. 92+50 - STA. 98+25 (CENTERLINE LT)
 (WITH CENTERLINE BREAKS AT TOWN ROADS AND CROSSWALKS)
 STA. 94+10 RT (CENTERLINE TH#15)

DURABLE 24 INCH STOP BAR, TYPE I TAPE
 STA. 94+11 - STA. 94+34 RT

DURABLE LETTER OR SYMBOL, TYPE I TAPE
 STA. 94+16 RT "STOP" (TH #15)

DURABLE CROSSWALK MARKING, TYPE I TAPE
 STA. 93+95 - STA. 94+32 RT
 STA. 94+52 LT & RT

TEMPORARY 4 INCH WHITE LINE, PAINT
 STA. 92+50 - STA. 98+25 (SOLID LT & RT)
 (WITH EDGELINE BREAKS AT TOWN ROADS AND CROSSWALKS)
 STA. 94+10 RT (EDGELINES TH #15)

TEMPORARY 4 INCH YELLOW LINE, PAINT
 STA. 92+50 - STA. 98+25 (CENTERLINE LT)
 (WITH CENTERLINE BREAKS AT TOWN ROADS AND CROSSWALKS)
 STA. 94+10 RT (CENTERLINE TH#15)

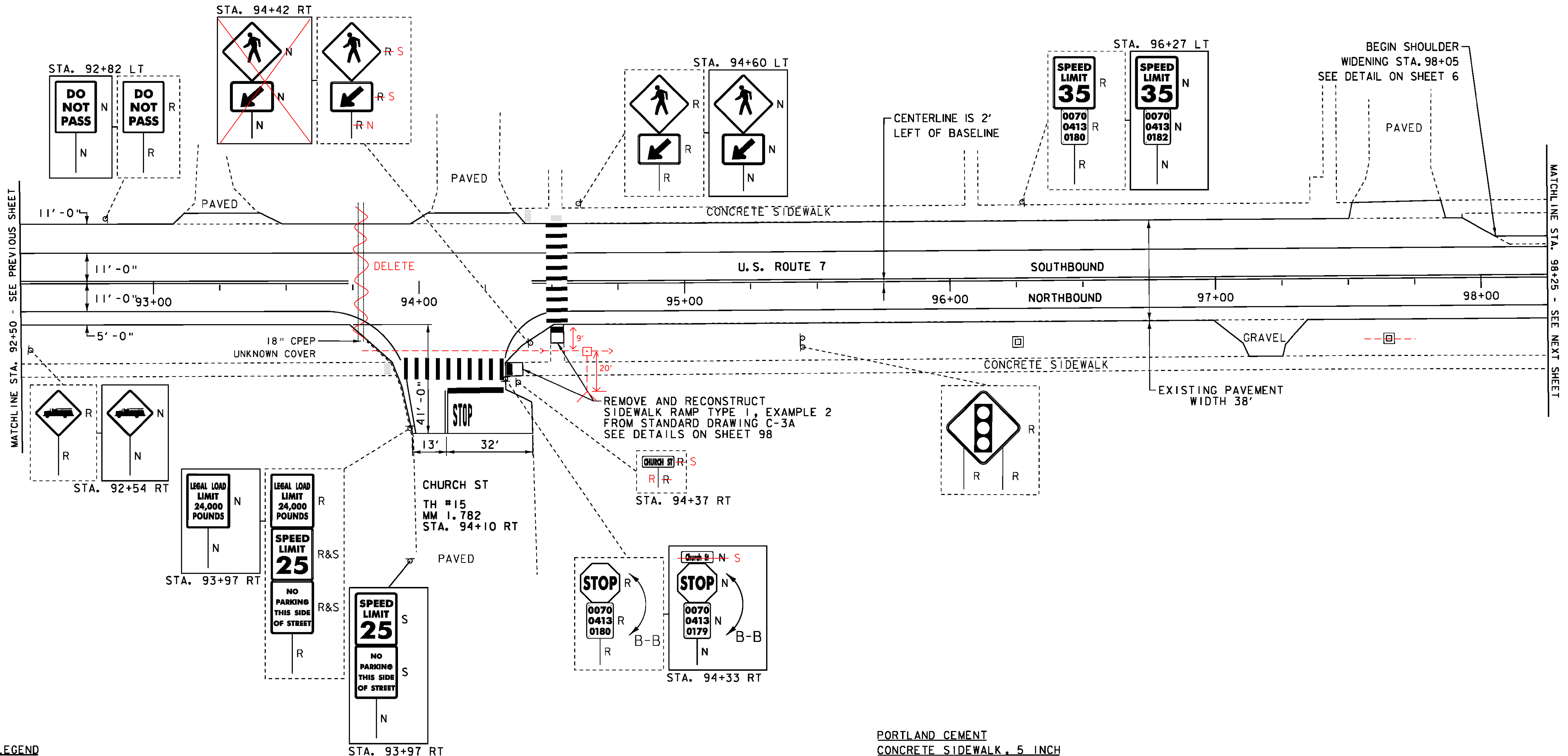
TEMPORARY 24 INCH STOP BAR, PAINT
 STA. 94+11 - STA. 94+34 RT

TEMPORARY LETTER OR SYMBOL, PAINT
 STA. 94+16 RT "STOP" (TH #15)

TEMPORARY CROSSWALK MARKING, PAINT
 STA. 93+95 - STA. 94+32 RT
 STA. 94+52 LT & RT

REMOVING SIGNS
 AS SHOWN - 15

ERECTING SALVAGED SIGNS
 AS SHOWN - 2



- LEGEND**
- SIGN
 - HYDRANT
 - MANHOLE
 - VALVE
 - GAS PIPELINE MARKER
 - ⊠ CATCH BASIN / DROP INLET
 - CURB INLET
 - ⊠ TRAFFIC CONTROL BOX
 - ⊠ PARKING METER
 - ⊠ UTILITY POLE
 - LIGHT POLE
 - ⊠ EX. DETECTABLE WARNINGS
 - ⊠ JUNCTION BOX
 - ⊠ PED BUTTON
 - ⊠ ELECTRICAL BOX
 - ⊠ SIGNAL
 - ⊠ PEDESTAL POST
 - ⊠ STRAIN POLE
 - ⊠ CAMERA
 - ⊠ VIDEO DETECTION ZONE
- SIGN LEGEND**
- R = REMOVE
 - R&S = REMOVE AND SALVAGE
 - RET = RETAIN
 - S = SALVAGE
 - N = NEW
 - B-B = BACK TO BACK

- COMMON EXCAVATION**
- STA. 94+33 - STA. 94+39 RT
 - STA. 94+49 - STA. 94+54 RT
- SUBBASE OF CRUSHED GRAVEL, FINE GRADED**
- STA. 94+33 - STA. 94+39 RT
 - STA. 94+49 - STA. 94+54 RT

PORTLAND CEMENT CONCRETE SIDEWALK, 5 INCH
 STA. 94+33 - STA. 94+39 RT
 STA. 94+49 - STA. 94+54 RT

DETECTABLE WARNING SURFACE
 STA. 94+34 RT (8 SF)
 STA. 94+52 RT (8 SF)

NOT TO SCALE

PROJECT LAYOUT SHEET 17	PROJECT NAME: CHARLOTTE-SOUTH BURLINGTON
	PROJECT NUMBER: NH 2907(1)
FILE NAME: p10B206.dgn	PLOT DATE: 4/19/12
PROJECT LEADER: CDL	DRAWN BY: BMB
DESIGNED BY: BMB	CHECKED BY: EPD
PLOT FILE: p10B206_33.I	SHEET 33 OF 107