

REHAB. DROP INLETS, CATCH
BASINS, OR MANHOLES, CLASS I OR CLASS II
STA. 88+97 LT
STA. 91+09 LT

DURABLE 4 INCH WHITE LINE, TYPE I TAPE
STA. 87+25 - STA. 92+50 (SOLID LT & RT)
(WITH EDGELINE BREAKS AT CROSSWALKS)

TEMPORARY 4 INCH WHITE LINE, PAINT
STA. 87+25 - STA. 92+50 (SOLID LT & RT)
(WITH EDGELINE BREAKS AT CROSSWALKS)

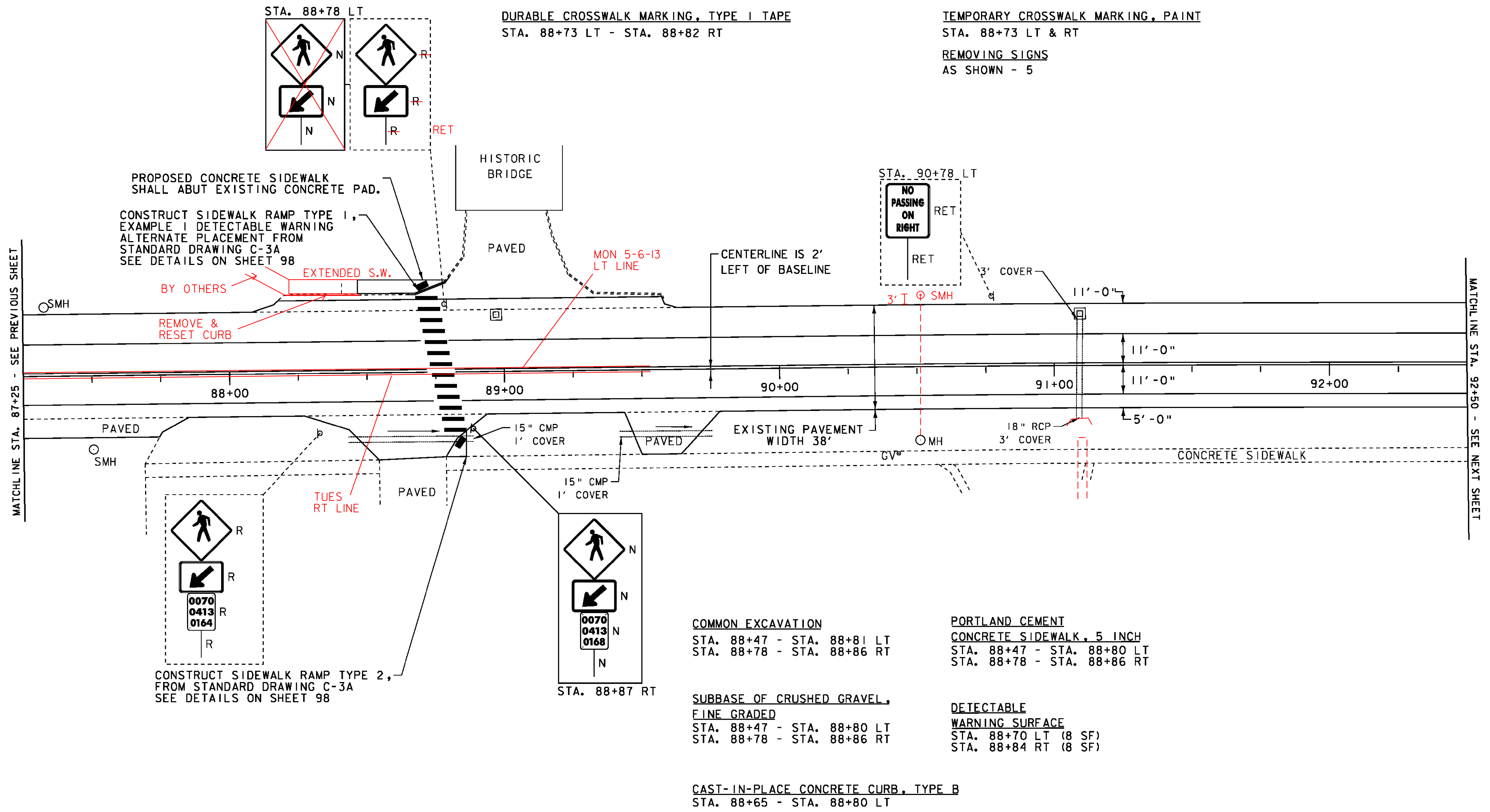
DURABLE 4 INCH YELLOW LINE, TYPE I TAPE
STA. 87+25 - STA. 92+50 (CENTERLINE LT)
(WITH CENTERLINE BREAKS AT CROSSWALKS)

TEMPORARY 4 INCH YELLOW LINE, PAINT
STA. 87+25 - STA. 92+50 (CENTERLINE LT)
(WITH CENTERLINE BREAKS AT CROSSWALKS)

DURABLE CROSSWALK MARKING, TYPE I TAPE
STA. 88+73 LT - STA. 88+82 RT

TEMPORARY CROSSWALK MARKING, PAINT
STA. 88+73 LT & RT

REMOVING SIGNS
AS SHOWN - 5



PROPOSED CONCRETE SIDEWALK
SHALL ABUT EXISTING CONCRETE PAD.
CONSTRUCT SIDEWALK RAMP TYPE 1,
EXAMPLE 1 DETECTABLE WARNING
ALTERNATE PLACEMENT FROM
STANDARD DRAWING C-3A
SEE DETAILS ON SHEET 98

CONSTRUCT SIDEWALK RAMP TYPE 2,
FROM STANDARD DRAWING C-3A
SEE DETAILS ON SHEET 98

COMMON EXCAVATION
STA. 88+47 - STA. 88+81 LT
STA. 88+78 - STA. 88+86 RT

PORTLAND CEMENT
CONCRETE SIDEWALK, 5 INCH
STA. 88+47 - STA. 88+80 LT
STA. 88+78 - STA. 88+86 RT

SUBBASE OF CRUSHED GRAVEL,
FINE GRADED
STA. 88+47 - STA. 88+80 LT
STA. 88+78 - STA. 88+86 RT

DETECTABLE
WARNING SURFACE
STA. 88+70 LT (8 SF)
STA. 88+84 RT (8 SF)

CAST-IN-PLACE CONCRETE CURB, TYPE B
STA. 88+65 - STA. 88+80 LT

- LEGEND**
- SIGN
 - HYDRANT
 - MANHOLE
 - VALVE
 - GAS PIPELINE MARKER
 - CATCH BASIN / DROP INLET
 - CURB INLET
 - TRAFFIC CONTROL BOX
 - PARKING METER
 - UTILITY POLE

- LIGHT POLE
 - EX. DETECTABLE WARNINGS
 - JUNCTION BOX
 - PED BUTTON
 - ELECTRICAL BOX
 - SIGNAL
 - PEDESTAL POST
 - STRAIN POLE
 - CAMERA
 - VDZ VIDEO DETECTION ZONE
- SIGN LEGEND**
- R = REMOVE
 - R&S = REMOVE AND SALVAGE
 - RET = RETAIN
 - S = SALVAGE
 - N = NEW
 - B-B = BACK TO BACK

NOT TO SCALE

**PROJECT
LAYOUT
SHEET 16**

PROJECT NAME: CHARLOTTE-SOUTH BURLINGTON
PROJECT NUMBER: NH 2907(I)

FILE NAME: p10B206.dgn
PROJECT LEADER: CDL
DESIGNED BY: BMB
PLOT FILE: p10B206_32.I

PLOT DATE: 4/19/12
DRAWN BY: BMB
CHECKED BY: EPD
SHEET 32 OF 107