

DURABLE 4 INCH WHITE LINE, TYPE I TAPE
 STA. 10+50 - STA. 25+25 (SOLID LT & RT)
 (WITH EDGELINE BREAKS AT TOWN ROADS)

DURABLE 4 INCH YELLOW LINE, TYPE I TAPE
 STA. 10+50 - STA. 25+25 (SOLID LT & RT)
 (WITH CENTERLINE BREAKS AT TOWN ROADS)

TEMPORARY 4 INCH WHITE LINE, PAINT
 STA. 10+50 - STA. 25+25 (SOLID LT & RT)
 (WITH EDGELINE BREAKS AT TOWN ROADS)

TEMPORARY 4 INCH YELLOW LINE, PAINT
 STA. 10+50 - STA. 25+25 (SOLID LT & RT)
 (WITH CENTERLINE BREAKS AT TOWN ROADS)

STA. 21+73 LT (CENTERLINE TH #85)

TOWN HIGHWAY TRAVEL LANES SHALL NOT EXCEED A 12' WIDTH BEYOND THE PROPOSED RADIUS POINT.

DURABLE LETTER OR SYMBOL, TYPE I TAPE
 STA. 21+62 LT "STOP"

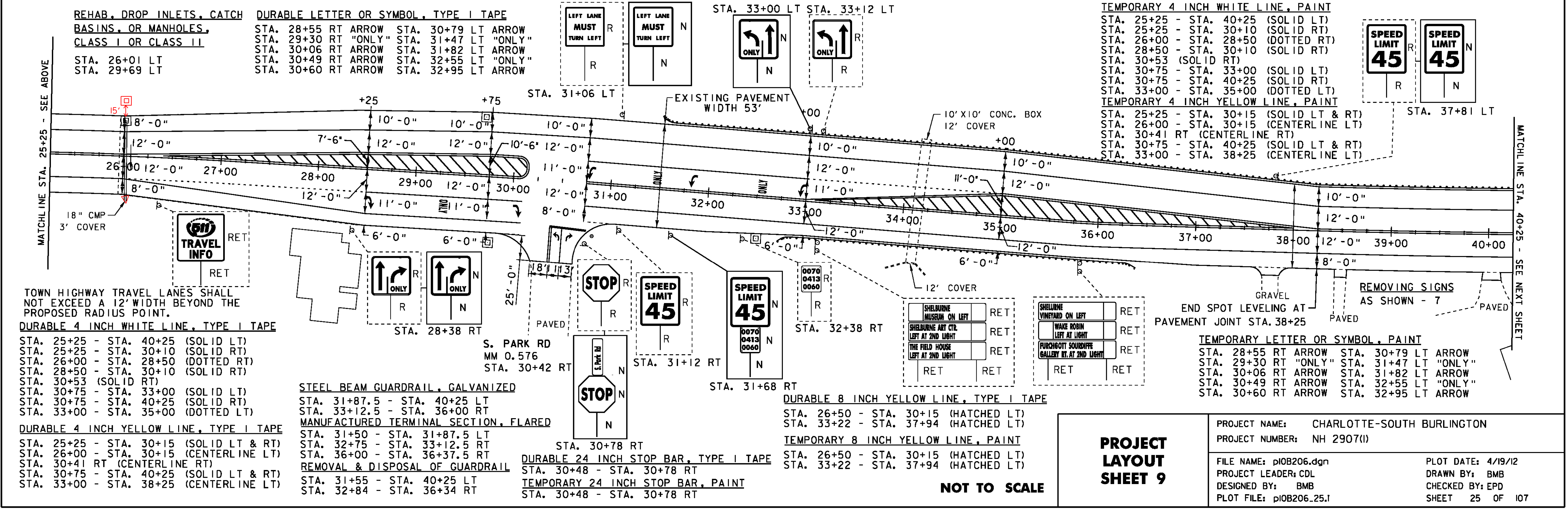
TEMPORARY LETTER OR SYMBOL, PAINT
 STA. 21+62 LT "STOP"

DURABLE 24 INCH STOP BAR, TYPE I TAPE
 STA. 21+46 - STA. 21+73 LT

TEMPORARY 24 INCH STOP BAR, PAINT
 STA. 21+46 - STA. 21+73 LT

REHAB. DROP INLETS, CATCH BASINS, OR MANHOLES, CLASS I OR CLASS II
 STA. 21+11 LT

REMOVING SIGNS AS SHOWN - 9



REHAB. DROP INLETS, CATCH BASINS, OR MANHOLES, CLASS I OR CLASS II
 STA. 26+01 LT
 STA. 29+69 LT

DURABLE LETTER OR SYMBOL, TYPE I TAPE
 STA. 28+55 RT ARROW STA. 30+79 LT ARROW
 STA. 29+30 RT "ONLY" STA. 31+47 LT "ONLY"
 STA. 30+06 RT ARROW STA. 31+82 LT ARROW
 STA. 30+49 RT ARROW STA. 32+55 LT "ONLY"
 STA. 30+60 RT ARROW STA. 32+95 LT ARROW

TEMPORARY 4 INCH WHITE LINE, PAINT
 STA. 25+25 - STA. 40+25 (SOLID LT)
 STA. 25+25 - STA. 30+10 (SOLID RT)
 STA. 26+00 - STA. 28+50 (DOTTED RT)
 STA. 28+50 - STA. 30+10 (SOLID RT)
 STA. 30+53 (SOLID RT)
 STA. 30+75 - STA. 33+00 (SOLID LT)
 STA. 30+75 - STA. 40+25 (SOLID RT)
 STA. 33+00 - STA. 35+00 (DOTTED LT)
TEMPORARY 4 INCH YELLOW LINE, PAINT
 STA. 25+25 - STA. 30+15 (SOLID LT & RT)
 STA. 26+00 - STA. 30+15 (CENTERLINE LT)
 STA. 30+41 RT (CENTERLINE RT)
 STA. 30+75 - STA. 40+25 (SOLID LT & RT)
 STA. 33+00 - STA. 38+25 (CENTERLINE LT)

TOWN HIGHWAY TRAVEL LANES SHALL NOT EXCEED A 12' WIDTH BEYOND THE PROPOSED RADIUS POINT.

DURABLE 4 INCH WHITE LINE, TYPE I TAPE
 STA. 25+25 - STA. 40+25 (SOLID LT)
 STA. 25+25 - STA. 30+10 (SOLID RT)
 STA. 26+00 - STA. 28+50 (DOTTED RT)
 STA. 28+50 - STA. 30+10 (SOLID RT)
 STA. 30+53 (SOLID RT)
 STA. 30+75 - STA. 33+00 (SOLID LT)
 STA. 30+75 - STA. 40+25 (SOLID RT)
 STA. 33+00 - STA. 35+00 (DOTTED LT)

DURABLE 4 INCH YELLOW LINE, TYPE I TAPE
 STA. 25+25 - STA. 30+15 (SOLID LT & RT)
 STA. 26+00 - STA. 30+15 (CENTERLINE LT)
 STA. 30+41 RT (CENTERLINE RT)
 STA. 30+75 - STA. 40+25 (SOLID LT & RT)
 STA. 33+00 - STA. 38+25 (CENTERLINE LT)

STEEL BEAM GUARDRAIL, GALVANIZED
 STA. 31+87.5 - STA. 40+25 LT
 STA. 33+12.5 - STA. 36+00 RT
MANUFACTURED TERMINAL SECTION, FLARED
 STA. 31+50 - STA. 31+87.5 LT
 STA. 32+75 - STA. 33+12.5 RT
 STA. 36+00 - STA. 36+37.5 RT

REMOVAL & DISPOSAL OF GUARDRAIL
 STA. 31+55 - STA. 40+25 LT
 STA. 32+84 - STA. 36+34 RT

DURABLE 24 INCH STOP BAR, TYPE I TAPE
 STA. 30+48 - STA. 30+78 RT

TEMPORARY 24 INCH STOP BAR, PAINT
 STA. 30+48 - STA. 30+78 RT

DURABLE 8 INCH YELLOW LINE, TYPE I TAPE
 STA. 26+50 - STA. 30+15 (HATCHED LT)
 STA. 33+22 - STA. 37+94 (HATCHED LT)

TEMPORARY 8 INCH YELLOW LINE, PAINT
 STA. 26+50 - STA. 30+15 (HATCHED LT)
 STA. 33+22 - STA. 37+94 (HATCHED LT)

PROJECT LAYOUT SHEET 9

NOT TO SCALE

PROJECT NAME: CHARLOTTE-SOUTH BURLINGTON
 PROJECT NUMBER: NH 2907(1)

FILE NAME: p10B206.dgn
 PROJECT LEADER: CDL
 DESIGNED BY: BMB
 PLOT FILE: p10B206_25.I

PLOT DATE: 4/19/12
 DRAWN BY: BMB
 CHECKED BY: EPD
 SHEET 25 OF 107