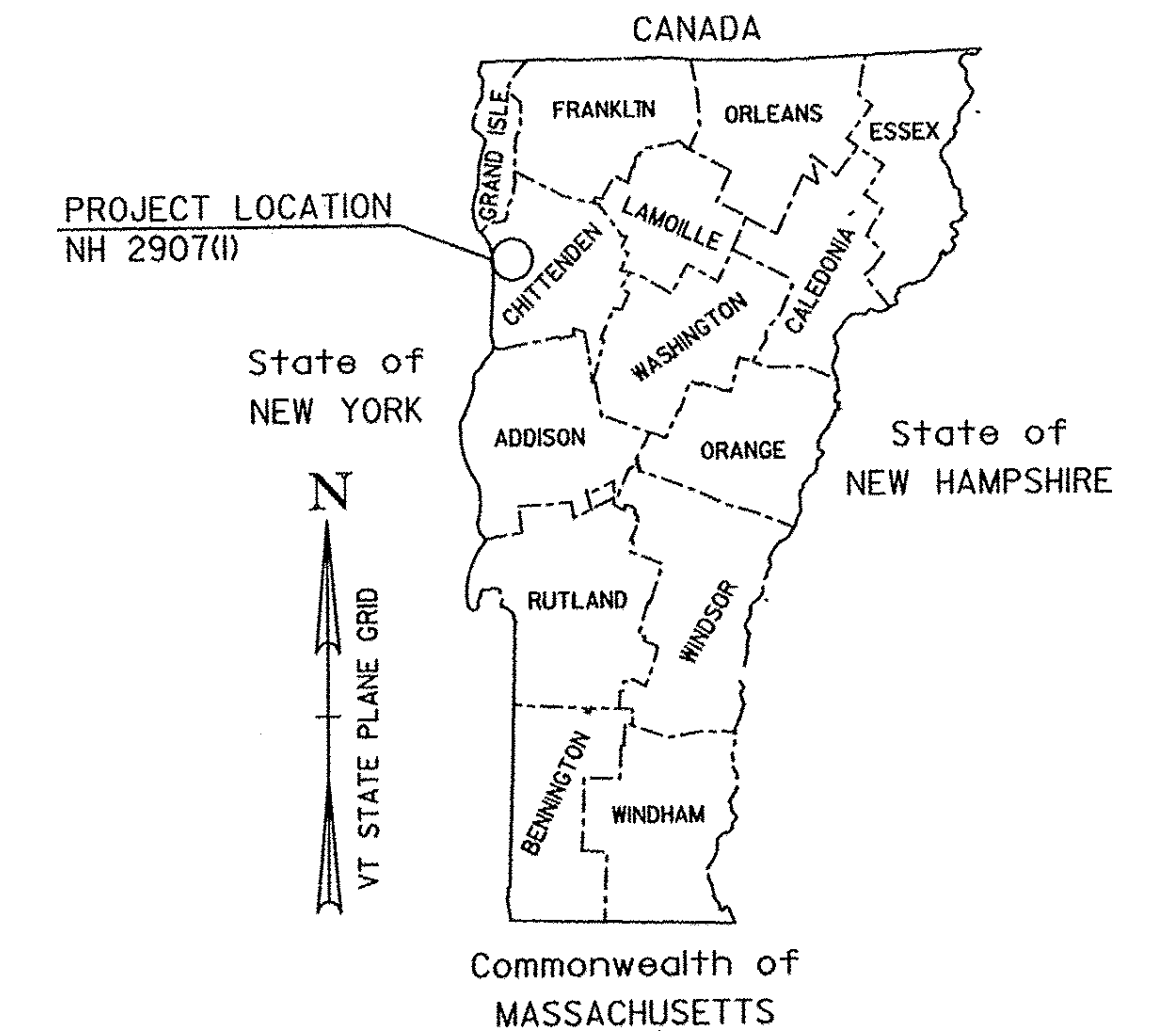


INDEX OF SHEETS
SEE SHEET 2

STATE OF VERMONT AGENCY OF TRANSPORTATION



PROPOSED IMPROVEMENT TOWNS OF CHARLOTTE AND SHELBURNE, AND CITY OF SOUTH BURLINGTON COUNTY OF CHITTENDEN U.S. ROUTE 7 PRINCIPAL ARTERIAL - NHS



TRAFFIC DATA

CHARLOTTE-SHELBURNE	AADT		DHV		TOTAL ESALS (2012-2022)	TOTAL ESALS (2012-2032)	LANES
	2012	2022	2012	2022			
BEGIN PROJECT TO CHURCH HILL RD (TH#2) / FERRY RD (TH#3)	11,300	12,000	1200	1200	4,147,000	9,006,000	2
CHURCH HILL RD (TH#2) FERRY RD (TH#3) TO CHURCH HILL RD (TH#7)	11,900	12,600	1200	1300	4,798,000	11,165,000	3
CHURCH HILL RD (TH#7) TO BOSTWICK RD (TH#3) / MARSETT RD (TH#II)	13,100	13,900	1400	1400	4,822,000	11,365,000	2
BOSTWICK RD (TH#3) / MARSETT RD (TH#II) TO HARBOR RD (TH#I) / FALLS RD (TH#2)	14,300	15,200	1300	1400	4,482,000	10,578,000	2
HARBOR RD (TH#I) / FALLS RD (TH#2) TO STOP PROJECT	18,000	19,000	1600	1700	5,661,000	12,967,000	2
RESUME PROJECT TO BALDWIN AVENUE (TH#69)	31,200	32,100	3200	3300	6,551,000	15,309,000	4
BALDWIN AVENUE (TH#69) TO QUEEN CITY PARKWAY RAMP C (TH#II)	32,600	33,600	3400	3500	6,048,000	14,184,000	4
QUEEN CITY PARKWAY RAMP C (TH#II) TO QUEEN CITY PARKWAY RAMP F (TH#II)	34,000	35,000	3500	3600	5,559,000	13,069,000	4
QUEEN CITY PARKWAY RAMP F (TH#II) TO END PROJECT	39,100	39,900	4100	4100	6,363,000	14,833,000	4

RECORD PLANS

CONTRACTOR: F.W. WHITCOMB CONSTRUCTION CORP. - WALPOLE, NH

RESIDENT ENGINEER: DALE NORTON

CONSTRUCTION BEGAN: AUGUST 8, 2012

CONSTRUCTION COMPLETE: APRIL 6, 2014

RECORD PLANS BY: DALE NORTON & CRAIG PIERCE

I HEREBY CERTIFY THAT ALL THE CONSTRUCTION REQUIRED BY THIS SET OF DRAWINGS HAS BEEN ACCOMPLISHED AS INDICATED HEREIN.

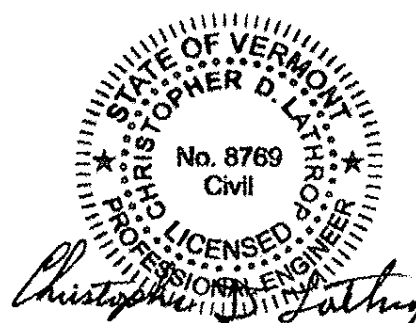
BY: *[Signature]* RESIDENT ENGINEER
DATE: 7-6-15 EXECUTIVE
DALE NORTON

NOTE: Any further information concerning final quantities, amounts or other details relative to this project may be found at Central Files in the electronic archives.

PROJECT LOCATION: BEGINNING IN THE TOWN OF CHARLOTTE APPROXIMATELY 3100 FEET SOUTH OF THE INTERSECTION OF FERRY ROAD AND CHURCH HILL ROAD AT STA. 150+85.09 (MM 2.857) AND EXTENDING NORTHERLY FOR A DISTANCE OF 33290.24 FT (6.305 MILES) TO A STOPPING POINT IN THE TOWN OF SHELBURNE NEAR THE INTERSECTION OF WEBSTER ROAD AT STA. 137+81.00 (MM 2.610) AND RESUMING WORK IN THE CITY OF SOUTH BURLINGTON NEAR THE INTERSECTION OF IMPERIAL DRIVE AT STA. 51+61.58 (MM 0.978) AND EXTENDING NORTHERLY A DISTANCE OF 3917.97 FT (0.742 MILES) TO AN ENDING POINT NEAR THE INTERSECTION OF QUEEN CITY PARK ROAD AT STA. 90+79.55 (MM 1.720).

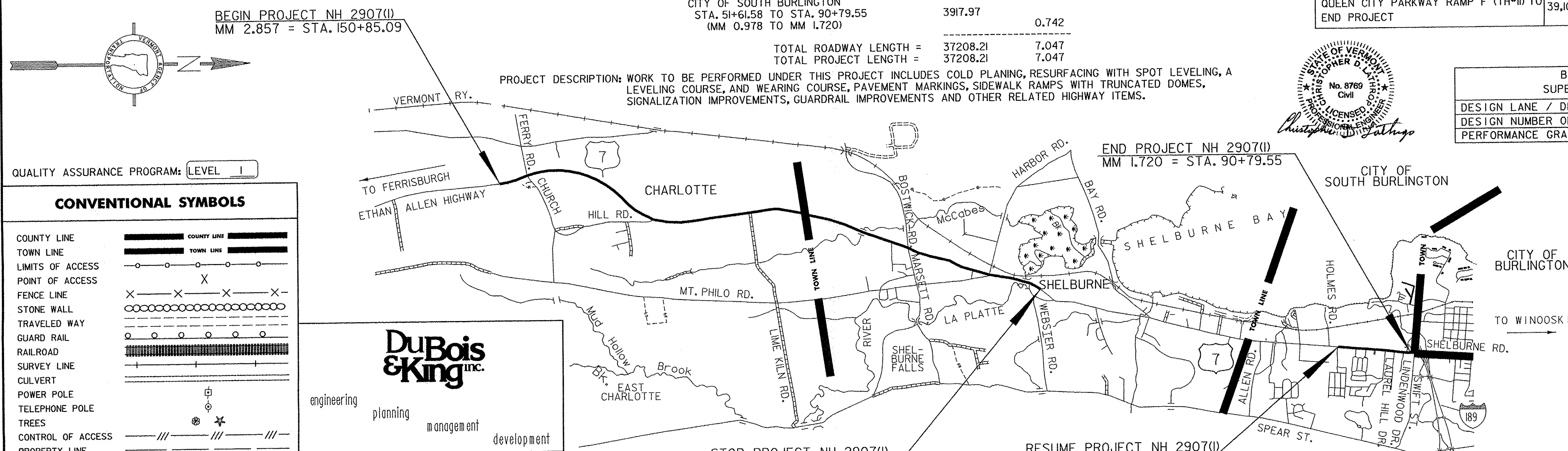
STATION TO STATION DATA	LENGTH (FEET)	(MILES)
TOWN OF CHARLOTTE STA. 150+85.09 TO STA. 345+94.33 (MM 2.857 TO MM 6.552)	19509.24	3.695
TOWN OF SHELBURNE STA. 0+00.00 TO STA. 137+81.00 (MM 0.000 TO MM 2.610)	13781.00	2.610
CITY OF SOUTH BURLINGTON STA. 51+61.58 TO STA. 90+79.55 (MM 0.978 TO MM 1.720)	3917.97	0.742
TOTAL ROADWAY LENGTH =	37208.21	7.047
TOTAL PROJECT LENGTH =	37208.21	7.047

PROJECT DESCRIPTION: WORK TO BE PERFORMED UNDER THIS PROJECT INCLUDES COLD PLANING, RESURFACING WITH SPOT LEVELING, A LEVELING COURSE, AND WEARING COURSE, PAVEMENT MARKINGS, SIDEWALK RAMPS WITH TRUNCATED DOMES, SIGNALIZATION IMPROVEMENTS, GUARDRAIL IMPROVEMENTS AND OTHER RELATED HIGHWAY ITEMS.



BITUMINOUS CONCRETE PAVEMENT
SUPERPAVE MIXTURE DESIGN CRITERIA

DESIGN LANE / DESIGN LIFE ESAL	9,572,000
DESIGN NUMBER OF GYRATIONS	80
PERFORMANCE GRADE ASPHALT BINDER	SEE SUBSECTION 490.03 (b)



QUALITY ASSURANCE PROGRAM: LEVEL I

CONVENTIONAL SYMBOLS

COUNTY LINE	
TOWN LINE	
LIMITS OF ACCESS	
POINT OF ACCESS	
FENCE LINE	
STONE WALL	
TRAVELED WAY	
GUARD RAIL	
RAILROAD	
SURVEY LINE	
CULVERT	
POWER POLE	
TELEPHONE POLE	
TREES	
CONTROL OF ACCESS	
PROPERTY LINE	
R.O.W. TAKING LINE	
SLOPE RIGHTS	
TOP OF CUT	
TOE OF SLOPE	

DuBois & King inc.

engineering planning management development

DATUM
VERTICAL: N/A
HORIZONTAL: N/A

THESE PLANS ARE SUBJECT TO SUCH ENGINEERING CHANGES AS MAY BE REQUIRED BY THE FEDERAL HIGHWAY ADMINISTRATION OR THE DIRECTOR OF PROGRAM DEVELOPMENT.

CONSTRUCTION IS TO BE CARRIED ON IN ACCORDANCE WITH THESE PLANS AND THE STANDARD SPECIFICATIONS FOR CONSTRUCTION DATED 2011, AS APPROVED BY THE FEDERAL HIGHWAY ADMINISTRATION ON JULY 20, 2011 FOR USE ON THIS PROJECT, INCLUDING ALL SUBSEQUENT REVISIONS AND SUCH REVISED SPECIFICATIONS AND SPECIAL PROVISIONS AS ARE INCORPORATED IN THESE PLANS.

DIRECTOR OF PROGRAM DEVELOPMENT

APPROVED: *[Signature]* DATE: 4/23/12

PROJECT MANAGER: MIKE FOWLER, P.E.

PROJECT NAME: CHARLOTTE - SOUTH BURLINGTON

PROJECT NUMBER: NH 2907 (I)

SHEET 1 OF 107 SHEETS

NOT TO SCALE

PLOTTED: 4/18/2012