

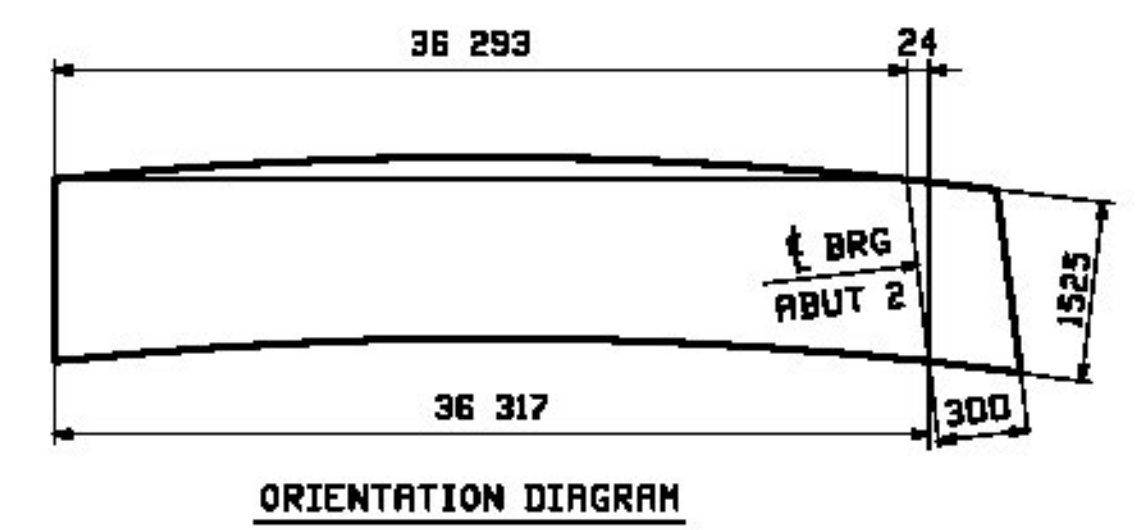
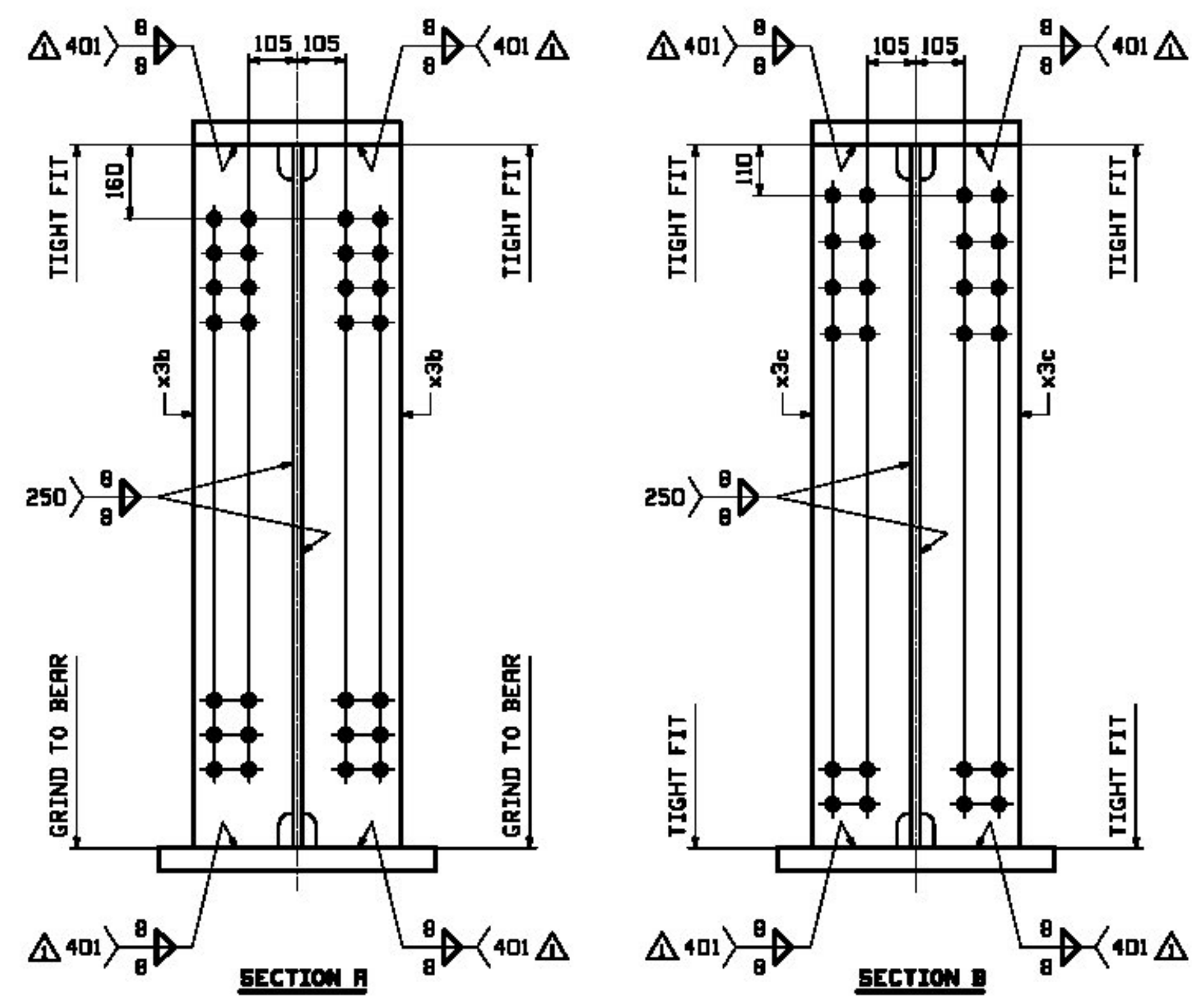
BILL OF MATERIAL					JOB NO.	DRAWING NO.	REV.
LINE	QTY	UNIT	MATERIAL	LENGTH	REMARKS	MT	PROCUREMENT NOTES
1	1	EA	GIRDER				
2	1	EA	PL 20x1525	24			
3	1	EA	PL 20x1525	12			
4	1	EA	PL 50x450	9			
5	1	EA	PL 30x450	26			
6	1	EA	PL 50x600	9			
7	1	EA	PL 35x600	26			
8	2	EA	PL 25x215	1			
9	10	EA	PL 13x215	1			

ONE - GIRDER - 18G3E

FOR FIELD SPLICE DETAILS SEE DRAWING X1.
 FOR GIRDER STANDARD DETAILS SEE DRAWING X3 & X4.
 FOR CAMBER & FLANGE DIAGRAMS SEE DRAWING C4.
 FOR GENERAL NOTES SEE DRAWING GNI.
 T2 DENOTES MATERIAL SUBJECT TO CHARPY V-NOTCH TESTING.

NOTE A:
 BEARING AREA TO RECEIVE
 FIELD WELDED SOLE PLATE.
 NO PRINT BOTTOM & EDGES
 OF BOTTOM FLANGE.

Agency of Transportation
 Approved _____
 Furnish as Corrected _____
 Douglas E. Borczon, P.E. Date
 Structures Project Manager



REV.	DATE	REMARKS	DWN	CHK	APVL	SHOP
12/18		APPROVAL COMMENTS	EEO	PCP		
0						

MATERIAL: M270M-345W UN SURFACE PREP. & PRINT: SEE GNI HOLES: 5/16" SHOP BOLTS: AS NOTED

DESCRIPTION: GIRDER DETAIL - 18G3E

CASCO BAY STEEL STRUCTURES, INC.
 1 WALLACE AVE. PHONE (207) 780-6722
 SOUTH PORTLAND, ME 04106 FAX: (207) 780-6726

STRUCTURE: VT 100 OVER LAHOILLE RIVER MORRISTOWN, VT LAHOILLE COUNTY STP F 029-1 (2) C/1

LOCATION: MORRISTOWN, VT JOB NO. DWG NO. 521 18

CUSTOMER: MINTERSET, INC. REV.