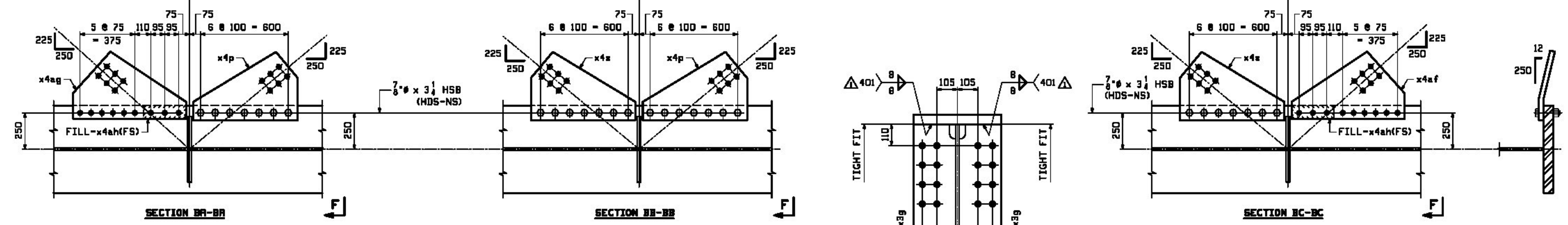
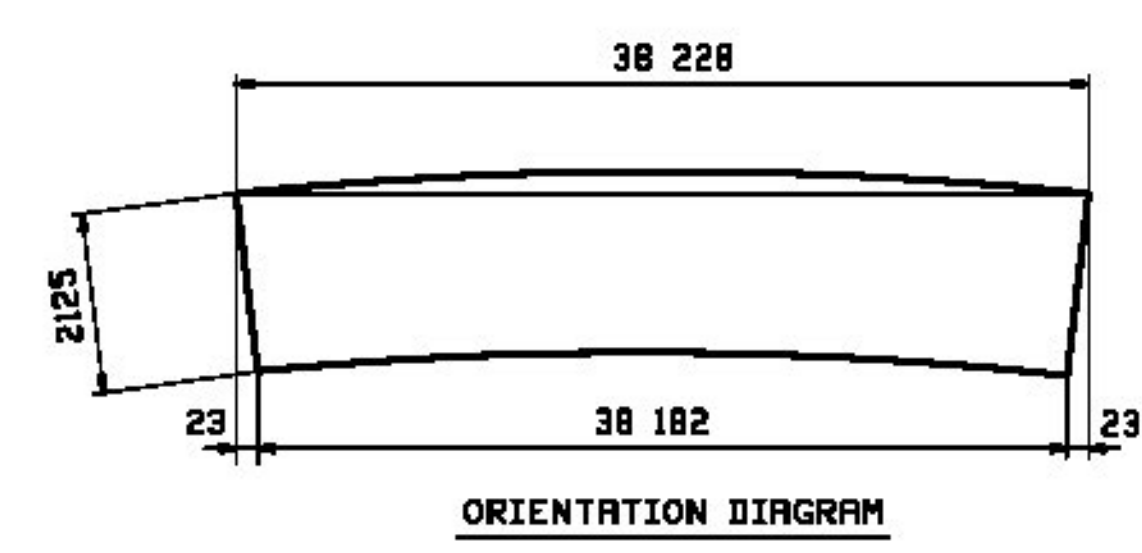


BILL OF MATERIAL				JOB NO.	DRAWING NO.	REV.
LINE	QTY	UNIT	MATERIAL	REMARKS	MT	PROCUREMENT NOTES
1	1	EA	GIRDER		14000	
1	1	EA	PL 20x2125		848	
1	1	EA	PL 20x2125		280	
2	1	EA	PL 30x500		228	
2	1	EA	PL 30x500		000	
1	1	EA	PL 35x600		228	
1	1	EA	PL 35x600		954	
3	14	EA	PL 13x240		125	
6	6	EA	PL 13x715	(BENT)	470	
6	6	EA	PL 13x715	(BENT)	470	
6	1	EA	PL 13x775	(BENT)	460	
6	1	EA	PL 13x775	(BENT)	460	
6	2	EA	PL 35x90	FILL	290	
8	1	EA	7 # HSB	(RCT)	31	
8	1	EA	7 # HSB	(RCT)	31	
8	1	EA	7 # HSB	(RCT)	31	



ONE - GIRDER - 12G2C

FOR FIELD SPLICE DETAILS SEE DRAWING X1.
 FOR GIRDER STANDARD DETAILS SEE DRAWING X3 & X4.
 FOR CAMBER & FLANGE DIAGRAMS SEE DRAWING C3.
 FOR GENERAL NOTES SEE DRAWING GNI.
 T2 DENOTES MATERIAL SUBJECT TO CHARPY V-NOTCH TESTING.



Agency of Transportation
 Approved
 Furnish as Corrected
 Douglas E. Bonnen, P.E.
 Structures Project Manager

Rejected
 Revise & Resubmit
 Date

REV.	DATE	REMARKS	DWN	CHK	APVL	SHOP
12/18		APPROVAL COMMENTS	EEO	PCP		
0						

MATERIAL: M270M-345W UN SURFACE PREP. & PRINT: SEE GNI. HOLES: 15 # 16 # SHOP BOLTS: AS NOTED

DESCRIPTION: GIRDER DETAIL - 12G2C

CASCO BAY STEEL STRUCTURES, INC.
 1 WALLACE AVE. PHONE (207) 780-6722
 SOUTH PORTLAND, ME 04106 FAX. (207) 780-6726

STRUCTURE: VT 100 OVER LAHOILLE RIVER MORRISTOWN, VT LAHOILLE COUNTY STP F 028-1 (2) C/1

LOCATION: MORRISTOWN, VT JOB NO. 521

PROJ NO. STP F 028-1(2)C/1

CUSTOMER: MINTERSET, INC.

DRAWN: CRK DATE: 08/27
 CHKD: PCP DATE: 9/17/12

DWG NO. 12 REV. 12