

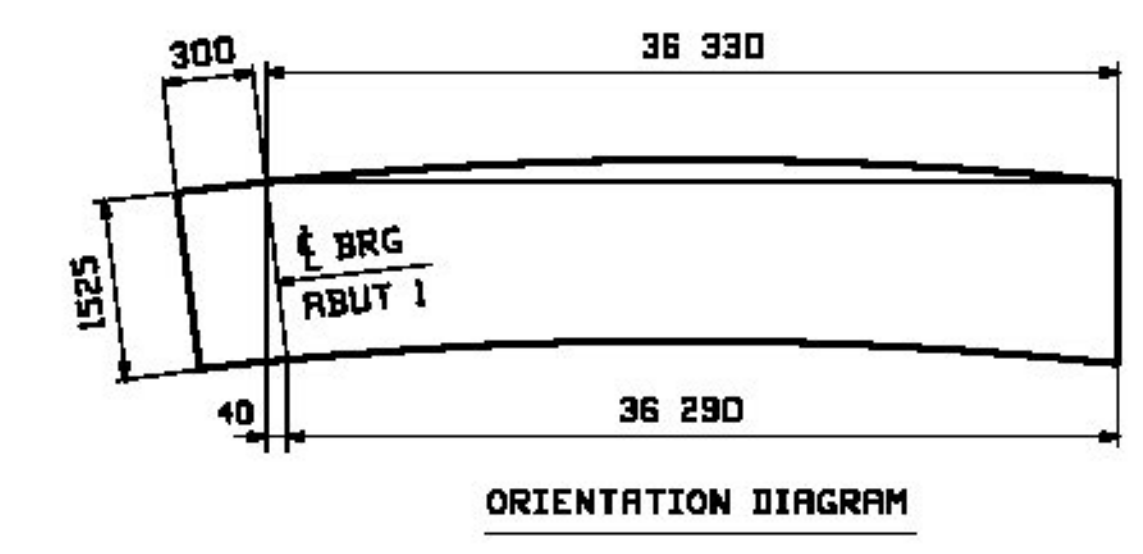
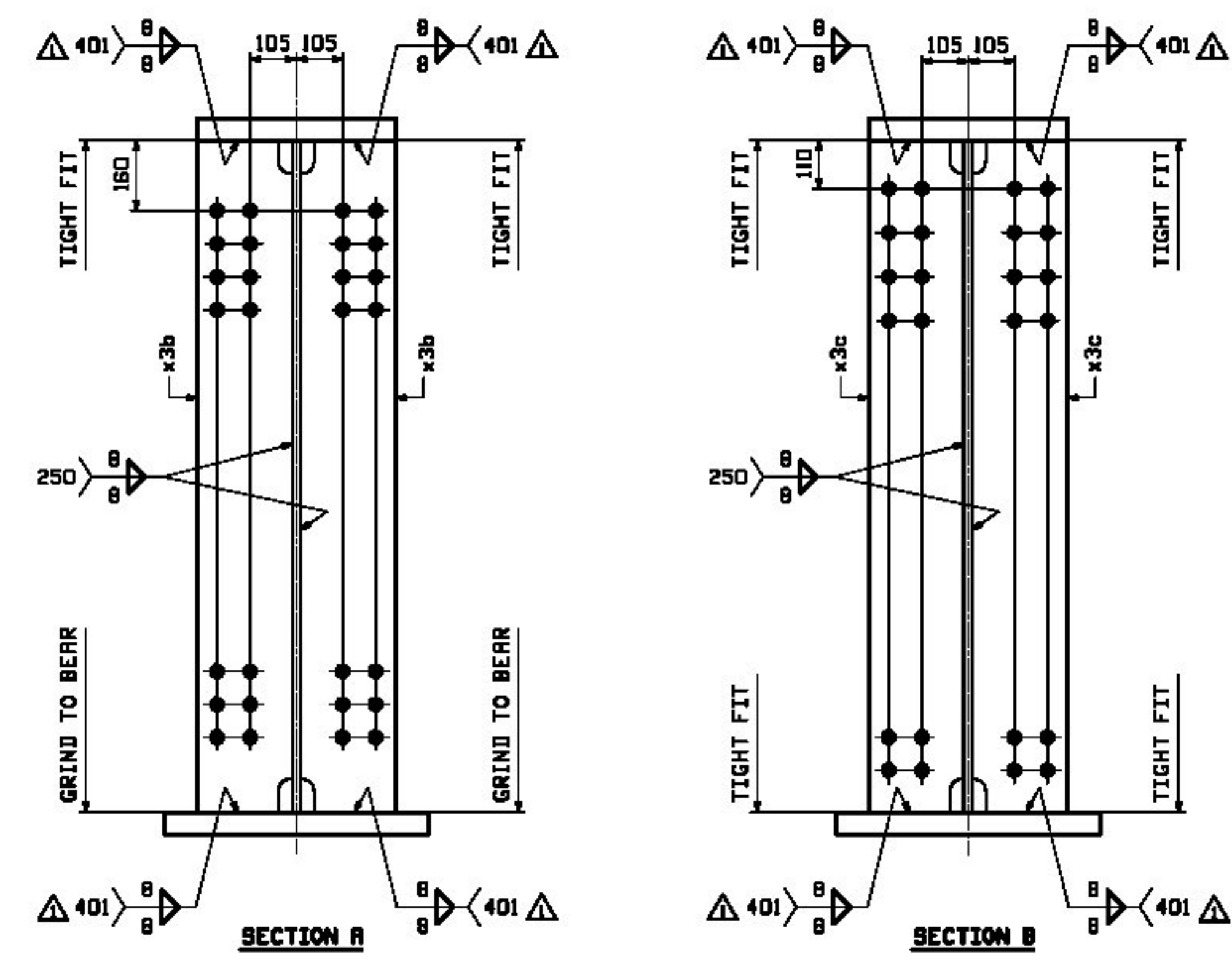
BILL OF MATERIAL				JOB NO.	DRAWING NO.	REV.
QTY	UNIT	MATERIAL	LENGTH	REMARKS	MT	PROCUREMENT NOTES
1	EA	GIRDER				
2	C	PL 20x1525	12 402			
2	H	PL 20x1525	24 232			
2	Q	PL 30x450	26 850			
2	J	PL 50x450	9 780			
1	N	PL 35x600	26 810			
1	L	PL 50x600	9 780			
3	T	PL 25x215	1 525			
3	U	PL 13x215	1 525			

Agency of Transportation
 Approved _____ Rejected _____
 Furnishes Corrected _____ Revise & Resubmit _____
 Douglas E. Bousquet, P.E. Date _____
 Structures Project Manager

ONE - GIRDER - 3G3A

NOTE A:
 BEARING AREA TO RECEIVE
 FIELD WELDED SOLE PLATE.
 NO PRINT BOTTOM & EDGES
 OF BOTTOM FLANGE.

FOR FIELD SPlice DETAILS SEE DRAWING X1.
 FOR GIRDER STANDARD DETAILS SEE DRAWING X3 & X4.
 FOR CAMBER & FLANGE DIAGRAMS SEE DRAWING C1.
 FOR GENERAL NOTES SEE DRAWING GNI.
 T2 DENOTES MATERIAL SUBJECT TO CHARPY V-NOTCH TESTING.



12/18	APPROVAL COMMENTS	EEO	PCP	
REV. DATE	REMARKS	DWN	CHK	APVL SHOP
MATERIAL:	SURFACE PREP. & PRINT:	HOLES:	SHOP BOLTS:	
M270M-345W UN	SEE GNI	5/16"	AS NOTED	
DESCRIPTION: GIRDER DETAIL - 3G3A				
CASCO BAY STEEL STRUCTURES, INC.				
1 WALLACE AVE.		PHONE (207) 780-6722		TENOR STRUCTURES
SOUTH PORTLAND, ME 04106		FAX (207) 780-6726		
STRUCTURE:	VT 100 OVER LAHOILLE RIVER	DRAWN:	DATE:	
	MORRISTOWN, VT LAHOILLE COUNTY	CRK	08/25	
	STP F 029-1 (2) C/1	CHKD:	DATE:	
		PCP	9/17/12	
LOCATION:	MORRISTOWN, VT	JOB NO.	DWG NO.	
PROJ NO.	STP F 029-1(2)C/1	521	3	
CUSTOMER:	MINTERSET, INC.			