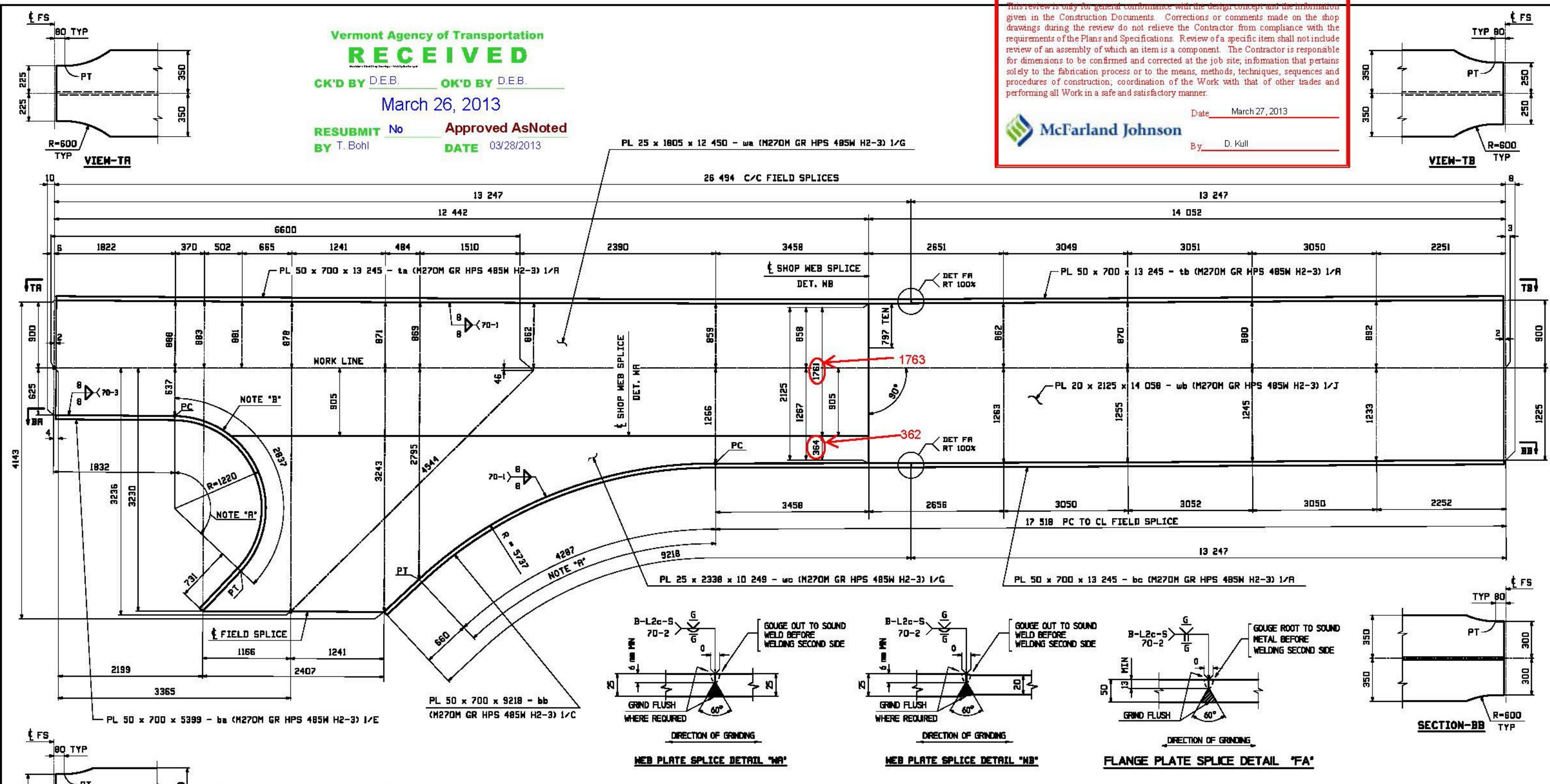


Vermont Agency of Transportation
RECEIVED
 CK'D BY D.E.B. OK'D BY D.E.B.
 March 26, 2013
 RESUBMIT No Approved AsNoted
 BY T. Bohl DATE 03/28/2013

Reviewed X Furnish As Corrected
 Rejected Revise and Resubmit

This review is only for general conformance with the design concept and the information given in the Construction Documents. Corrections or comments made on the shop drawings during the review do not relieve the Contractor from compliance with the requirements of the Plans and Specifications. Review of a specific item shall not include review of an assembly of which an item is a component. The Contractor is responsible for dimensions to be confirmed and corrected at the job site; information that pertains solely to the fabrication process or to the means, methods, techniques, sequences and procedures of construction; coordination of the Work with that of other trades and performing all Work in a safe and satisfactory manner.

McFarland Johnson
 Date: March 27, 2013
 By: D. Kull



NOTE "A"
 CURVED AREA OF FLANGE PLATE TO BE UT TESTED AFTER ROLLING

NOTE "B"
 BEFORE HOT OR COLD BENDING, THE CORNERS OF THE PLATE SHALL BE ROUNDED TO A RADIUS OF 1/4" THROUGHOUT THAT PORTION OF THE PLATE AT WHICH THE BENDING IS TO OCCUR (TYP).

NOTES:
 - FOR GENERAL SHOP NOTES SEE DRAWING GNI
 - H2-3 INDICATES PLATES THAT REQUIRE CHARPY V-NOTCH TEST AT H FREQUENCY FOR ZONE 2
 - ALL MATERIALS ASHTO M270M-GR HPS 485W

WEB CUTTING AND FLANGE BENDING DIAGRAMS FOR GIRDER 7G2B

DESCRIPTION: CAMBER & FLANGE DIAGRAMS	
CASCO BAY STEEL STRUCTURES, INC. 1 WALLACE AVE. PHONE (207) 780-6722 SOUTH PORTLAND, ME 04106 FAX. (207) 780-6726	
STRUCTURE: VT 100 OVER LAHOILLE RIVER MORRISTOWN, VT LAHOILLE COUNTY STP F 028-1 (2) C/1	DRAWN: EEO 3/20/13 DATE: 3/25/13 CHKD: PCP
LOCATION: MORRISTOWN, VT	JOB NO. 521
PROJ NO. STP F 028-1(2)C/1	DWG NO. C6
CUSTOMER: MINTERSET, INC.	REV. <input type="checkbox"/>

REV.	DATE	REMARKS	DMN	CHK	APVL	SHOP
MATERIAL:		SURFACE PREP. & PAINT:		HOLES:		SHOP BOLTS:
				AS NOTED		AS NOTED