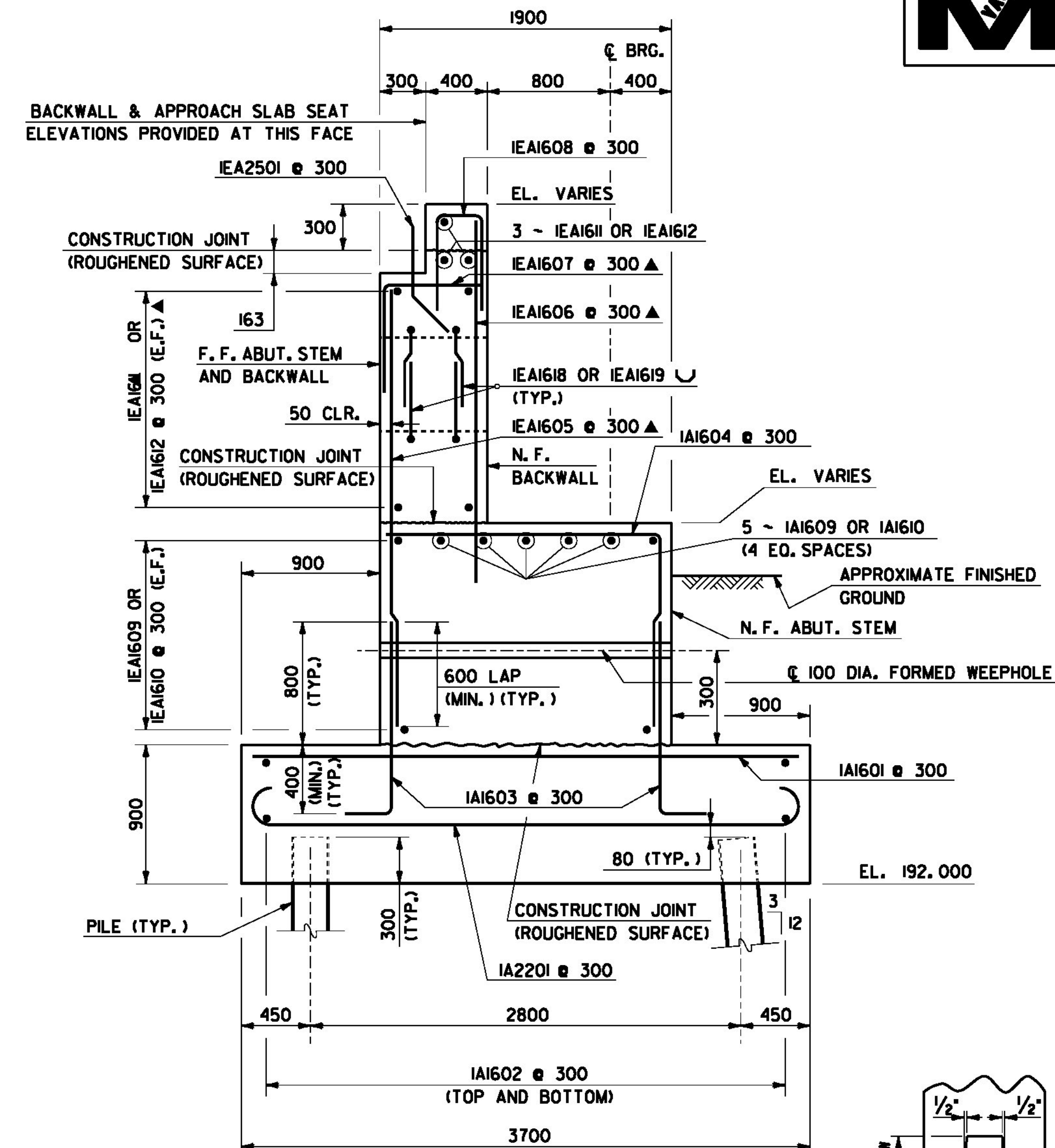
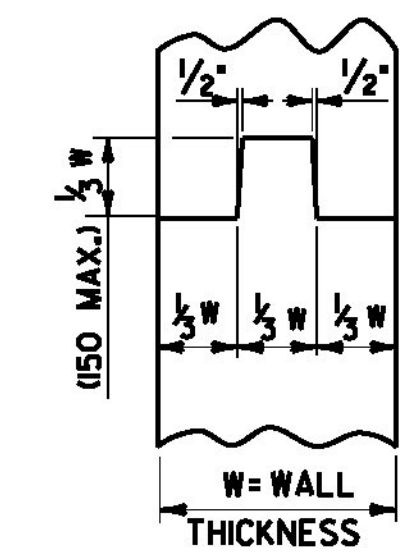


ABUTMENT NO. 1 PLAN
SCALE: 1:50

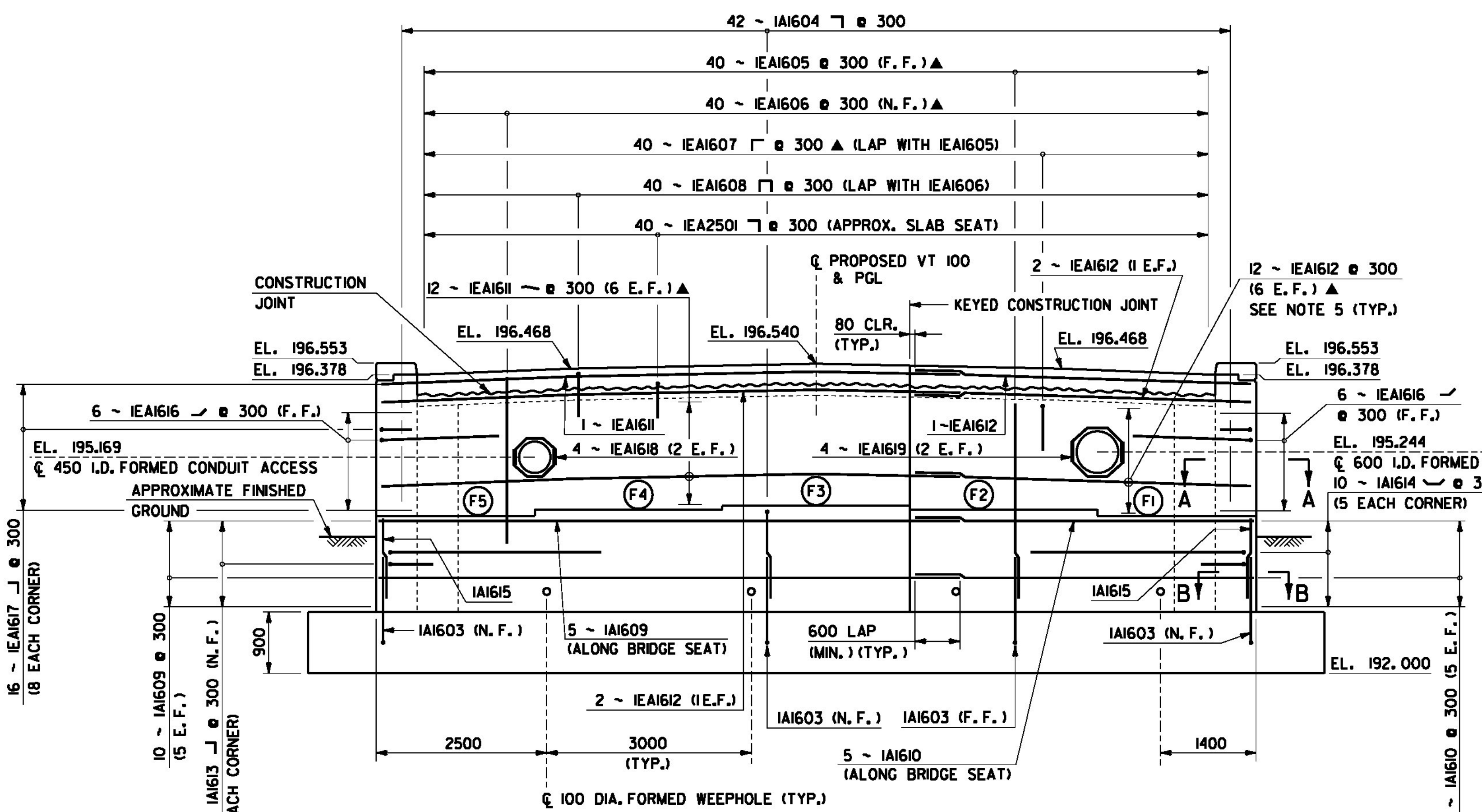


ABUTMENT NO. 1 SECTION
SCALE: 1:25



TOP OF PEDESTAL ELEVATIONS	
FRAME NO.	ELEVATION
F1	194.310
F2	194.403
F3	194.458
F4	194.403
F5	194.310

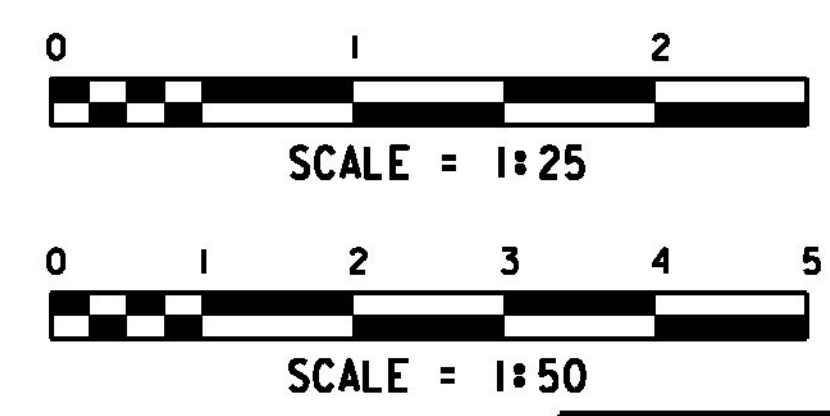
KEYED CONSTRUCTION JOINT DETAIL
NOT TO SCALE



ABUTMENT NO. 1 ELEVATION
SCALE: 1:50
NOTE: PILES NOT SHOWN FOR CLARITY

- LEGEND**
- N.F. = NEAR FACE
 - F.F. = FAR FACE
 - E.F. = EACH FACE
 - I.D. = INSIDE DIAMETER
 - ▲ = CUT TO FIT IN FIELD
 - (F1) = FRAME NUMBER

- NOTES**
1. FOR SECTIONS A-A AND B-B, SEE SHEET 91.
 2. FOR WORKING POINT COORDINATES, SEE SHEET 88.
 3. FIELD DRILL 60 DIA. X 380 MIN DEEP HOLES FOR NO. 38 ANCHOR BOLTS.
 4. FOR BRIDGE RAIL LAYOUT ON WINGWALLS, SEE SHEET 69.
 5. HORIZONTAL BARS SHALL BE SPACED TO FOLLOW GEOMETRY OF THE BRIDGE CROWN.



NOTE: ALL DIMENSIONS IN MILLIMETERS (mm) EXCEPT WHERE NOTED. ALL ELEVATIONS IN METERS (M)

PROJECT NAME:	MORRISTOWN
PROJECT NUMBER:	STP F 029-I(2)C/1
FILE NAME:	z10b194asa.dgn
PROJECT LEADER:	DMB
DESIGNED BY:	S. Della / D. Kull
ABUTMENT NO. 1	
PLOT DATE:	29-MAR-2012
DRAWN BY:	S. Mer'kwan
CHECKED BY:	R. Joy
SHEET	89 OF 123