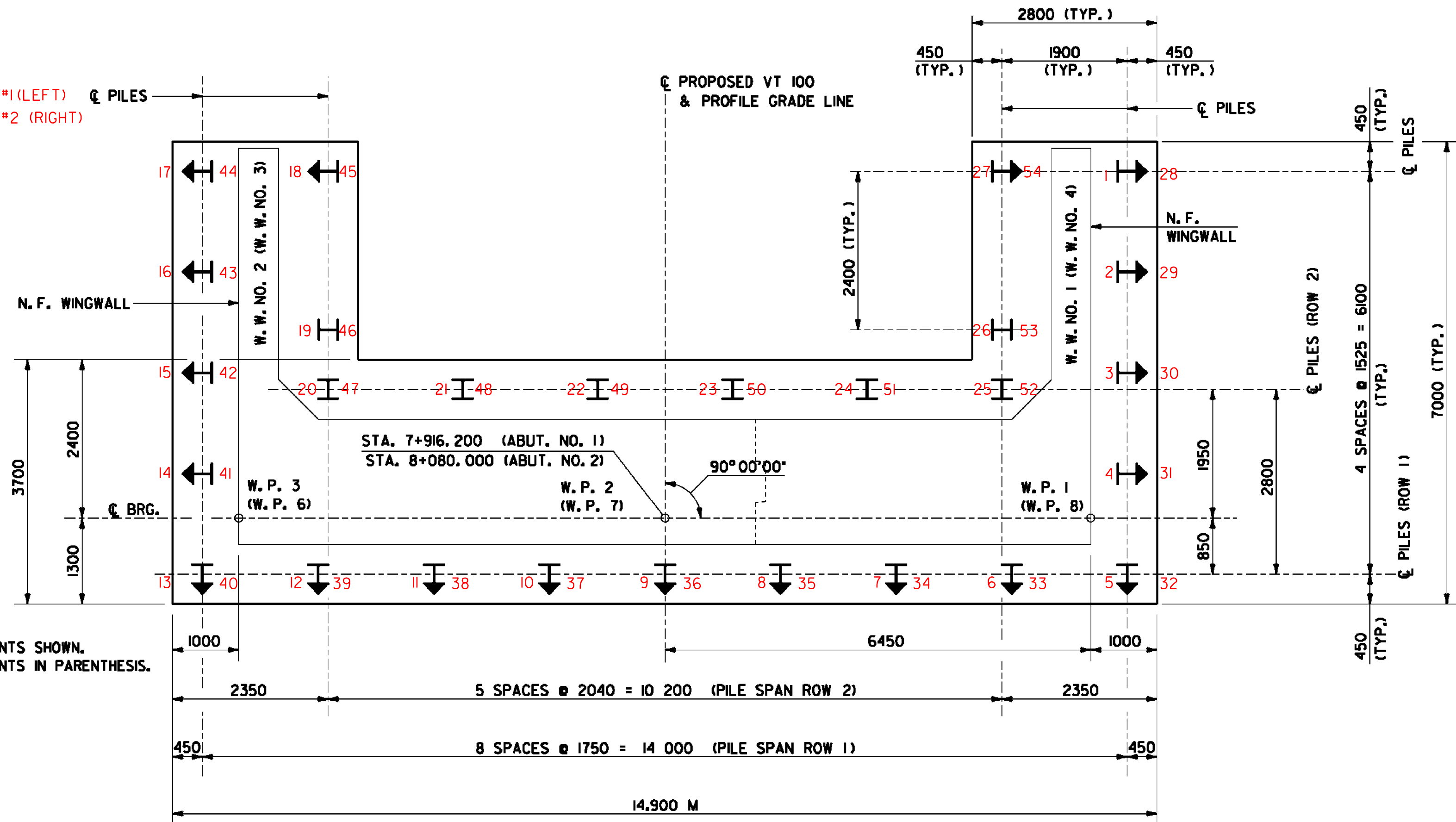
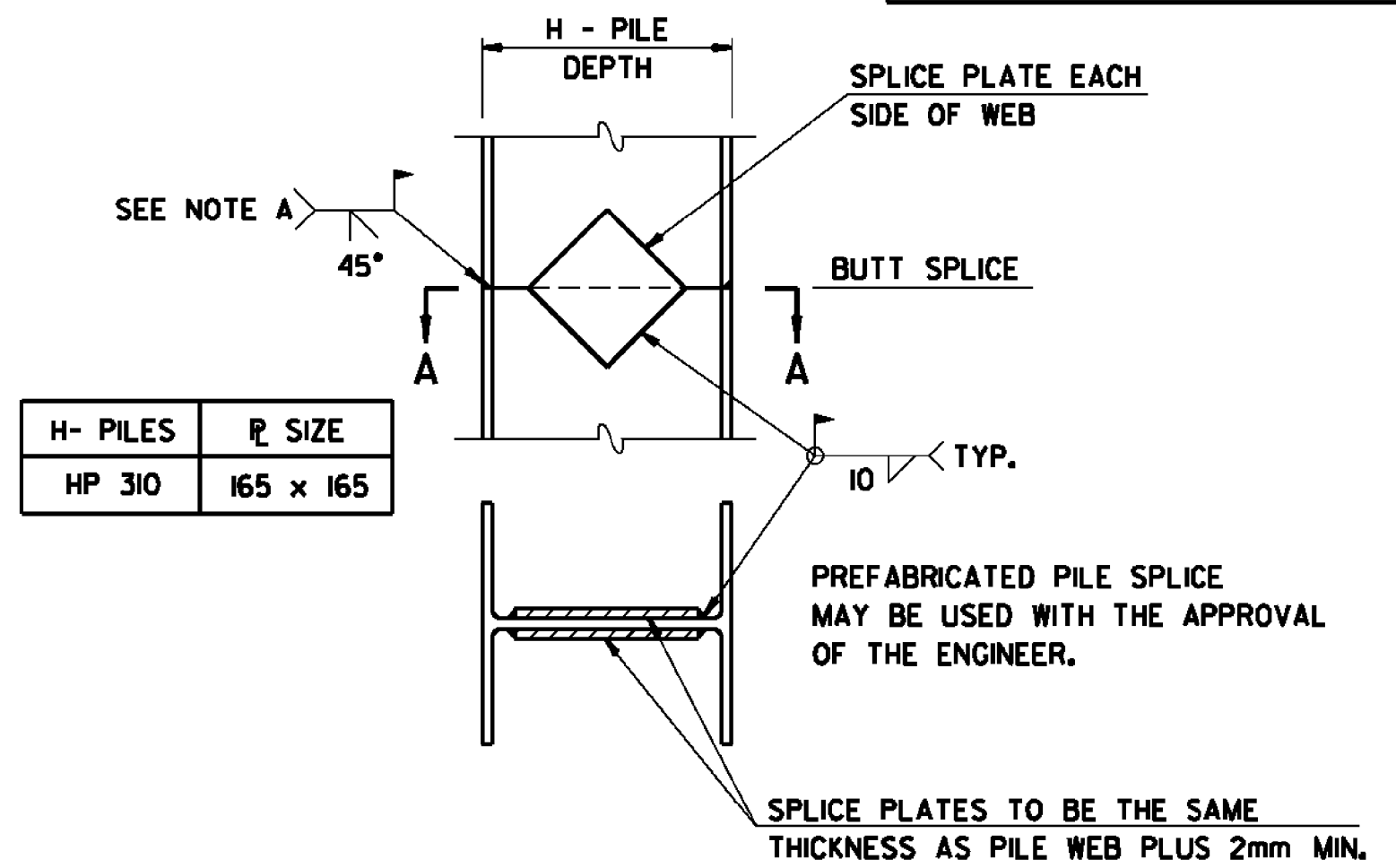


PILE NUMBERS ABUTMENT #1 (LEFT) & PILES
PILE NUMBERS ABUTMENT #2 (RIGHT)



NOTE:
ABUTMENT NO. 1 WORKING POINTS SHOWN.
ABUTMENT NO. 2 WORKING POINTS IN PARENTHESIS.

ABUTMENT FOOTING PILE LAYOUT
SCALE: 1:50
ABUTMENT NO. 1 SHOWN (ABUTMENT NO. 2 SIMILAR)



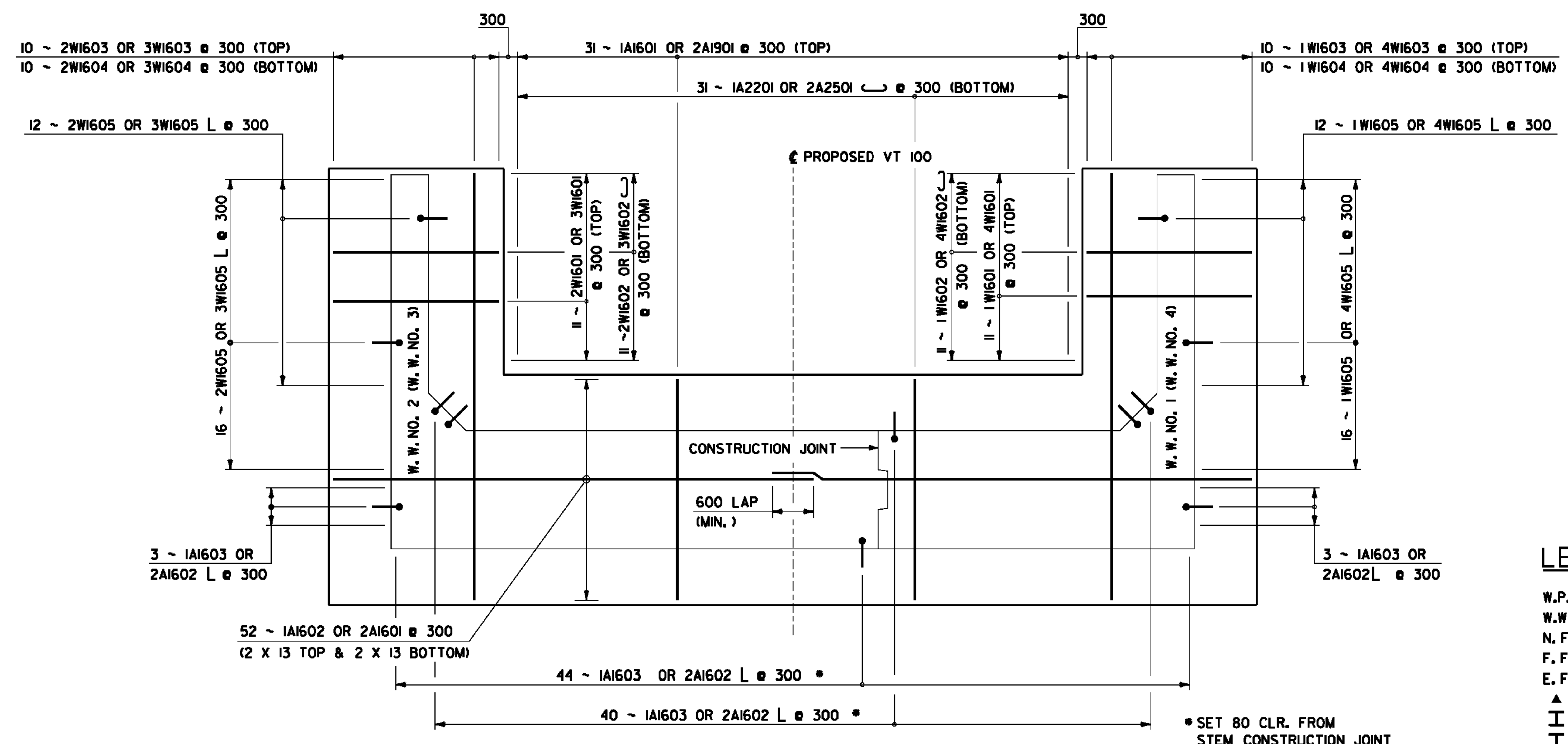
H- PILES	P SIZE
HP 310	165 x 165

SECTION A-A
NOTE A:
FULL PENETRATION FLANGE ONLY (TYP.)

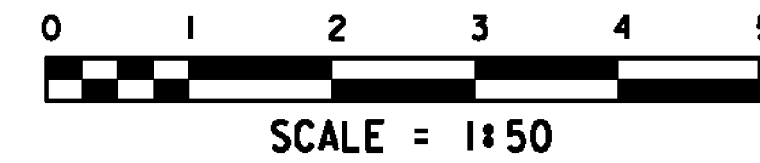
DETAIL OF PILE SPLICE
NOT TO SCALE

PILE SPLICE NOTES

- DO NOT ALLOW PILE SPLICING ON ANY PORTION OF PILE THAT IS TO REMAIN EXPOSED OR BE ABOVE FINISHED GROUND LINE IN COMPLETED STRUCTURE.
- PROVIDE SPLICED SLEEVE MATERIAL SAME AS PILE MATERIAL.
- LET WELDS COOL TO AIR TEMPERATURE BEFORE DRIVING PILES.
- SPLICE MUST DEVELOP THE YIELD STRENGTH OF THE PILE IN BEARING AND BENDING.
- REFER TO SUBSECTION 506.10 (d) FOR FIELD WELDING REQUIREMENTS.



ABUTMENT FOOTING REINFORCING STEEL LAYOUT
SCALE: 1:50
ABUTMENT NO. 1 SHOWN (ABUTMENT NO. 2 SIMILAR)



- LEGEND**
- W.P. = WORKING POINT
 - W.W. = WINGWALL
 - N.F. = NEAR FACE
 - F.F. = FAR FACE
 - E.F. = EACH FACE
 - ▲ = CUT TO FIT IN FIELD
 - I = HP 310x79 BEARING PILE
 - ⊥ = HP 310x79 BATTERED PILE AT 3 TO 12 BATTER

NOTE

- REINFORCING STEEL COVER SHALL BE 80 CLR. UNLESS OTHERWISE SPECIFIED.

WORKING POINTS		
LOCATION	NORTHING	EASTING
W.P. 1	228947.6657	491491.2252
W.P. 2	228943.4670	491496.1225
W.P. 3	228939.2693	491501.0186
W.P. 6	229072.0191	491597.8392
W.P. 7	229067.8204	491602.7365
W.P. 8	229063.6228	491607.6326

NOTE: ALL DIMENSIONS IN MILLIMETERS (mm) EXCEPT WHERE NOTED.

PROJECT NAME: MORRISTOWN	PLOT DATE: 29-MAR-2012
PROJECT NUMBER: STP F 029-(12)C/1	DRAWN BY: S. Merkwon
FILE NAME: z10b194aof.dgn	CHECKED BY: R. Joy
PROJECT LEADER: DMB	SHEET 88 OF 123
DESIGNED BY: S. Delta / D. Kull	
ABUTMENT FOOTINGS AND DETAILS	