

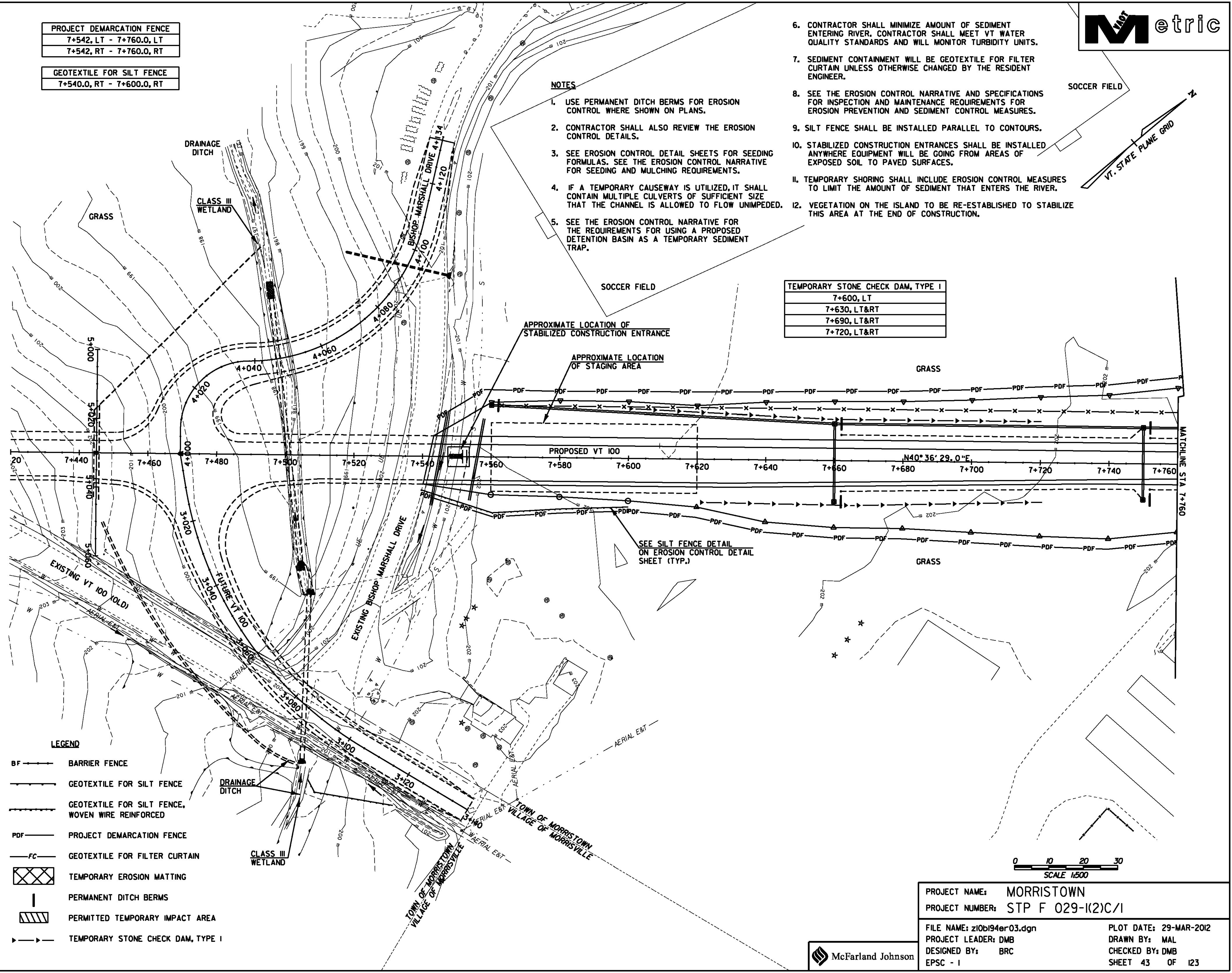
PROJECT DEMARCATION FENCE
7+542, LT - 7+760.0, LT
7+542, RT - 7+760.0, RT
GEOTEXTILE FOR SILT FENCE
7+540.0, RT - 7+600.0, RT

- CONTRACTOR SHALL MINIMIZE AMOUNT OF SEDIMENT ENTERING RIVER. CONTRACTOR SHALL MEET VT WATER QUALITY STANDARDS AND WILL MONITOR TURBIDITY UNITS.
- SEDIMENT CONTAINMENT WILL BE GEOTEXTILE FOR FILTER CURTAIN UNLESS OTHERWISE CHANGED BY THE RESIDENT ENGINEER.
- SEE THE EROSION CONTROL NARRATIVE AND SPECIFICATIONS FOR INSPECTION AND MAINTENANCE REQUIREMENTS FOR EROSION PREVENTION AND SEDIMENT CONTROL MEASURES.
- SILT FENCE SHALL BE INSTALLED PARALLEL TO CONTOURS.
- STABILIZED CONSTRUCTION ENTRANCES SHALL BE INSTALLED ANYWHERE EQUIPMENT WILL BE GOING FROM AREAS OF EXPOSED SOIL TO PAVED SURFACES.
- TEMPORARY SHORING SHALL INCLUDE EROSION CONTROL MEASURES TO LIMIT THE AMOUNT OF SEDIMENT THAT ENTERS THE RIVER.
- VEGETATION ON THE ISLAND TO BE RE-ESTABLISHED TO STABILIZE THIS AREA AT THE END OF CONSTRUCTION.

NOTES

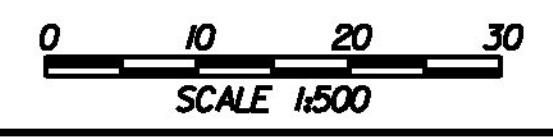
- USE PERMANENT DITCH BERMS FOR EROSION CONTROL WHERE SHOWN ON PLANS.
- CONTRACTOR SHALL ALSO REVIEW THE EROSION CONTROL DETAILS.
- SEE EROSION CONTROL DETAIL SHEETS FOR SEEDING FORMULAS. SEE THE EROSION CONTROL NARRATIVE FOR SEEDING AND MULCHING REQUIREMENTS.
- IF A TEMPORARY CAUSEWAY IS UTILIZED, IT SHALL CONTAIN MULTIPLE CULVERTS OF SUFFICIENT SIZE THAT THE CHANNEL IS ALLOWED TO FLOW UNIMPEDED.
- SEE THE EROSION CONTROL NARRATIVE FOR THE REQUIREMENTS FOR USING A PROPOSED DETENTION BASIN AS A TEMPORARY SEDIMENT TRAP.

TEMPORARY STONE CHECK DAM, TYPE I
7+600, LT
7+630, LT&RT
7+690, LT&RT
7+720, LT&RT



LEGEND

- BF — BARRIER FENCE
- GEOTEXTILE FOR SILT FENCE
- GEOTEXTILE FOR SILT FENCE, WOVEN WIRE REINFORCED
- PDF — PROJECT DEMARCATION FENCE
- FC — GEOTEXTILE FOR FILTER CURTAIN
- TEMPORARY EROSION MATTING
- PERMANENT DITCH BERMS
- PERMITTED TEMPORARY IMPACT AREA
- TEMPORARY STONE CHECK DAM, TYPE I



PROJECT NAME:	MORRISTOWN
PROJECT NUMBER:	STP F 029-1(2)C/1
FILE NAME:	z10b194er03.dgn
PROJECT LEADER:	DMB
DESIGNED BY:	BRC
EPSC - I	
PLOT DATE:	29-MAR-2012
DRAWN BY:	MAL
CHECKED BY:	DMB
SHEET	43 OF 123