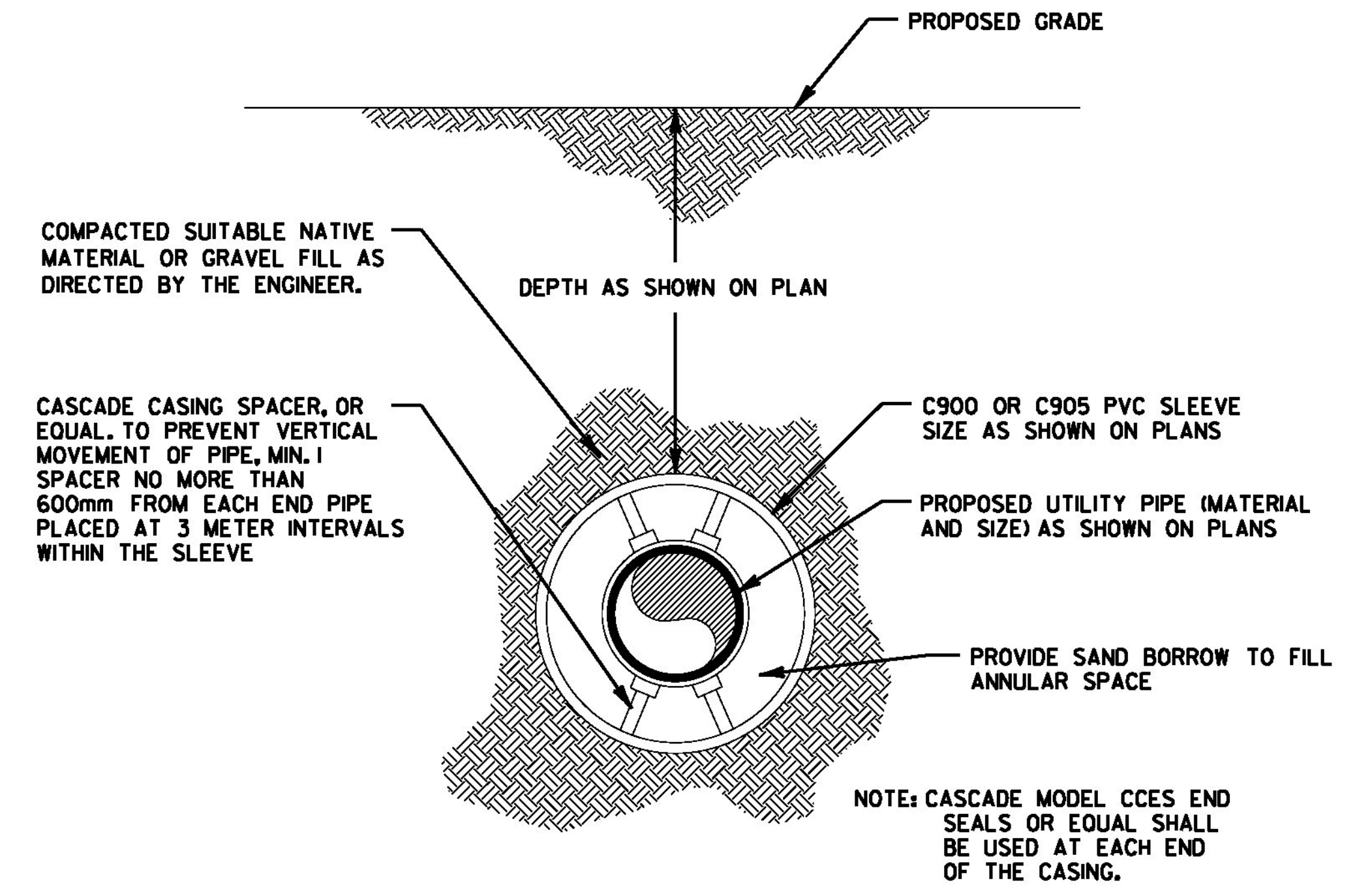


WATER MAIN TEE

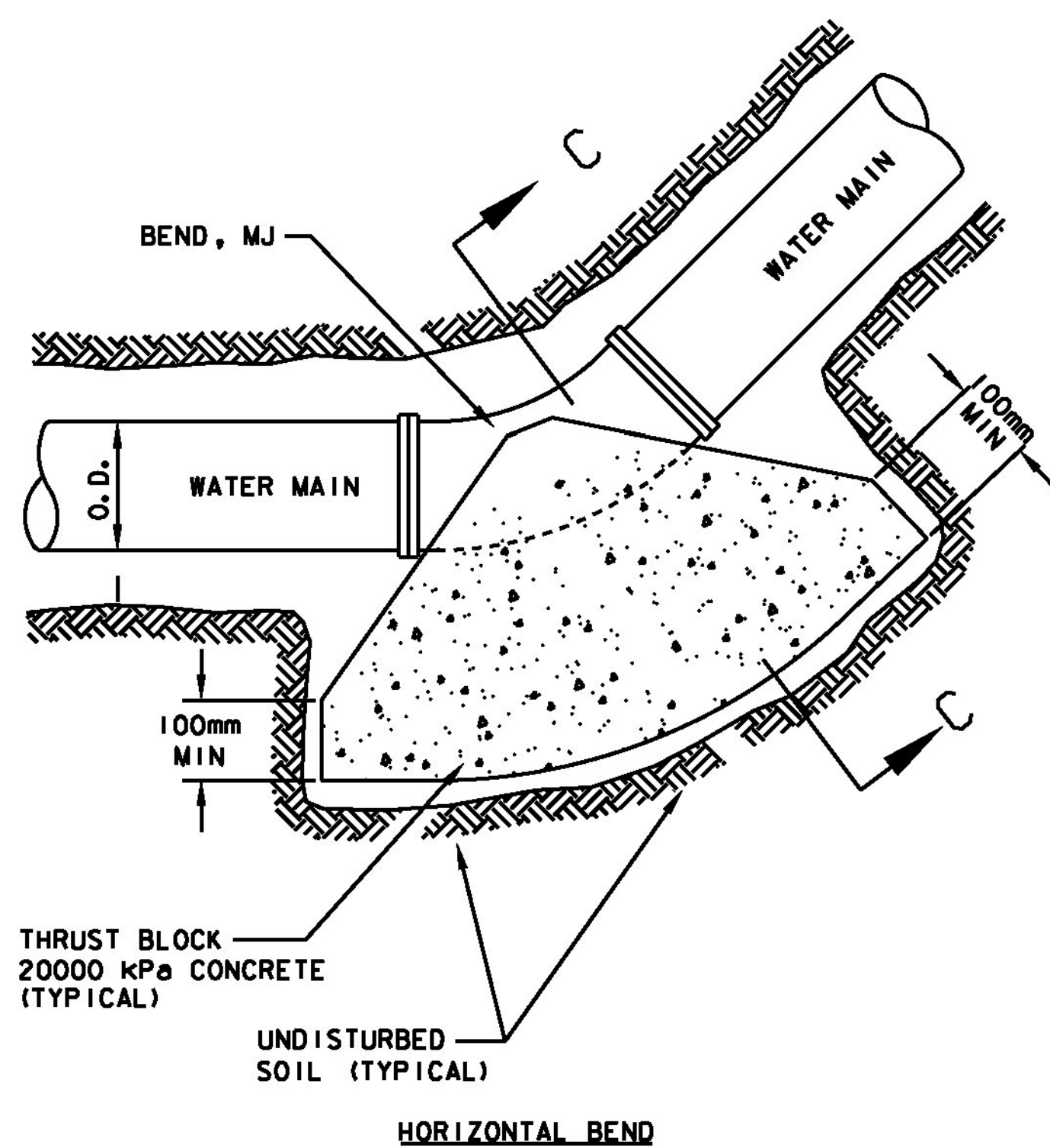
FITTING SIZES	BEARING AREA OF BLOCK IN SQ. m.				
	TEE & END	90° BEND	45° BEND	22 1/2° BEND	11 1/4° BEND
150	0.21	0.31	0.17	0.08	0.05
200	0.37	0.53	0.29	0.14	0.07
250	0.56	0.80	0.42	0.22	0.11
300	0.80	1.12	0.60	0.31	0.16
350	0.80	1.12	0.60	0.31	0.16
400	1.01	1.43	0.77	0.40	0.20
450	1.29	1.67	0.90	0.46	0.23

• RESTRAINED JOINT FITTINGS MAY BE USED IN LIEU OF THRUST BLOCKS

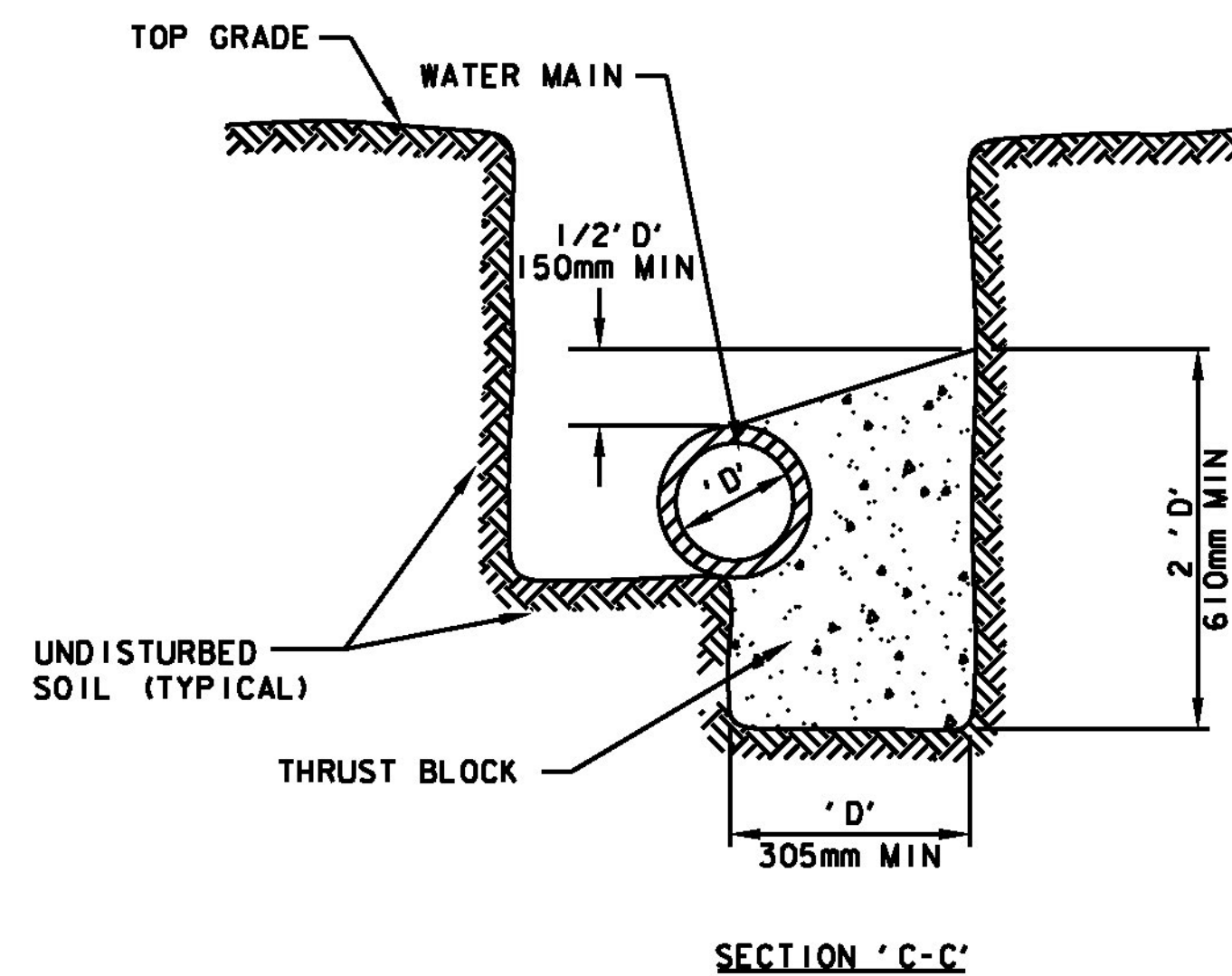


UTILITY SLEEVE DETAIL

NOT TO SCALE



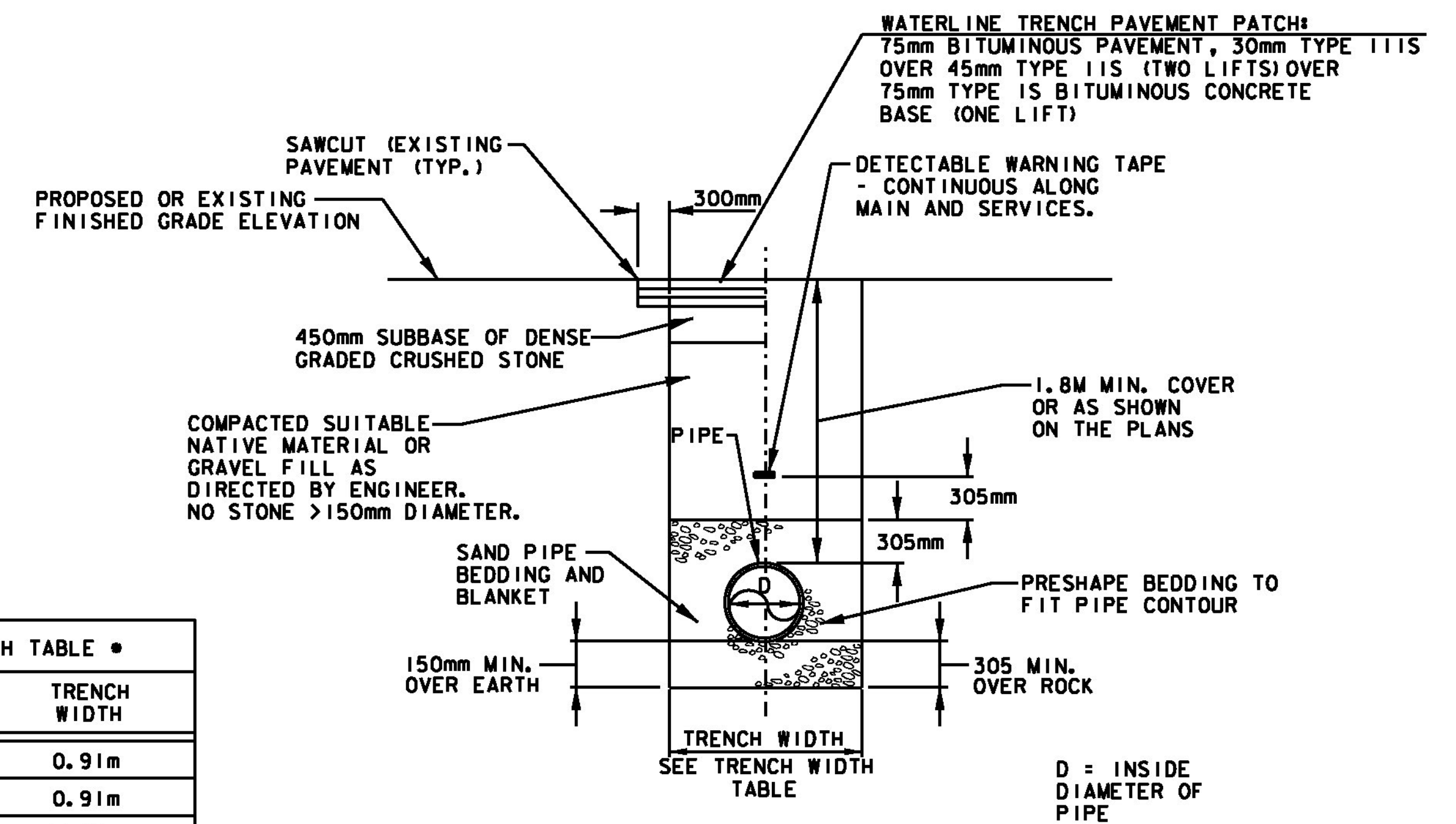
HORIZONTAL BEND



SECTION 'C-C'

THRUST BLOCK DETAILS - TYPICAL FOR WATER MAIN, FIRE PROTECTION MAIN, AND SANITARY FORCE MAIN PIPING

NOT TO SCALE

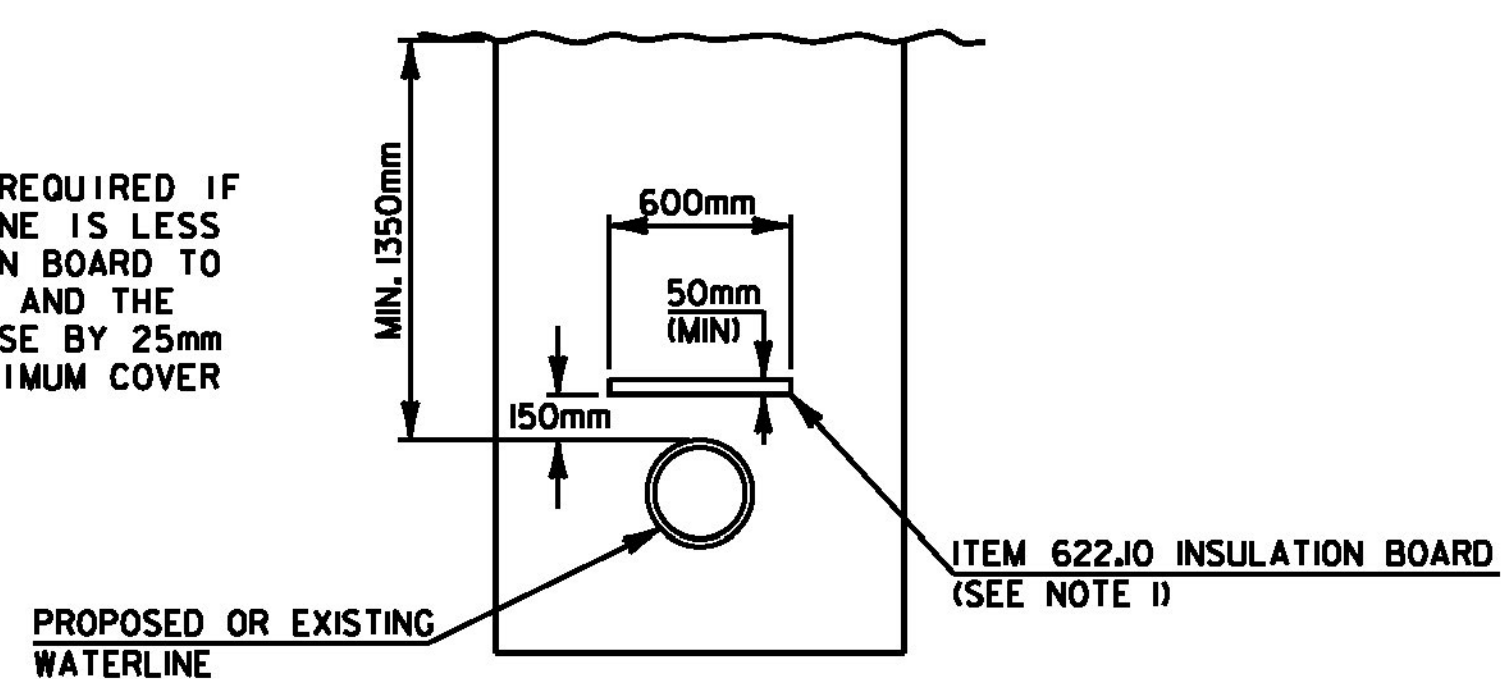


WATER LINE TRENCH DETAIL

NOT TO SCALE

NOTE:

- INSULATION BOARD ONLY REQUIRED IF COVER OVER THE WATERLINE IS LESS THAN 1800mm. INSULATION BOARD TO BE 50mm MIN. THICKNESS AND THE THICKNESS SHALL INCREASE BY 25mm FOR EVERY 300mm OF MINIMUM COVER NOT PROVIDED.



WATERLINE INSULATION DETAIL

NOT TO SCALE

TRENCH WIDTH TABLE •	
PIPE DIAMETER (mm)	TRENCH WIDTH
<100	0.91m
100 - 150	0.91m
203	0.91m
254	0.91m
305	0.91m
375	1.2m
406	1.2m
457	1.2m
533	1.2m
610	1.4m

• USE WIDTHS PROVIDED IN STANDARD SPECIFICATIONS WHEN ROCK, LEDGE, HARDPAN, OR OTHER UNYIELDING MATERIAL IS ENCOUNTERED, AS DIRECTED BY ENGINEER.

PROJECT NAME: MORRISTOWN  
PROJECT NUMBER: STP F 029-1(2)C/1

FILE NAME: z10b194ut1det1.dgn  
PROJECT LEADER: DMB  
DESIGNED BY: BRC  
UTILITY DETAIL SHEET - 1

PLOT DATE: 29-MAR-2012  
DRAWN BY: MAL  
CHECKED BY: DMB  
SHEET 35 OF 123