

DITCH BERM			
STA	W (mm)	H (mm)	L (m)
7+562.0, LT	300	300	3.6
7+662.0, LT	300	300	3.6
7+662.0, RT	300	300	3.6
7+752.0, LT	300	300	3.6
7+752.0, RT	300	300	3.6

SEE MISCELLANEOUS DETAIL SHEET

CHAIN LINK FENCE, 1.8m
VINYL COATED, GREEN
7+562.0, LT TO 7+760.0, LT

DO NOT DISTURB
EXISTING DRIVEWAY
TO BISHOP MARSHALL
SCHOOL.

7+542.3
STA 7+542.5, 14.3 RT TO STA 7+547.3, 13.1 LT
CONSTRUCT 450mm x 27.8m C905 PVC SLEEVE
CONSTRUCT YIELDING MARKER POSTS AT
SLEEVE ENDS 28.0m

11.25 LT
STA 7+553.8, 12.7 RT TO STA 7+557.9, 11.1 LT
CONSTRUCT 300mm x 24.2m C900 PVC SLEEVE
CONSTRUCT YIELDING MARKER POSTS AT
SLEEVE ENDS 24.4m

1
STA 7+560.0, 15.0 LT TO STA 7+660.0, 10.7 LT
CONSTRUCT 450mm x 99.0m OPTION PIPE
RCP (CLASS III), CPEP (SL)
CONSTRUCT PRCDI-A WITH TYPE B
GRATE, AT STA 7+560.0

2
STA 7+660.0, 10.7 LT TO STA 7+750.0, 10.5 LT
CONSTRUCT 450mm x 89.0m OPTION PIPE
RCP (CLASS III), CPEP (SL)
CONSTRUCT PRCDI-A WITH TYPE B
GRATE, AT STA 7+660.0

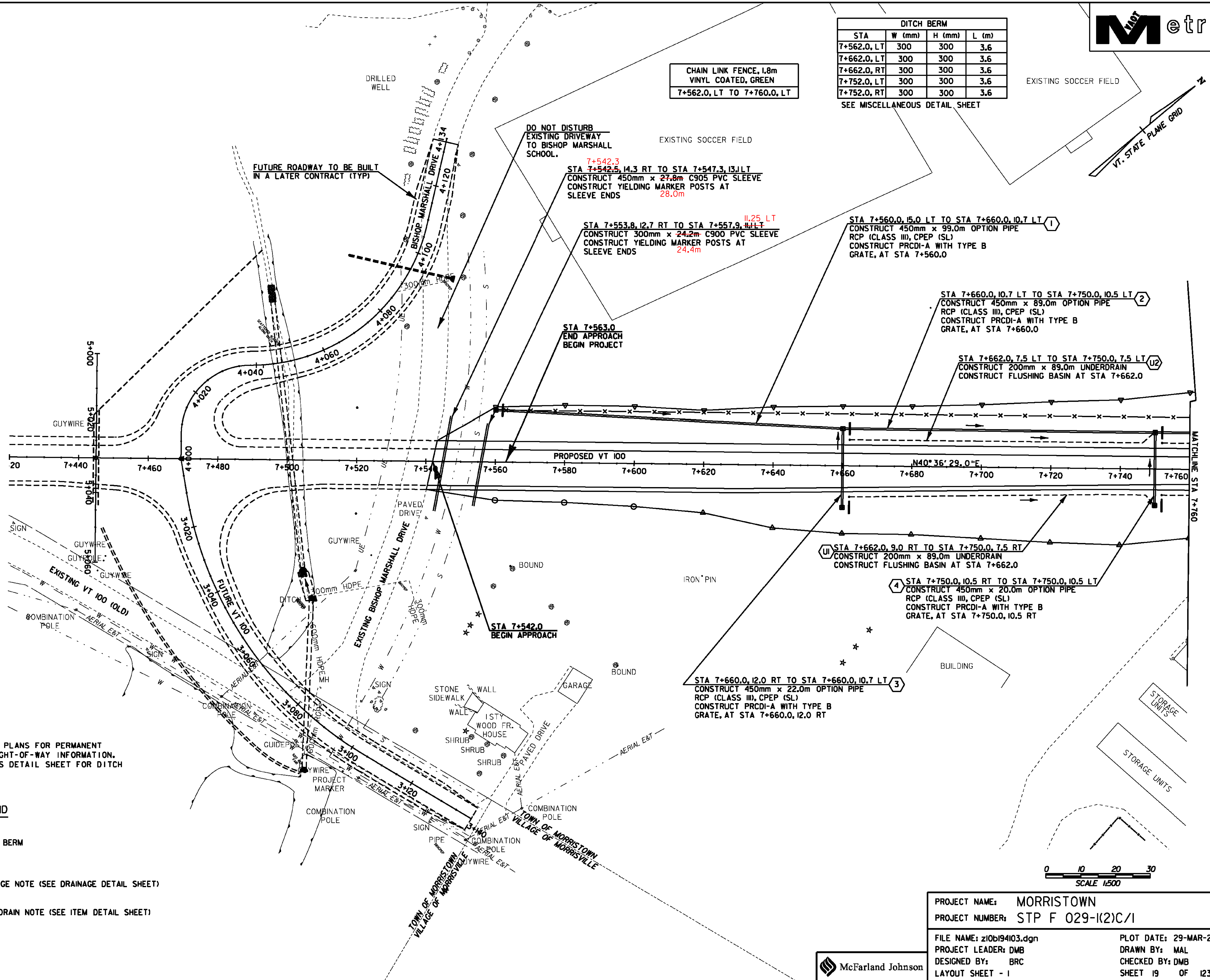
U2
STA 7+662.0, 7.5 LT TO STA 7+750.0, 7.5 LT
CONSTRUCT 200mm x 89.0m UNDERDRAIN
CONSTRUCT FLUSHING BASIN AT STA 7+662.0

STA 7+563.0
END APPROACH
BEGIN PROJECT

U
STA 7+662.0, 9.0 RT TO STA 7+750.0, 7.5 RT
CONSTRUCT 200mm x 89.0m UNDERDRAIN
CONSTRUCT FLUSHING BASIN AT STA 7+662.0

4
STA 7+750.0, 10.5 RT TO STA 7+750.0, 10.5 LT
CONSTRUCT 450mm x 20.0m OPTION PIPE
RCP (CLASS III), CPEP (SL)
CONSTRUCT PRCDI-A WITH TYPE B
GRATE, AT STA 7+750.0, 10.5 RT

3
STA 7+660.0, 12.0 RT TO STA 7+660.0, 10.7 LT
CONSTRUCT 450mm x 22.0m OPTION PIPE
RCP (CLASS III), CPEP (SL)
CONSTRUCT PRCDI-A WITH TYPE B
GRATE, AT STA 7+660.0, 12.0 RT



- NOTES:**
- SEE RIGHT-OF-WAY PLANS FOR PERMANENT AND TEMPORARY RIGHT-OF-WAY INFORMATION.
 - SEE MISCELLANEOUS DETAIL SHEET FOR DITCH BERM DETAILS.

LEGEND

- DITCH BERM
- DRAINAGE NOTE (SEE DRAINAGE DETAIL SHEET)
- UNDERDRAIN NOTE (SEE ITEM DETAIL SHEET)



PROJECT NAME: MORRISTOWN
PROJECT NUMBER: STP F 029-(K2)C/1
FILE NAME: z10b194103.dgn PLOT DATE: 29-MAR-2012
PROJECT LEADER: DMB DRAWN BY: MAL
DESIGNED BY: BRC CHECKED BY: DMB
LAYOUT SHEET - 1 SHEET 19 OF 123