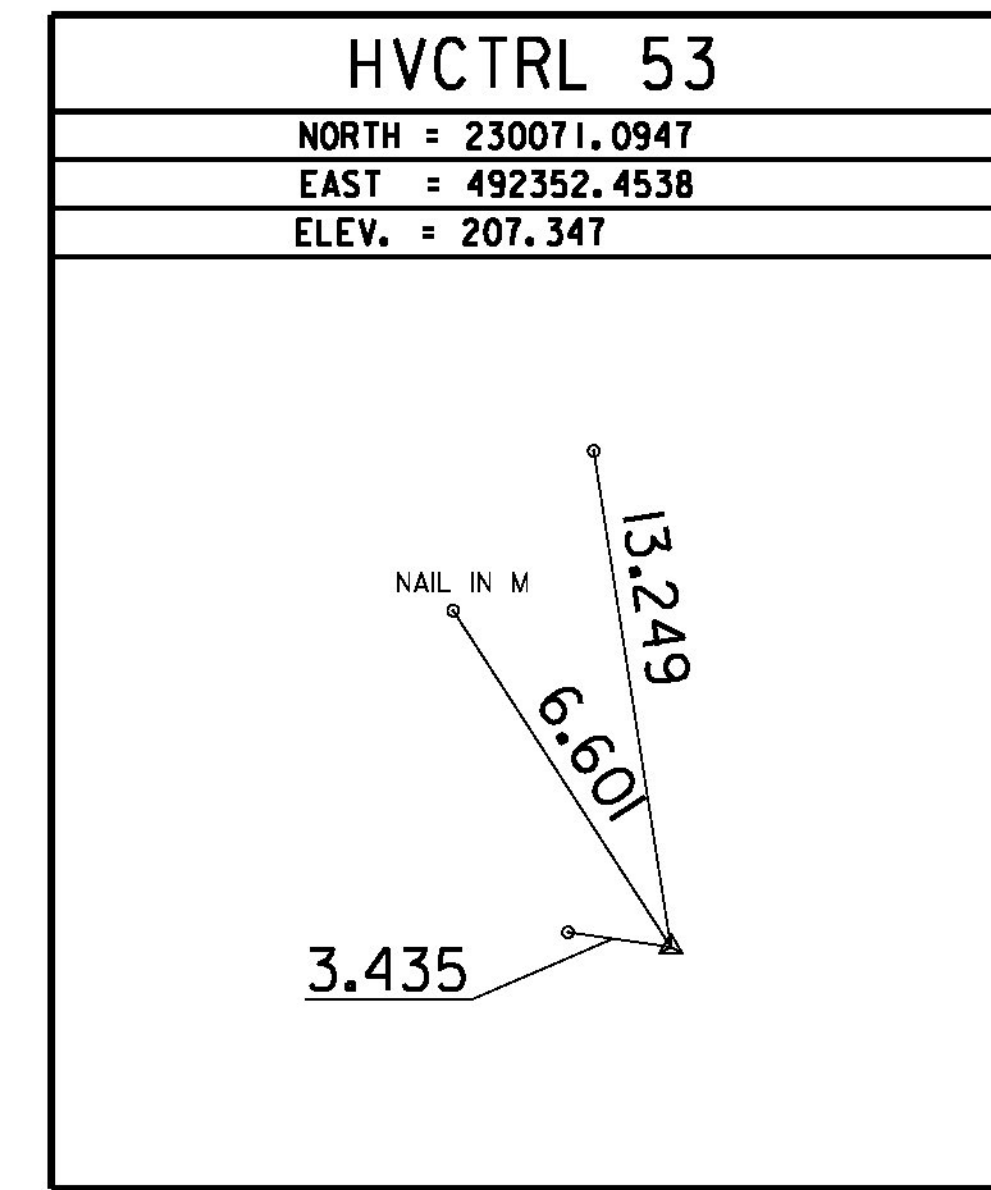
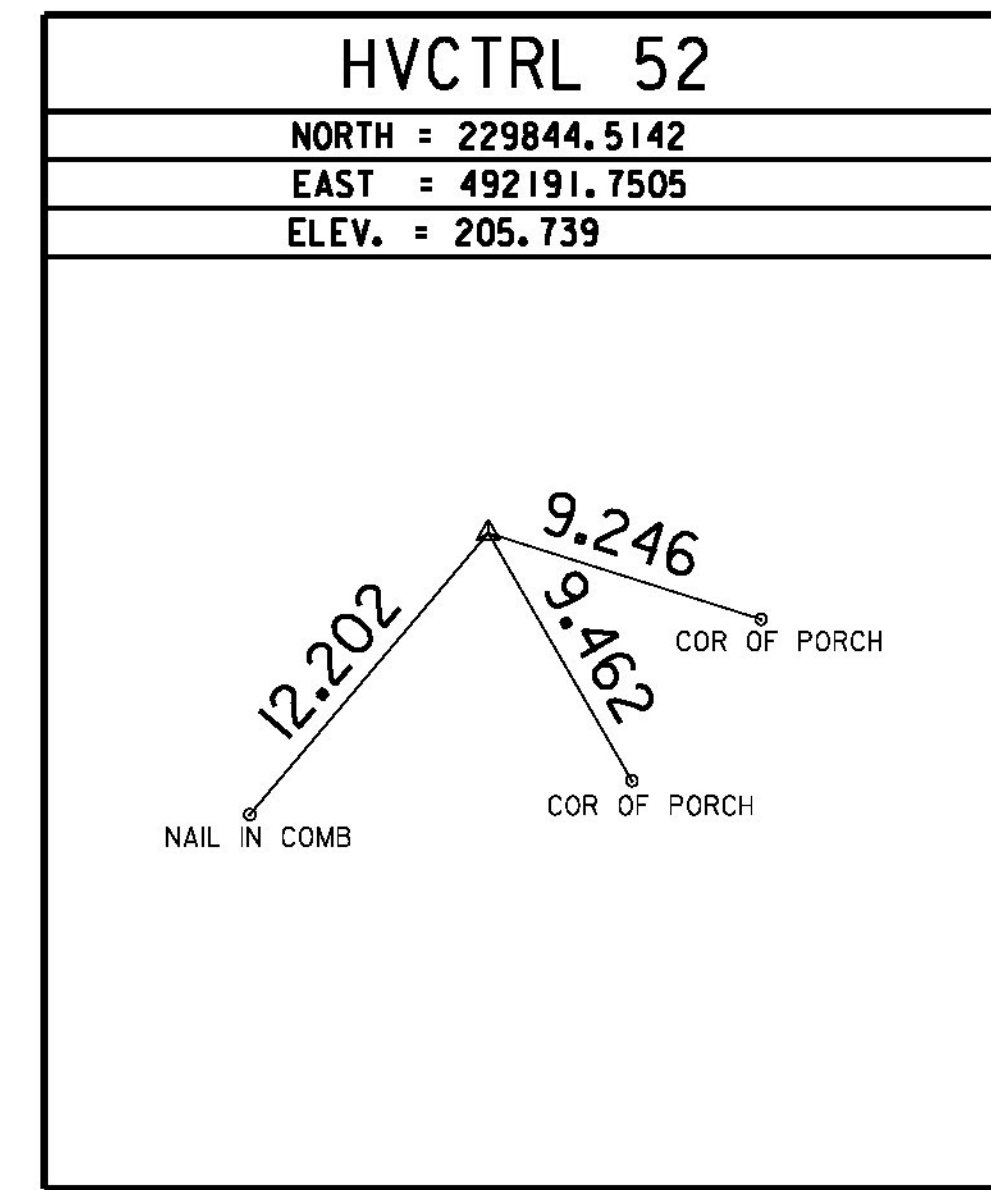
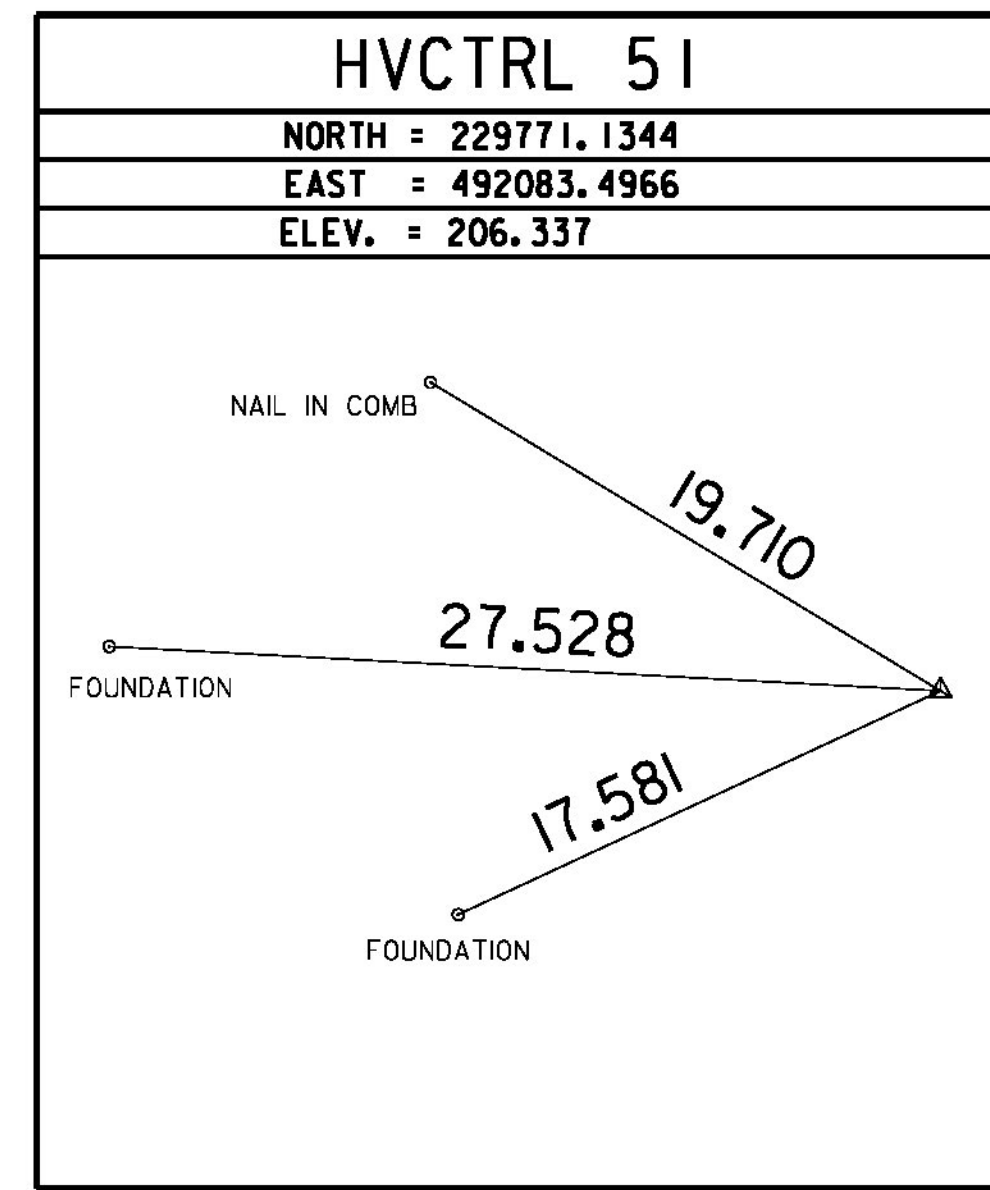
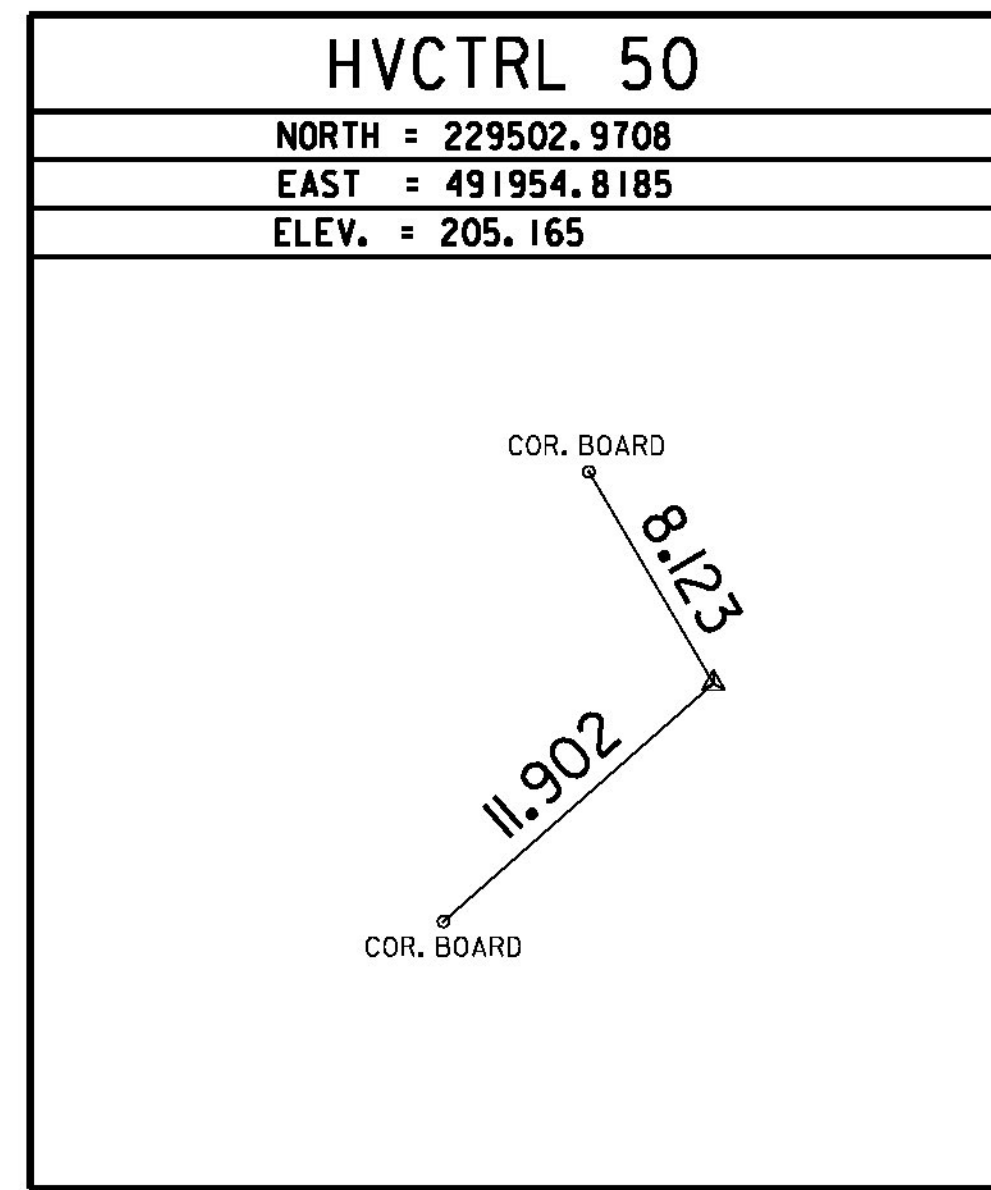
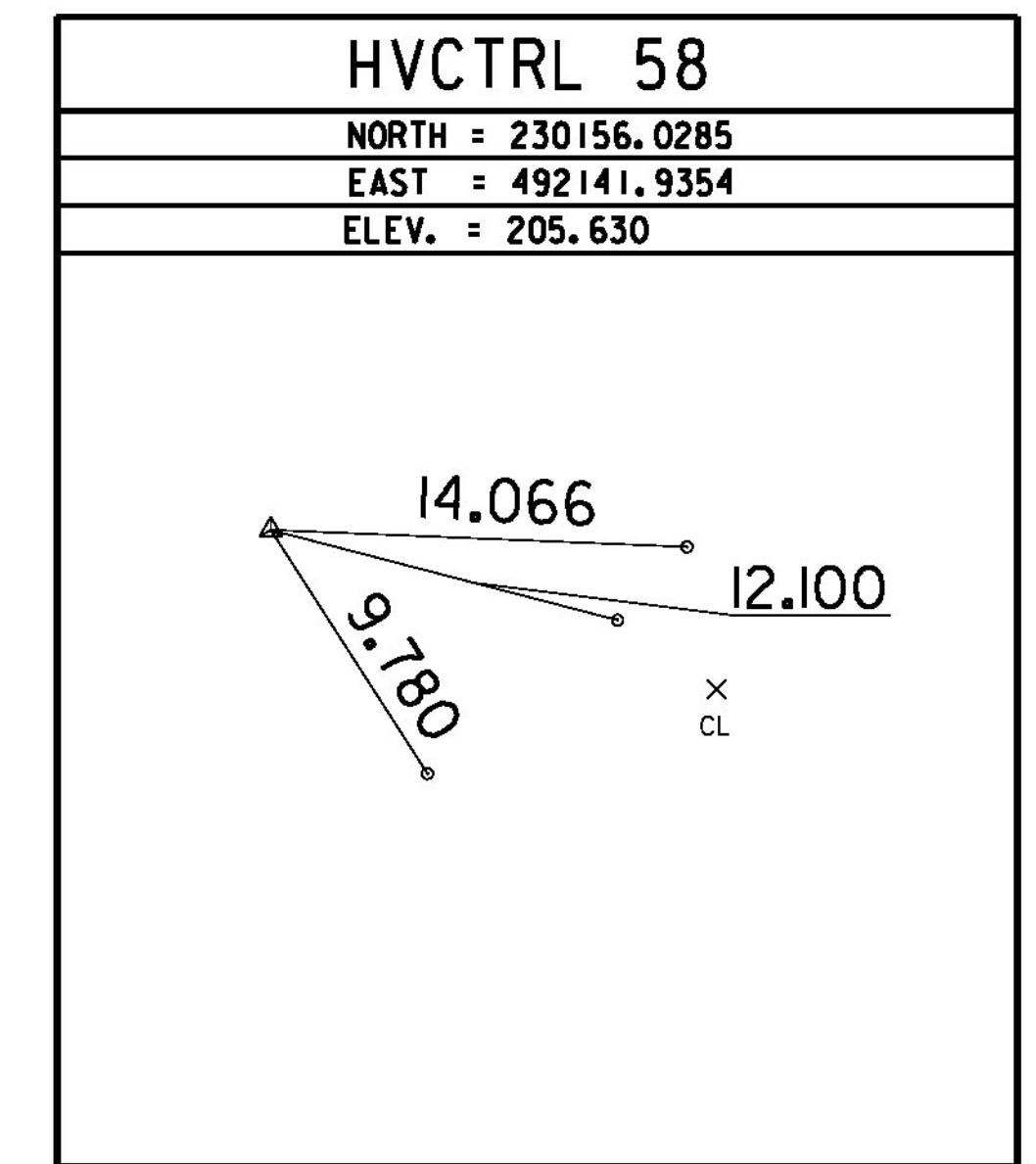
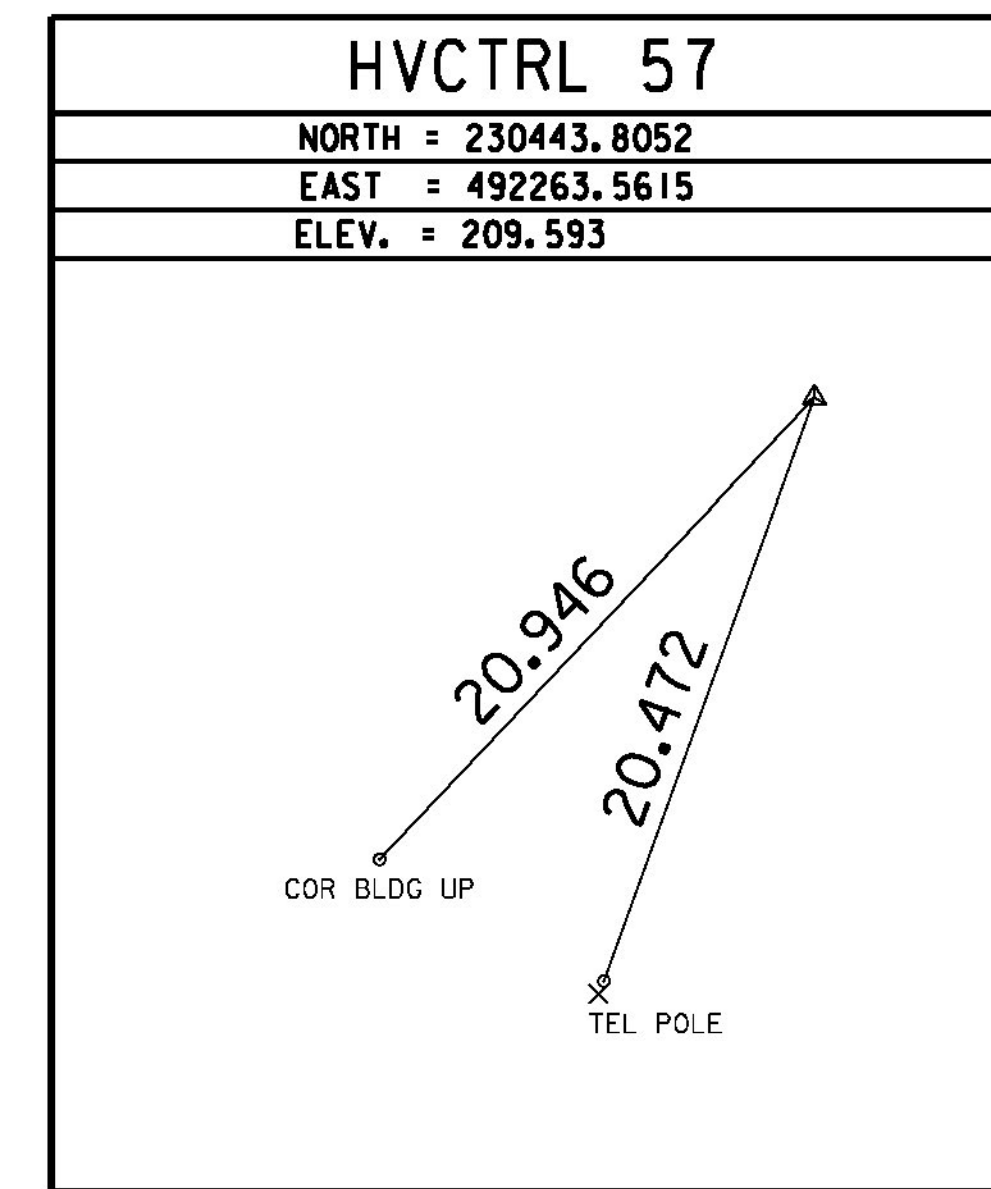
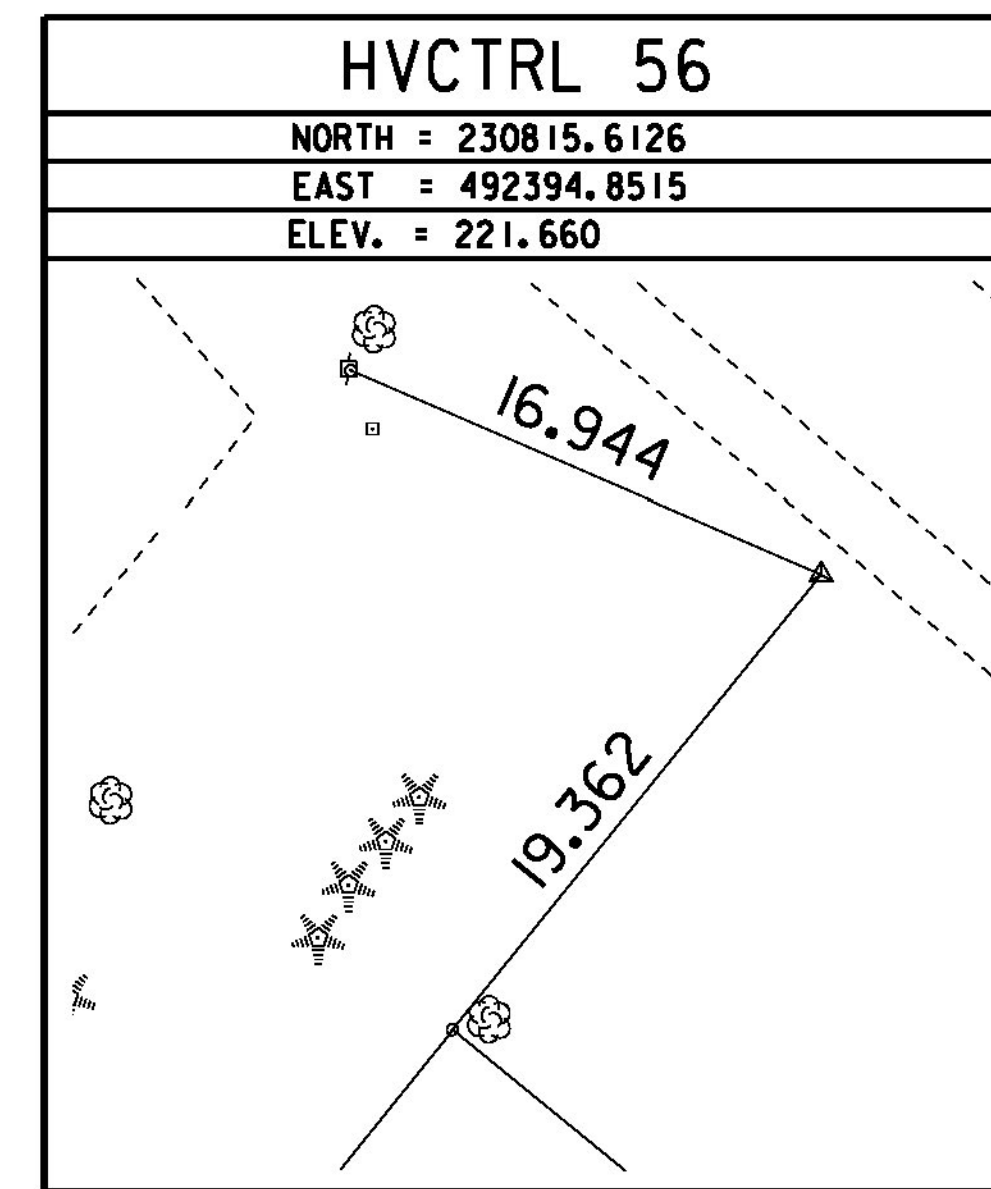
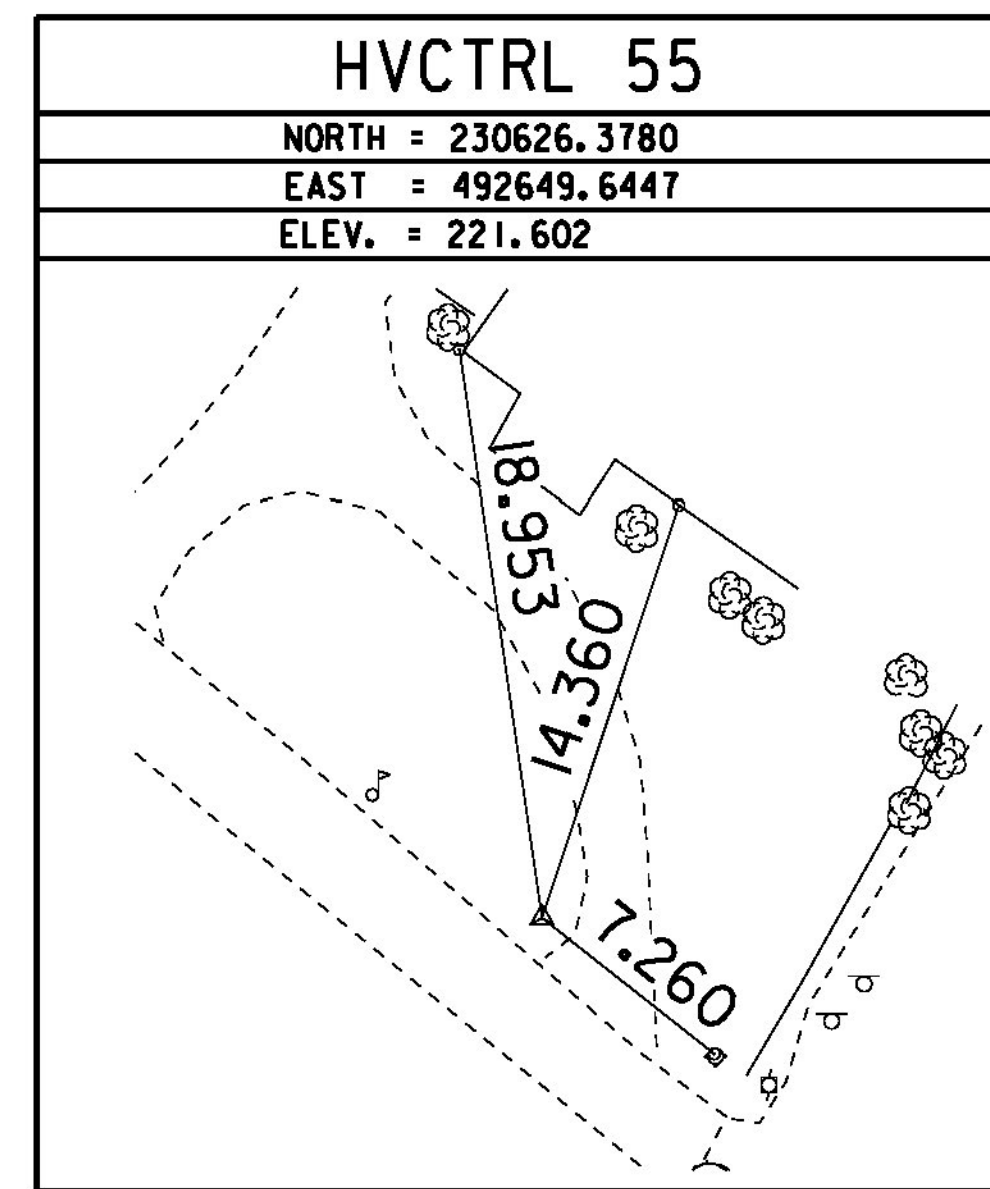
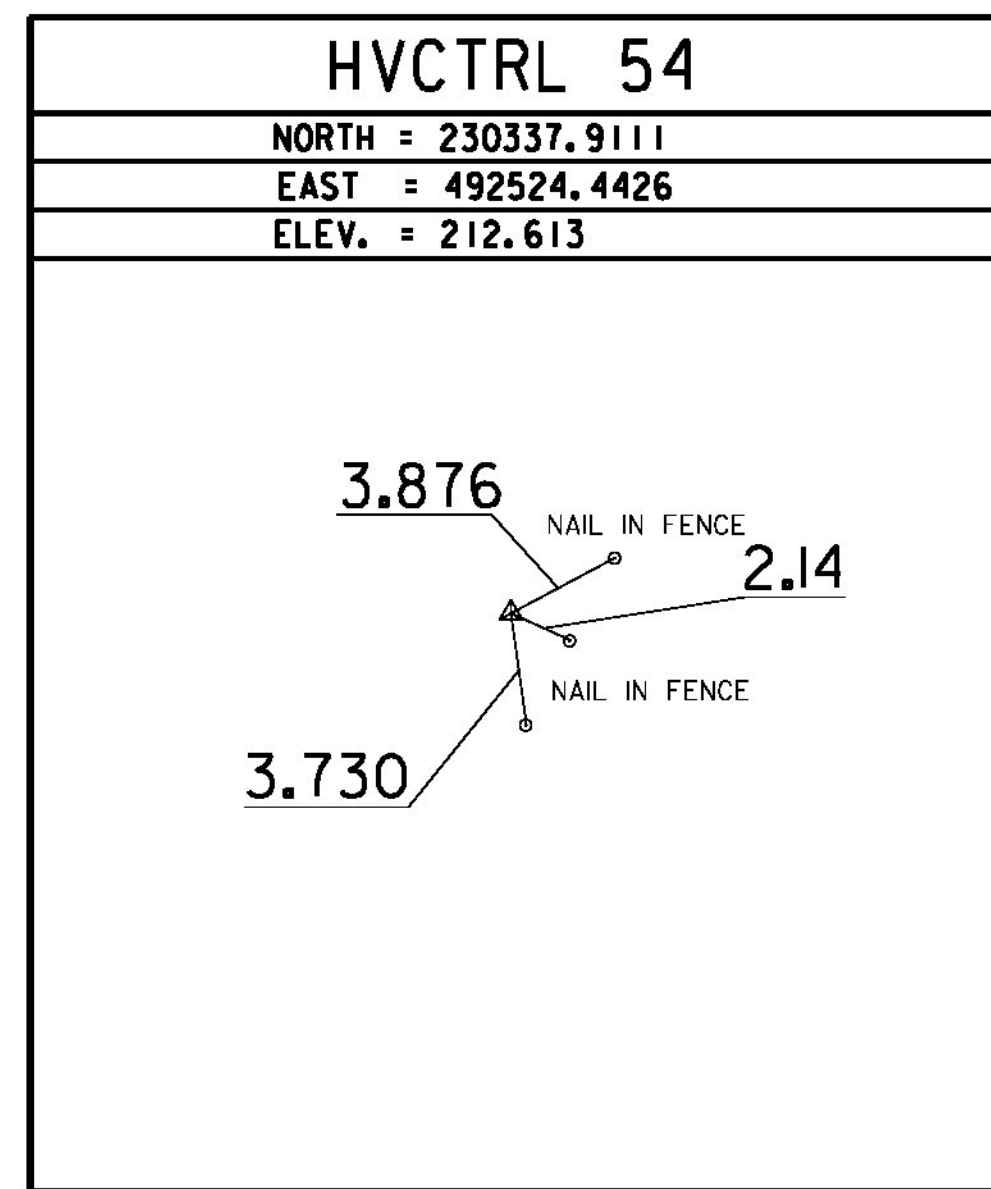


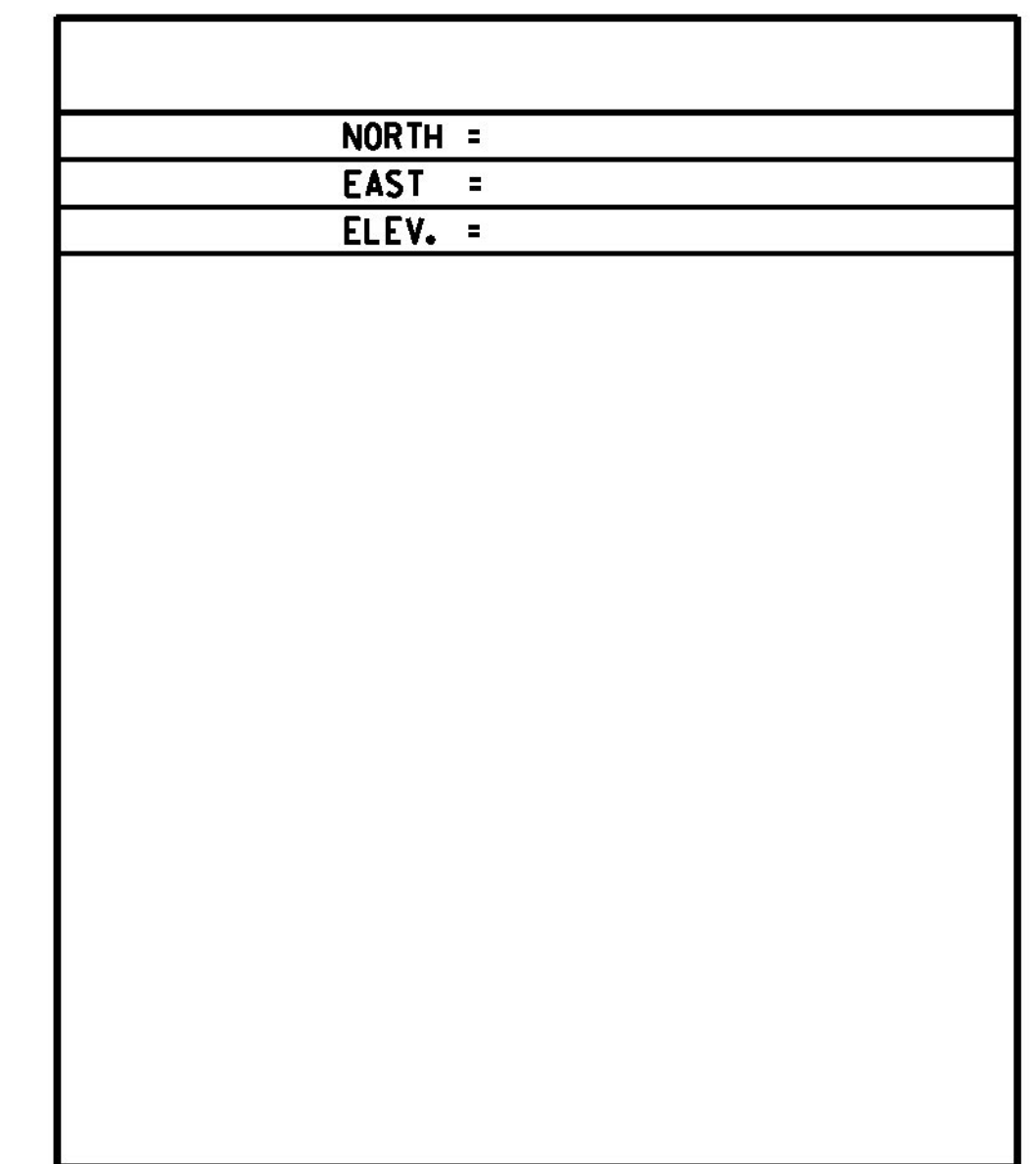
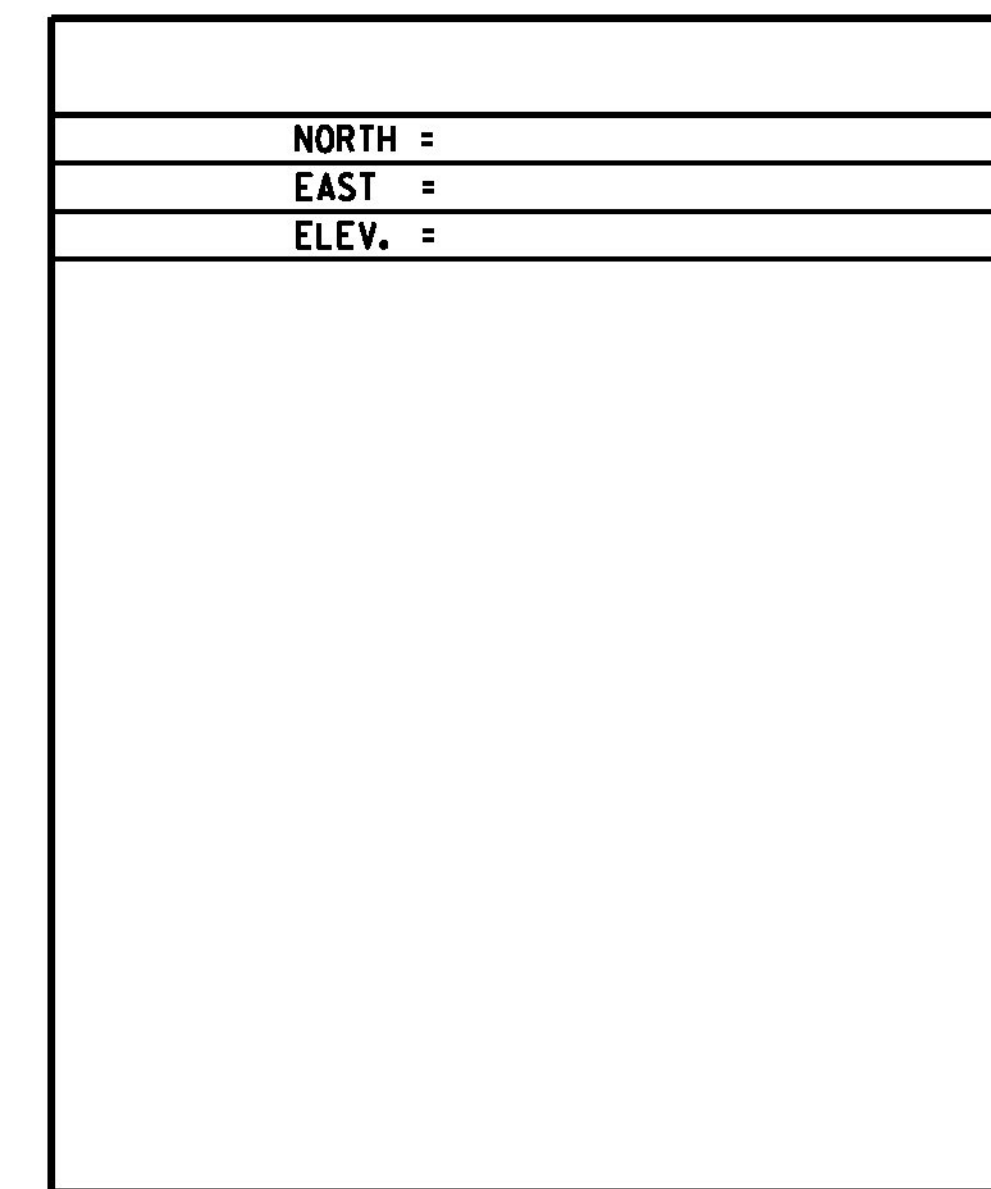
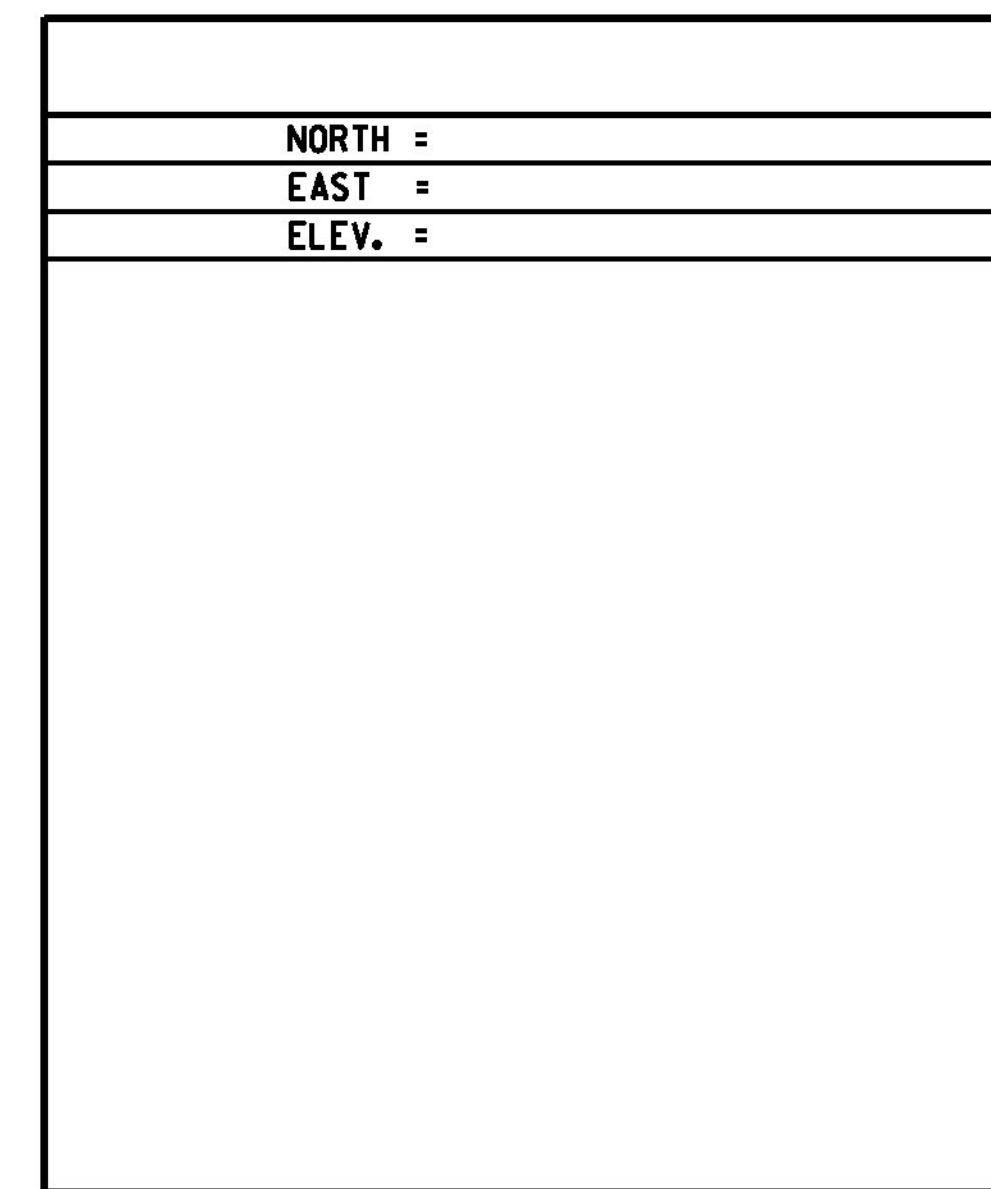
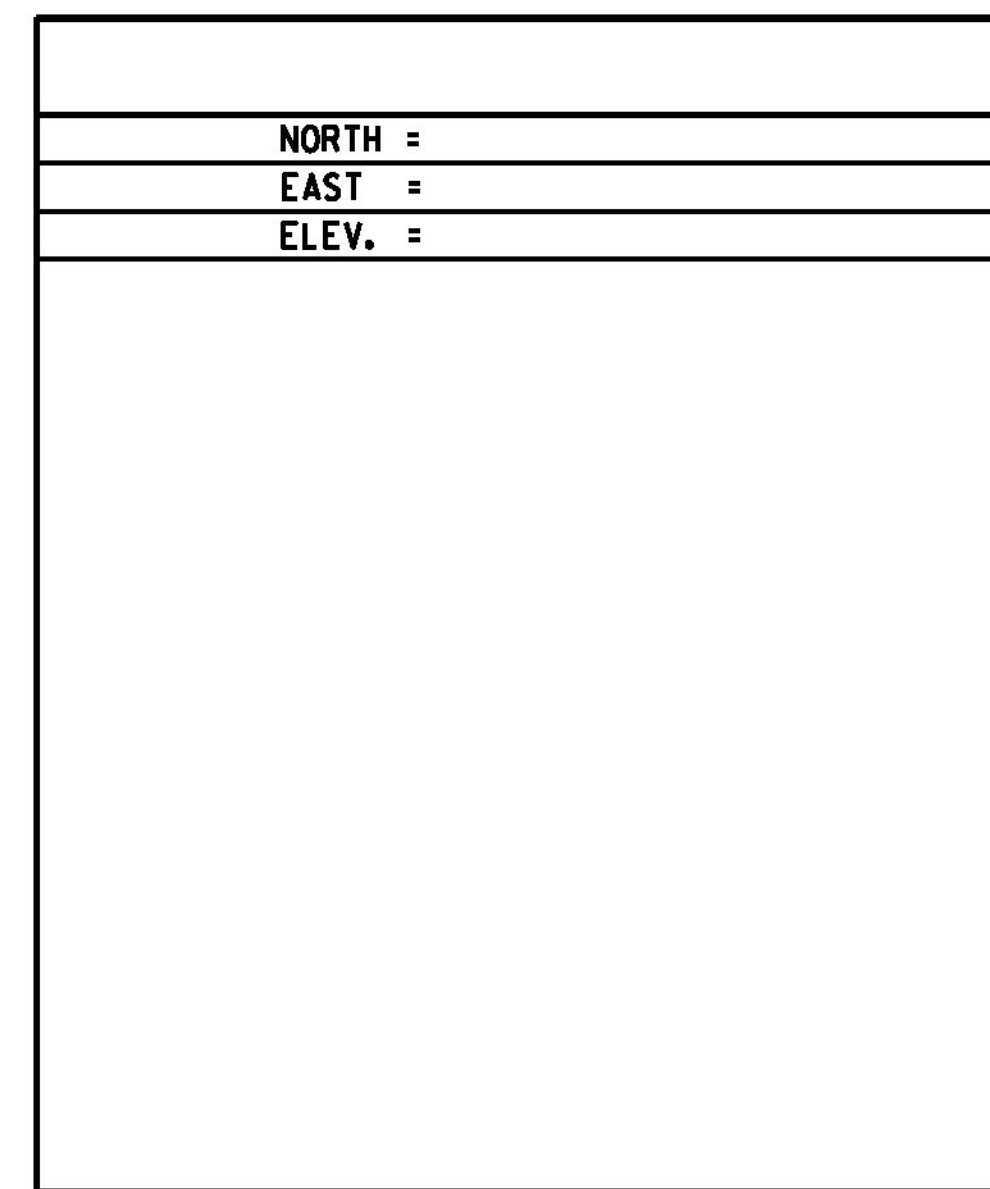
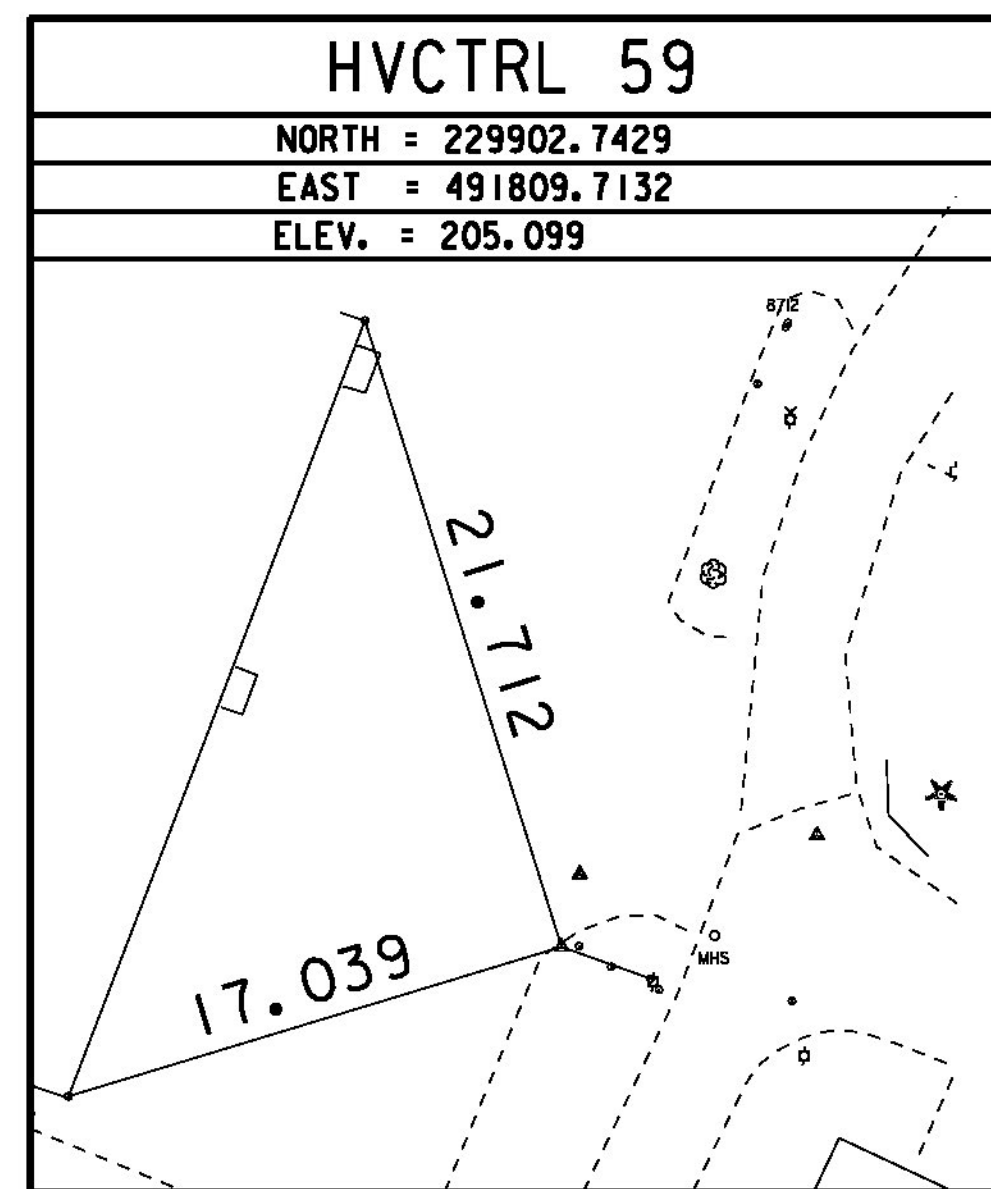
TRAVERSE TIES



TRAVERSE TIES



TRAVERSE TIES



NOTE: ALL DIMENSIONS IN METERS (M) EXCEPT WHERE NOTED.

|            |               |
|------------|---------------|
| DATUM      |               |
| VERTICAL   | NAVD 88       |
| HORIZONTAL | NAD 83 (92)   |
| ADJUSTMENT | Least Squares |

NOTE: TRAVERSE TIES 31 & 39 ARE WITHIN THE LIMITS OF THIS PROJECT. OTHER TRAVERSE TIES ARE SHOWN FOR REFERENCE ONLY.

PROJECT NAME: MORRISTOWN  
 PROJECT NUMBER: STP F 029-1(2)C/1

FILE NAME: z10b19411e02.dgn  
 PROJECT LEADER: DMB  
 DESIGNED BY: BRC  
 TIE INFORMATION SHEET - 2

PLOT DATE: 29-MAR-2012  
 DRAWN BY: C.CYR  
 CHECKED BY: DMB  
 SHEET 17 OF 123