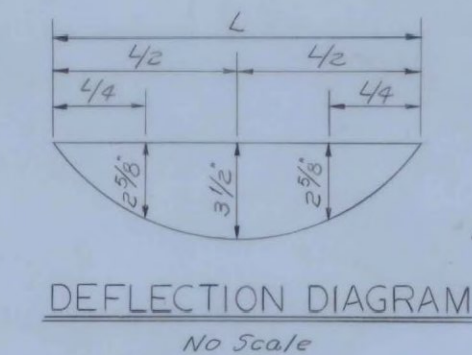
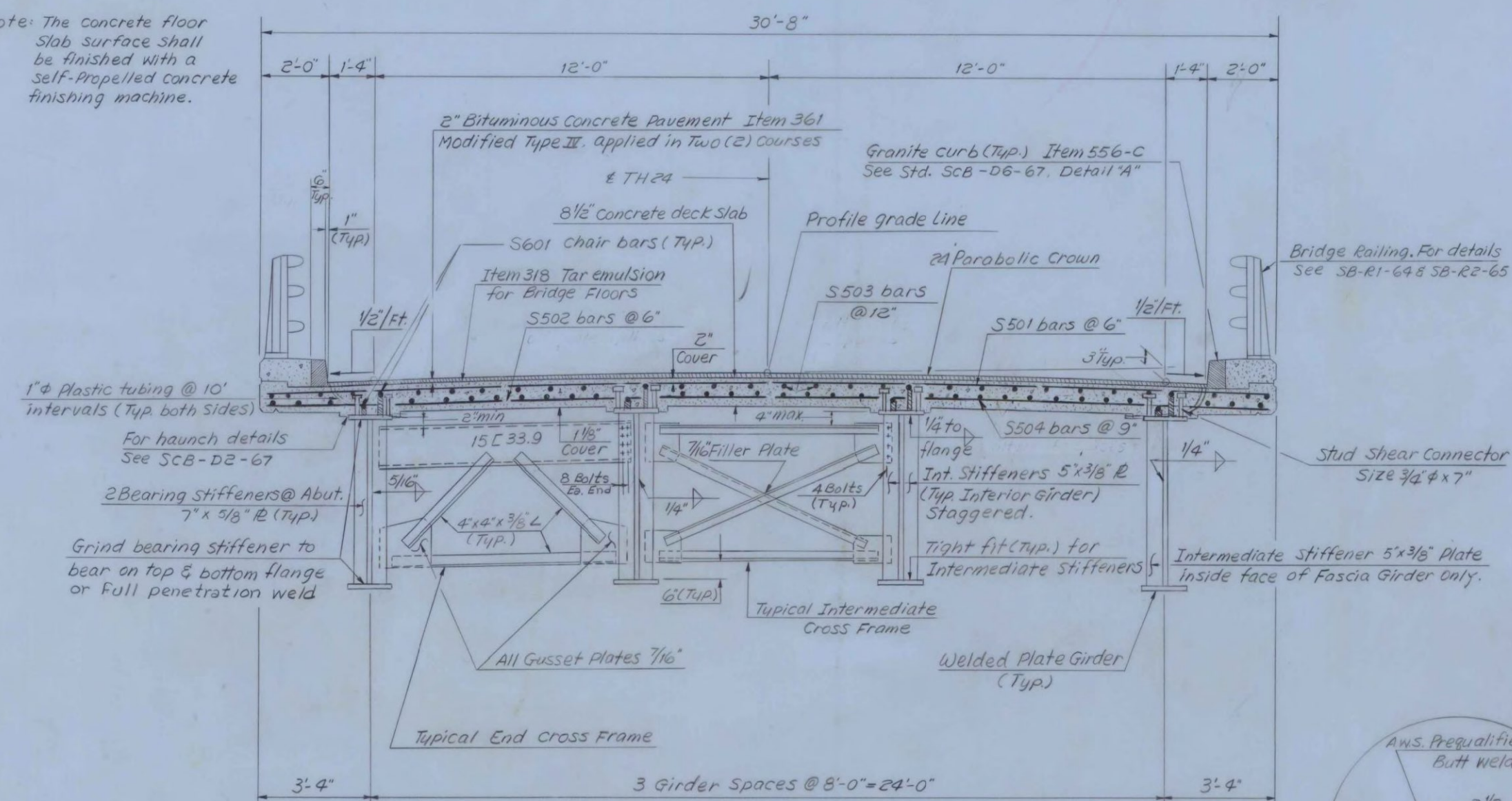
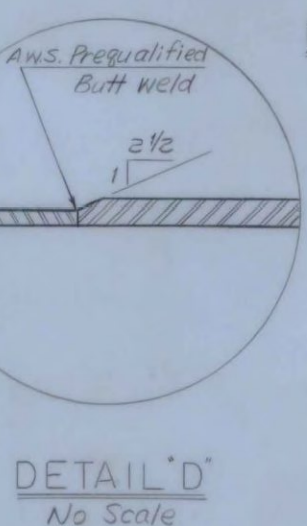
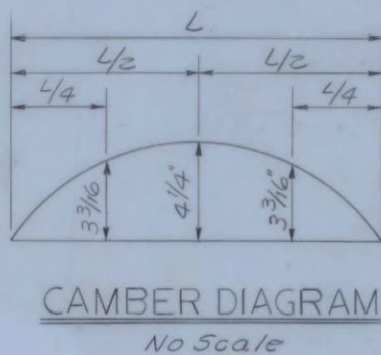


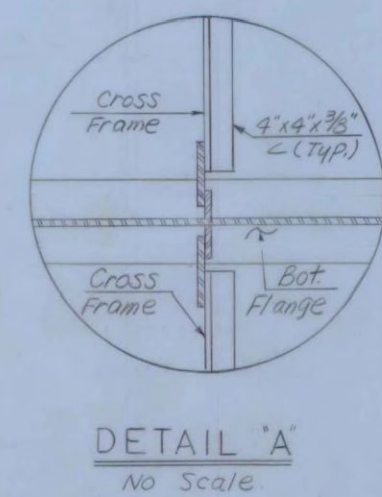
Note: The concrete floor slab surface shall be finished with a self-propelled concrete finishing machine.



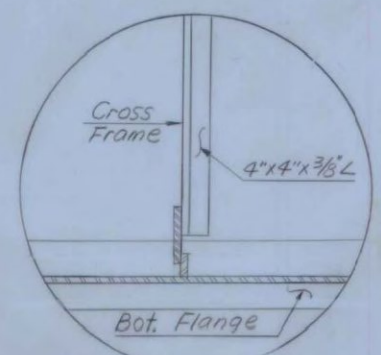
TYPICAL SECTION  
Scale: 3/8" = 1'-0"



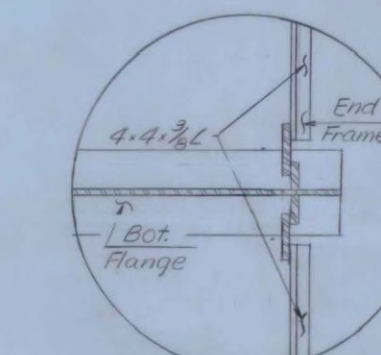
DETAIL 'D'  
No Scale



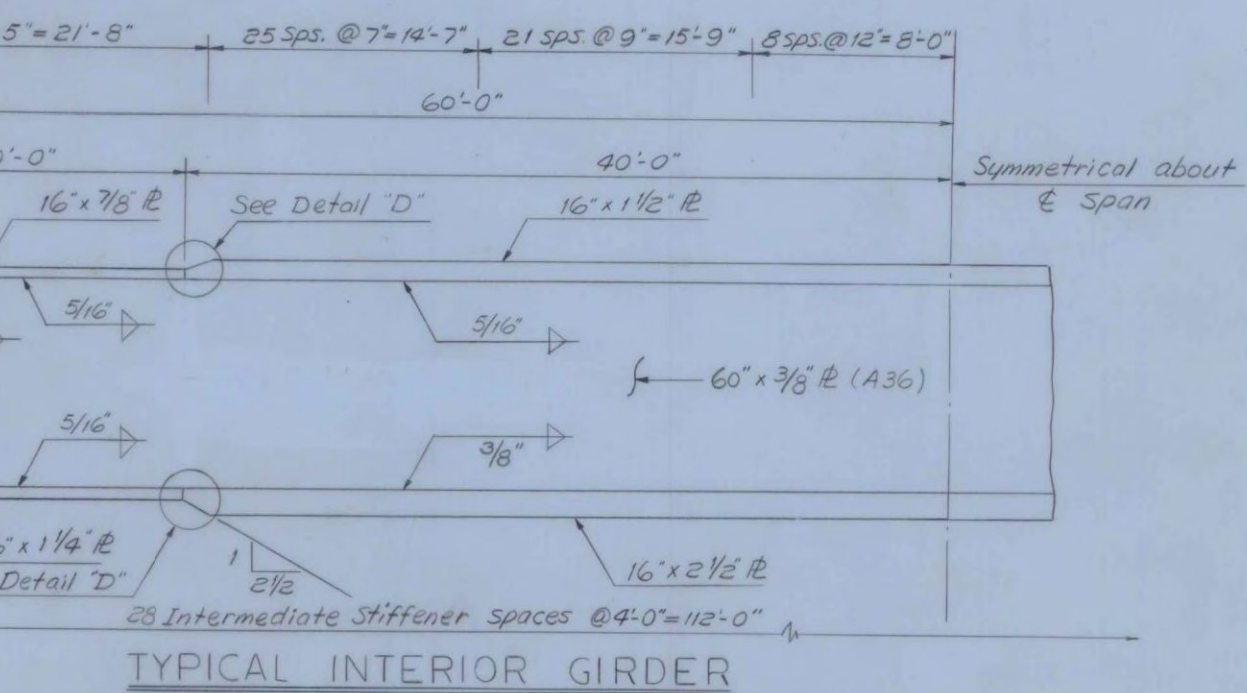
DETAIL 'A'  
No Scale



DETAIL 'B'  
No Scale



DETAIL 'C'  
No Scale



TYPICAL INTERIOR GIRDER  
No Scale

- NOTES
1. For General Notes see BE 901
  2. For Joint Details see BE 905
  3. For Beam Haunch Details see SCB-D2-67
  4. All studs are to be 3/8" x 7" welded studs. If 3/8" studs are used, increase spacing shown for 3/4" studs by 50%
  5. CROSS FRAME NOTES: All gusset and connection plates shall be 7/16" plates. Gusset and connection plates shall be welded to stiffeners with a 5/16" fillet weld. All angles shall be 4-1/4" x 3/8" angles
  6. All shop connections for cross frames shall be 3/8" fillet welds. All field connections shall be 7/8" high strength bolts.
  7. For Stud Shear Connector Detail see BE 907.

NOTE: Fascia girders are identical to interior girders except for the intermediate stiffeners, which shall be placed on the inside face only of the fascia girders.

REVISIONS	
DELETED OPTIONAL GIRDER SPLICE	R5H 5-21-69
CURB REINFORCING REVISED	R.S.H. 7-31-69

VERMONT  
STATE HIGHWAY DEPARTMENT  
TOWN OF CASTLETON  
U.S. ROUTE 4  
TH-24 OVER U.S. RTE 4  
RELOCATION  
SUPERSTRUCTURE DETAILS

McFARLAND-JOHNSON  
CONSULTING ENGINEERS  
BINGHAMTON, NEW YORK

DESIGNED WDS CHECKED DEL DATE 3-18-68  
DRAWN LWC IN CHARGE HGC SCALE AS NOTED  
PROJECT NO. APO20160 SH. 400F-421

CONTRACT NO. BR. 906