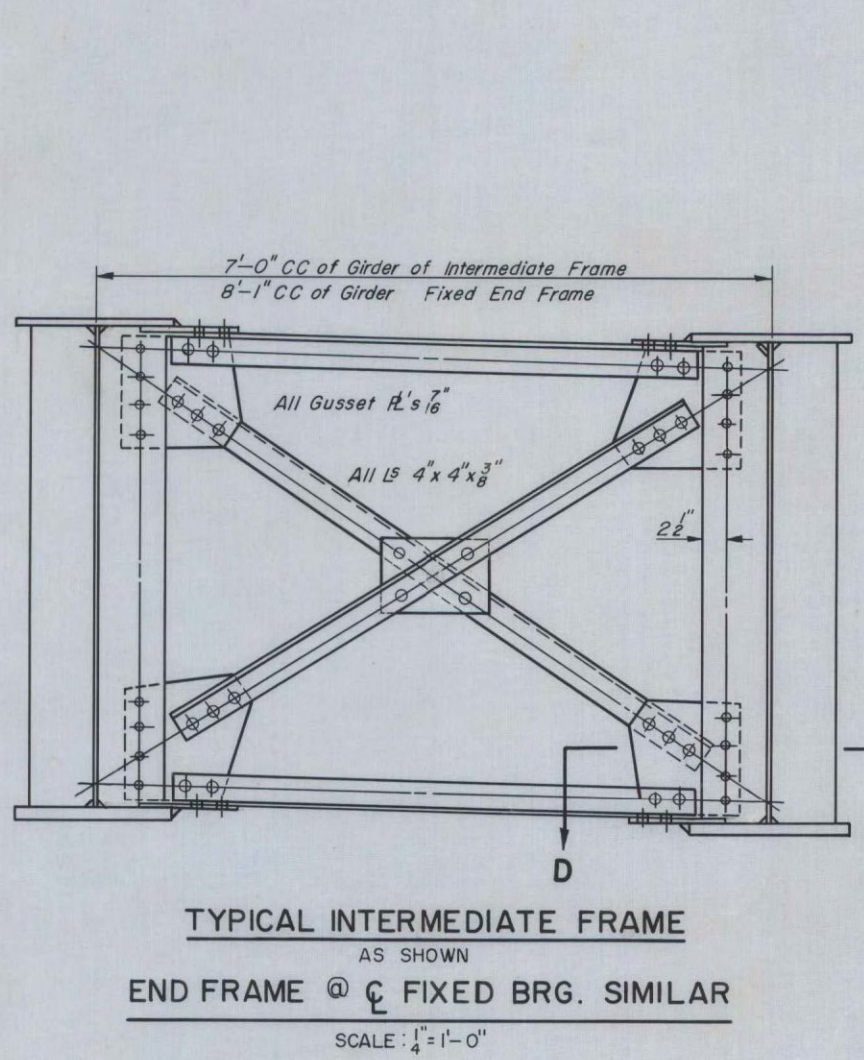
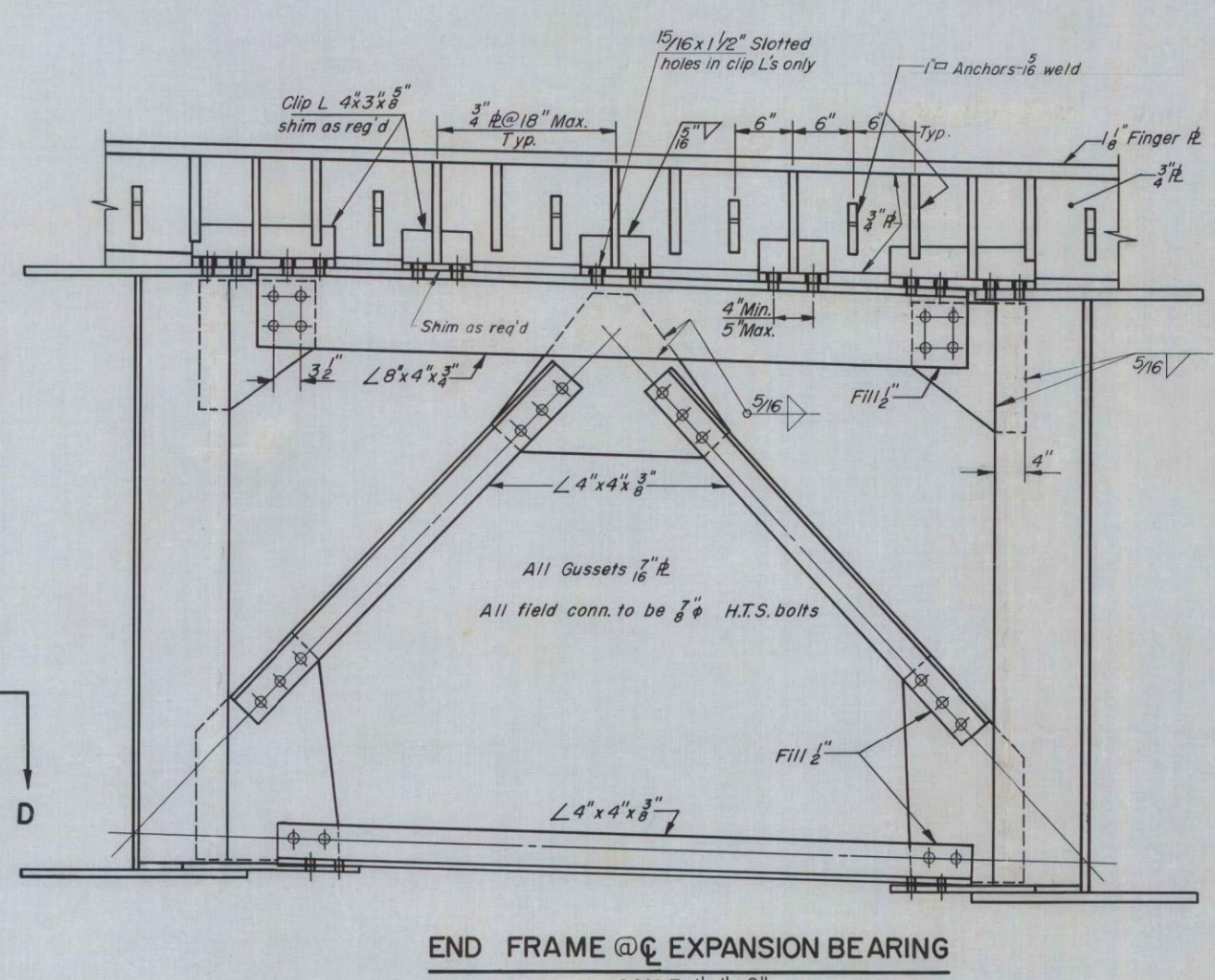


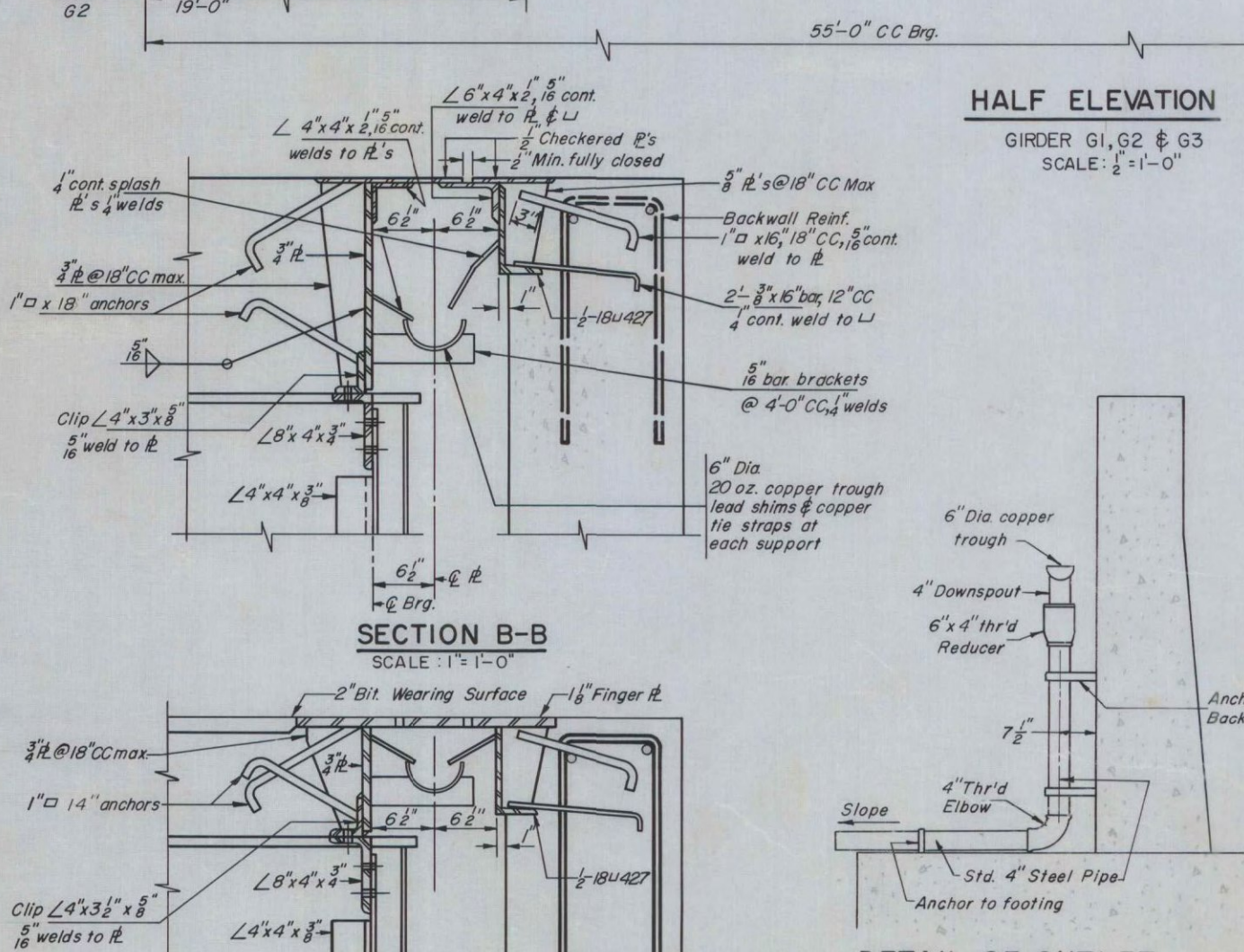
FRAMING PLAN
SCALE: 1/4" = 1'-0"



TYPICAL INTERMEDIATE FRAME
AS SHOWN
END FRAME @ C FIXED BRG. SIMILAR
SCALE: 1/2" = 1'-0"



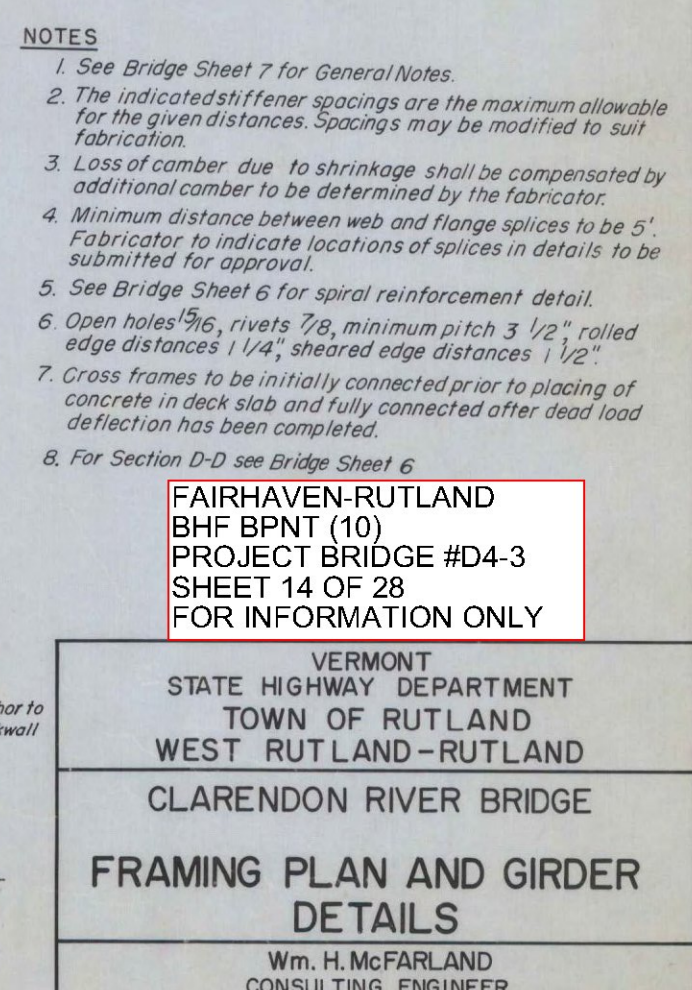
END FRAME @ C EXPANSION BEARING
SCALE: 1" = 1'-0"



SECTION A-A
SCALE: 1" = 1'-0"

SECTION B-B
SCALE: 1" = 1'-0"

HALF ELEVATION
GIRDER G1, G2 & G3
SCALE: 1/2" = 1'-0"



DETAIL OF OUTLET FOR COPPER TROUGH
NO SCALE

- NOTES**
- See Bridge Sheet 7 for General Notes.
 - The indicated stiffener spacings are the maximum allowable for the given distances. Spacings may be modified to suit fabrication.
 - Loss of camber due to shrinkage shall be compensated by additional camber to be determined by the fabricator.
 - Minimum distance between web and flange splices to be 5'. Fabricator to indicate locations of splices in details to be submitted for approval.
 - See Bridge Sheet 6 for spiral reinforcement detail.
 - Open holes 3/8" rivets 7/8", minimum pitch 3 1/2", rolled edge distances 1 1/4", sheared edge distances 1 1/2".
 - Gross frames to be initially connected prior to placing of concrete in deck slab and fully connected after dead load deflection has been completed.
 - For Section D-D see Bridge Sheet 6.

FAIRHAVEN RUTLAND
BHF BPNT (10)
PROJECT BRIDGE #D4-3
SHEET 14 OF 28
FOR INFORMATION ONLY

VERMONT
STATE HIGHWAY DEPARTMENT
TOWN OF RUTLAND
WEST RUTLAND - RUTLAND
CLARENDON RIVER BRIDGE

FRAMING PLAN AND GIRDER
DETAILS

Wm. H. McFARLAND
CONSULTING ENGINEER
BINGHAMTON, N.Y.