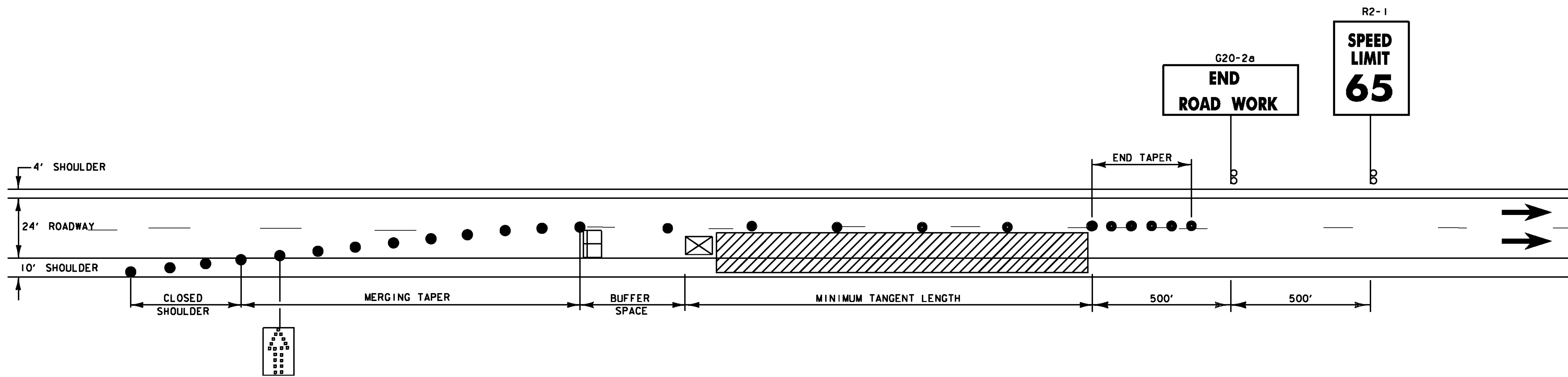


TRAFFIC CONTROL NOTES - US ROUTE 4:

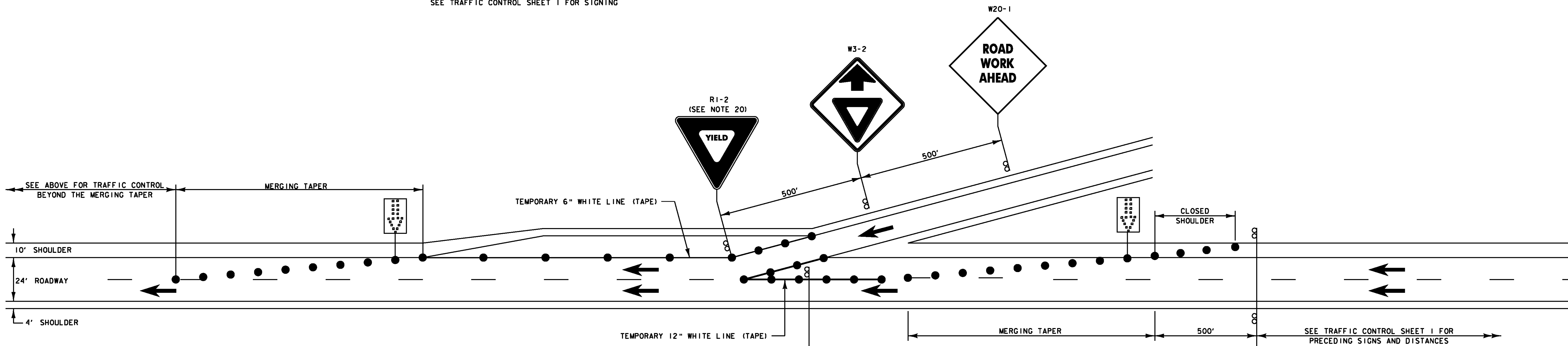
NOTES CONTINUED FROM TRAFFIC CONTROL SHEET 1:

- 18. BRIDGE 7W, RIGHT LANE CLOSED: COMPLETE MAINLINE RIGHT SHOULDER CLOSURE BEFORE EXIT RAMP TAPER TO SCOTCH HILL ROAD. BEGIN MAINLINE RIGHT LANE MERGING TAPER AT THE PHYSICAL NOSE.
- 19. BRIDGE 7W, RIGHT LANE CLOSED: PLACE SIGNS G20-5AP AND R2-1 AT END OF RIGHT SHOULDER CLOSURE ON BOTH SIDES OF THE ROADWAY. PLACE PRECEDING SIGNS AS SHOWN ON TRAFFIC CONTROL SHEET 1.
- 20. MOUNT ON TYPE III BARRICADE - MODIFIED. SEE STANDARD E-107A.



TRAFFIC CONTROL ON US ROUTE 4, RIGHT LANE CLOSED

NOT TO SCALE
SEE TRAFFIC CONTROL SHEET 1 FOR SIGNING



**TRAFFIC CONTROL ON US ROUTE 4, RIGHT LANE CLOSED
BRIDGE 9W**

NOT TO SCALE

LEGEND

- FLOW OF TRAFFIC
- WORK AREA
- REFLECTORIZED PLASTIC DRUM
- TYPE III BARRICADE
- TRUCK/TRAILER MOUNTED ATTENUATOR (OPTIONAL)
- FLASHING ARROW PANEL
- PORTABLE CHANGEABLE MESSAGE SIGN

POSTED SPEED LIMIT	TAPER LENGTHS (F T)		TANGENT W=12 FT (L/2)	MINIMUM BUFFER SPACE LENGTH (F T)	MAXIMUM CHANNELIZING DEVICE SPACING (F T)	
	SHOULDER W=10 FT	MERGING 12 FT LANE			TAPER	TANGENT
40	90	320	160	305	40	80
45	150	540	270	360	45	90
50	170	600	300	425	50	100
55	185	660	330	495	55	110
60	200	720	360	570	60	120
65	215	780	390	645	65	130

TAPER RATES ARE DETERMINED USING THE FOLLOWING EQUATIONS:
 $L = WS$ FOR POSTED SPEEDS OF 45 MPH OR GREATER
 $L = WS^2/60$ FOR POSTED SPEEDS OF 40 MPH OR LESS

L = MINIMUM LENGTH OF TAPER
 W = WIDTH OF OFFSET IN FEET
 S = POSTED SPEED IN MPH



TRAFFIC CONTROL SHEET (2)

PROJECT NAME: FAIR HAVEN - RUTLAND
 PROJECT NUMBER: BHF BPNT (10)

FILE NAME: I0b182/str/z10b182tc.dgn PLOT DATE: 24-JAN-2012
 PROJECT LEADER: G.K.DONINGTON DRAWN BY: W.GERHOLD
 DESIGNED BY: C.CARNEY CHECKED BY: R.BENJAMIN
 tc_2.dgn SHEET 10 OF 28