

REMOVE EXISTING REMAINING PLASTIC DRAINAGE TROUGH

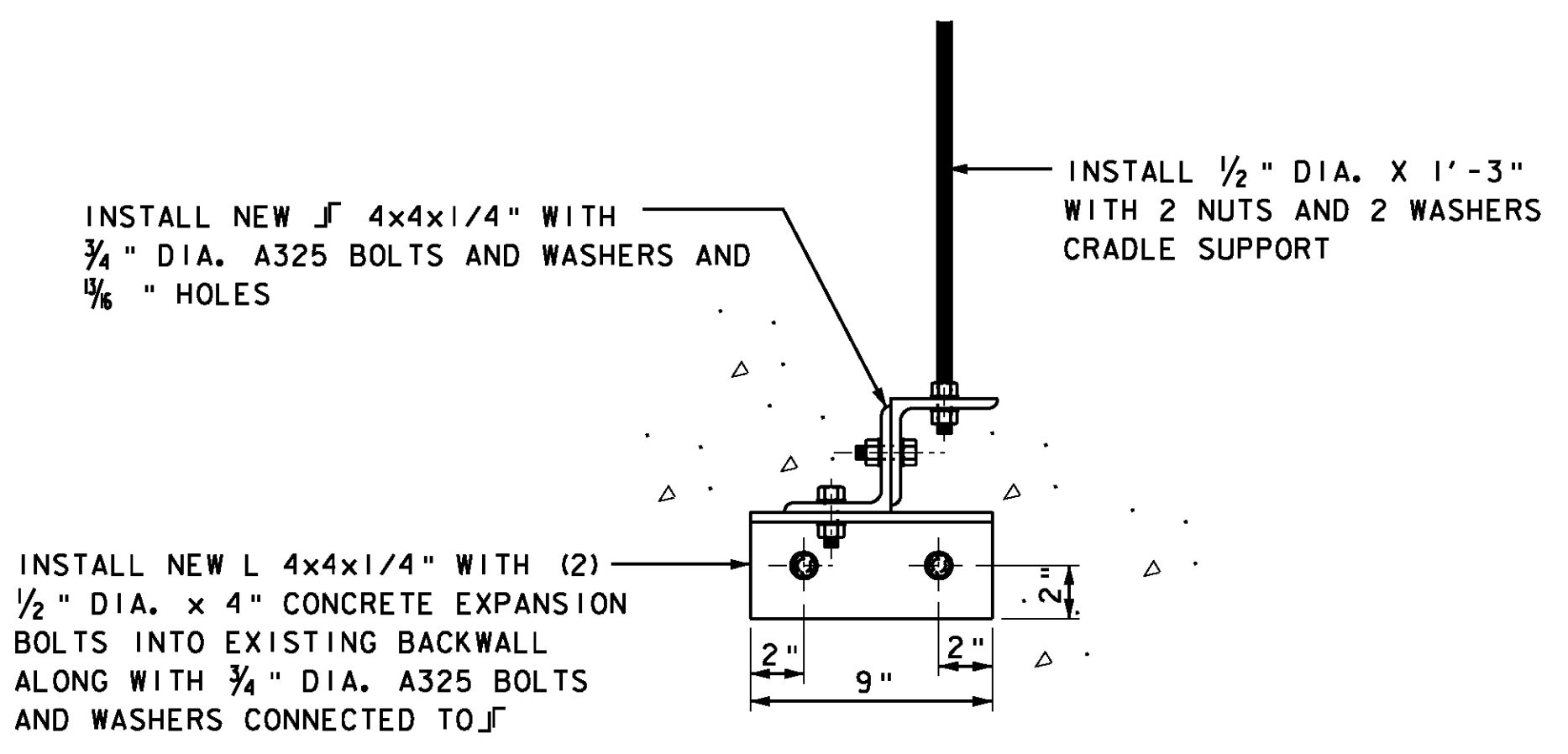
SEE DIAPER DRAIN DETAILS AND DIAPER DRAIN REPAIR NOTES ON SHEET 3 OF 28, CRADLE SUPPORT LENGTH TO BE ADJUSTED PER SECTION A-A

INSTALL NEW L 4x4x1/4" WITH (2) 1/2" DIA. x 4" CONCRETE EXPANSION BOLTS AND WASHERS INTO EXISTING BACKWALL ALONG WITH 3/4" DIA. A325 BOLTS AND WASHERS CONNECTED TO J

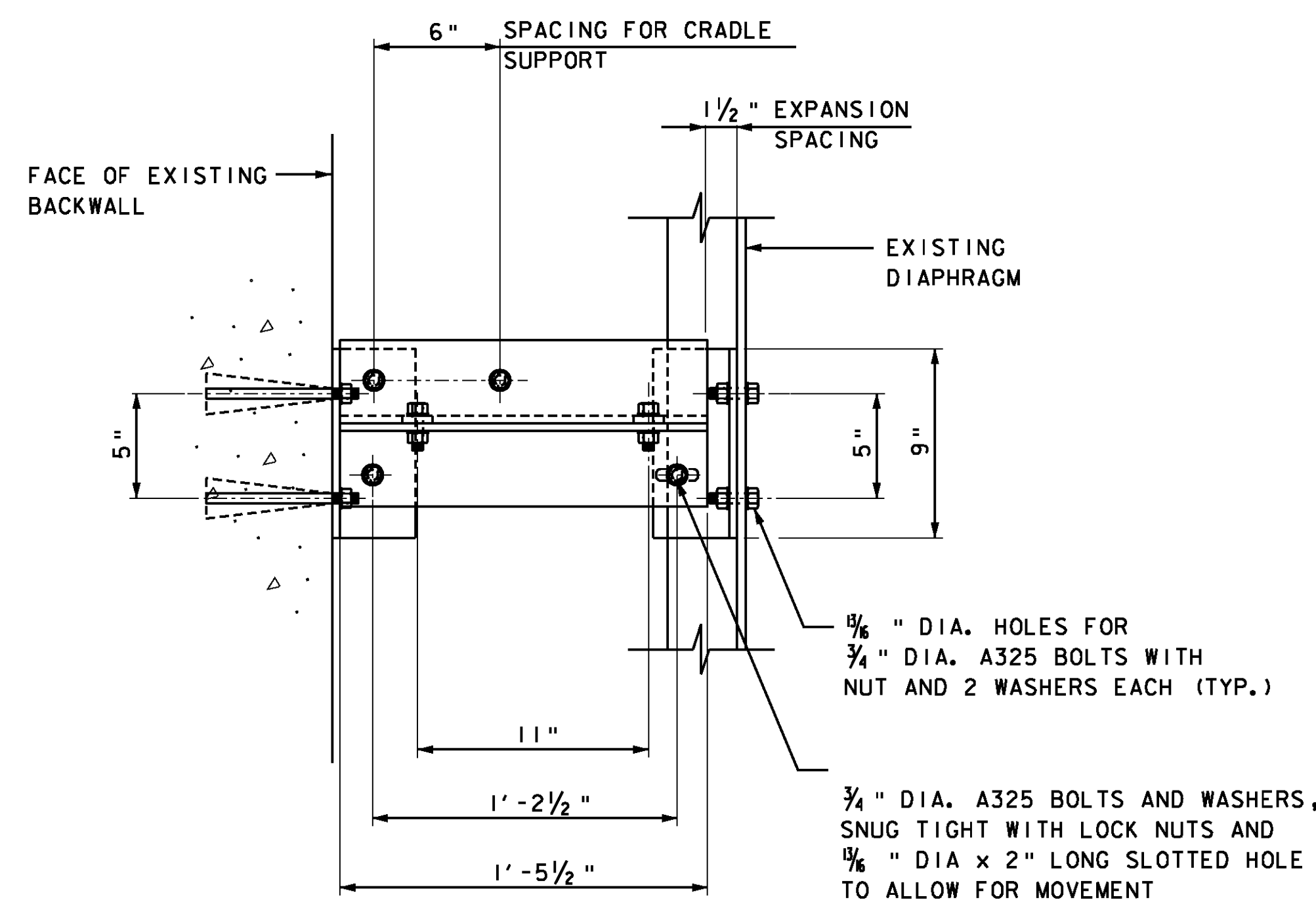
INSTALL NEW J 4x4x1/4" WITH 3/4" DIA. A325 BOLTS AND WASHERS, AND 1/8" HOLES

INSTALL NEW L 4x4x1/4" WITH 3/4" DIA. A325 BOLTS AND WASHERS INTO EXISTING DIAPHRAGM

DRAINAGE TROUGH REPLACEMENT DETAIL
(FOR BRIDGES 5E, 5W, 7E, AND 7W)
SCALE: 2" = 1'-0"



SECTION A-A
SCALE: 2" = 1'-0"



SECTION B-B
SCALE: 2" = 1'-0"

NOTES:

1. ALL EXISTING DIMENSIONS SHALL BE FIELD VERIFIED.
2. BOLT HOLES SHALL HAVE A MINIMUM EDGE DISTANCE OF 1 1/2".

DIAPER DRAIN NOTES

1. TROUGH SUPPORT BRACKETS SHALL NOT BE WELDED TO GIRDER WEB.
2. STRUCTURAL STEEL TUBING SHALL CONFORM TO ASTM-A500 OR ASTM-A501 AND SHALL BE GALVANIZED IN ACCORDANCE WITH ASTM A-123 AFTER FABRICATION. ALL PLATES, BARS AND ANGLES SHALL CONFORM TO ASTM A-36 AND SHALL ALSO BE GALVANIZED IN ACCORDANCE WITH ASTM-123 AFTER FABRICATION. CRADLE ASSEMBLIES SHALL CONSIST OF THREADED RODS (ASTM A568, CLASS 4.6), NUTS (ASTM A563), AND WASHERS (ASTM F486), FINISH TO BE HOT-DIP ZINC COATING (ASTM A153).
3. THE 1 1/4" (NOMINAL DIAMETER) GALVANIZED STEEL PIPE, PREFORMED FABRIC MATERIAL, CRADLES AND RELATED HARDWARE, TAP SCREWS, CUTTING OF THE EXISTING STRUCTURAL STEEL AS REQUIRED, REMOVAL AND DISPOSAL OF THE EXISTING DRAIN TROUGH SYSTEM AND FLUSHING OF ALL PIER CAPS SHALL BE PAID UNDER ITEM 506.75, STRUCTURAL STEEL.
4. THESE DETAILS ARE ILLUSTRATED AS AN EXAMPLE. CONTRACTOR TO SUBMIT SHOP DRAWINGS FOR APPROVAL.

**PROJECT STANDARD
DETAILS SHEET (3)**

PROJECT NAME: FAIR HAVEN - RUTLAND	PLOT DATE: 24-JAN-2012
PROJECT NUMBER: BHF BPNT (10)	DRAWN BY: W.GERHOLD
FILE NAME: i0b182/str/z10b182det.dgn	CHECKED BY: D.SARGENT
PROJECT LEADER: G.K.DONINGTON	SHEET 5 OF 28
DESIGNED BY: A.STOCKIN	
det_4.dgn	

