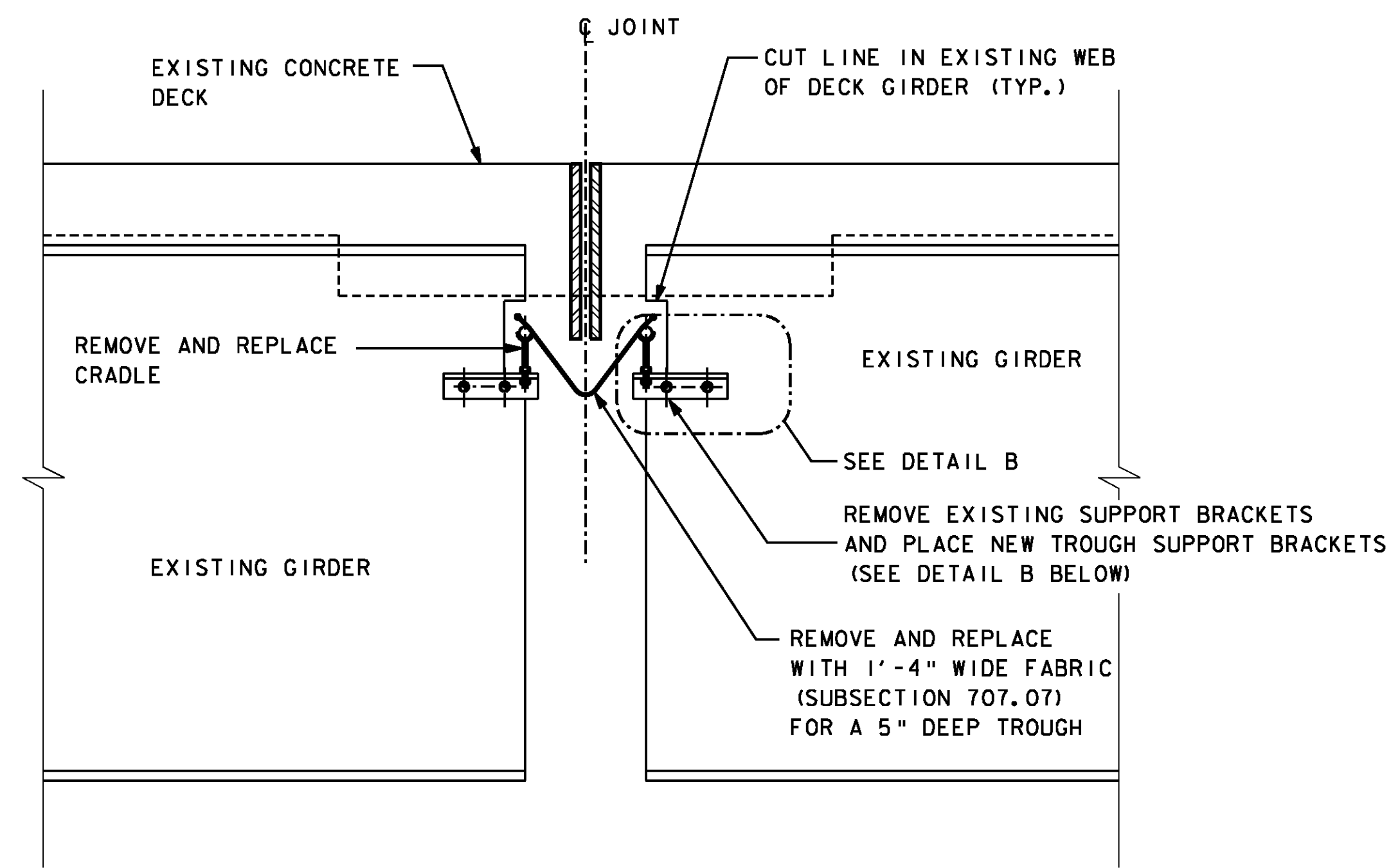
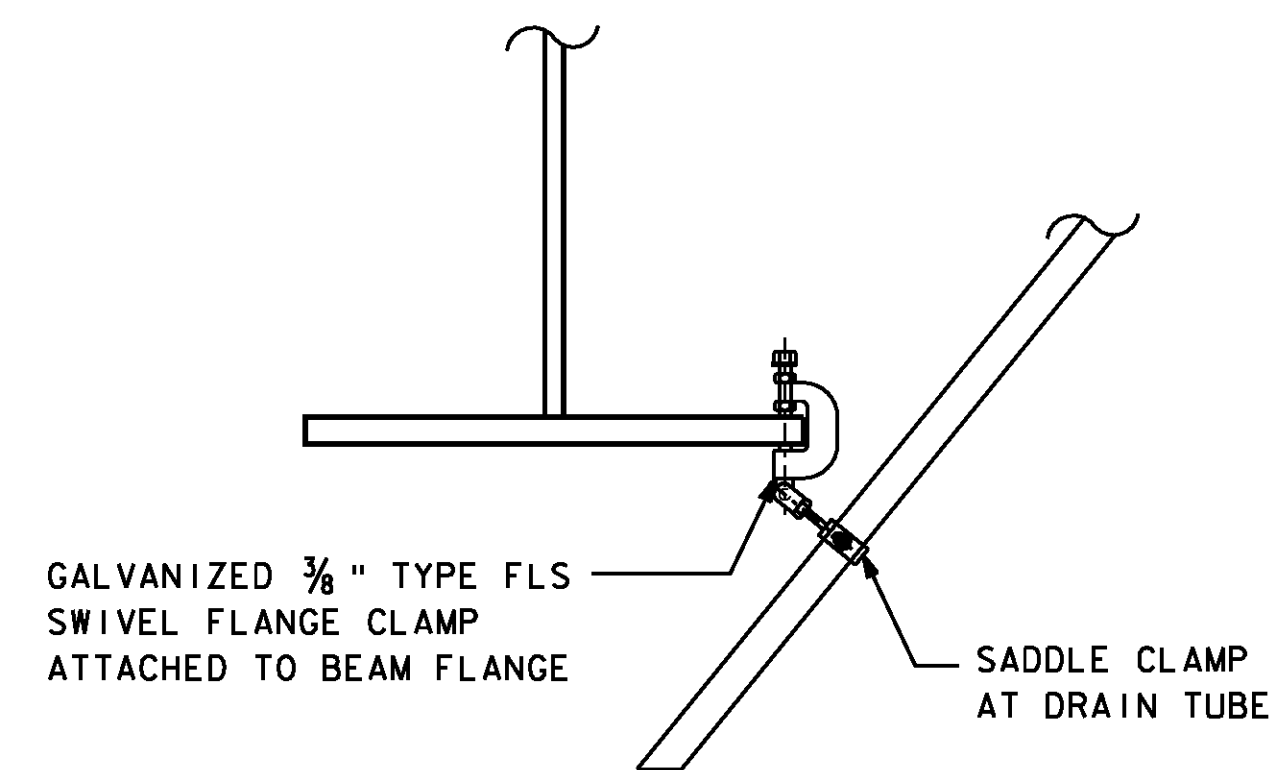


**DRAIN TUBE EXTENSION DETAIL**  
NOT TO SCALE



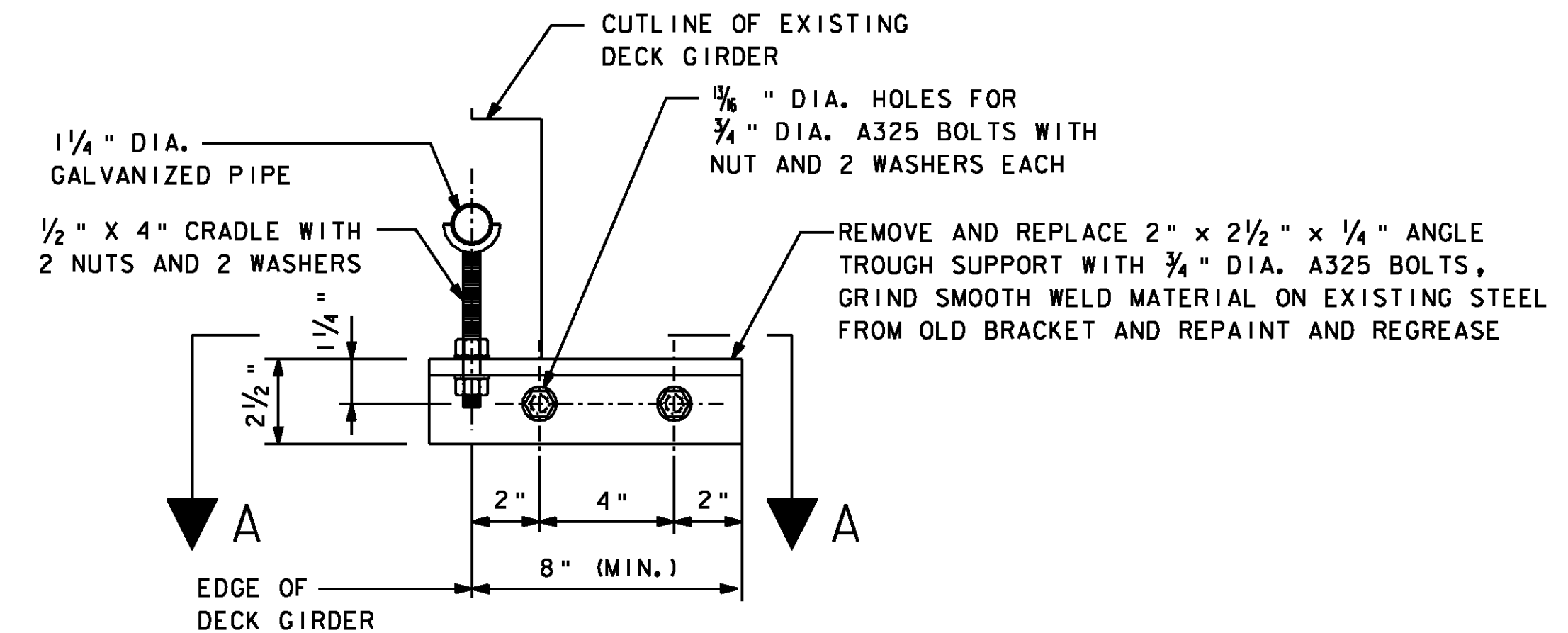
**TYPICAL SECTION AT EXISTING DIAPER DRAIN**  
SCALE: 1" = 1'-0"



**DETAIL A**  
NOT TO SCALE

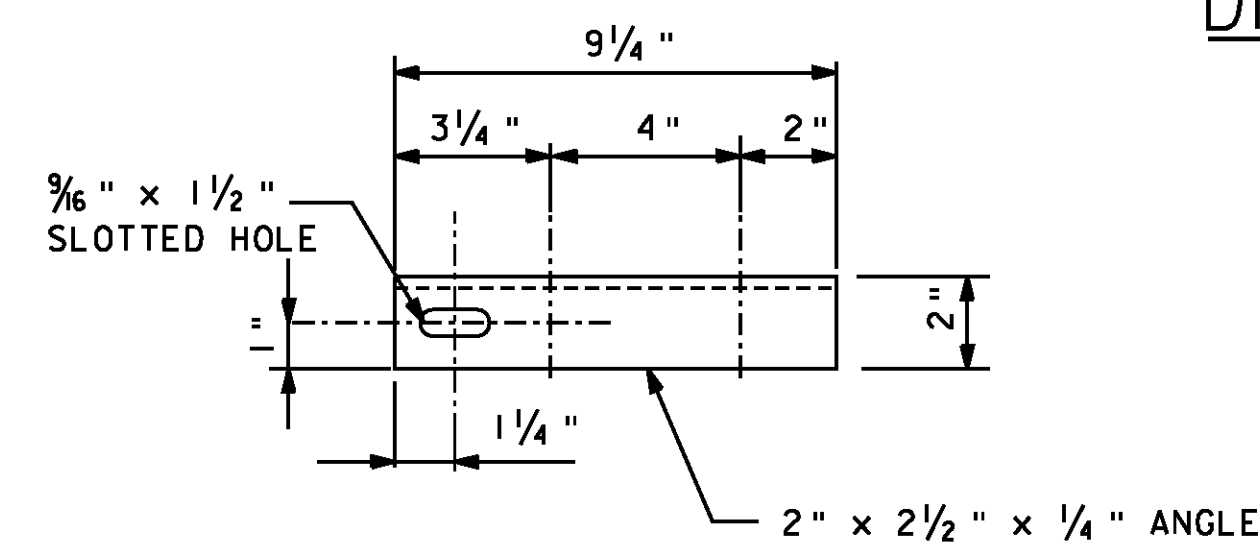
NOTES:

- IF EXISTING DRAIN TUBE IS TOO SHORT TO PROVIDE ADEQUATE CONNECTION, THE CONTRACTOR SHALL COMPLETELY FILL THE TUBE WITH POLYURETHANE SEALANT CONFORMING TO SUBSECTION 707.05. TUBES TO BE FILLED WITH POLYURETHANE SEALANT SHALL BE APPROVED BY THE ENGINEER PRIOR TO BEING FILLED.



**DETAIL B**  
3" = 1'-0"

**DIAPER DRAIN REPAIR DETAILS**



**TROUGH SUPPORT BRACKET DETAIL A**  
**PLAN VIEW**  
3" = 1'-0"

**DIAPER DRAIN REPAIR NOTES:**

- TROUGH SUPPORT BRACKETS SHALL NOT BE WELDED TO GIRDER WEB.
- STRUCTURAL STEEL TUBING SHALL CONFORM TO ASTM-A500 OR ASTM-A501 AND SHALL BE GALVANIZED IN ACCORDANCE WITH ASTM A-123 AFTER FABRICATION. ALL PLATES, BARS AND ANGLES SHALL CONFORM TO ASTM A-36 AND SHALL ALSO BE GALVANIZED IN ACCORDANCE WITH ASTM-123 AFTER FABRICATION. CRADLE ASSEMBLIES SHALL CONSIST OF THREADED RODS (ASTM A568, CLASS 4.6), NUTS (ASTM A563), AND WASHERS (ASTM F486), FINISH TO BE HOT-DIP ZINC COATING (ASTM A153).
- THE 1/4" (NOMINAL DIAMETER) GALVANIZED STEEL PIPE, PREFORMED FABRIC MATERIAL, CRADLES AND RELATED HARDWARE, TAP SCREWS, CUTTING OF THE EXISTING STRUCTURAL STEEL AS REQUIRED, REMOVAL AND DISPOSAL OF THE EXISTING DRAIN TROUGH SYSTEM AND FLUSHING OF ALL PIER CAPS SHALL BE PAID UNDER ITEM 506.75, STRUCTURAL STEEL.
- THESE DETAILS ARE ILLUSTRATED AS AN EXAMPLE. CONTRACTOR TO SUBMIT FABRICATION DRAWINGS FOR APPROVAL.

**PROJECT STANDARD  
DETAILS SHEET (1)**

PROJECT NAME: FAIR HAVEN - RUTLAND  
PROJECT NUMBER: BHF BPNT (10)

FILE NAME: i0b182/str/z10b182det.dgn PLOT DATE: 24-JAN-2012  
PROJECT LEADER: G.K.DONINGTON DRAWN BY: W.GERHOLD  
DESIGNED BY: A.STOCKIN CHECKED BY: D.SARGENT  
det\_2.dgn SHEET 3 OF 28

