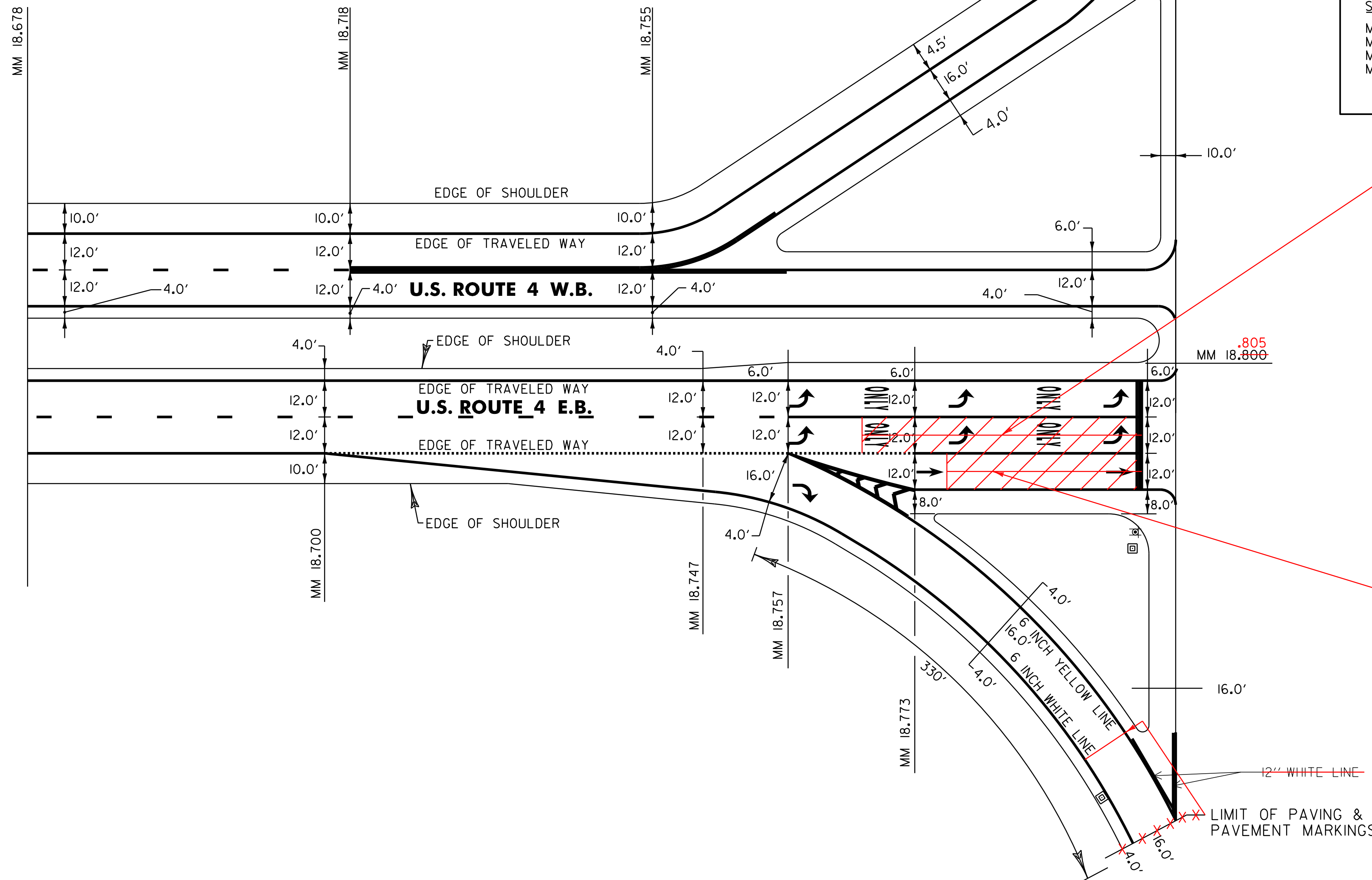


U.S. ROUTE 4 E.B. & W.B.
MM 18,805
END NH SURF(22)

LIMIT OF PAVING &
PAVEMENT MARKINGS



PAVEMENT MARKINGS—WEST BOUND

646.215 6 INCH YELLOW LINE

MM 18,678 - MM 18,805 SOLID LINE 12.0' RT
MM 18,718 - MM 18,805 SOLID LINE (ON-RAMP)

646.630 TEMPORARY 6 INCH YELLOW LINE

MM 18,678 - MM 18,805 SOLID LINE 12.0' RT
MM 18,718 - MM 18,805 SOLID LINE (ON-RAMP)

646.24 12 INCH WHITE LINE

MM 18,718 - MM 18,755 C (GORE STRIPING)
MM 18,755 - MM 18,805 C & LT (GORE STRIPING)

646.660 TEMPORARY 12 INCH WHITE LINE

MM 18,718 - MM 18,755 C (GORE STRIPING)
MM 18,755 - MM 18,805 C & LT (GORE STRIPING)

646.214 6 INCH WHITE LINE

S=SOLID, D=DASHED

MM	MM	LT	C	RT
MM 18,678	- MM 18,718	S	D	-
MM 18,678	- MM 18,755	S	D	-
MM 18,755	- MM 18,805	SOLID LINE	-	(ON-RAMP)
MM 18,765	- MM 18,805	-	S	-

646.620 TEMPORARY 6 INCH WHITE LINE

S=SOLID, D=DASHED

MM	MM	LT	C	RT
MM 18,678	- MM 18,718	S	D	-
MM 18,678	- MM 18,755	S	D	-
MM 18,755	- MM 18,805	SOLID LINE	-	(ON-RAMP)
MM 18,765	- MM 18,805	-	S	-

PAVEMENT MARKINGS—EAST BOUND

646.215 6 INCH YELLOW LINE

MM 18,678 - MM 18,805 SOLID LINE LT
MM 18,773 - MM 18,805 SOLID LINE (OFF-RAMP)

646.630 TEMPORARY 6 INCH YELLOW LINE

MM 18,678 - MM 18,805 SOLID LINE LT
MM 18,773 - MM 18,805 SOLID LINE (OFF-RAMP)

646.26 24 INCH STOP BAR

MM 18,800

646.680 TEMPORARY 24 INCH STOP BAR

MM 18,800

646.30 LETTER OR SYMBOL

MM 18,758	LT, ARROW	(1EA)
MM 18,758	RT, ARROW	(2 EA)
MM 18,773	RT, ARROW	(1EA)
MM 18,775	LT, "O,N,L,Y"	(4 EA)
MM 18,775	RT, "O,N,L,Y"	(4 EA)
MM 18,783	LT, ARROW	(1EA)
MM 18,783	RT, ARROW	(1EA)
MM 18,791	LT, "O,N,L,Y"	(4 EA)
MM 18,791	RT, "O,N,L,Y"	(4 EA)
MM 18,799	RT, ARROW	(1EA)
MM 18,799	LT, ARROW	(1EA)
MM 18,799	RT, ARROW	(1EA)

646.690 TEMPORARY LETTER OR SYMBOL

MM 18,758	LT, ARROW	(1EA)
MM 18,758	RT, ARROW	(2 EA)
MM 18,773	RT, ARROW	(1EA)
MM 18,783	LT, ARROW	(1EA)
MM 18,783	RT, ARROW	(1EA)
MM 18,798	RT, ARROW	(1EA)
MM 18,799	LT, ARROW	(1EA)
MM 18,799	RT, ARROW	(1EA)

646.214 6 INCH WHITE LINE

MM 18,678	- MM 18,757	DASHED C
MM 18,768	- MM 18,700	SOLID LINE 3.6 m RT
MM 18,700	- MM 18,773	DOTTED LINE 3.6 m RT
MM 18,700	- MM 18,805	SOLID LINE (OFF-RAMP)
MM 18,757	- MM 18,801	SOLID C
MM 18,773	- MM 18,801	SOLID LINE 3.6 m RT
MM 18,773	- MM 18,804	SOLID LINE 7.2 m RT

646.620 TEMPORARY 6 INCH WHITE LINE

MM 18,678	- MM 18,757	DASHED C
MM 18,678	- MM 18,700	SOLID LINE 3.6 m RT
MM 18,700	- MM 18,773	DOTTED LINE 3.6 m RT
MM 18,700	- MM 18,805	SOLID LINE (OFF-RAMP)
MM 18,757	- MM 18,801	SOLID C
MM 18,773	- MM 18,801	SOLID LINE 3.6 m RT
MM 18,773	- MM 18,804	SOLID LINE 7.2 m RT

646.24 12 INCH WHITE LINE

MM 18,757	- MM 18,773	GORE LINES RT
MM 18,757	- MM 18,773	GORE HATCHING
MM 18,800	- MM 18,804	GORE LINES RT

646.660 TEMPORARY 12 INCH WHITE LINE

MM 18,757	- MM 18,773	GORE LINES RT
MM 18,757	- MM 18,773	GORE HATCHING
MM 18,800	- MM 18,804	GORE LINES RT

MILLED CENTER LANE BACK 140 LF (FM)
AND REPLACED WITH TYPE III MARSHALL
BITUMINOUS CONCRETE PAVEMENT

MILLED RIGHT LANE BACK 70 LF (FM)
AND REPLACED WITH TYPE III MARSHALL
BITUMINOUS CONCRETE PAVEMENT

NOT TO SCALE

**US 7
INTERCHANGE
PAVEMENT
MARKING
DETAIL SHEET**

PROJECT NAME: FAIR HAVEN-RUTLAND TOWN

PROJECT NUMBER: NH SURF(22)

FILE NAME: IOBIO6/IOBIO6.DGN

PROJECT LEADER: M. FOWLER

DESIGNED BY: PVT. MGT.

IOBIO6*17.1

PLOT DATE: 31-MAY-2013 11:55

DRAWN BY: PVT. MGT.

CHECKED BY: PVT. MGT.

SHEET 17 OF 24