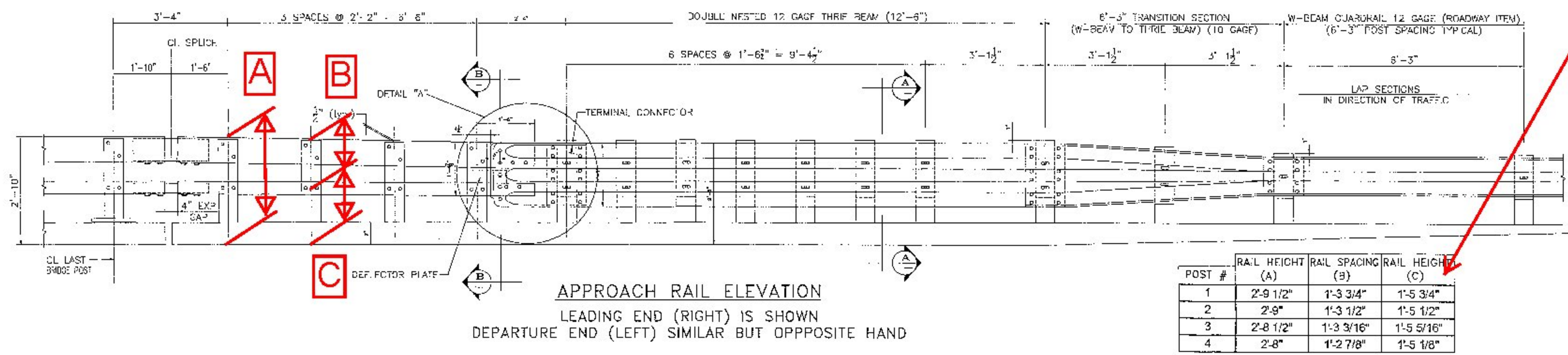
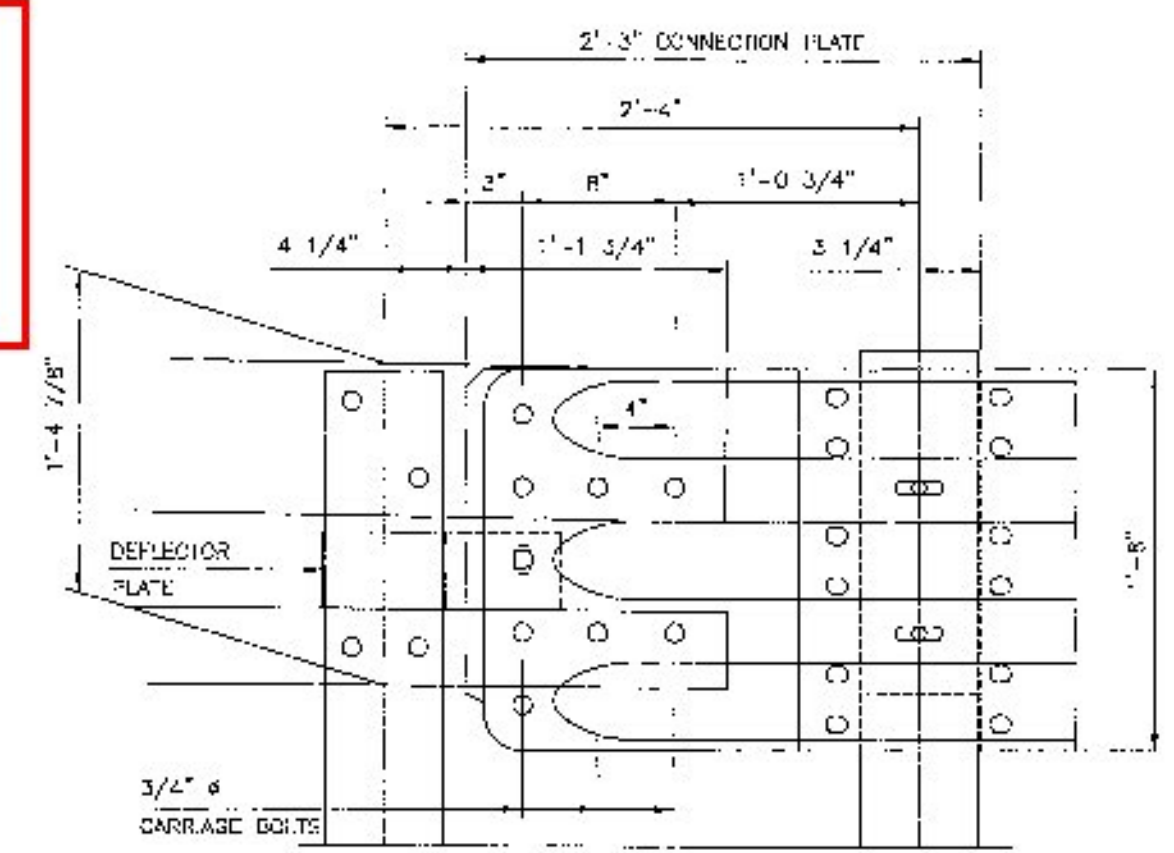


- NOTES:
1. PAYMENT FOR GUARDRAIL APPROACH SECTION - GALVANIZED 2 RAIL, SHALL INCLUDE THE TERMINAL CONNECTOR, THE CONNECTION PLATE, THE DEFLECTOR PLATE, RAIL, POSTS, BLOCKS AND ATTACHMENT HARDWARE.
  2. ALL APPROACH RAIL SPICES SHALL BE LAPPED IN THE DIRECTION OF TRAFFIC FLOW.
  3. TUBE AND STEEL POST MATERIALS, DIMENSION SIZES AND NOTES SHALL BE THE SAME AS THOSE OF THE BRIDGE RAIL UNLESS OTHERWISE NOTED.
  4. APPROACH RAIL BOLTS SHALL BE ASTM A307 GRADE A AND NUTS SHALL BE AASHTO M291 (ASTM 563 GRADE A OR BETTER (GALVANIZED)). WASHERS SHALL BE ASTM F844.
  5. WELD TOP SPICE BAR TO FIT BEND. USE COMPLETE PENETRATION WELD (B-U2).

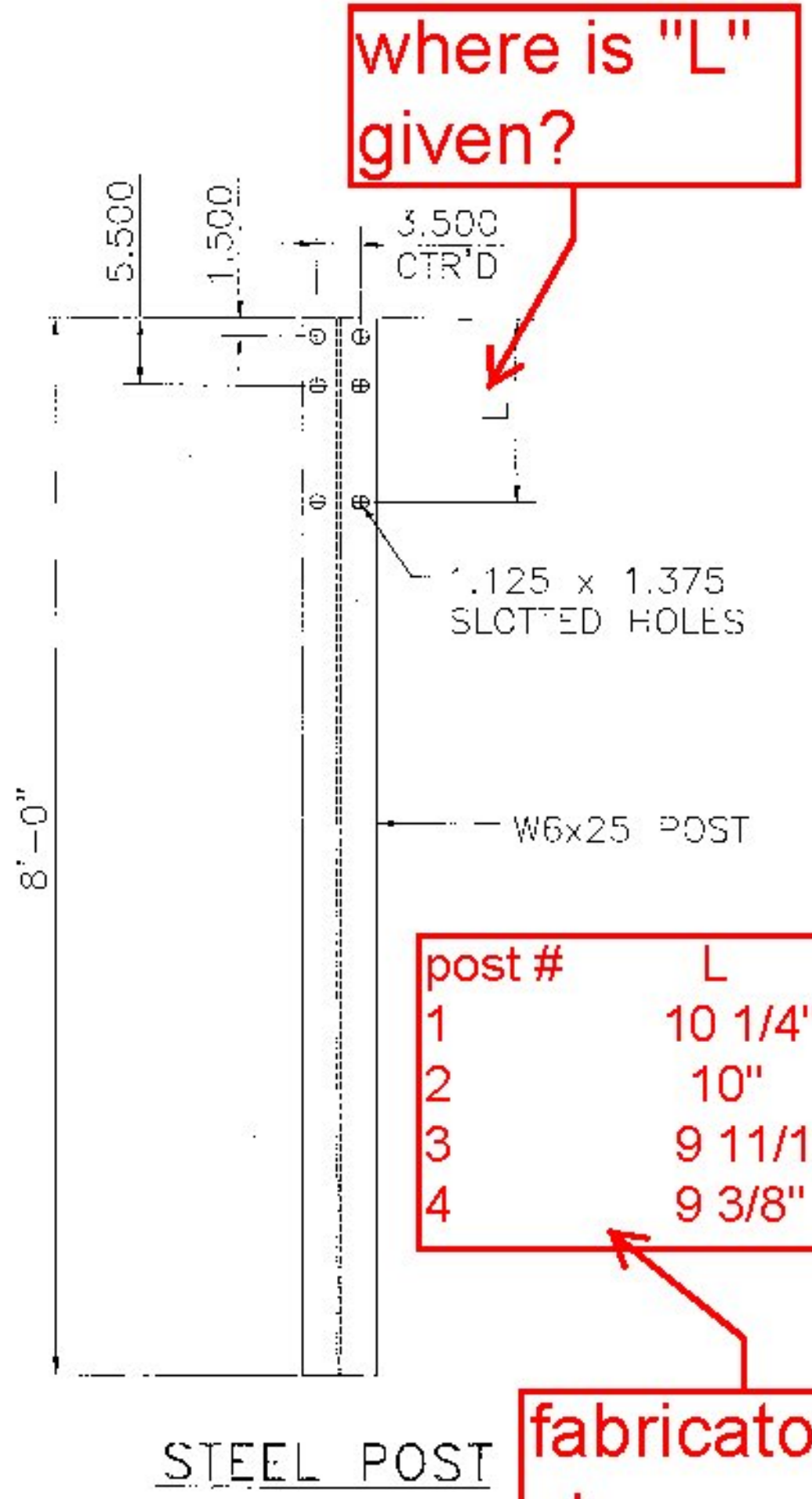


where are "A", "B" and "C" shown?



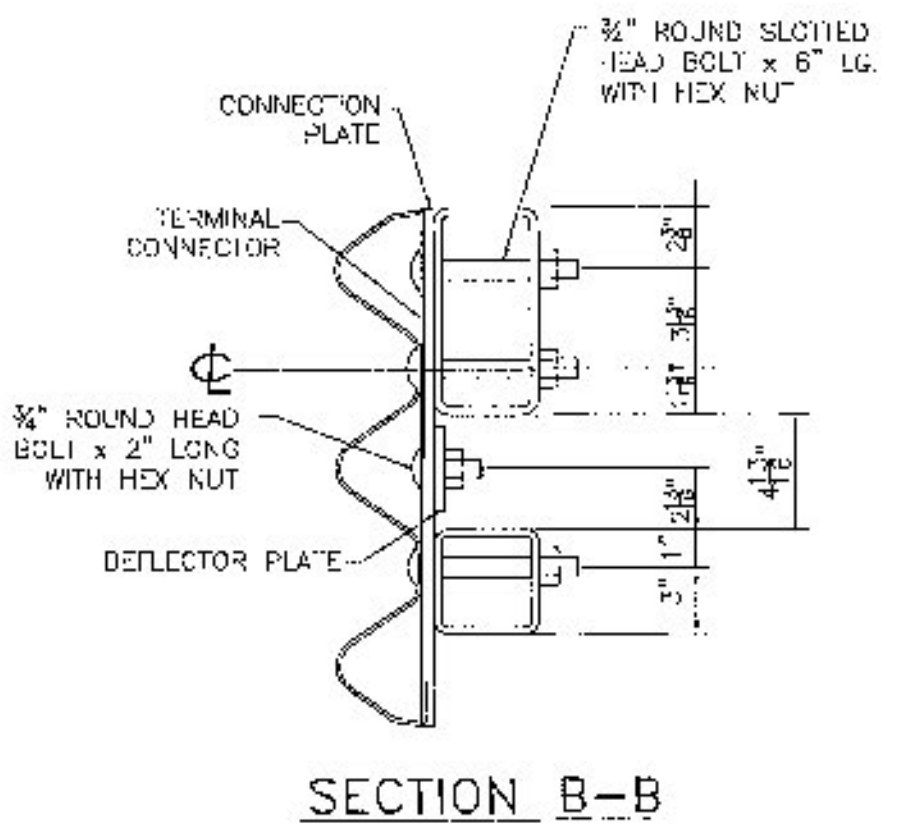
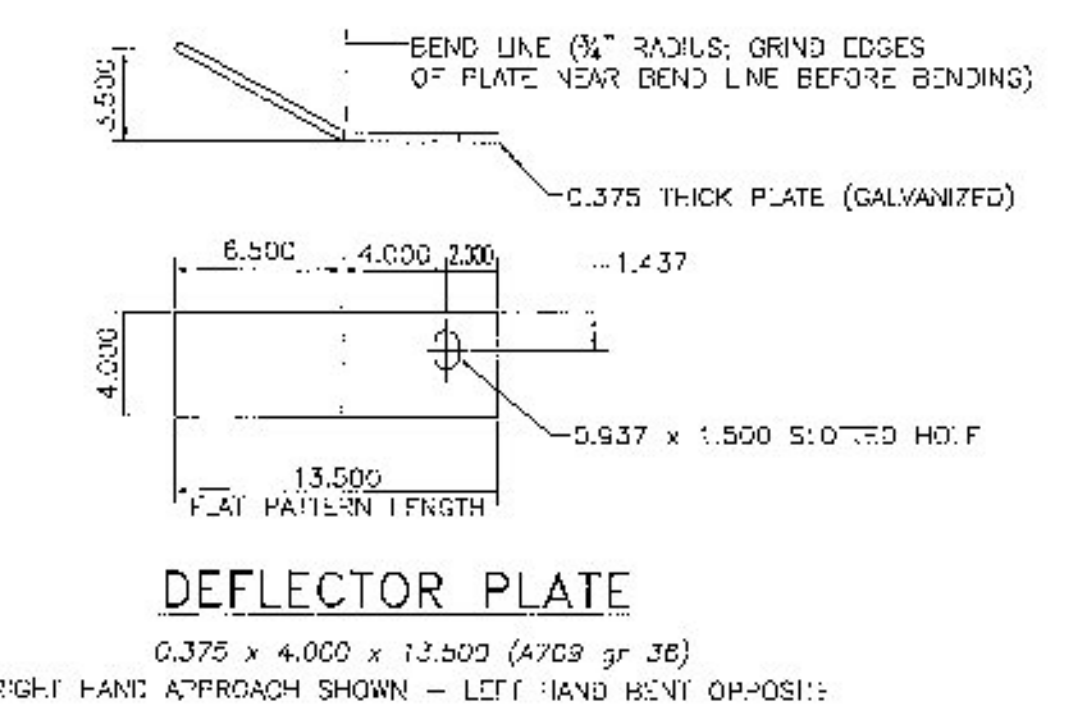
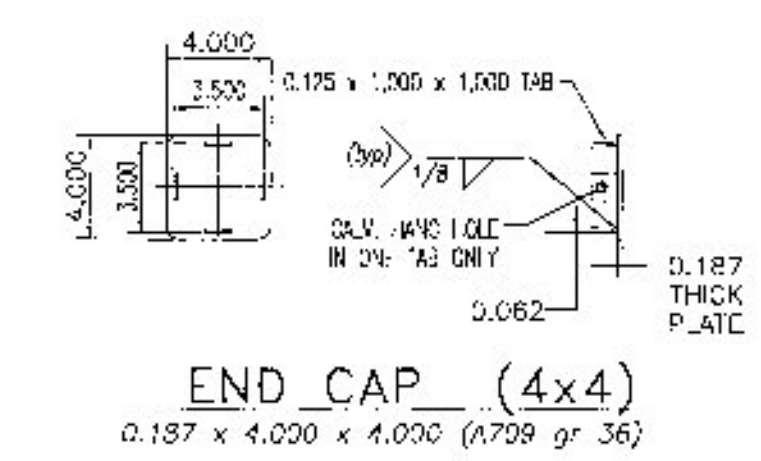
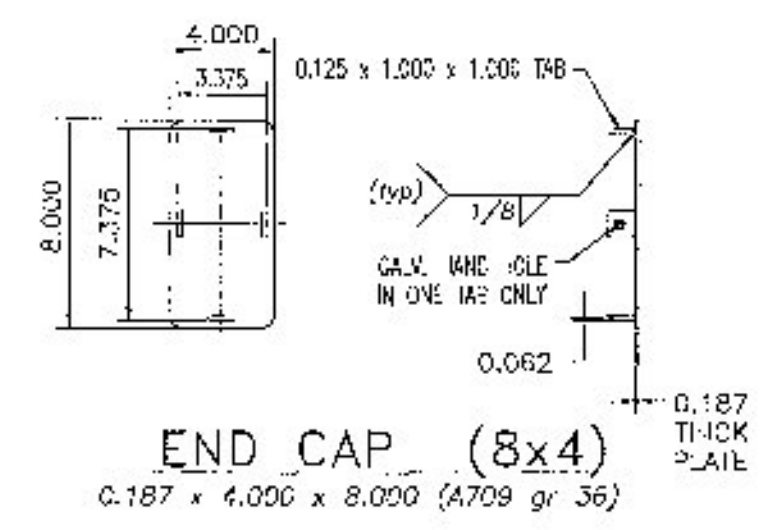
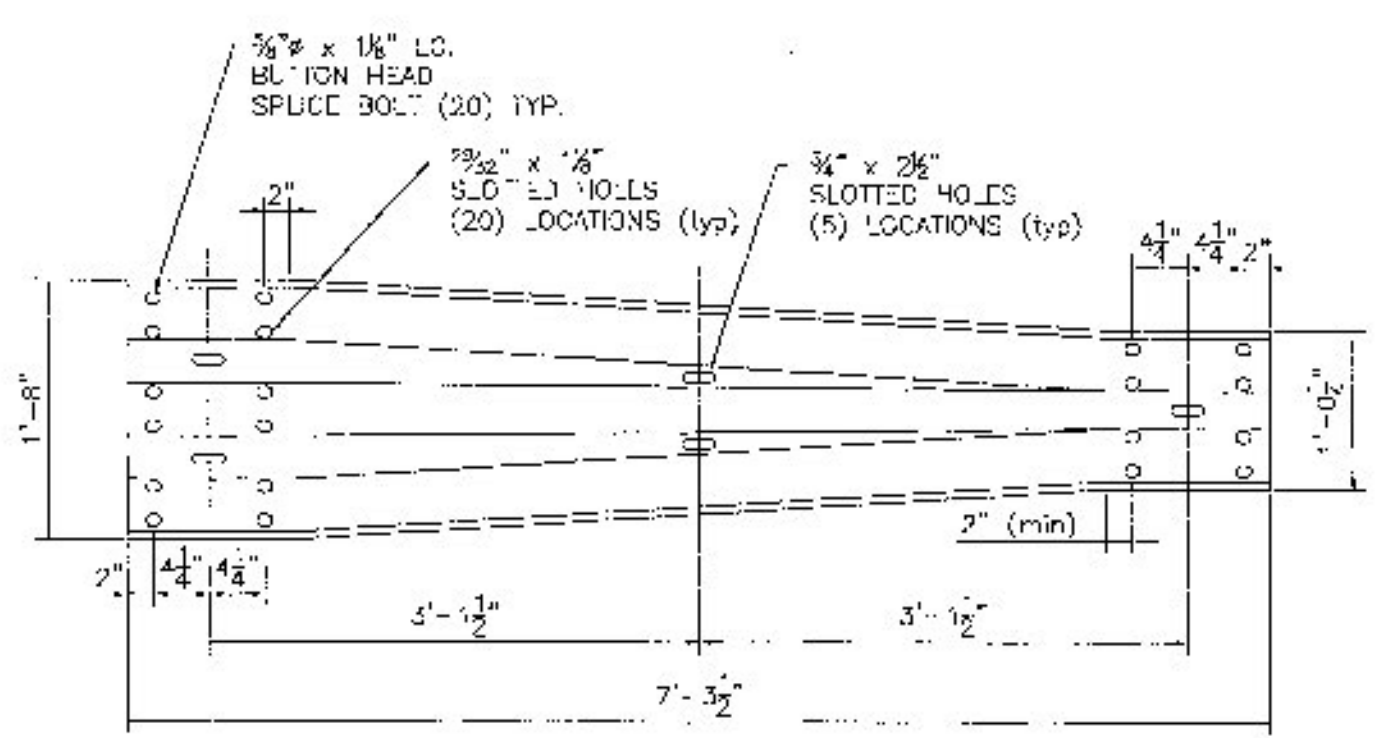
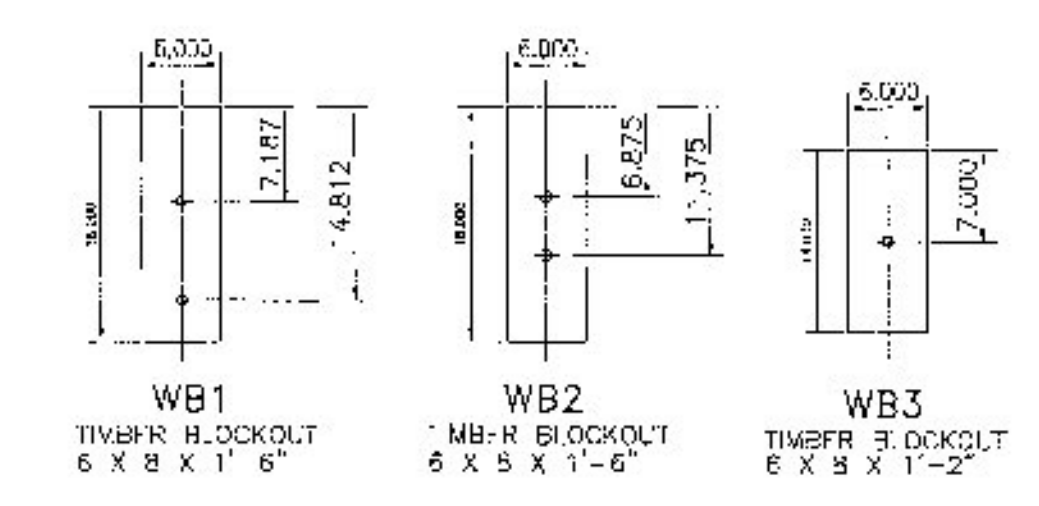
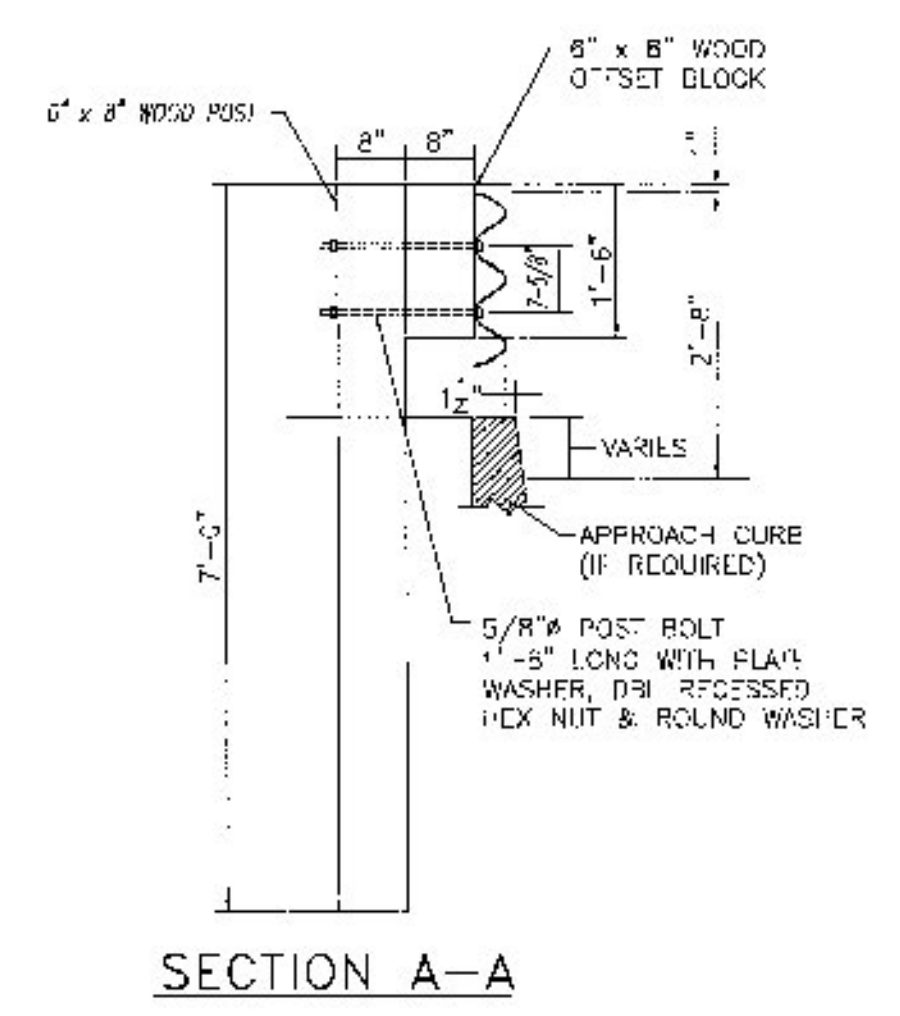
POST #	RAIL HEIGHT (A)	RAIL SPACING (B)	RAIL HEIGHT (C)
1	2'-9 1/2"	1'-3 3/4"	1'-5 3/4"
2	2'-9"	1'-3 1/2"	1'-5 1/2"
3	2'-8 1/2"	1'-3 3/16"	1'-5 5/16"
4	2'-8"	1'-2 7/8"	1'-5 1/8"

where is "L" given?



post #	L
1	10 1/4"
2	10"
3	9 11/16"
4	9 3/8"

fabricator, please verify



Vermont Agency of Transportation  
**RECEIVED**  
CK'D BY MEM OK'D BY CWC  
Apr. 16, 2015  
RESUBMIT APPROVED AS NOTED  
BY C. Carlson DATE 05-06-2015

**HIGHWAY SAFETY CORP**  
GLASTONBURY, CT  
860-633-9445  
ITEM 525.33 2-RAIL BRIDGE RAIL GALVANIZED  
BRIDGE REHABILITATION  
RT. 116 OVER LITTLE CREEK  
B.I.N. #6 P.I.N. BR 021-1 (29)  
TOWN OF BRISTOL, ADDISON COUNTY  
CERTIFIED FABRICATOR  
Dwg. No. 2040  
3 of 4  
LAFAYETTE  
DATE 04-15-15 SCALE NONE SIZE D