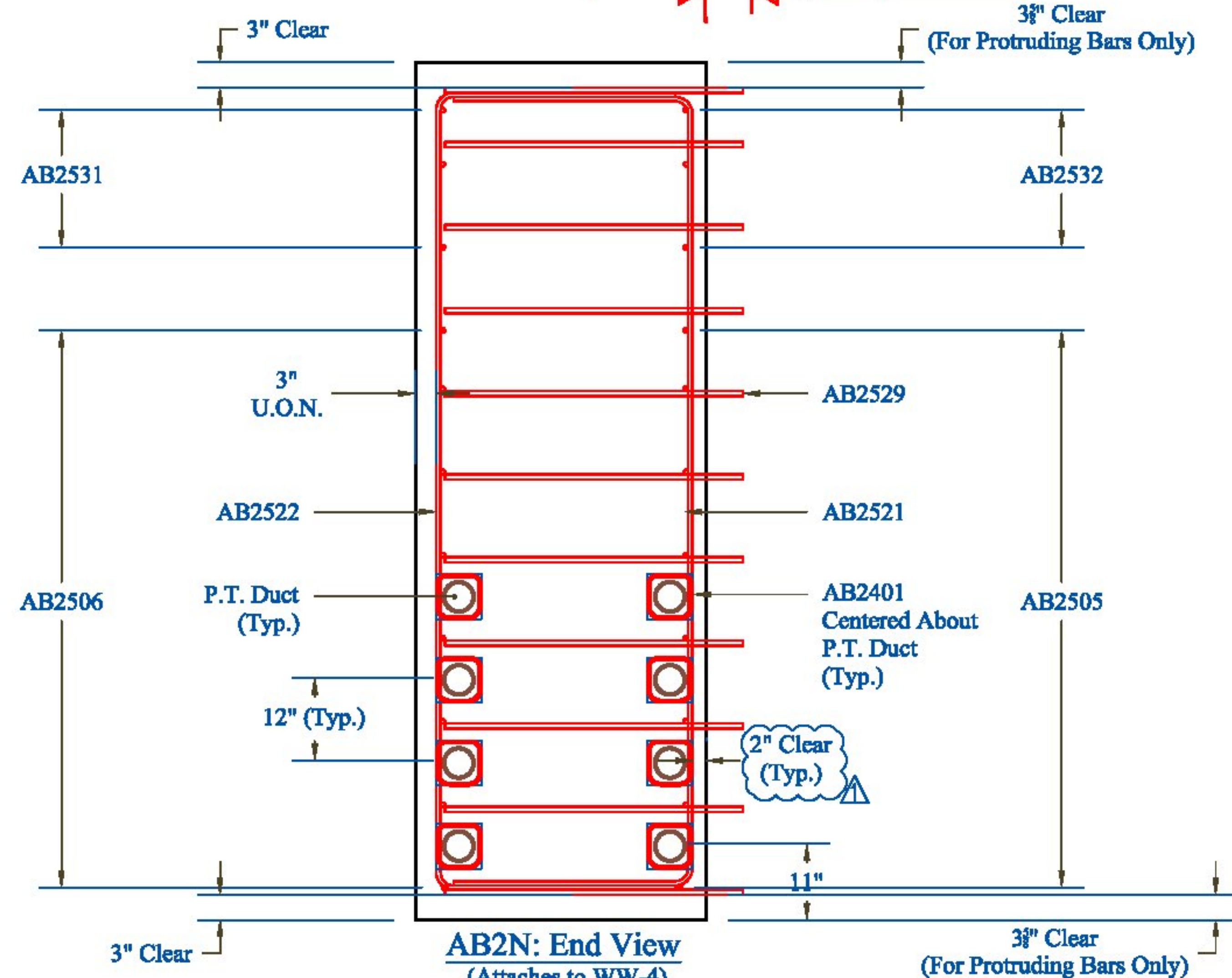
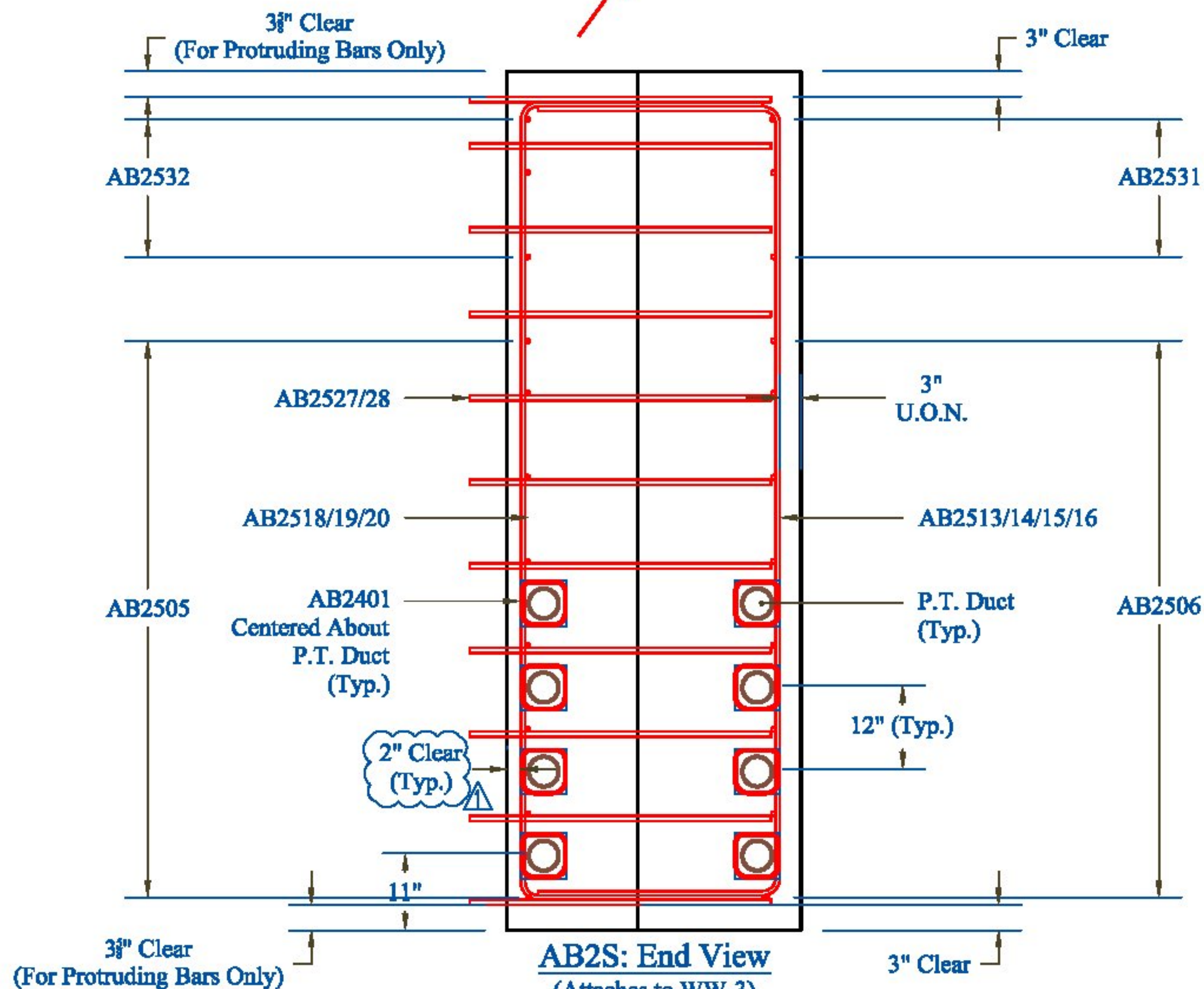
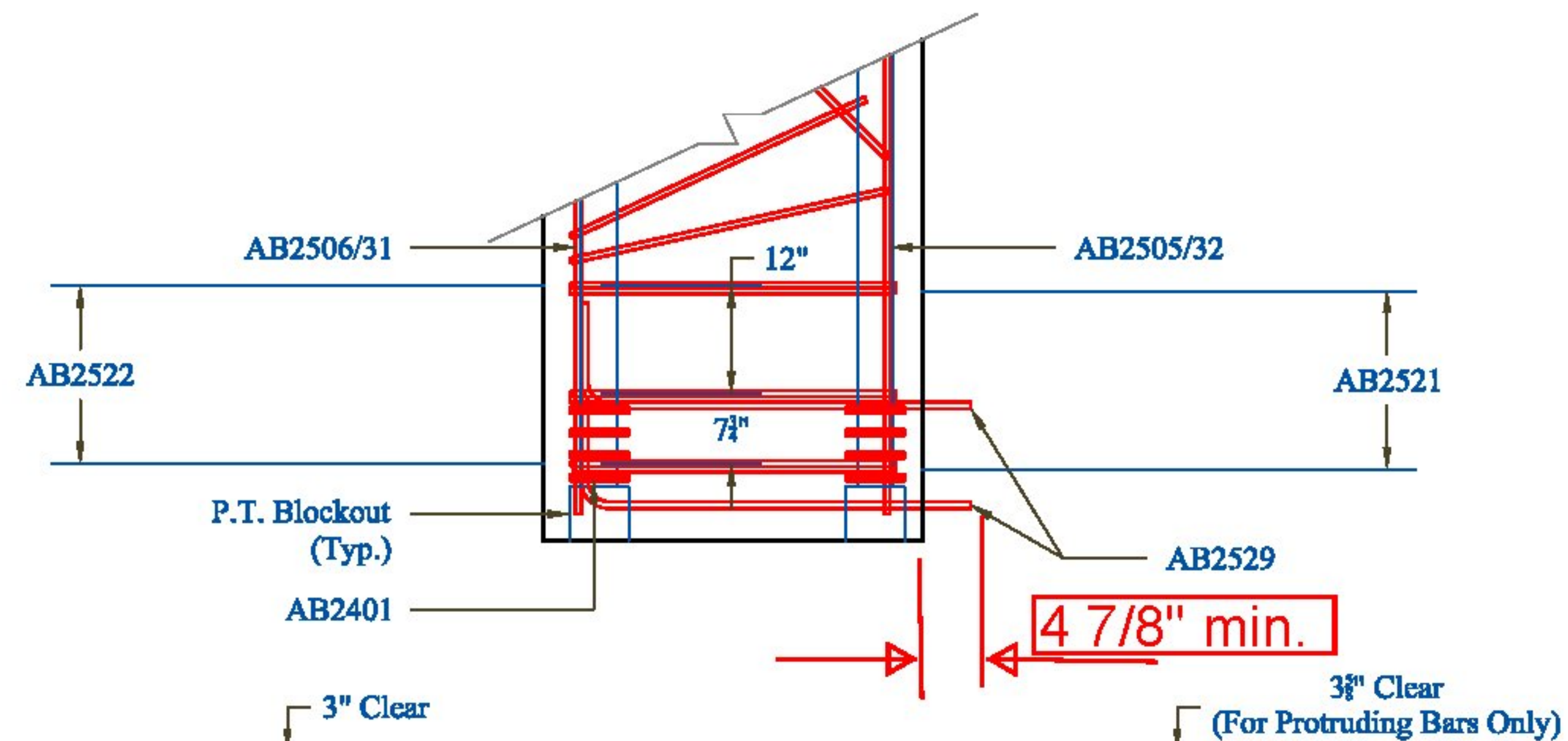
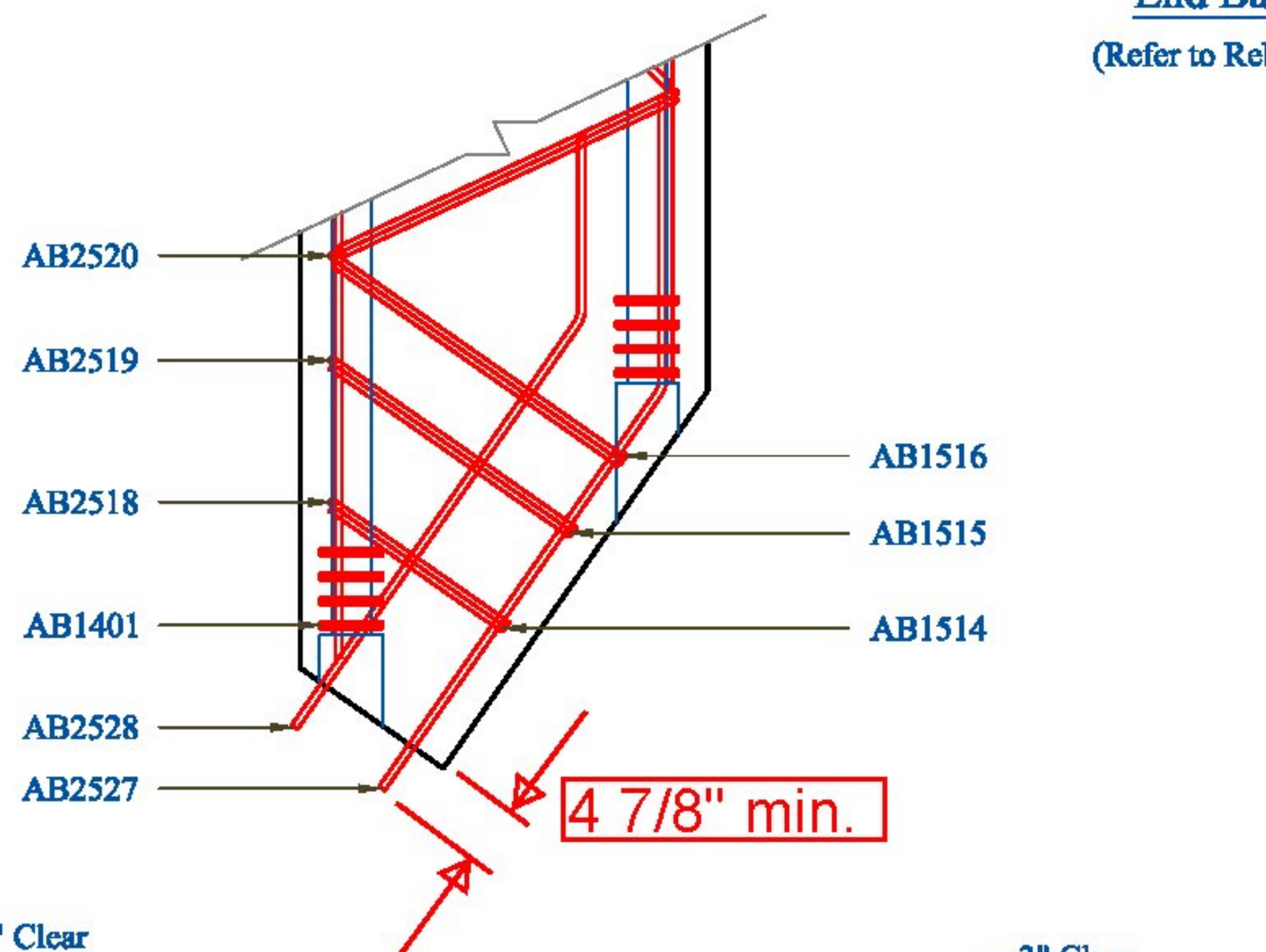


End Bar Detail: Abutment 2
(Refer to Rebar Plan for Full Bar Schedule)



CONTRACTORS VISPE:	<p>Vermont Agency of Transportation RECEIVED</p> <p>CK'D BY MEM OK'D BY CWC Apr. 17, 2015</p> <p>RESUBMIT APPROVED AS NOTED ✓ BY C. Carlson DATE 04-17-2015</p>	Rev. 1	Date 04/16/15	By IBA	Description Changes per State Review	<p>PRECAST CONCRETE ABUTMENT SHOP DRAWINGS (SDI JOB #15264)</p> <p>SUPERVISOR: M. WHEELER DETAILER: I. ADAMS CHECKER: E. Barendse ENGINEER: VTAOT</p>		<p>PROJECT NAME: Bristol BR# 021-1(29) PROJECT #: 021-1(29) LOCATION: Bristol, VT</p>	<p>INSTALLER: S.D. Ireland Concrete 193 Industrial Ave Williston, VT 05495</p>	<p>FABRICATOR: 193 INDUSTRIAL AVE. WILLISTON, VT 05495 Ph: (802) 658-0201</p>	
						03/17/2015	END_BAR_DETAIL_2	10_OF_16			