

CONSTRUCT 3' WIDE PAVED APRON
 STA 105+55.0 LT - STA 106+02.9 LT - 47.9'

CONSTRUCT GRAVEL DRIVE
 STA 105+79.0 LT - 16'

BRIDGE RAILING, GALVANIZED 2 RAIL BOX BEAM
 STA 106+73.3 LT - STA 107+28.2 LT
 STA 106+57.8 RT - STA 107+12.7 RT

CAST-IN-PLACE CONCRETE CURB, TYPE B
 STA 106+20.8 RT - STA 106+60.8 RT
 STA 106+35.3 LT - STA 106+75.2 LT
 STA 107+10.8 RT - STA 107+50.7 RT
 STA 107+25.2 LT - STA 107+65.2 LT

STEEL BEAM GUARDRAIL, GALVANIZED
 STA 105+94.2 LT - STA 106+44.2 LT
 STA 105+28.7 RT - STA 106+28.7 RT
 STA 107+57.3 LT - STA 108+19.8 LT
 STA 107+41.8 RT - STA 107+79.3 RT

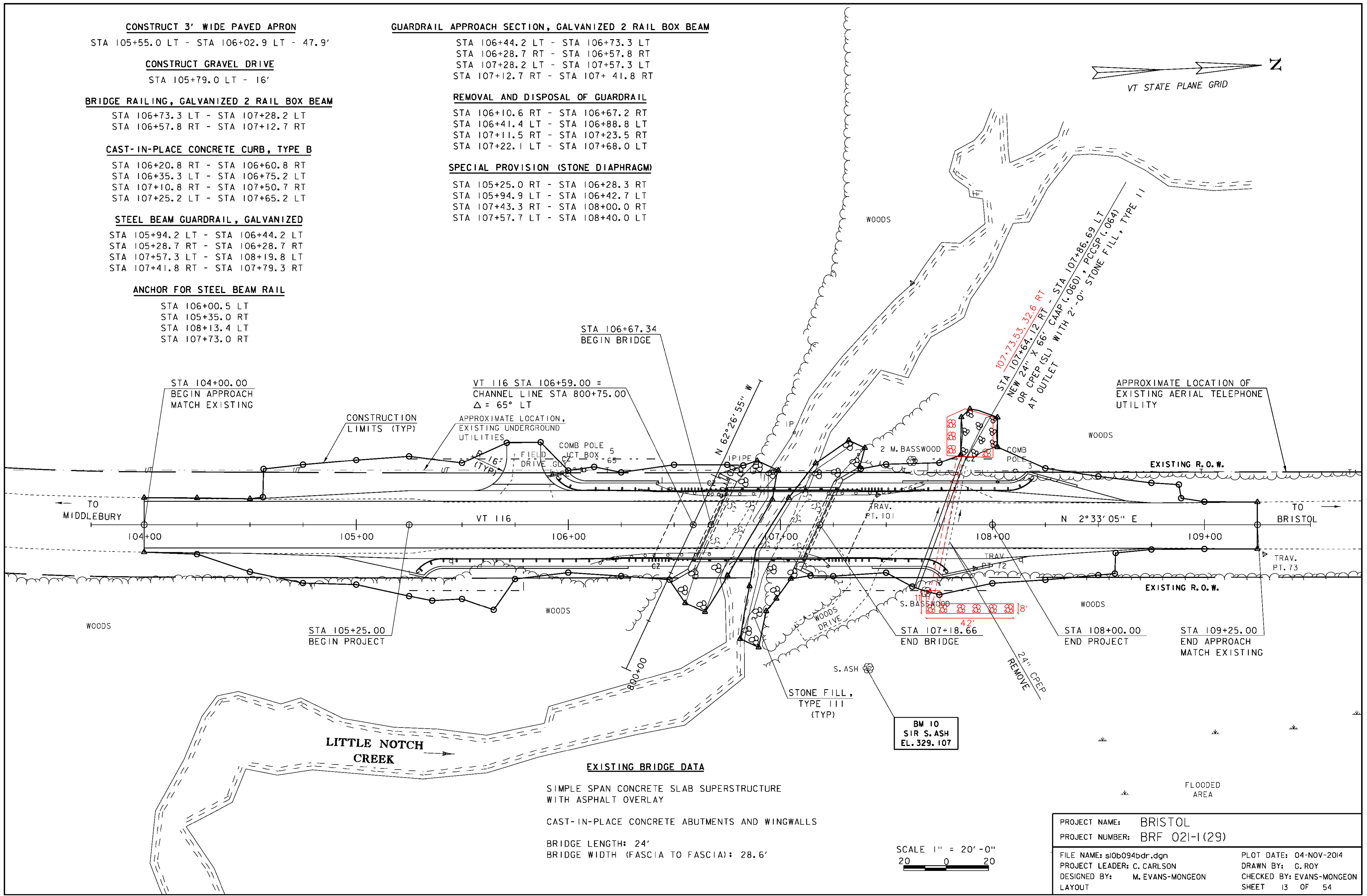
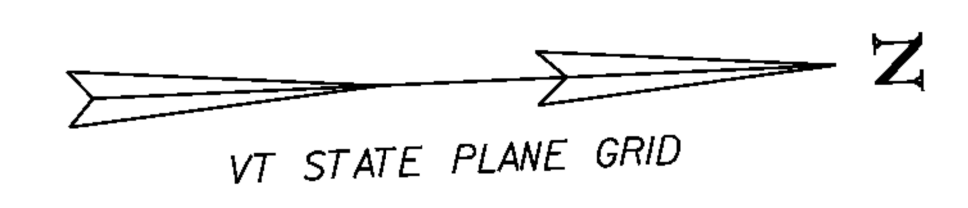
ANCHOR FOR STEEL BEAM RAIL
 STA 106+00.5 LT
 STA 105+35.0 RT
 STA 108+13.4 LT
 STA 107+73.0 RT

GUARDRAIL APPROACH SECTION, GALVANIZED 2 RAIL BOX BEAM

STA 106+44.2 LT - STA 106+73.3 LT
 STA 106+28.7 RT - STA 106+57.8 RT
 STA 107+28.2 LT - STA 107+57.3 LT
 STA 107+12.7 RT - STA 107+ 41.8 RT

REMOVAL AND DISPOSAL OF GUARDRAIL
 STA 106+10.6 RT - STA 106+67.2 RT
 STA 106+41.4 LT - STA 106+88.8 LT
 STA 107+11.5 RT - STA 107+23.5 RT
 STA 107+22.1 LT - STA 107+68.0 LT

SPECIAL PROVISION (STONE DIAPHRAGM)
 STA 105+25.0 RT - STA 106+28.3 RT
 STA 105+94.9 LT - STA 106+42.7 LT
 STA 107+43.3 RT - STA 108+00.0 RT
 STA 107+57.7 LT - STA 108+40.0 LT



STA 106+67.34
 BEGIN BRIDGE

STA 104+00.00
 BEGIN APPROACH
 MATCH EXISTING

VT 116 STA 106+59.00 =
 CHANNEL LINE STA 800+75.00
 $\Delta = 65^\circ$ LT

CONSTRUCTION
 LIMITS (TYP)

APPROXIMATE LOCATION,
 EXISTING UNDERGROUND
 UTILITIES

COMB POLE
 CT BOX - 65

107+73.53, 32.6 RT
 STA 107+64.72 RT - STA 107+86.69 LT
 NEW 24" X 66" CPEP (SL) WITH 2'-0" STONE FILL, TYPE II
 AT OUTLET

APPROXIMATE LOCATION OF
 EXISTING AERIAL TELEPHONE
 UTILITY

EXISTING R. O. W.

TO
 MIDDLEBURY

TO
 BRISTOL

104+00

105+00

106+00

107+00

108+00

109+00

STA 105+25.00
 BEGIN PROJECT

STA 107+18.66
 END BRIDGE

STA 108+00.00
 END PROJECT

STA 109+25.00
 END APPROACH
 MATCH EXISTING

STONE FILL,
 TYPE III
 (TYP)

BM 10
 SIR S. ASH
 EL. 329.107

EXISTING BRIDGE DATA

SIMPLE SPAN CONCRETE SLAB SUPERSTRUCTURE
 WITH ASPHALT OVERLAY

CAST-IN-PLACE CONCRETE ABUTMENTS AND WINGWALLS

BRIDGE LENGTH: 24'
 BRIDGE WIDTH (FASCIA TO FASCIA): 28.6'

SCALE 1" = 20'-0"
 20 0 20

FLOODED
 AREA

| | |
|-------------------------------|-------------------------------|
| PROJECT NAME: BRISTOL | PROJECT NUMBER: BRF 021-1(29) |
| FILE NAME: sl0b094bdr.dgn | PLOT DATE: 04-NOV-2014 |
| PROJECT LEADER: C. CARLSON | DRAWN BY: G. ROY |
| DESIGNED BY: M. EVANS-MONGEON | CHECKED BY: EVANS-MONGEON |
| LAYOUT | SHEET 13 OF 54 |