

GPS CONTROL POINTS

**HVCTRL #1**

CGS TRIANGULATION STATION DISC  
 "BRISTOL 2 1970"  
 NORTH = 595643.717  
 EAST = 1485447.780  
 ELEV. = 577.427

STATION IS LOCATED ABOUT 0.8 KM (0.5 MILE) WEST OF CENTER OF BRISTOL, IN THE WEST ANGLE OF THE T-INTERSECTION OF STATE HIGHWAY 17 AND A MACADAM ROAD RUNNING NORTH, UP ON A LOW CUTBANK, IN SOUTHWEST CORNER OF SCHOOL PLAYGROUND, FORMERLY BRISTOL AIRPORT. TO REACH STATION FROM THE MAIN INTERSECTION IN CENTER OF BRISTOL, GO WEST ON STATE HIGHWAY 17 FOR 0.97 KM (0.6 MILE) TO STATION ON RIGHT, WHERE THE HIGHWAY BEGINS TO CURVE LEFT, DOWNGRADE. STATION MARK IS A STANDARD DISK STAMPED BRISTOL 2 1910, SET IN TOP OF A 0.25 m (10 INCH) DIAMETER, CONCRETE MONUMENT FLUSH WITH THE GROUND. IT IS 21 m (69 FEET) NORTHWEST OF CENTER LINE OF HIGHWAY 17, 13.4 m (44 FEET) WEST-NORTHWEST OF CENTER LINE OF MACADAM SIDE ROAD, 1.4 m (4.5 FEET) NORTH OF POWER POLE 29, 6.64 m (21.8 FEET) NORTH OF A FIRE HYDRANT, AND 0.46 m (1.5 FEET) SOUTHWEST OF A METAL WITNESS POST

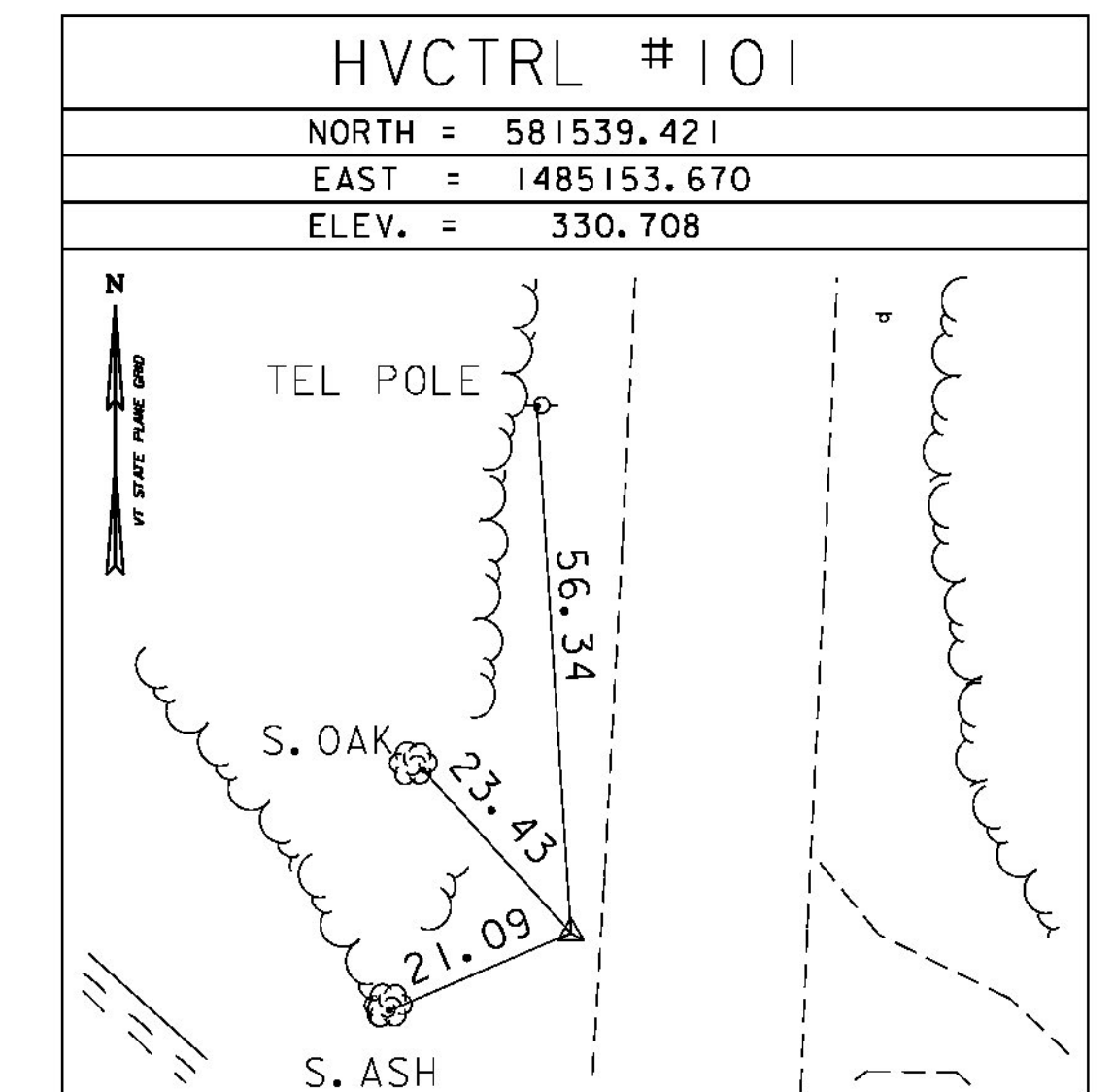
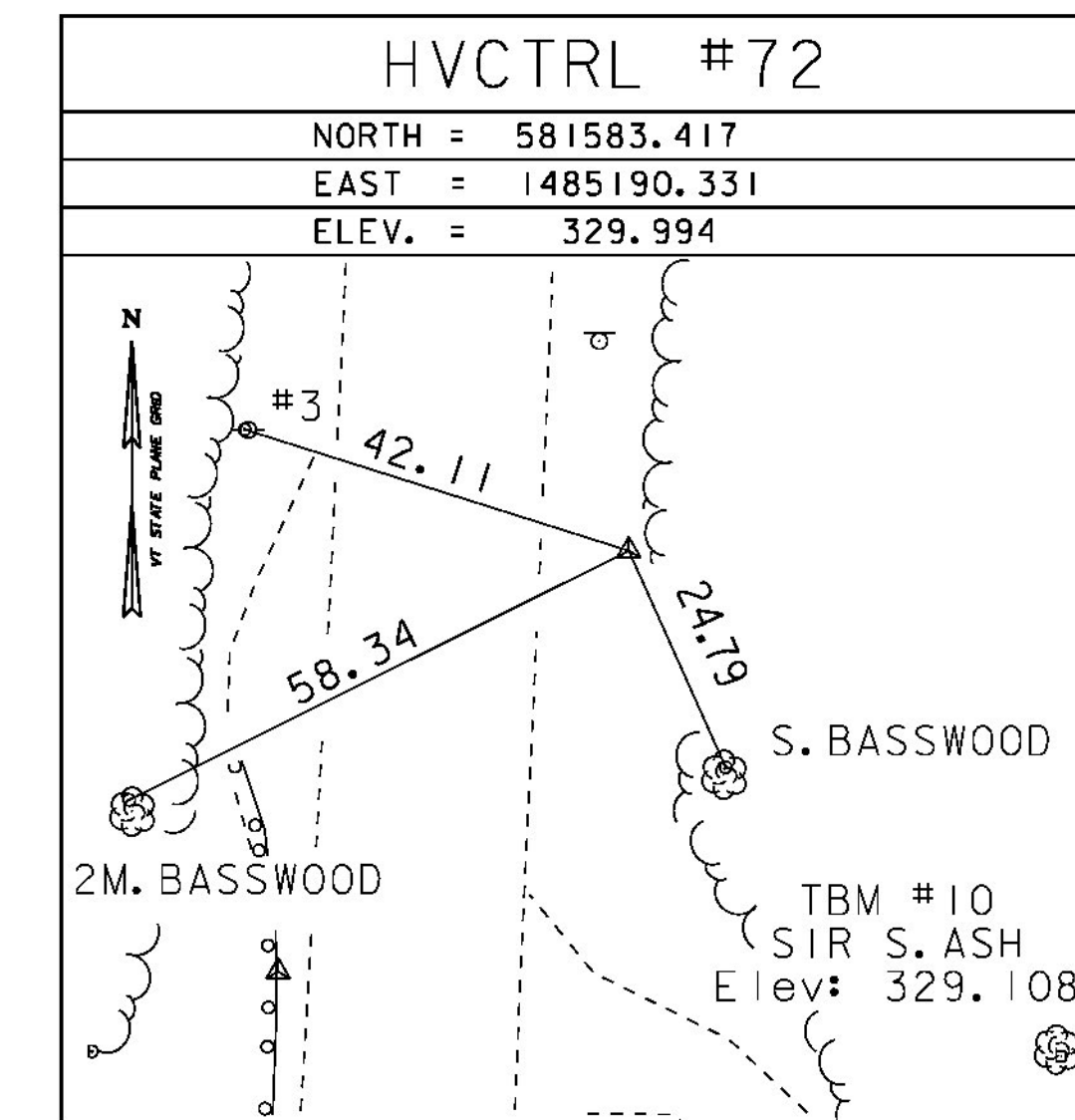
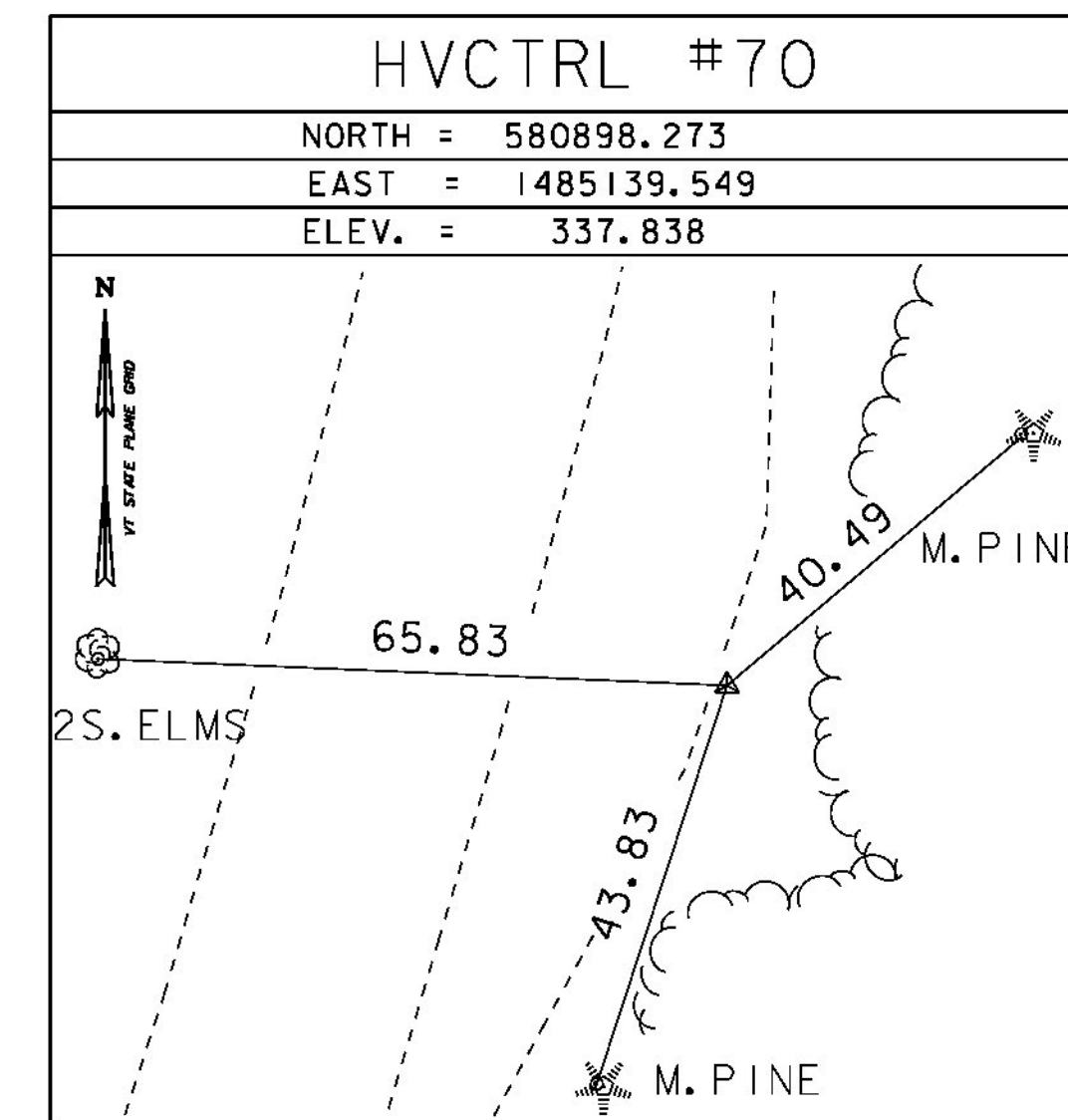
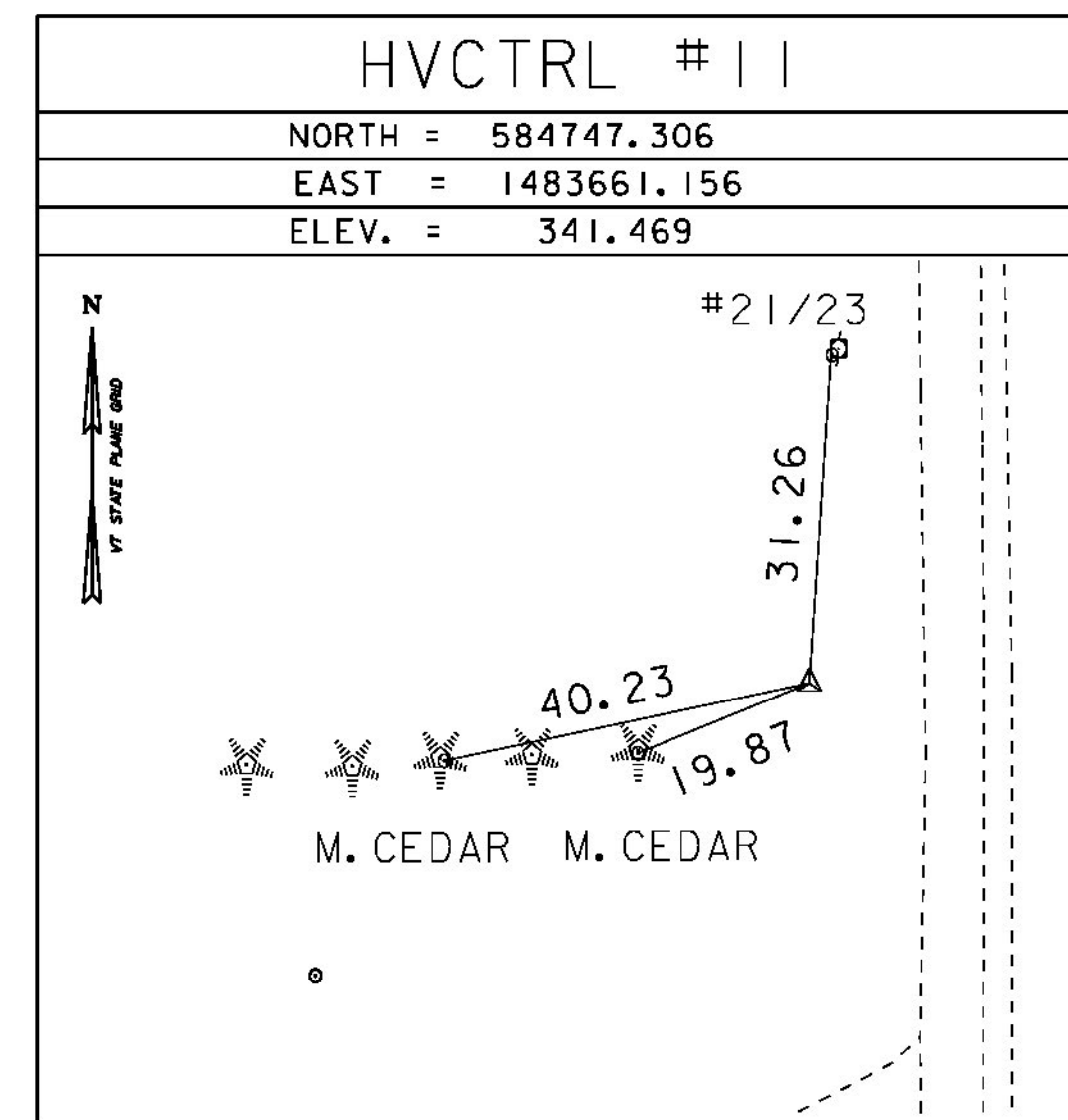
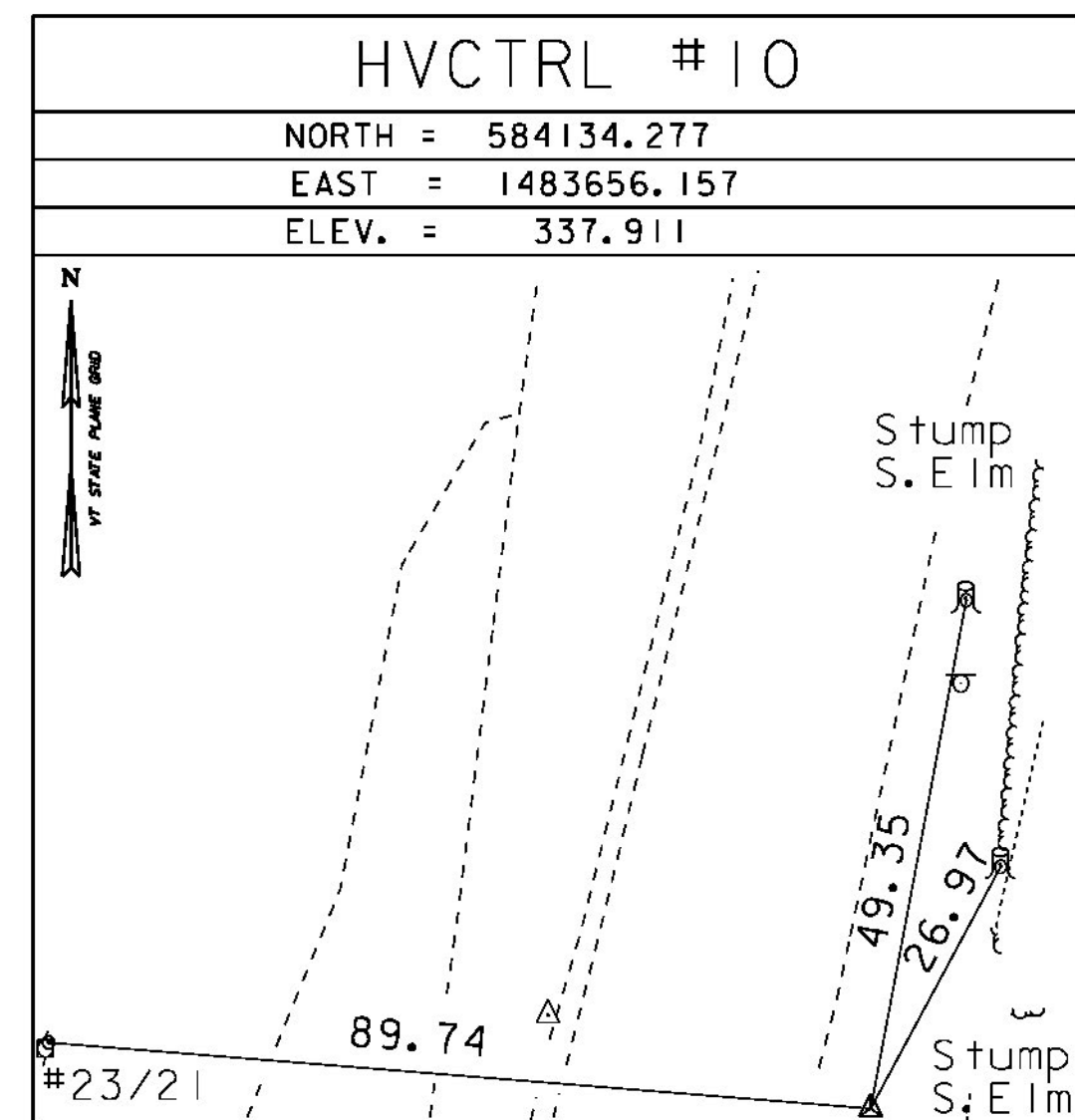
**HVCTRL #2**

STANDARD DISK STAMPED  
 "POWERLINE 1991"  
 NORTH = 592458.116  
 EAST = 1466209.098  
 ELEV. = 425.521

GENERAL LOCATION, NEW HAVEN, VT. TO REACH FROM THE INTERSECTION OF VT ROUTE 17 EAST AND US ROUTE 7 IN NEW HAVEN JUNCTION, GO EAST ALONG VT ROUTE 17 FOR 1.4 KM (0.9 MILE) TO A POWERLINE CROSSING AND THE MARK ON THE LEFT. THE MARK IS, SET FLUSH WITH GROUND SURFACE IN THE TOP OF A 25 cm (1 FOOT) DIAMETER CONCRETE MONUMENT. IT IS 12.7 m (41.7 FEET) NORTH OF AND ABOUT LEVEL WITH THE CENTERLINE OF VT ROUTE 17, 3.7 m (12.1 FEET) EAST OF POLE NO.3. 15.3 m (50.2 FEET) WEST OF POLE NO.303, AND 0.8 m (2.6 FEET) NORTH OF A FIBERGLASS WITNESS POST.

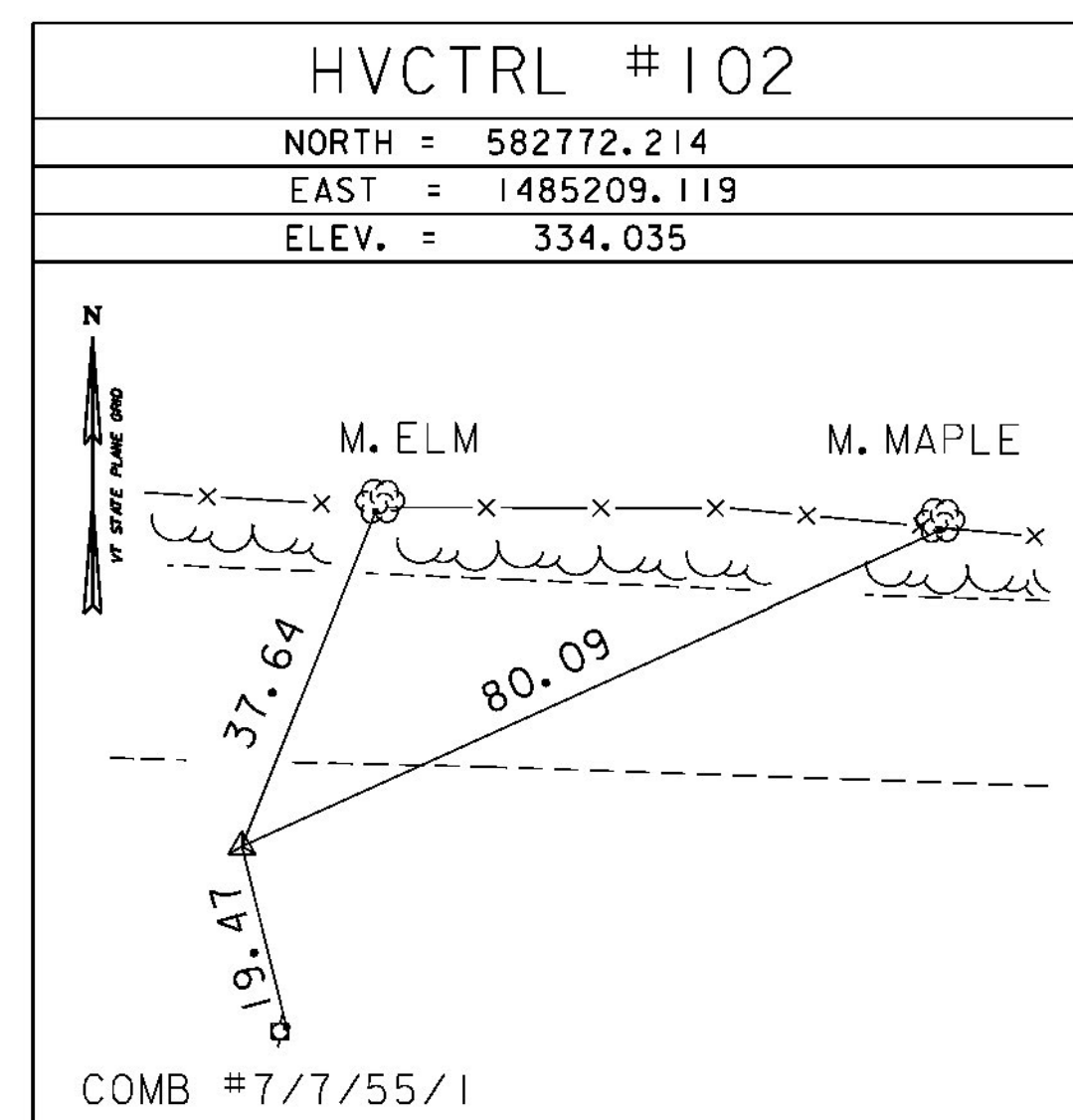
\* Description provided by the Vermont Agency of Transportation Geodetic Survey Unit

TRAVERSE TIES



\* MAIN TRAVERSE COMPLETED: MAY 10, 1999 BY: CLD

ALIGNMENT TIES



VT 116			
	STATION	NORTHING	EASTING
POB	103+75.00	581168.0686	1485151.1601
POE	109+50.00	581742.4986	1485176.7565
Tangent Direction:	N 2°33'05" E		
Tangent Length:	575.00		
CHANNEL			
	STATION	NORTHING	EASTING
POB	800+00.00	581417.2360	1485230.3702
POT	801+50.00	581486.7772	1485097.4640
Tangent Direction:	N 62°26'55" W		

DATUM	
VERTICAL	NAVD 88
HORIZONTAL	NAD 83 (96)
ADJUSTMENT	Unknown

PROJECT NAME:	BRISTOL
PROJECT NUMBER:	BRF 021-1(29)
FILE NAME:	si0b094+1e.dgn
DESIGNED BY:	M. EVANS-MONGEON
TIE SHEET	
PLOT DATE:	04-NOV-2014
DRAWN BY:	R. BULLOCK
CHECKED BY:	EVANS-MONGEON
SHEET	12 OF 54