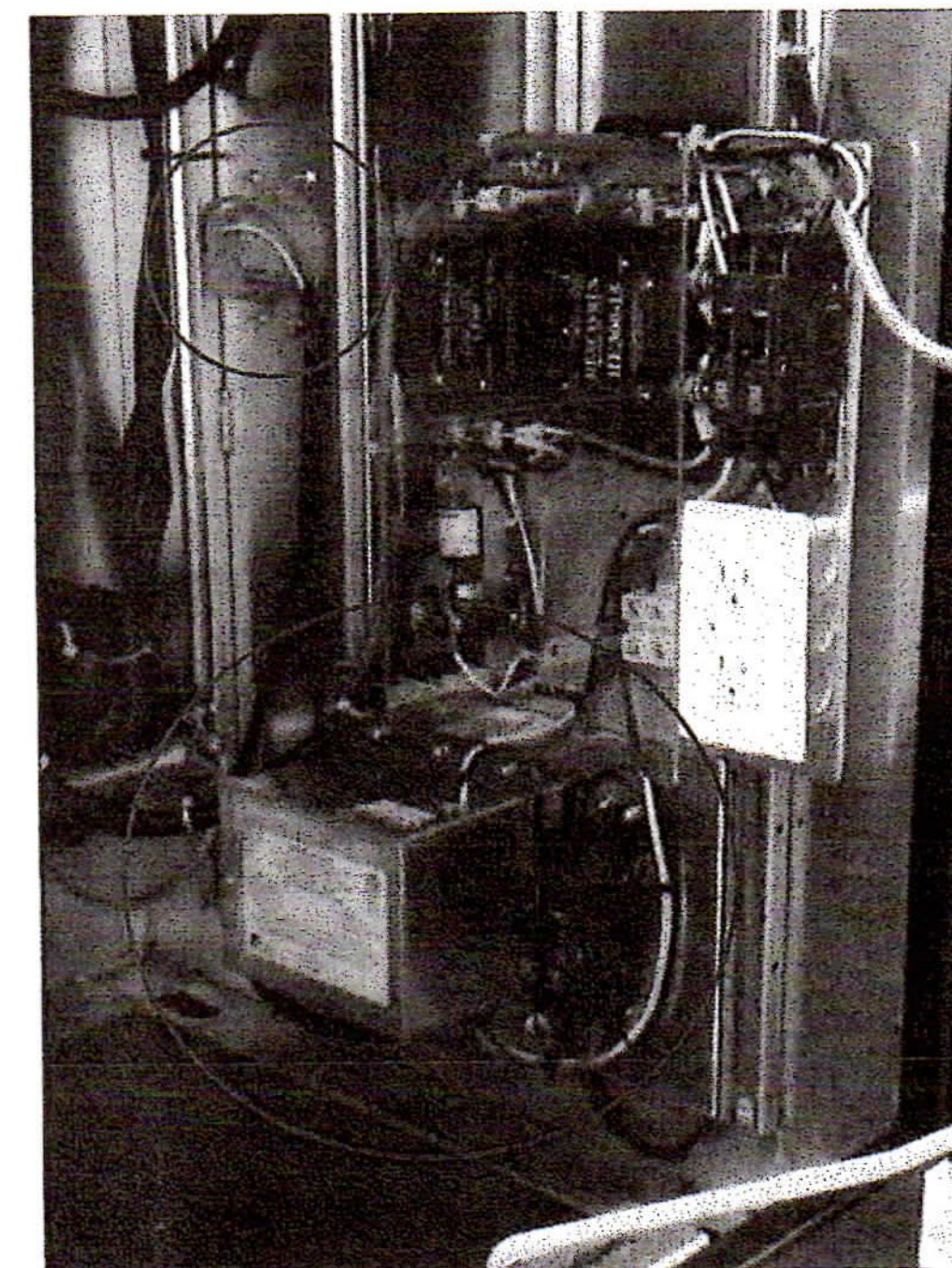
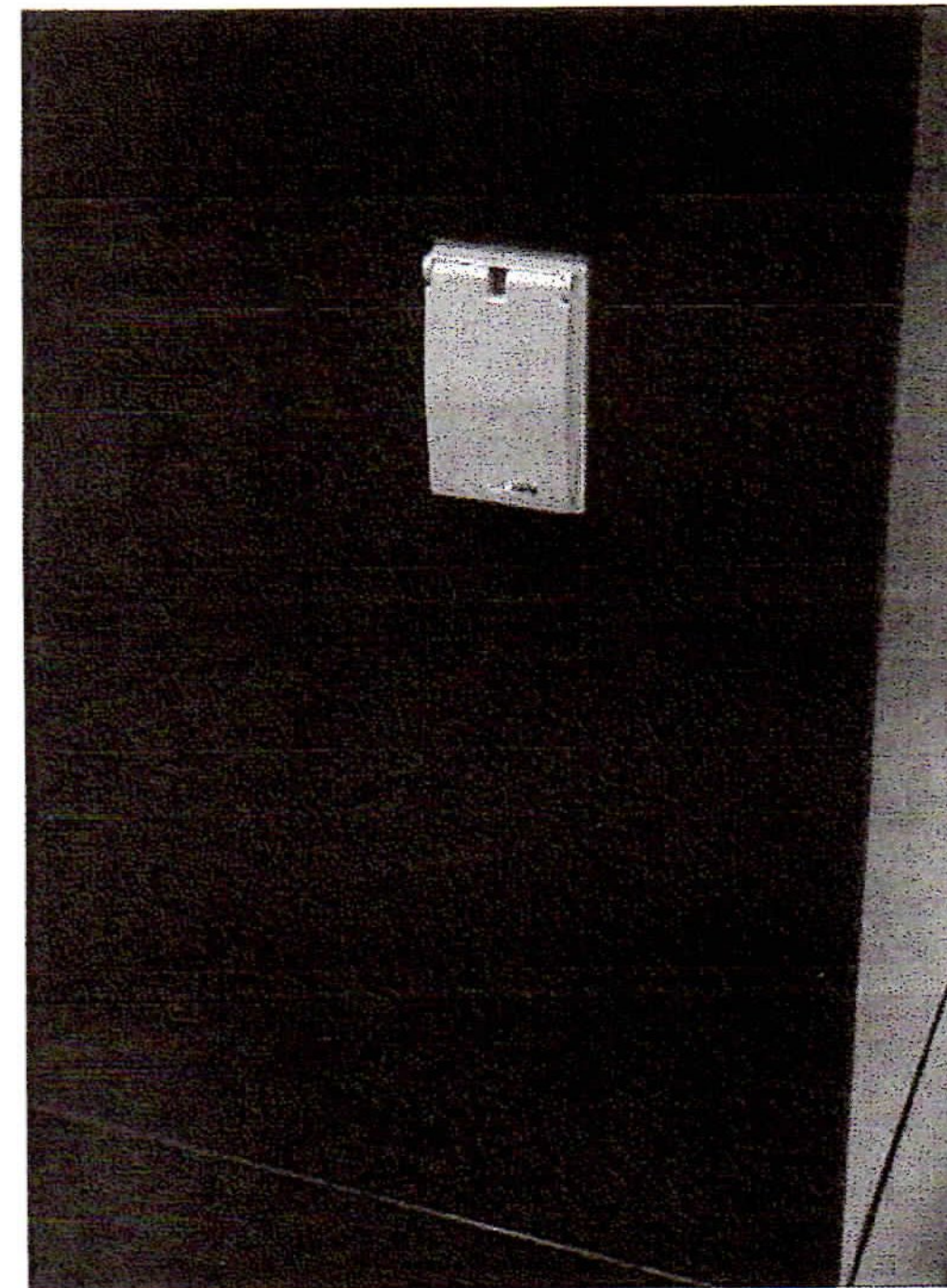




Automatic Generator Transfer Switch



ATS Features

- Automatically Senses Generator Power and Switches Intersection Load to Generator.
- Smooth Power Transfer Regardless of Line Voltage Conditions.
- No Need to Open The Controller Cabinet or Flip Breakers
- Provides Overcurrent Protection on Both Generator Input and Line Input
- 20 Second Electronic Generator Time Delay Allows Generator to Stabilize and Protects Sensitive Traffic Control Equipment
- Chatter-Free Contact Operation Under Low Line Voltage Conditions
- 30 Amp, 120 Volt Rating
- 2-Year Warranty
- ETL Listed
- 50 Amp, 120/240 Volt ATS Also Available

Port Features

- Low Profile Generator Port
- Semi-Flush
- Hasp Lockable
- Small Footprint
- Compatible With All Generator Systems
- Other Generator Ports Available

Highway Tech Signal Equipment Sales, Inc.

6 Sabattus Road • P.O. Box 1209 • Sabattus, Maine 04280 • Phone (207) 375-8248 • Fax (866)-232-7014

Email: sales@highwaytech.com • <http://www.highwaytech.com>