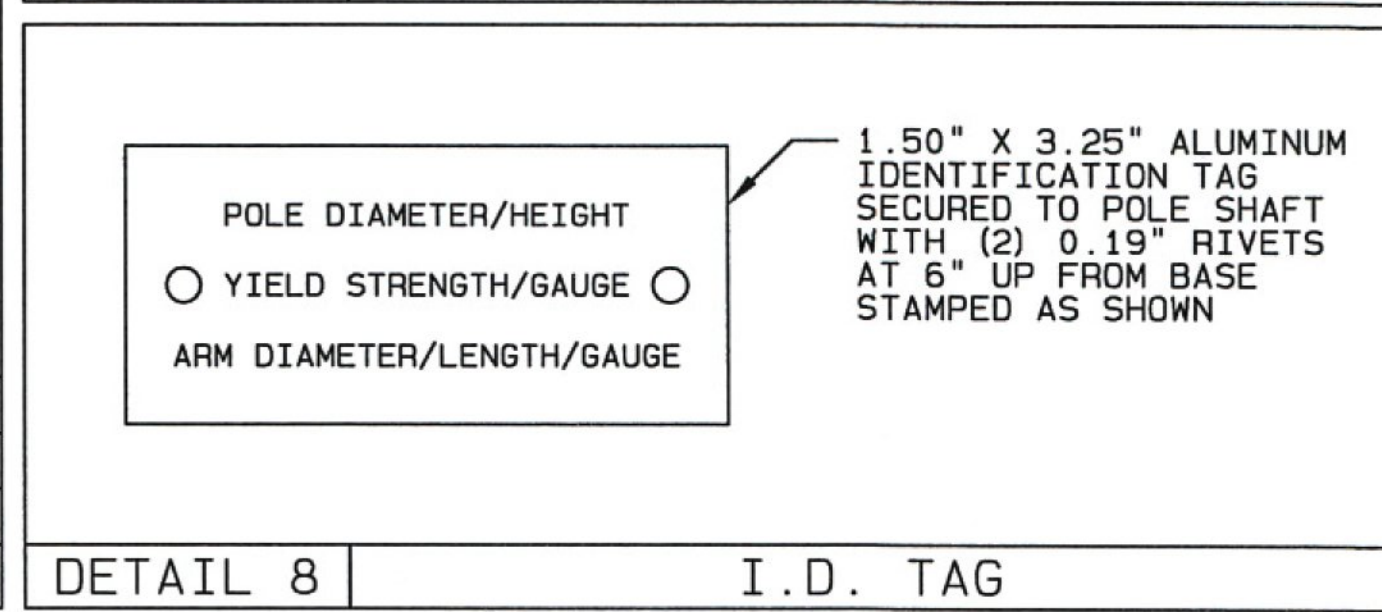
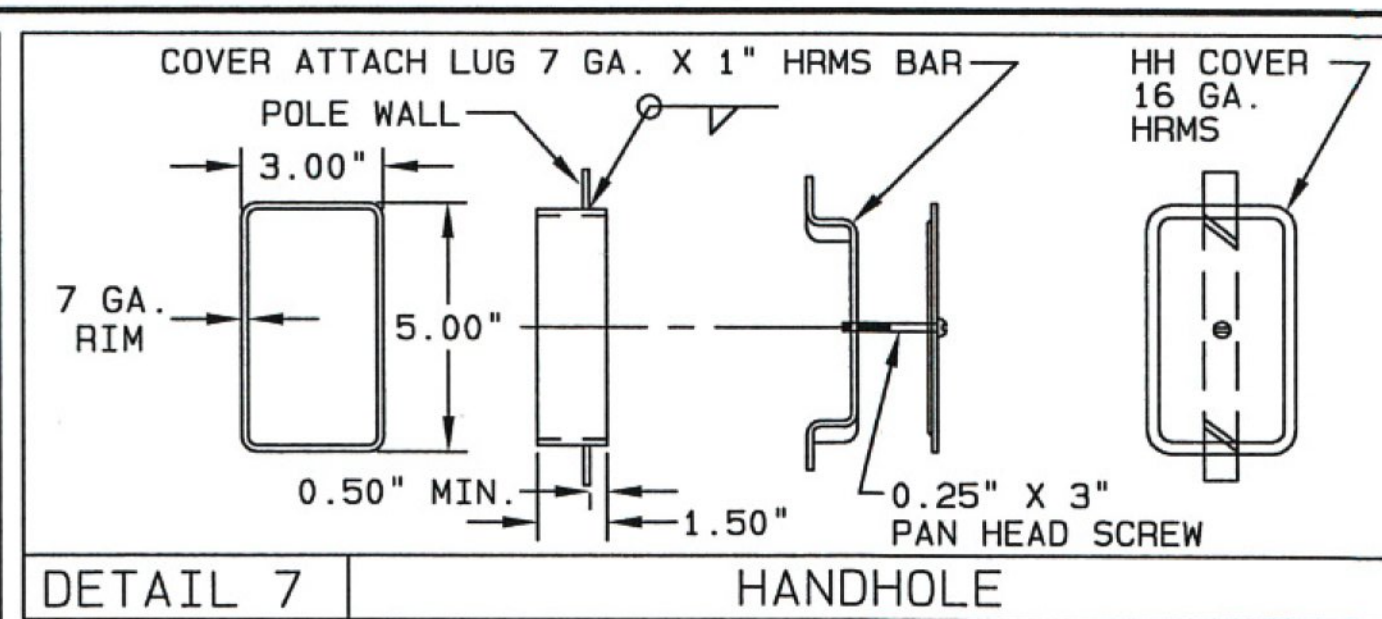
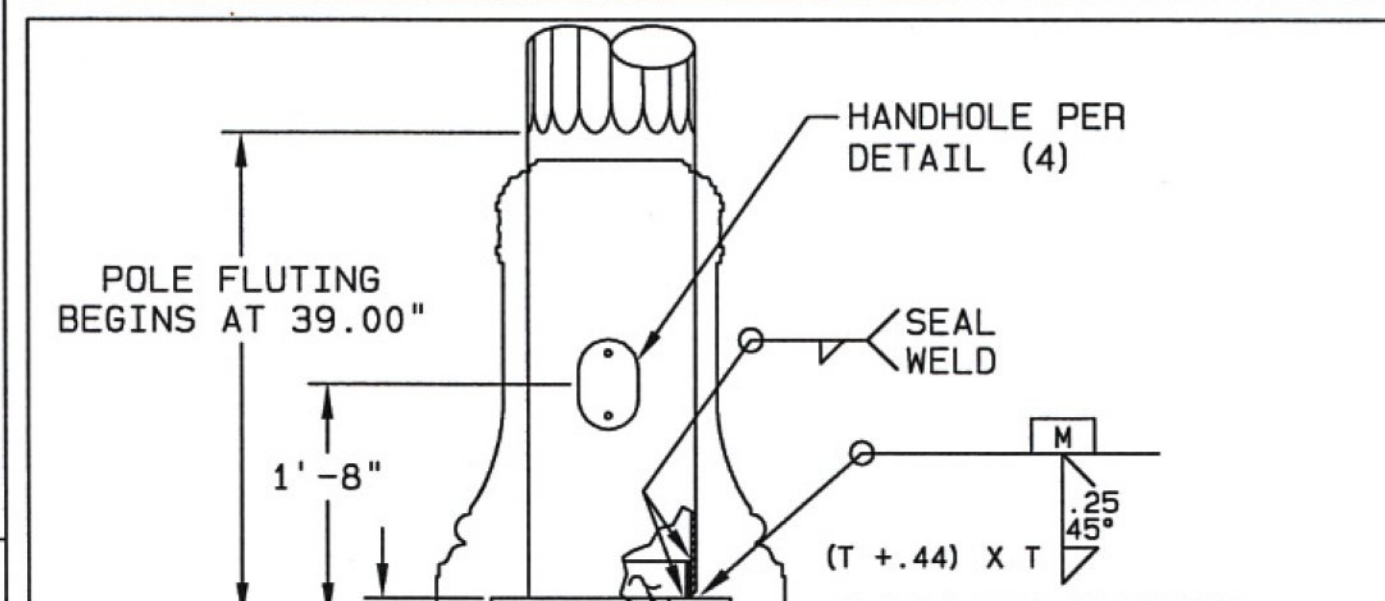


POLE GA.	A	B	C	D
5 GA. (0.2092")	7.31"	5.63"	0.432"	2.000"



MATERIAL DATA					
COMPONENT	ASTM DESIGNATION	MIN. YIELD (KSI)	COMPONENT	ASTM DESIGNATION	MIN. YIELD (KSI)
TAPERED TUBES	A595 GR. A OR A572	55	GALVANIZING- STRUCTURE	A123	
POLE BASE	A36	36	GALVANIZING- HARDWARE	A153	
LUMINAIRE ARM PIPE		36			
SIGNAL ARM CONNECTION	A36	36			
SIGNAL ARM CONN. BOLTS	A325				

**FINISH NOTE:**

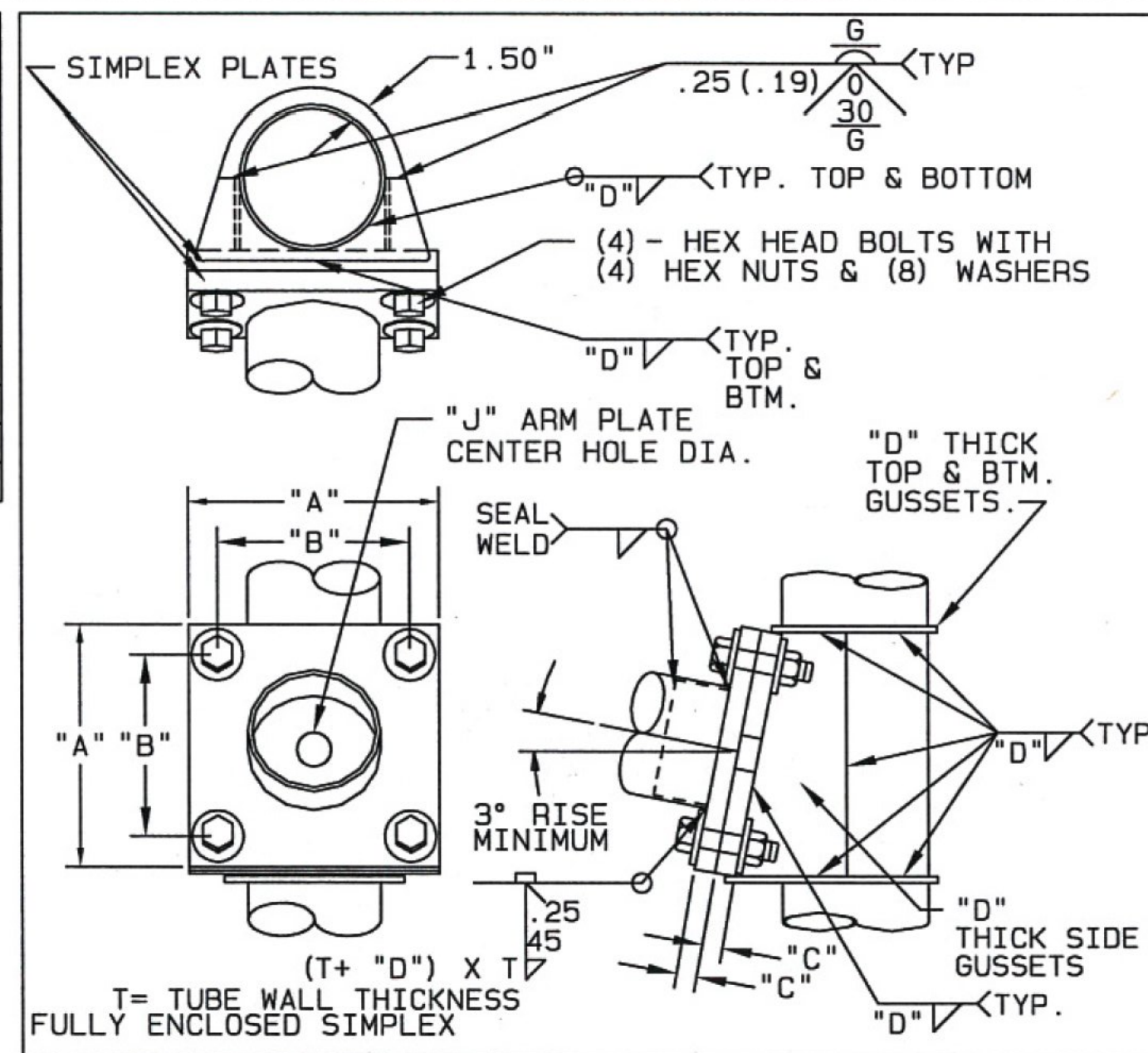
**BASE COAT:** HOT DIP GALVANIZE TO ASTM: A123.

**PRIME COAT:** NEW HIGH BUILD EPOXY POWDER.

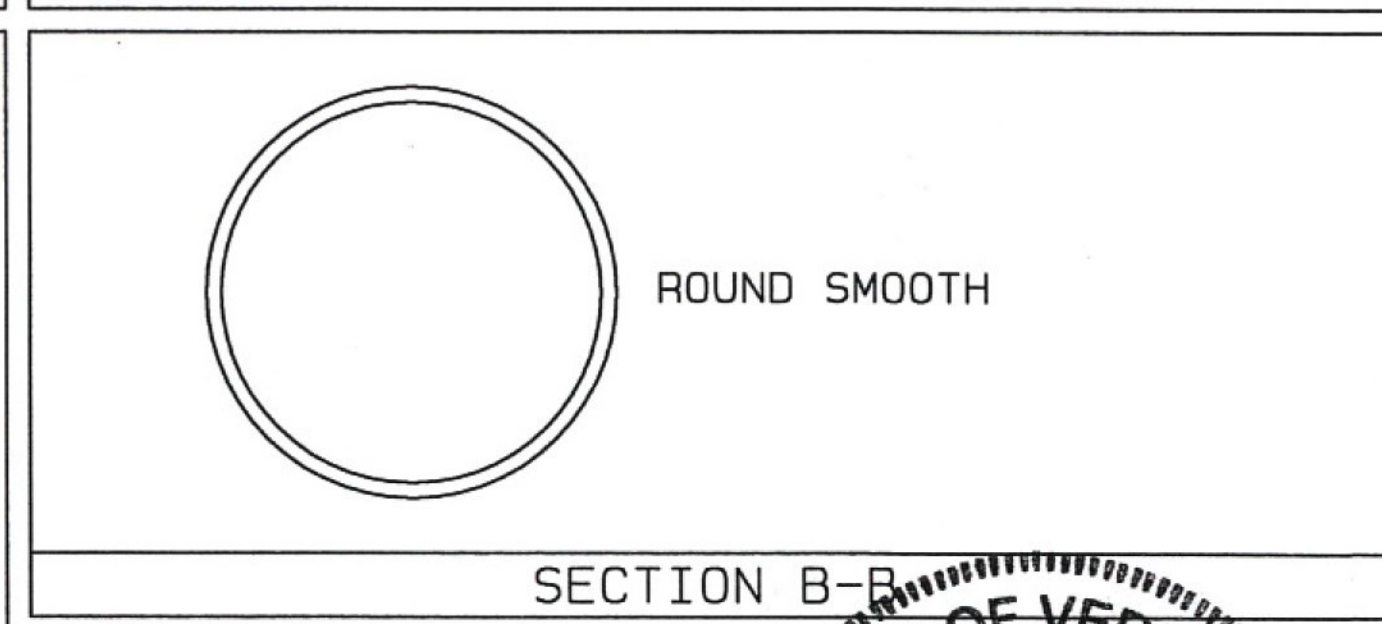
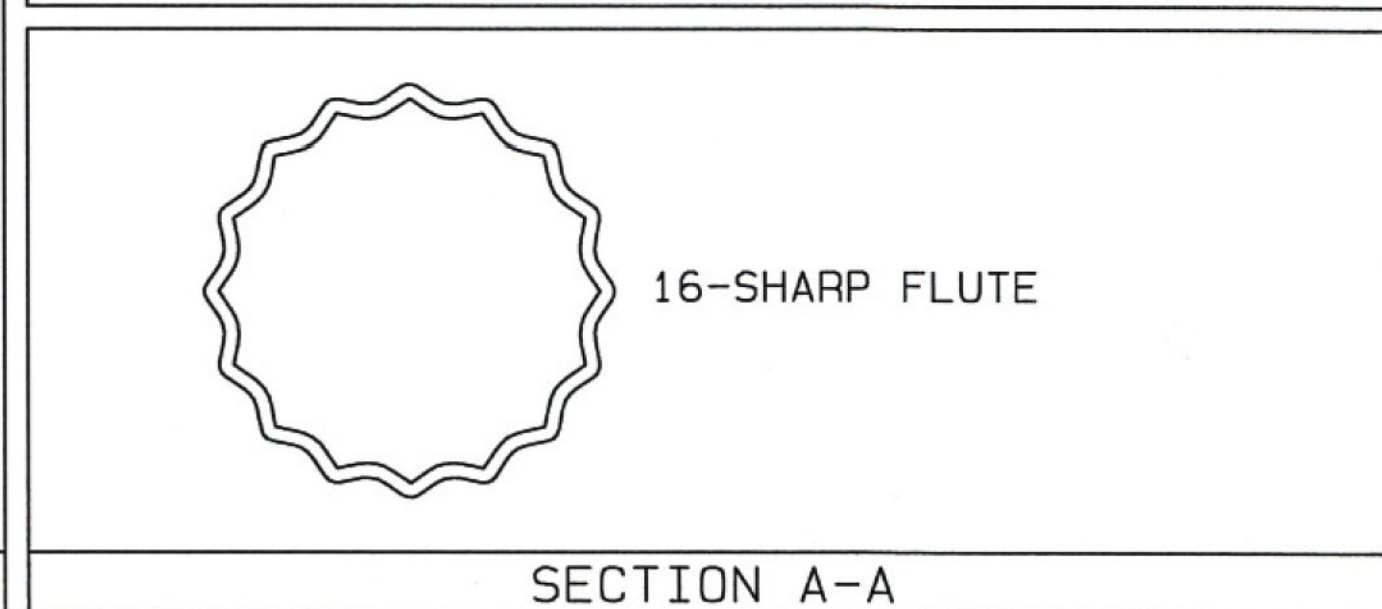
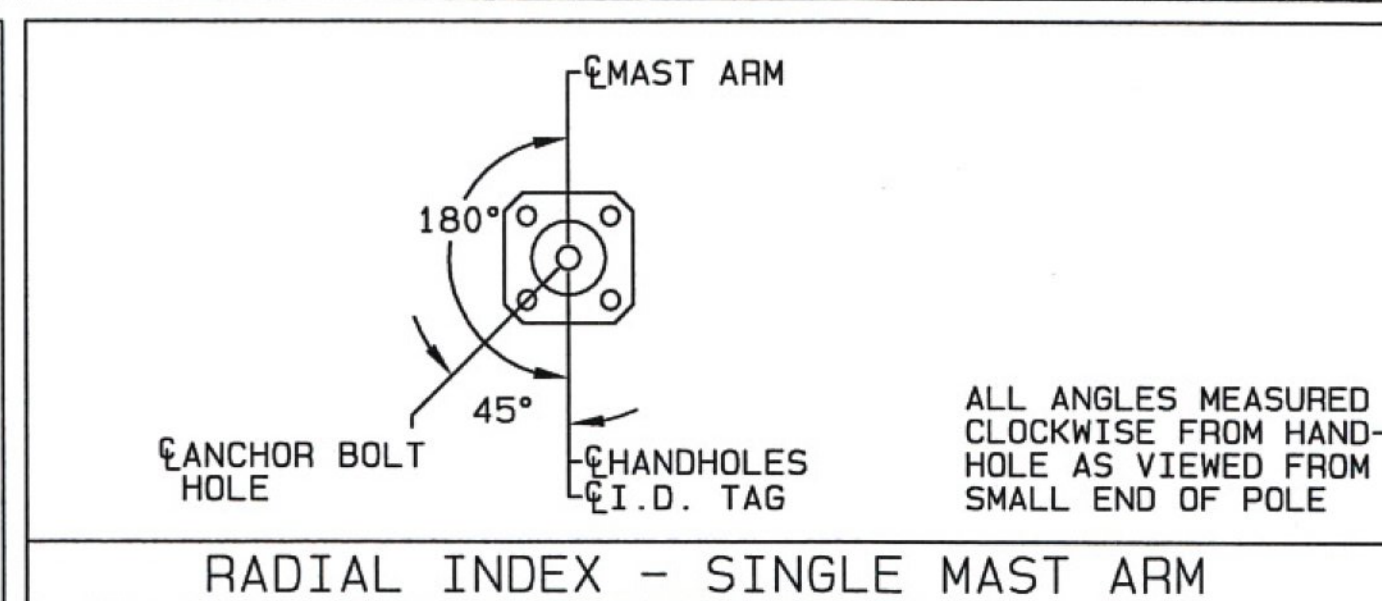
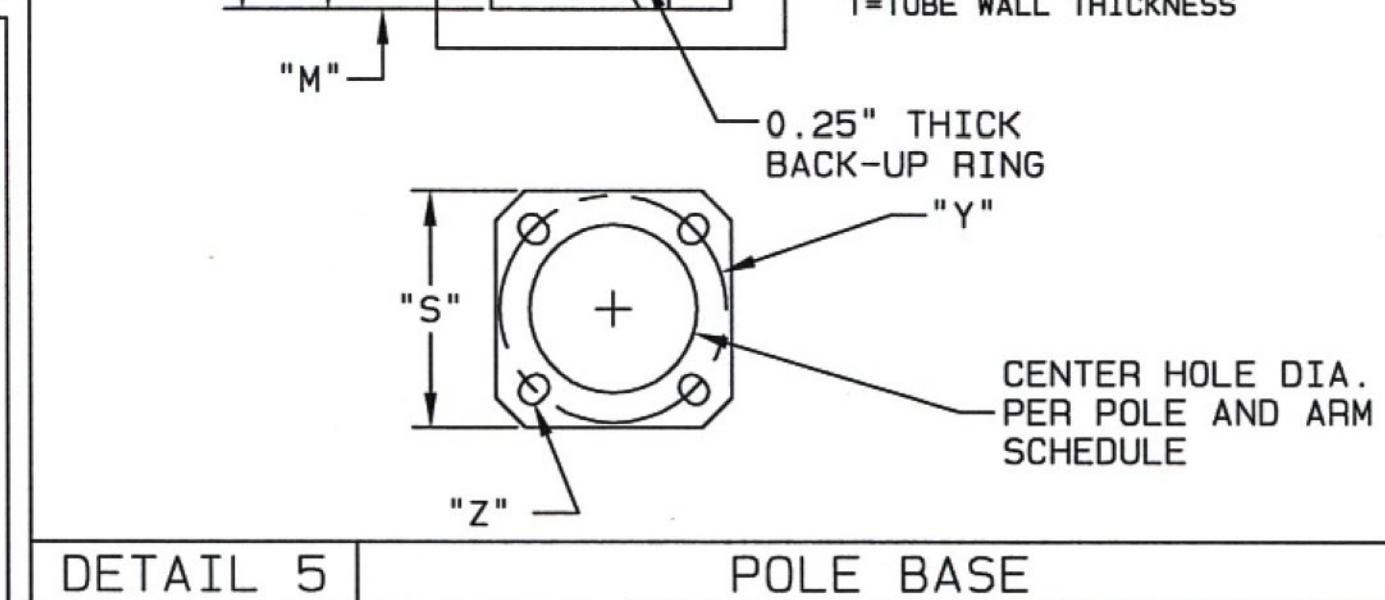
**FINISH COAT:** TGIC OR SUPER DURABLE POLYESTER POWDER. PARK GREEN IN COLOR. VALMONT SPEC. F540.

**PAIN CHIP MUST BE PROVIDED AT TIME OF RELEASE TO ENSURE PROPER COLOR MATCH.**

**FAILURE TO DO SO WILL RESULT IN THE ORDER BEING PLACED ON HOLD.**



4 BOLT SIGNAL ARM ATTACHMENT DATA						
MAST ARM LENGTH (FT)	"A" (IN)	"B" (IN)	"C" (IN)	"D" (IN)	"J" (IN)	"H" (IN)
21.00	17.25	14.00	2.000	0.375	6.50	1.25 X 6.00
34.00	17.25	14.00	2.000	0.375	7.50	1.25 X 6.00
18.00	17.25	14.00	2.000	0.375	6.64	1.25 X 6.00
40.00	17.75	14.50	2.000	0.375	9.00	1.25 X 6.00



REV	DRAWN BY-DATE	CHECK BY-DATE	DESCRIPTION
B	JTF 02/11/15	JTF 02/11/15	ARMS WERE FLUTED
A	JTF 01/12/14	JTF 01/12/14	REVISED PER REQUEST. SHAFTS WERE ROUND.
	JTF 10/28/14	JTF 10/28/14	

SOLD TO: HIGHWAY TECH	JOB: VT D.O.T.
SHIP TO: DON WESTON EXCAVATING	BRISTOL, VT - HES 021-1 (28)
P.O. #: 9261	TITLE: TRAFFIC SIGNAL STRUCTURES
AGENT: HIGHWAY TECH	

VALMONT INDUSTRIES, INC. RESERVES THE RIGHT TO INSTALL VARIOUS, ENGINEER APPROVED, MATERIAL HANGING ACCOMMODATIONS TO FACILITATE THE MANUFACTURING PROCESS.

Valmont  
Valley, NE 68064  
(402) 359-2201

ORDER NUMBER: 259710-P1	REV
PAGE NUMBER: 1 OF 2	
DRAWING NUMBER: VT259710P1	B

STATE OF VERMONT  
BARRY N. SLADEK  
No. 99190  
Structural 1  
LICENSED PROFESSIONAL ENGINEER  
2/12/15  
Barry N. Sladek