

DURABLE 4 INCH WHITE LINE, RECESSED POLYUREA
 STA. 11+72 TO 12+03, SOLID LT (PARKING & DIAGONALS) (113 LF)
 STA. 10+25 TO 12+07, SOLID RT (EDGE OF TRAVELWAY) (175 LF)
 STA. 11+78 TO 12+26, SOLID LT (PARKING & DIAGONALS) (86 LF)
 STA. 13+16 TO 13+69, SOLID LT (PARKING & DIAGONALS) (192 LF)
 STA. 13+58 TO 13+68, SOLID RT (PARKING) (18 LF)
 STA. 100+67 TO 101+38, SOLID RT (LANE LINE) (71 LF)
 STA. 100+67 TO 102+46, SOLID RT (EDGE OF TRAVELWAY) (109 LF)
 STA. 100+67 TO 102+33, SOLID LT (EDGE OF TRAVELWAY) (166 LF)
 STA. 101+38 TO 101+87, DASHED RT (LANE LINES) (49 LF)
 STA. 101+40 TO 102+26, SOLID RT (DIAGONALS) (60 LF)
 STA. 200+14 TO 200+95, SOLID RT (PARKING & DIAGONALS) (149 LF)

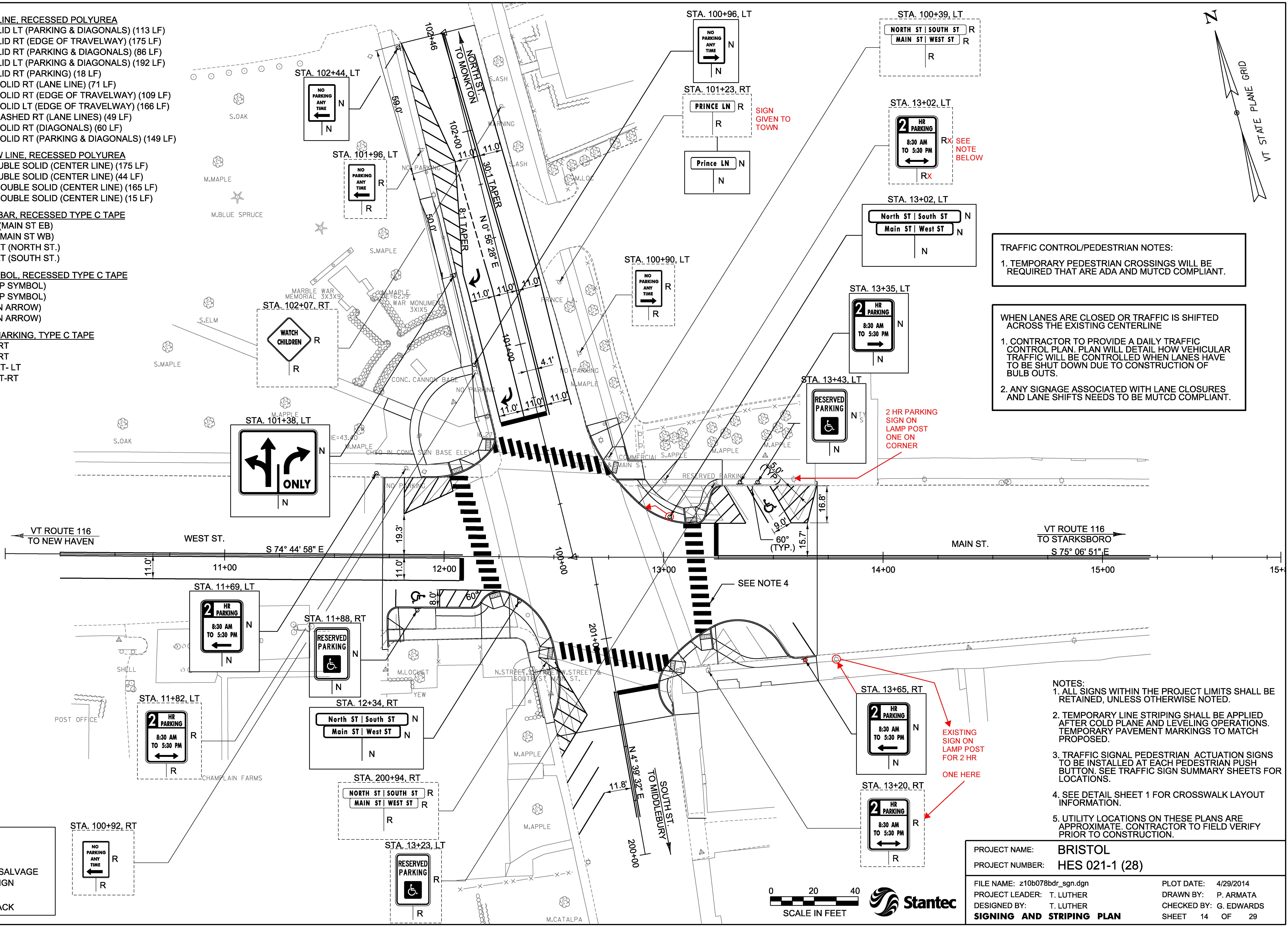
DURABLE 4 INCH YELLOW LINE, RECESSED POLYUREA
 STA. 10+25 TO 12+07, DOUBLE SOLID (CENTER LINE) (175 LF)
 STA. 13+25 TO 13+69, DOUBLE SOLID (CENTER LINE) (44 LF)
 STA. 100+67 TO 102+33, DOUBLE SOLID (CENTER LINE) (165 LF)
 STA. 200+75 TO 200+60, DOUBLE SOLID (CENTER LINE) (15 LF)

DURABLE 24 INCH STOP BAR, RECESSED TYPE C TAPE
 STA. 12+08 TO 12+08, RT (MAIN ST EB)
 STA. 13+24 TO 13+24, LT (MAIN ST WB)
 STA. 100+66 TO 100+66, RT (NORTH ST.)
 STA. 200+74 TO 200+74, RT (SOUTH ST.)

DURABLE LETTER OR SYMBOL, RECESSED TYPE C TAPE
 STA. 11+97, RT (HANDICAP SYMBOL)
 STA. 13+46, RT (HANDICAP SYMBOL)
 STA. 100+76, RT (RT TURN ARROW)
 STA. 101+32, RT (RT TURN ARROW)

DURABLE CROSSWALK MARKING, TYPE C TAPE
 STA. 12+06 TO 12+22, LT-RT
 STA. 13+12 TO 13+17, LT-RT
 STA. 100+36 TO 100+57, RT-LT
 STA. 200+99 TO 200+84, LT-RT

SIGN LEGEND	
N	= NEW
R	= REMOVE
R&S	= REMOVE & SALVAGE
S	= SALVAGE SIGN
RET	= RETAIN
B-B	= BACK TO BACK



TRAFFIC CONTROL/PEDESTRIAN NOTES:
 1. TEMPORARY PEDESTRIAN CROSSINGS WILL BE REQUIRED THAT ARE ADA AND MUTCD COMPLIANT.

WHEN LANES ARE CLOSED OR TRAFFIC IS SHIFTED ACROSS THE EXISTING CENTERLINE
 1. CONTRACTOR TO PROVIDE A DAILY TRAFFIC CONTROL PLAN. PLAN WILL DETAIL HOW VEHICULAR TRAFFIC WILL BE CONTROLLED WHEN LANES HAVE TO BE SHUT DOWN DUE TO CONSTRUCTION OF BULB OUTS.
 2. ANY SIGNAGE ASSOCIATED WITH LANE CLOSURES AND LANE SHIFTS NEEDS TO BE MUTCD COMPLIANT.

- NOTES:**
1. ALL SIGNS WITHIN THE PROJECT LIMITS SHALL BE RETAINED, UNLESS OTHERWISE NOTED.
 2. TEMPORARY LINE STRIPING SHALL BE APPLIED AFTER COLD PLANE AND LEVELING OPERATIONS. TEMPORARY PAVEMENT MARKINGS TO MATCH PROPOSED.
 3. TRAFFIC SIGNAL PEDESTRIAN ACTUATION SIGNS TO BE INSTALLED AT EACH PEDESTRIAN PUSH BUTTON. SEE TRAFFIC SIGN SUMMARY SHEETS FOR LOCATIONS.
 4. SEE DETAIL SHEET 1 FOR CROSSWALK LAYOUT INFORMATION.
 5. UTILITY LOCATIONS ON THESE PLANS ARE APPROXIMATE. CONTRACTOR TO FIELD VERIFY PRIOR TO CONSTRUCTION.

PROJECT NAME:	BRISTOL	PLOT DATE:	4/29/2014
PROJECT NUMBER:	HES 021-1 (28)	DRAWN BY:	P. ARMATA
FILE NAME:	z10b078bdr_sgn.dgn	DESIGNED BY:	T. LUTHER
PROJECT LEADER:	T. LUTHER	CHECKED BY:	G. EDWARDS
SIGNING AND STRIPING PLAN		SHEET 14 OF 29	

