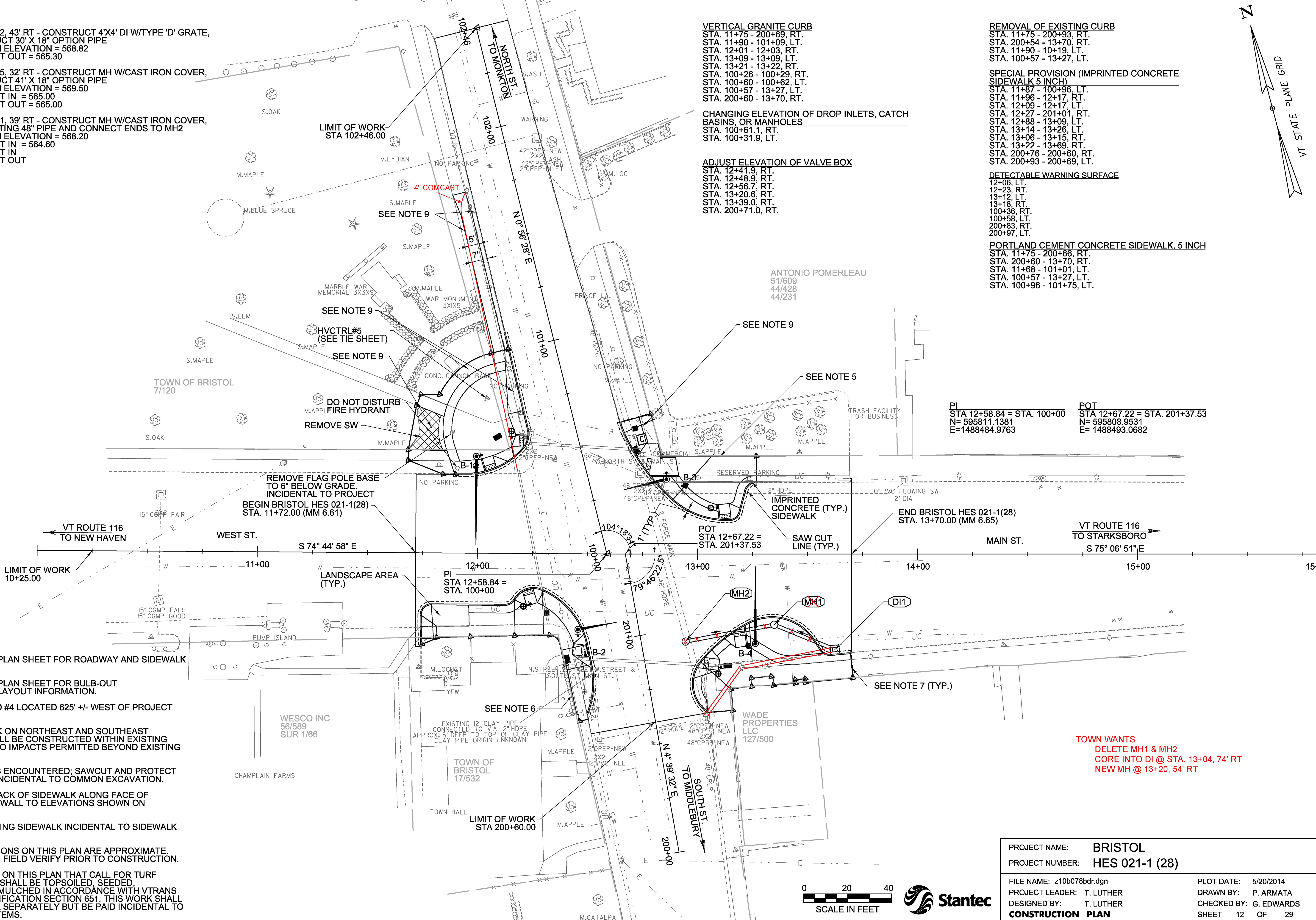
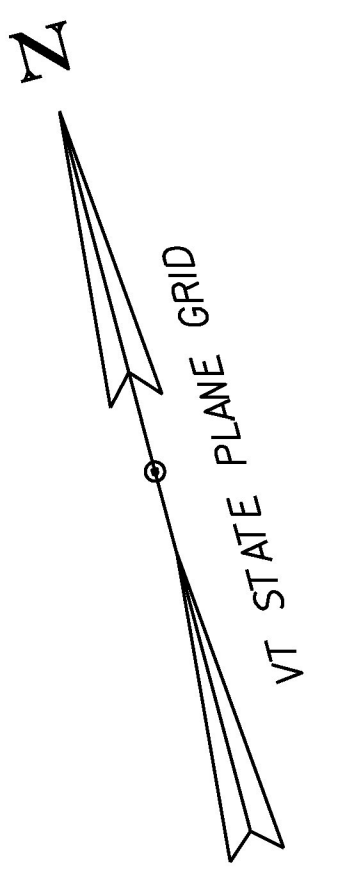


- (DI1) STA. 13+62, 43' RT - CONSTRUCT 4'X4' DI W/TYPE 'D' GRATE, CONSTRUCT 30" X 18" OPTION PIPE
FINAL RIM ELEVATION = 568.82
18" INVERT OUT = 565.30
- (MH1) STA. 13+35, 32' RT - CONSTRUCT MH W/CAST IRON COVER, CONSTRUCT 41" X 18" OPTION PIPE
FINAL RIM ELEVATION = 569.50
18" INVERT IN = 565.00
18" INVERT OUT = 565.00
- (MH2) STA. 12+91, 39' RT - CONSTRUCT MH W/CAST IRON COVER, CUT EXISTING 48" PIPE AND CONNECT ENDS TO MH2
FINAL RIM ELEVATION = 568.20
18" INVERT IN = 564.60
48" INVERT IN
48" INVERT OUT

- VERTICAL GRANITE CURB**
STA. 11+75 - 200+69, RT.
STA. 11+90 - 101+09, LT.
STA. 12+01 - 12+03, RT.
STA. 13+09 - 13+09, LT.
STA. 13+21 - 13+22, RT.
STA. 100+26 - 100+29, RT.
STA. 100+60 - 100+62, LT.
STA. 100+57 - 13+27, LT.
STA. 200+60 - 13+70, RT.
- REMOVAL OF EXISTING CURB**
STA. 11+75 - 200+93, RT.
STA. 200+54 - 13+70, RT.
STA. 11+90 - 10+19, LT.
STA. 100+57 - 13+27, LT.
- SPECIAL PROVISION (IMPRINTED CONCRETE SIDEWALK 5 INCH)**
STA. 11+87 - 100+96, LT.
STA. 11+96 - 12+17, RT.
STA. 12+09 - 12+17, LT.
STA. 12+27 - 201+01, RT.
STA. 12+88 - 13+09, LT.
STA. 13+14 - 13+26, LT.
STA. 13+06 - 13+15, RT.
STA. 13+22 - 13+69, RT.
STA. 200+76 - 200+60, RT.
STA. 200+93 - 200+69, LT.
- CHANGING ELEVATION OF DROP INLETS, CATCH BASINS, OR MANHOLES**
STA. 100+61.1, RT.
STA. 100+31.9, LT.
- ADJUST ELEVATION OF VALVE BOX**
STA. 12+41.9, RT.
STA. 12+48.9, RT.
STA. 12+56.7, RT.
STA. 13+20.6, RT.
STA. 13+39.0, RT.
STA. 200+71.0, RT.
- DETECTABLE WARNING SURFACE**
12+06, LT.
12+23, RT.
13+12, LT.
13+18, RT.
100+36, RT.
100+58, LT.
200+83, RT.
200+97, LT.
- PORTLAND CEMENT CONCRETE SIDEWALK, 5 INCH**
STA. 11+75 - 200+66, RT.
STA. 200+60 - 13+70, RT.
STA. 11+68 - 101+01, LT.
STA. 100+57 - 13+27, LT.
STA. 100+96 - 101+75, LT.

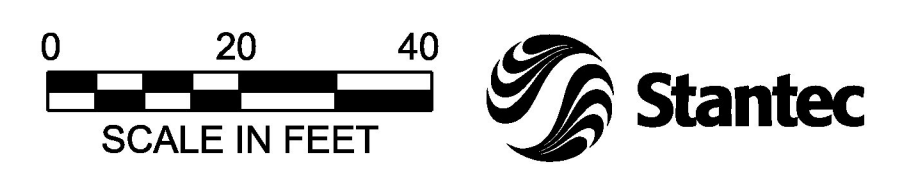


- NOTES:**
1. SEE GRADING PLAN SHEET FOR ROADWAY AND SIDEWALK GRADING.
 2. SEE GRADING PLAN SHEET FOR BULB-OUT CONSTRUCTION LAYOUT INFORMATION.
 3. HVCTRL #3 AND #4 LOCATED 625' +/- WEST OF PROJECT AREA.
 4. NEW SIDEWALK ON NORTHEAST AND SOUTHEAST QUADRANTS SHALL BE CONSTRUCTED WITHIN EXISTING RIGHT OF WAY. NO IMPACTS PERMITTED BEYOND EXISTING RIGHT OF WAY.
 5. IF TREE ROOTS ENCOUNTERED; SAWCUT AND PROTECT PER ENGINEER. INCIDENTAL TO COMMON EXCAVATION.
 6. CONSTRUCT BACK OF SIDEWALK ALONG FACE OF EXISTING STONE WALL TO ELEVATIONS SHOWN ON GRADING PLAN.
 7. SAWCUT EXISTING SIDEWALK INCIDENTAL TO SIDEWALK CONSTRUCTION.
 8. UTILITY LOCATIONS ON THIS PLAN ARE APPROXIMATE. CONTRACTOR TO FIELD VERIFY PRIOR TO CONSTRUCTION.
 9. AREAS SHOWN ON THIS PLAN THAT CALL FOR TURF ESTABLISHMENT SHALL BE TOPSOILED, SEEDED, FERTILIZED AND MULCHED IN ACCORDANCE WITH VTRANS STANDARD SPECIFICATION SECTION 651. THIS WORK SHALL NOT BE PAID FOR SEPARATELY BUT BE PAID INCIDENTAL TO ALL CONTRACT ITEMS.

PI STA 12+58.84 = STA. 100+00
N= 595811.1381
E= 1488484.9763

POT STA 12+67.22 = STA. 201+37.53
N= 595808.9531
E= 1488493.0682

TOWN WANTS
DELETE MH1 & MH2
CORE INTO DI @ STA. 13+04, 74' RT
NEW MH @ 13+20, 54' RT



PROJECT NAME:	BRISTOL
PROJECT NUMBER:	HES 021-1 (28)
FILE NAME:	z10b078bdr.dgn
PROJECT LEADER:	T. LUTHER
DESIGNED BY:	T. LUTHER
CONSTRUCTION PLAN	
PLOT DATE:	5/20/2014
DRAWN BY:	P. ARMATA
CHECKED BY:	G. EDWARDS
SHEET	12 OF 29