

GPS CONTROL POINTS

HVCTRL #1

LATHROP  
 NORTH = 595029.754  
 EAST = 1487003.577  
 ELEV. = 461.658

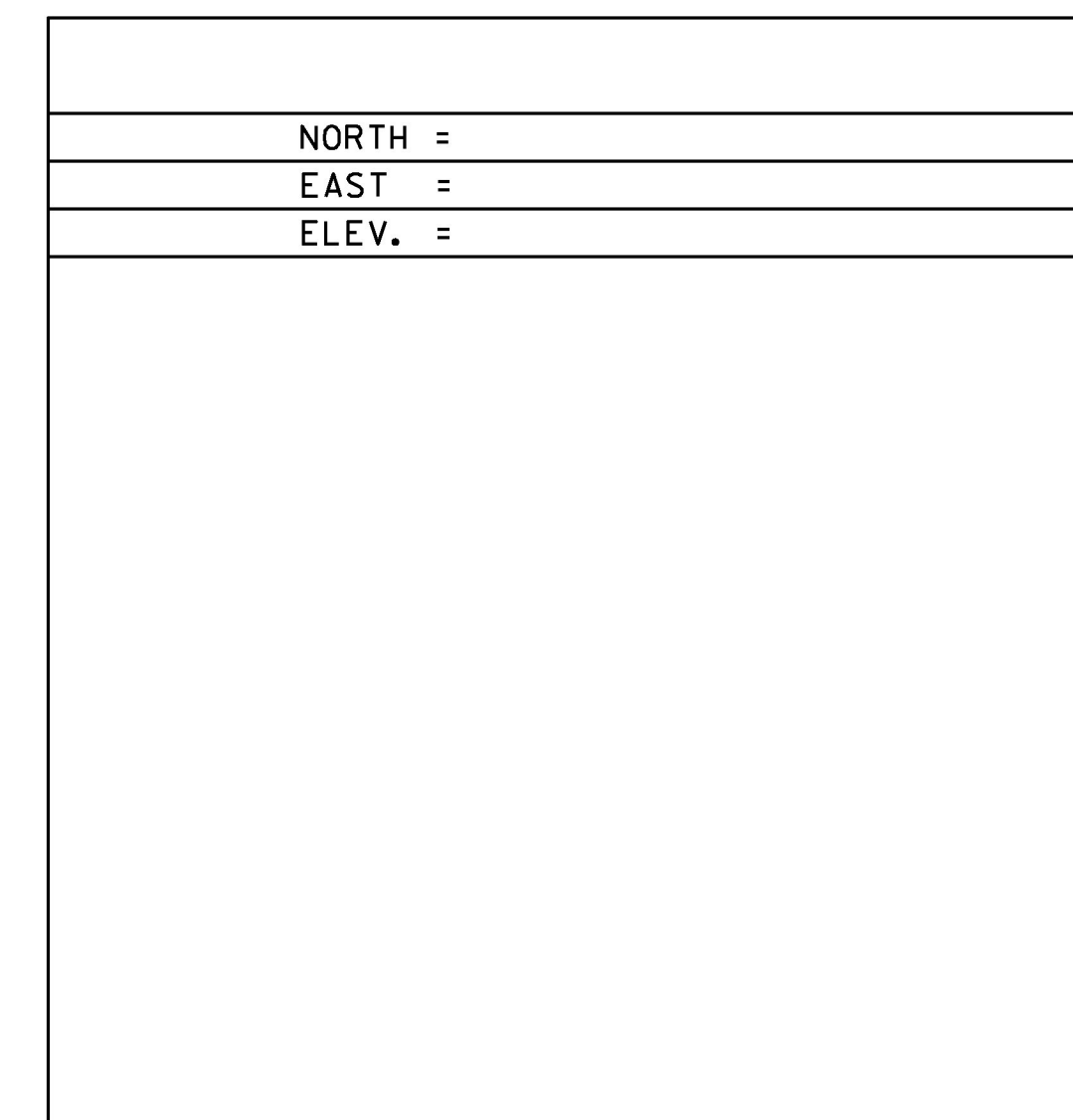
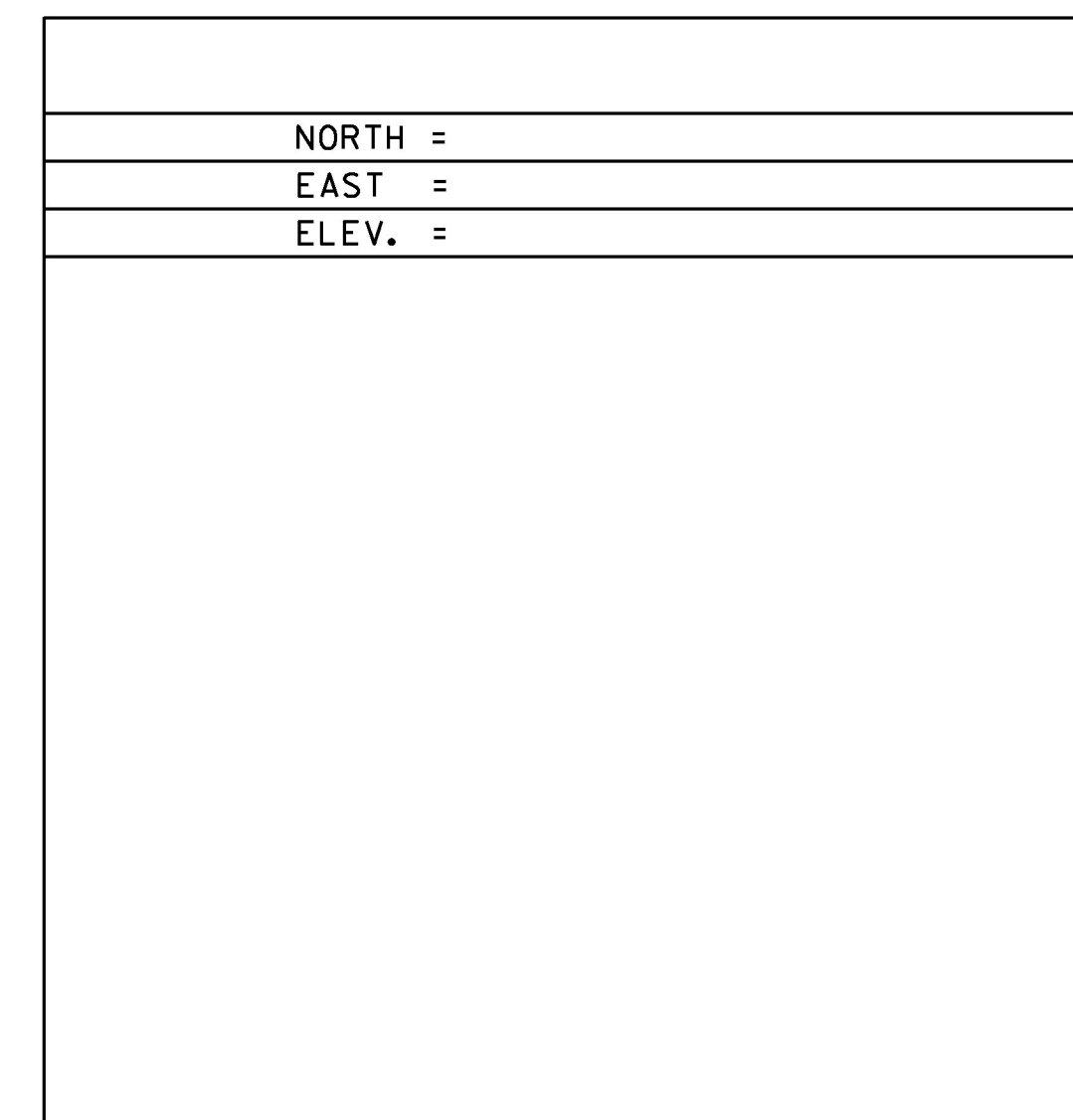
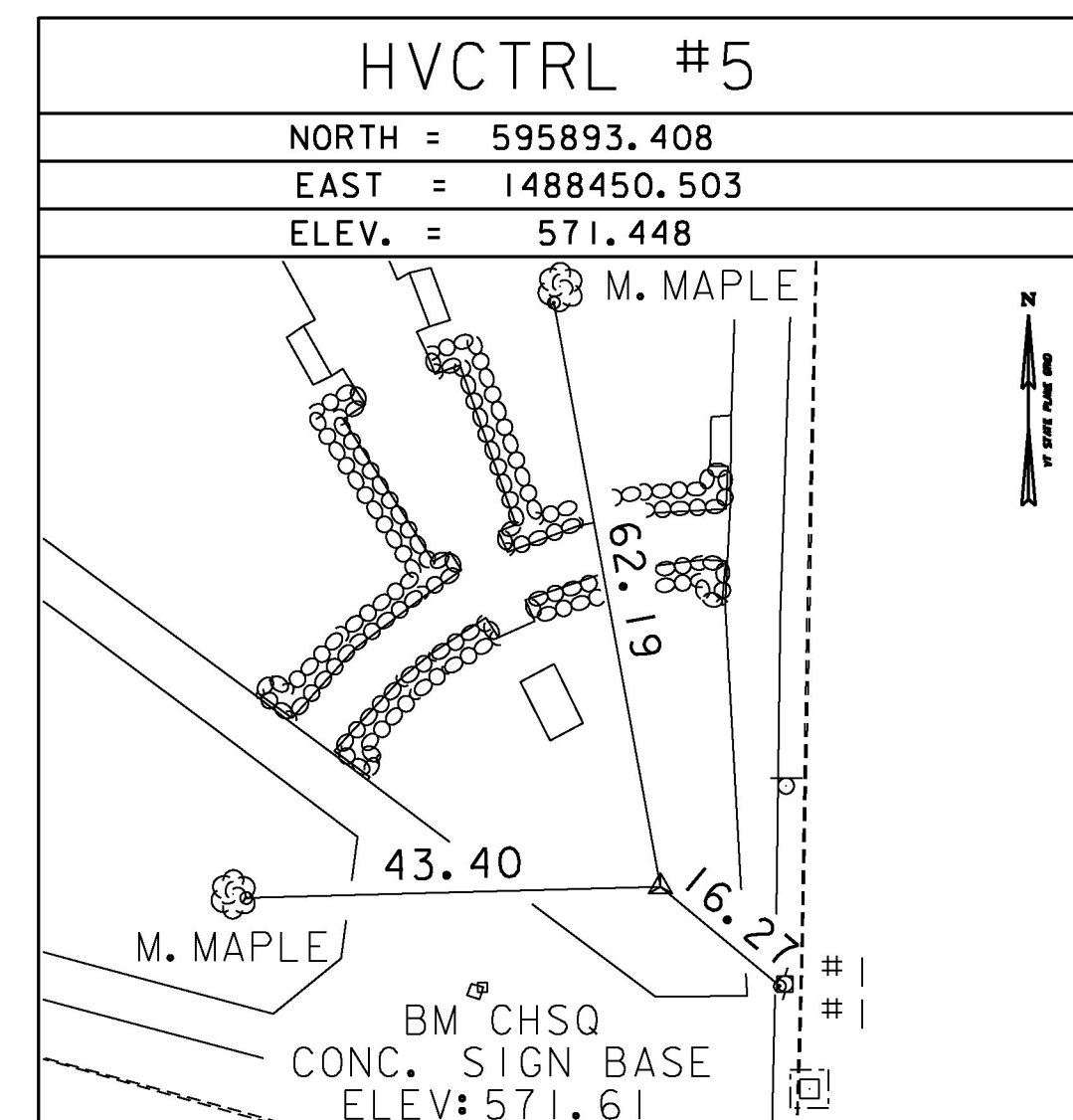
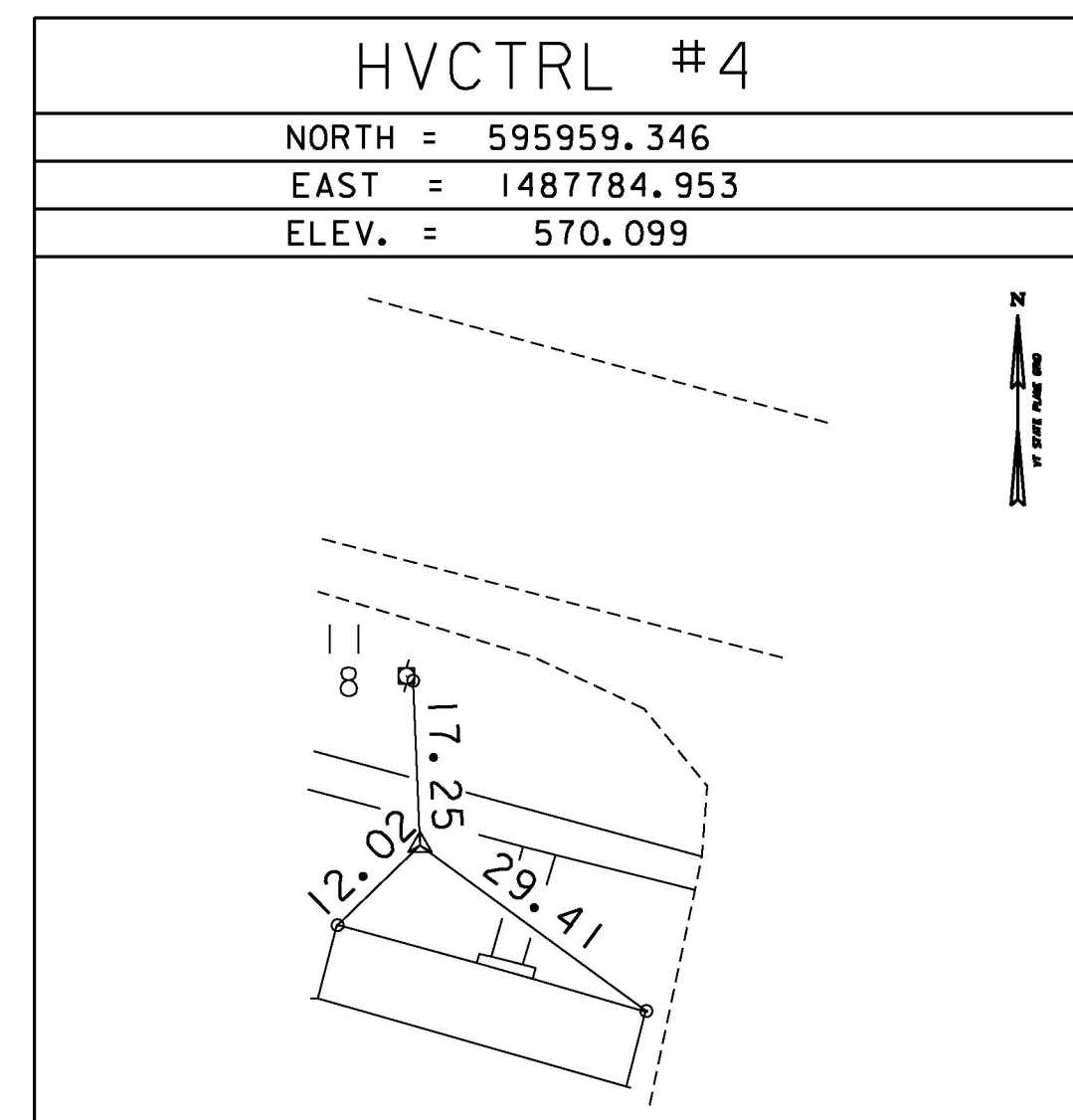
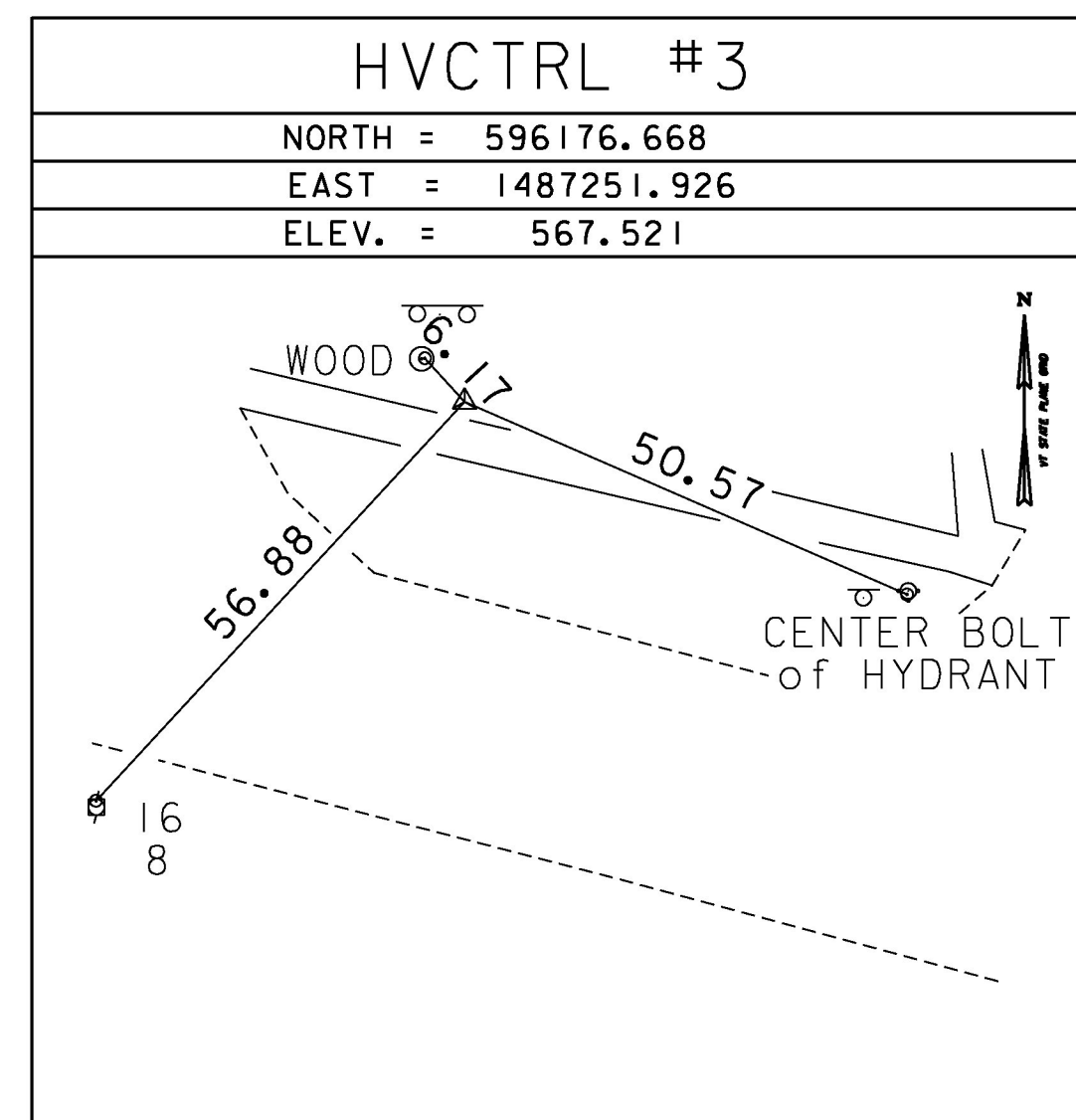
GENERAL LOCATION BRISTOL, VT. OWNERSHIP-- LATHROP LTD, 62 WEST STREET, BRISTOL, VT 05443. TO REACH FROM THE INTERSECTION OF BURPEE ROAD, VT ROUTE 17 AND VT ROUTE 116 SOUTH, JUST WEST OF BRISTOL VILLAGE, GO EAST ALONG VT ROUTES 17/116 FOR 1.1 MI (1.8 KM) TO THE INTERSECTION OF NORTH STREET LEFT AND SOUTH STREET RIGHT AT THE TRAFFIC LIGHT IN BRISTOL VILLAGE. TURN RIGHT AND GO SOUTH ALONG SOUTH STREET FOR 0.4 MI (0.6 KM) TO THE CLARE LATHROP LUMBER YARD ON THE RIGHT AND THE SITE OF THE MARK ON THE LEFT, ABOUT OPPOSITE THE MOST SOUTHERLY GATE TO THE LUMBER YARD. THE MARK IS SET IN THE TOP OF A 1.5 M (4.9 FT) X 1.2 M (3.9 FT) BOULDER WHICH PROJECTS ABOUT 0.8 M ABOVE GROUND SURFACE. IT IS 12.9 M (42.3 FT) EAST OF AND ABOUT 2.2 M (7.2 FT) HIGHER THAN THE CENTERLINE OF SOUTH STREET, 20.6 M (67.6 FT) EAST-NORTHEAST OF POLE NO 11, 22.8 M (74.8 FT) EAST-SOUTHEAST OF THE MOST SOUTHERLY GATE POST OF THE SOUTHERN GATE TO THE LATHROP LUMBER YARD, 41.2 M (135.2 FT) SOUTH-SOUTHWEST OF POLE NO 9, AND 1.7 M (5.6 FT) NORTHWEST OF A FIBERGLASS WITNESS POST.

HVCTRL 32

LATHROP AZ MK  
 NORTH = 596195.437  
 EAST = 1486663.832  
 ELEV. = 565.693

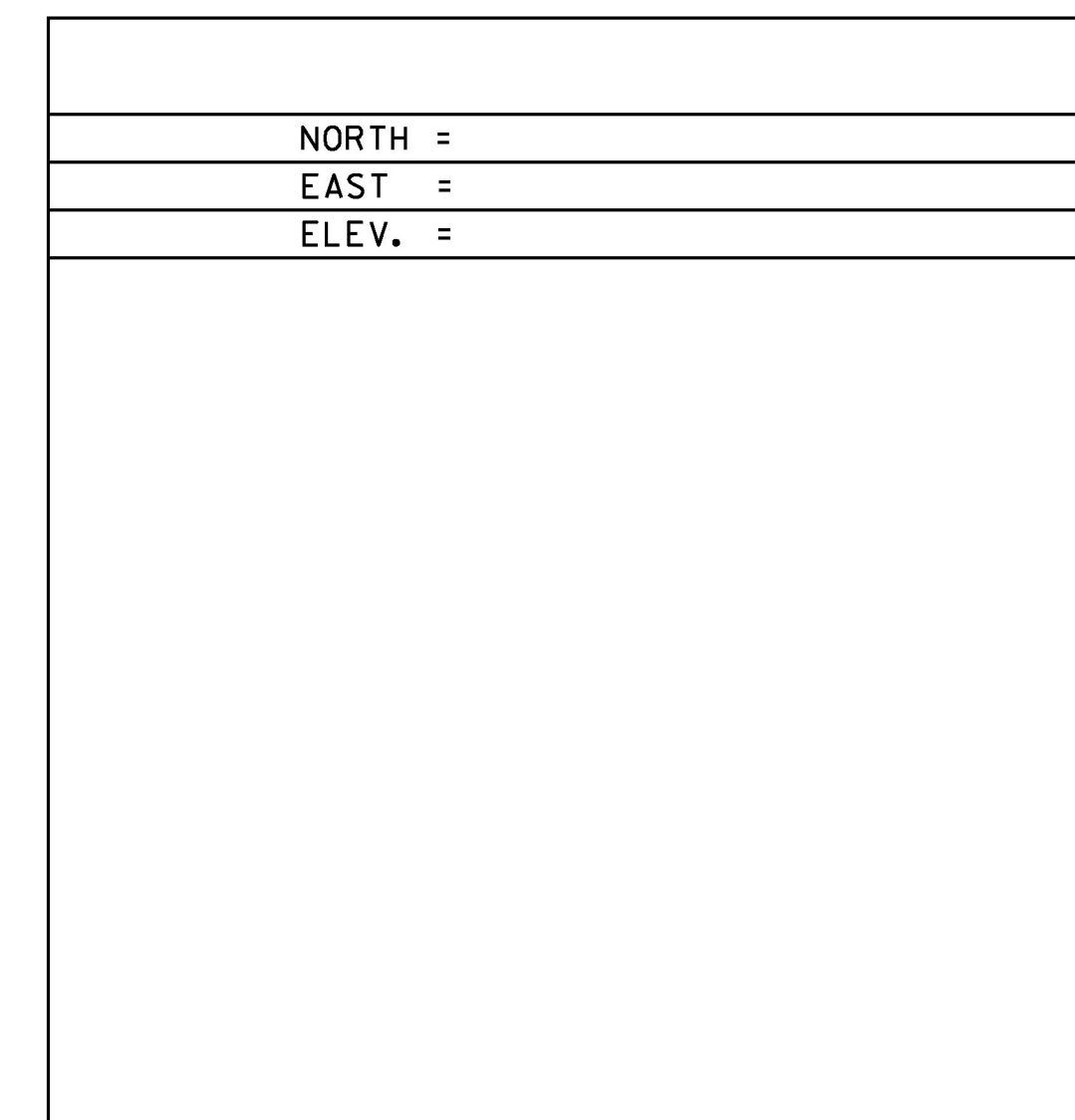
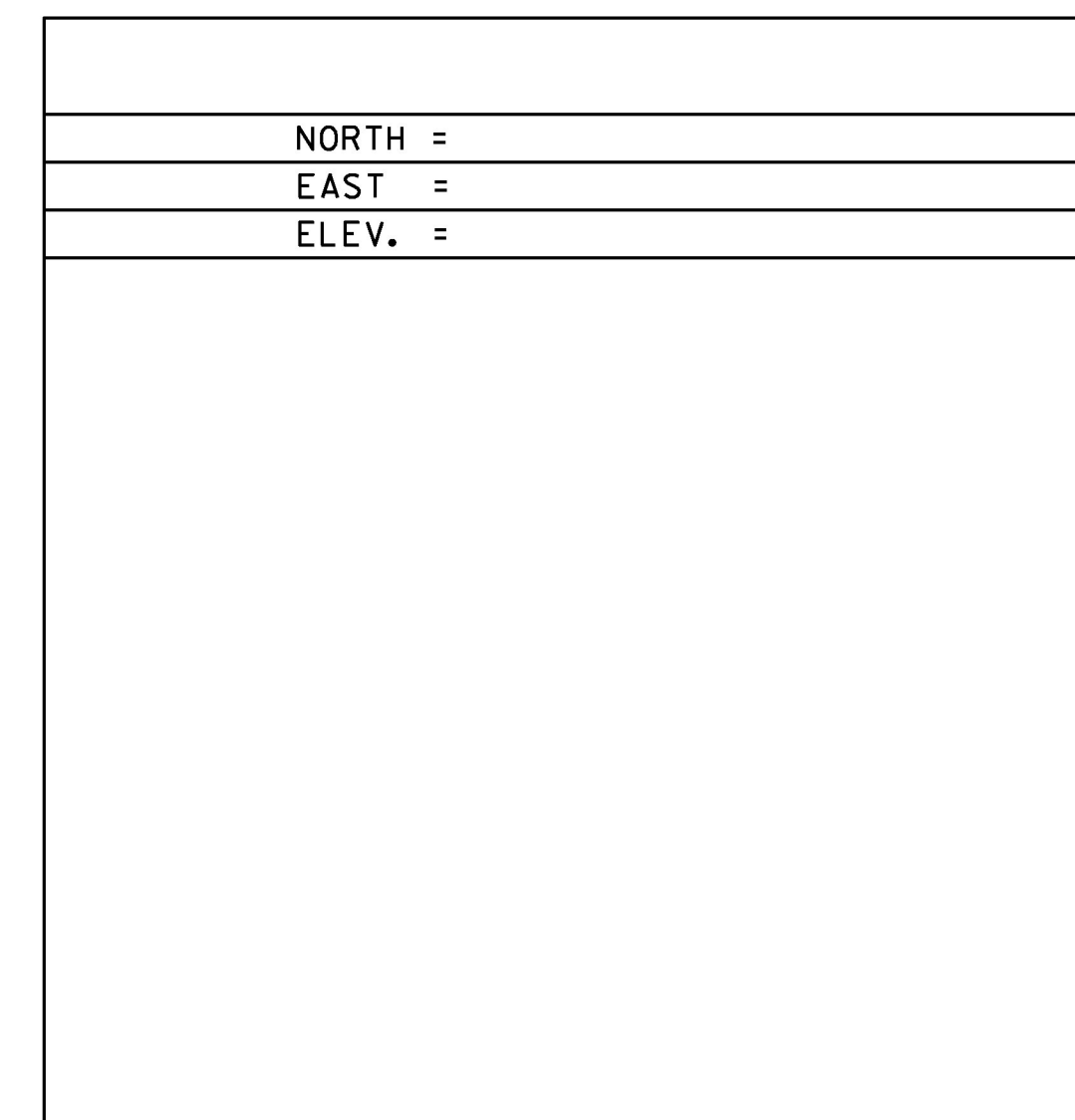
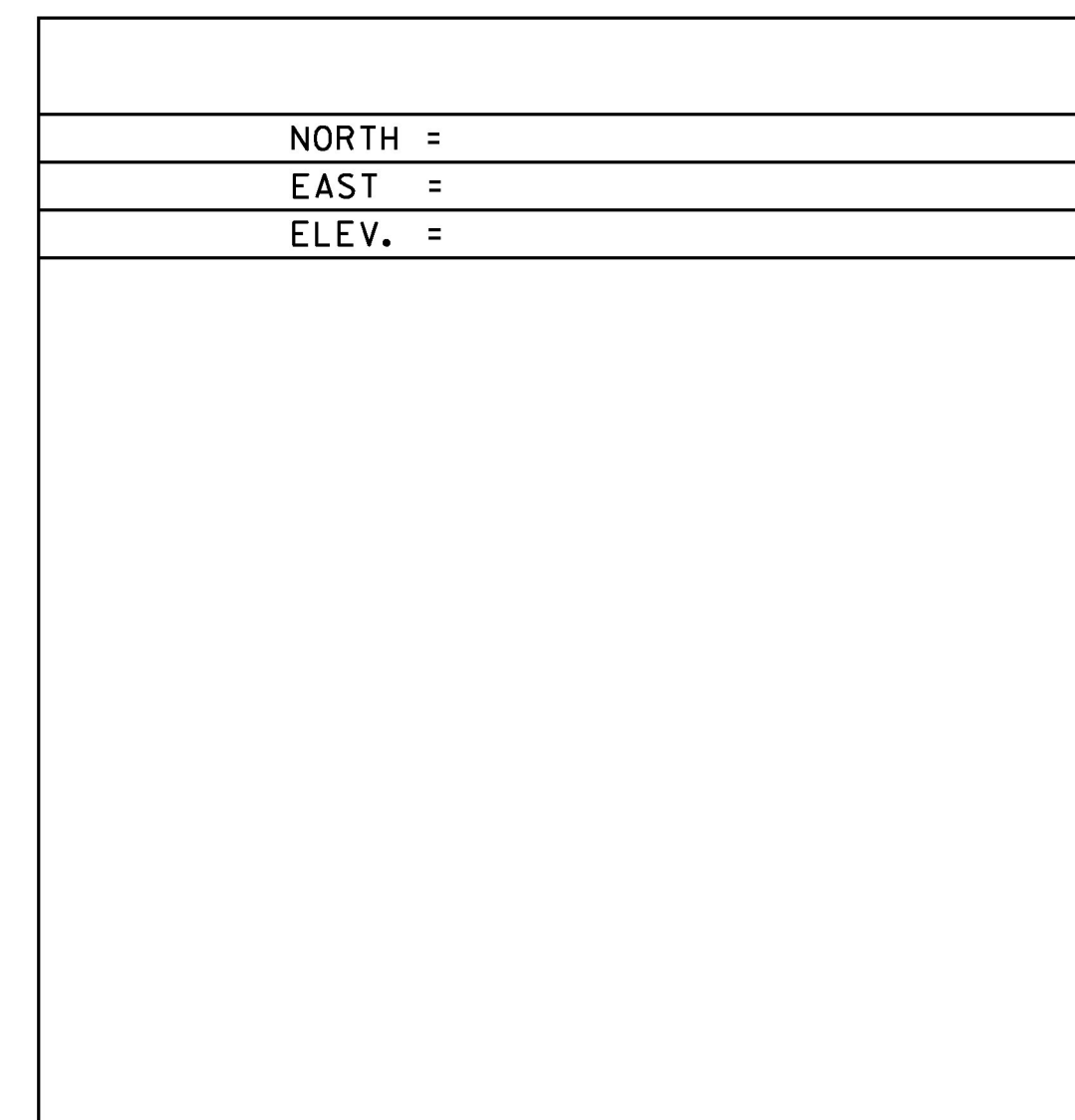
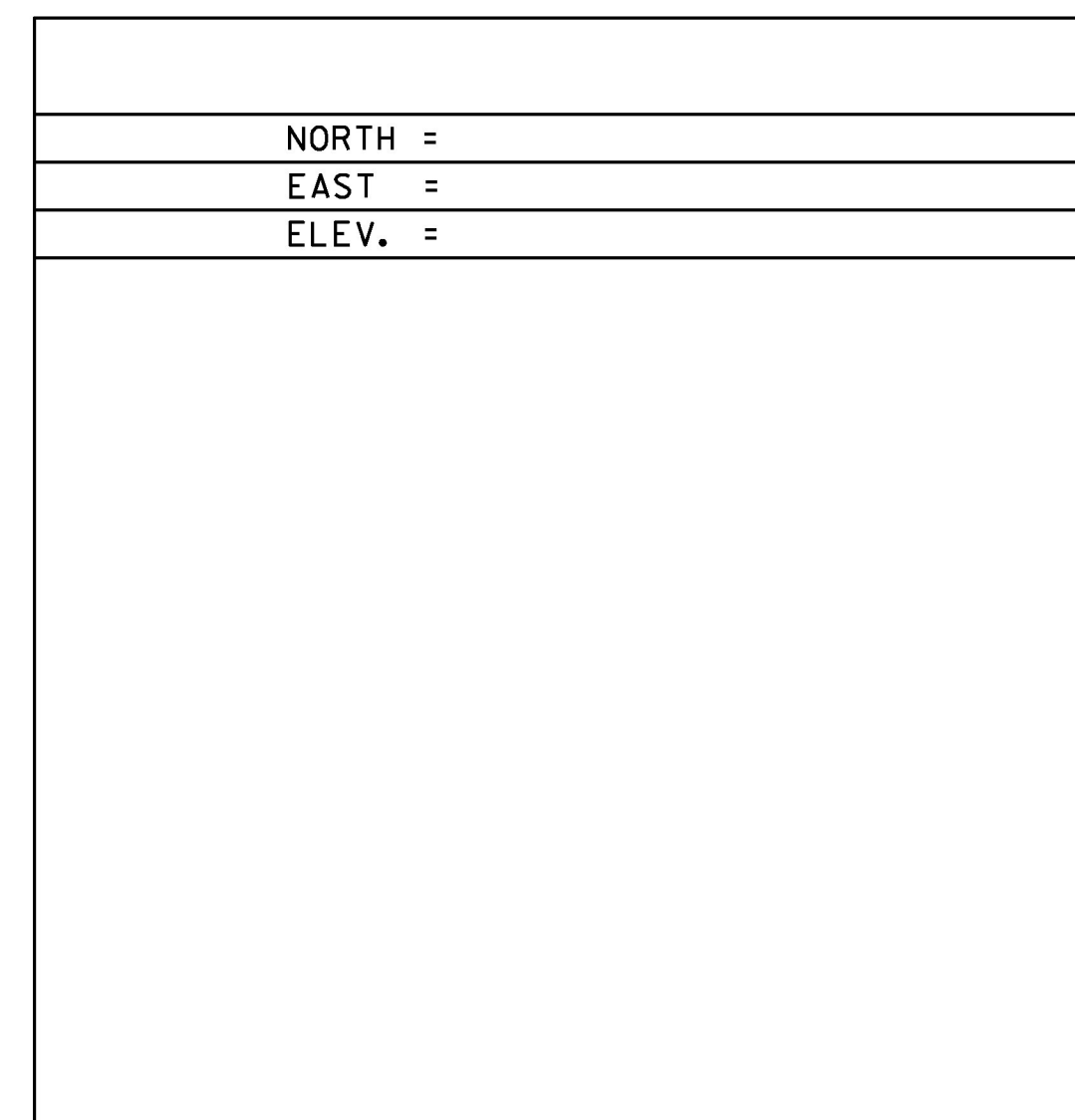
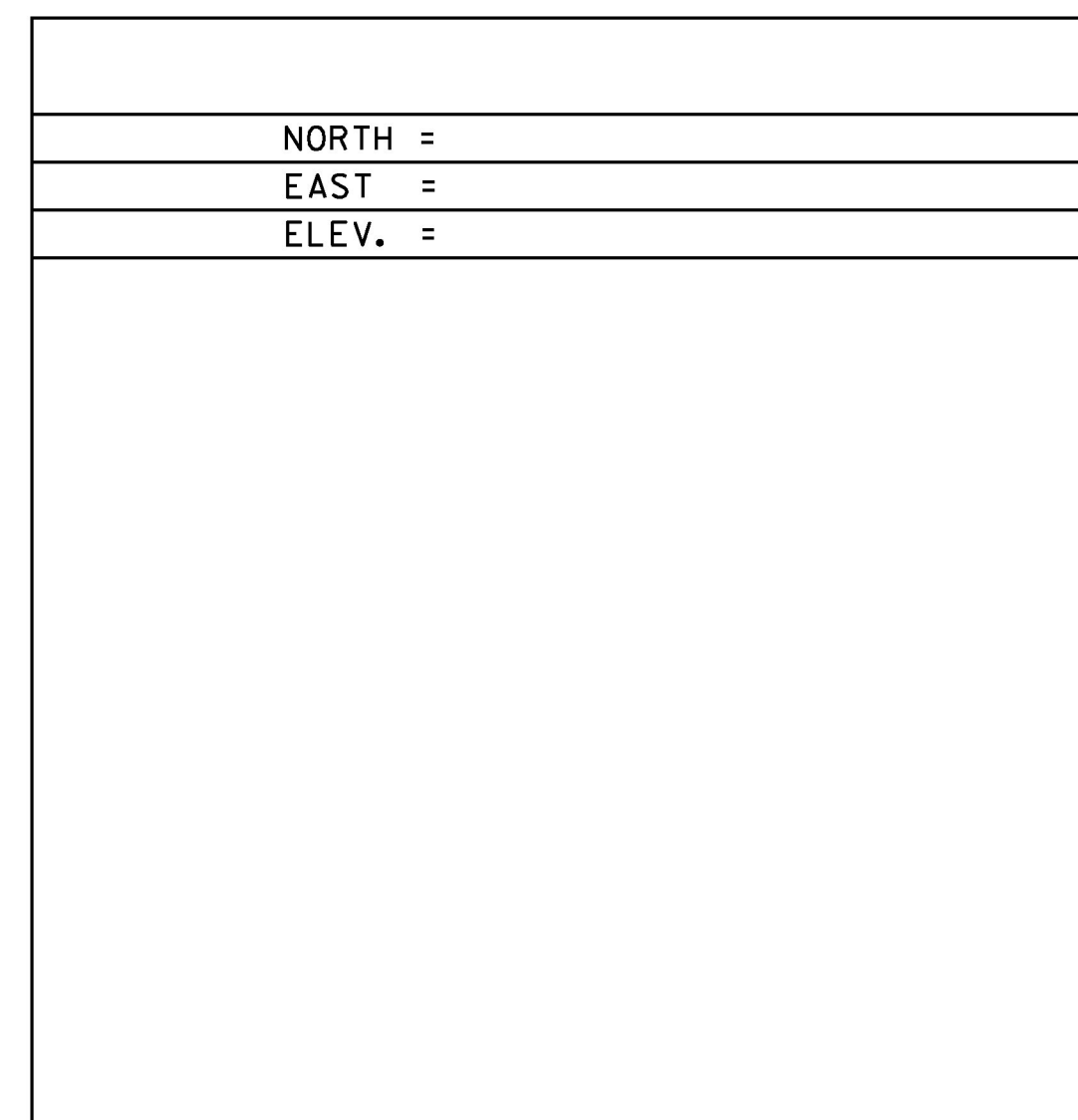
GENERAL LOCATION BRISTOL, VT. TO REACH FROM THE INTERSECTION OF BURPEE ROAD, VT ROUTE 17 AND VT ROUTE 116 SOUTH, JUST WEST OF BRISTOL VILLAGE, GO EAST ALONG VT ROUTES 17/116 FOR 0.8 MI (1.3 KM) TO THE INTERSECTION OF MUNSILL AVENUE LEFT AND THE SITE OF THE MARK ON THE RIGHT. THE MARK IS SET IN THE TOP OF A 30 CM (12 INCHES) DIAMETER CONCRETE MONUMENT POURED 1.4 M (4.6 FT) DEEP. IT IS 6.5 M (21.3 FT) SOUTH OF AND ABOUT 0.3 M (1.0 FT) LOWER THAN THE CENTERLINE OF VT ROUTE 17/116, 1.8 M (5.9 FT) SOUTH OF A STEEL BEAM GUARD RAIL, 21.4 M (70.2 FT) EAST OF POLE NO 21/8/13, 10.7 M (35.1 FT) WEST OF POLE NO 20/12, 2.5 M (8.2 FT) NORTH OF THE TOP OF A STEEP BANK, AND 0.3 M (1.0 FT) NORTH OF A FIBERGLASS WITNESS POST.

TRAVERSE TIES



\*MAIN TRAVERSE COMPLETED 11/04/2010 BY L. ORVIS P.C. & R. BOCKUS

ALIGNMENT TIES



DATUM	
VERTICAL	NAVD 88
HORIZONTAL	NAD 83 (07)
ADJUSTMENT	COMPASS

PROJECT NAME:	BRISTOL
PROJECT NUMBER:	HES 021-1 (28)
FILE NAME:	x10b078ti.dgn
PROJECT LEADER:	T. LUTHER
DESIGNED BY:	T. LUTHER
<b>TIE SHEET</b>	
PLOT DATE:	4/29/2014
DRAWN BY:	R. BULLOCK
CHECKED BY:	P. BEYOR
SHEET	6 OF 29