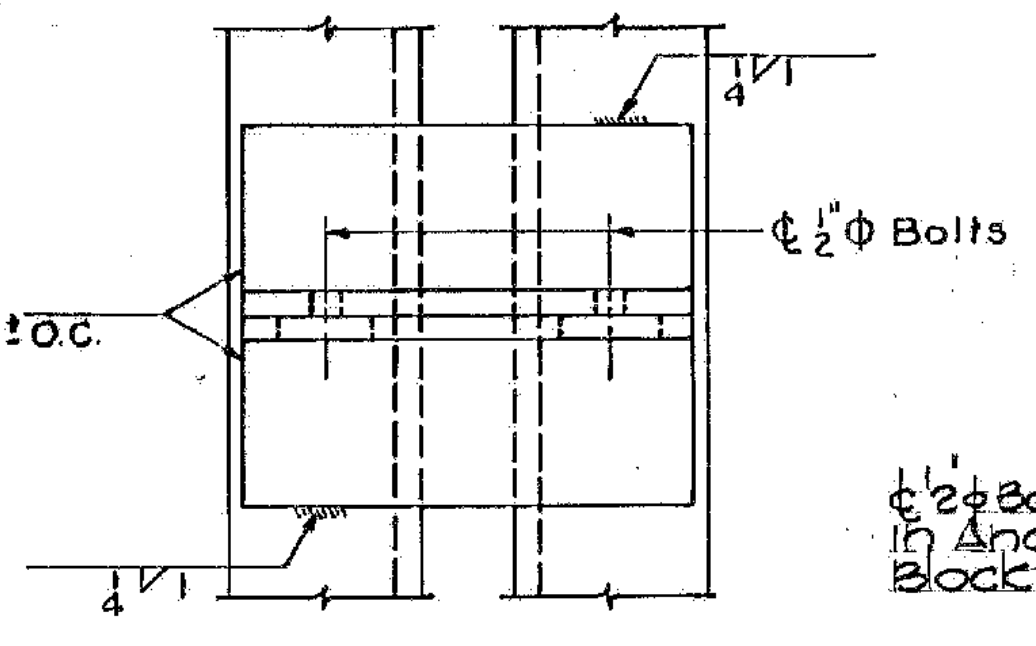
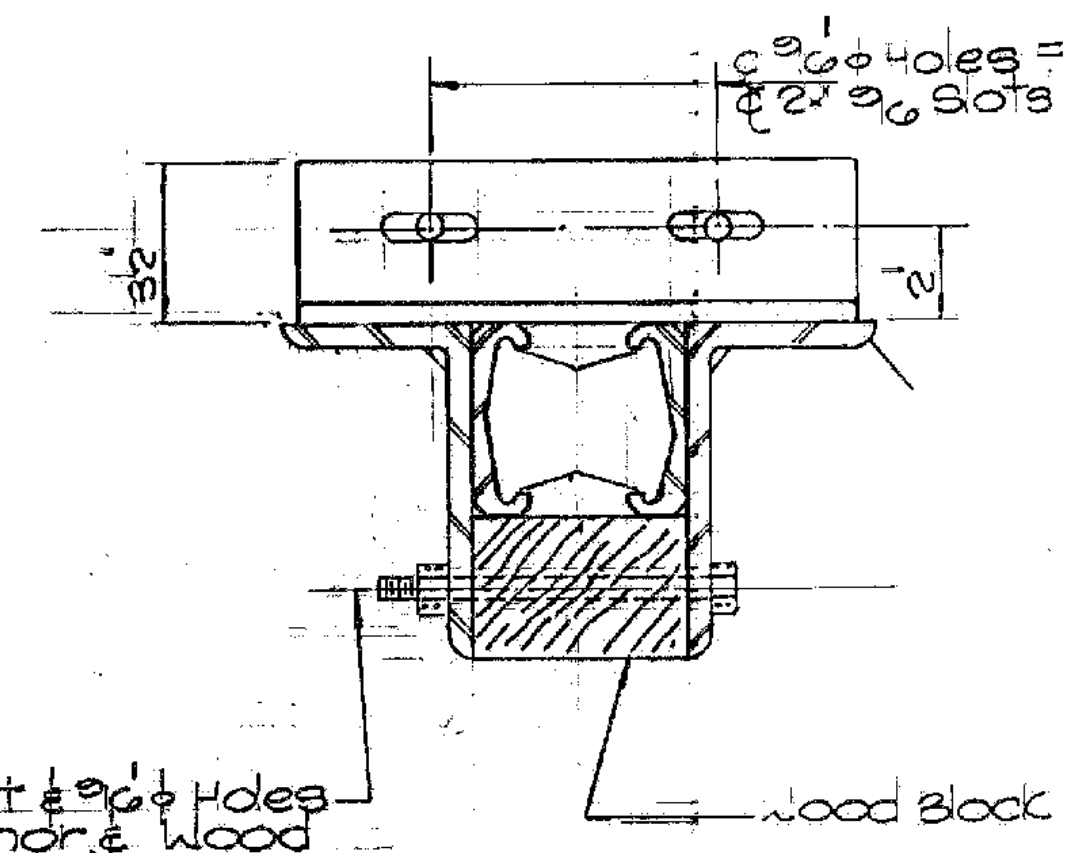


DETAIL A
3" = 1'-0"

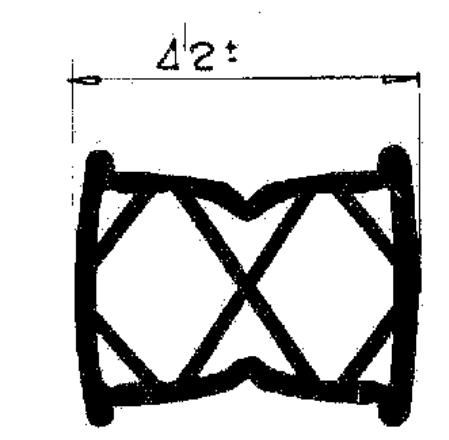


PLAN

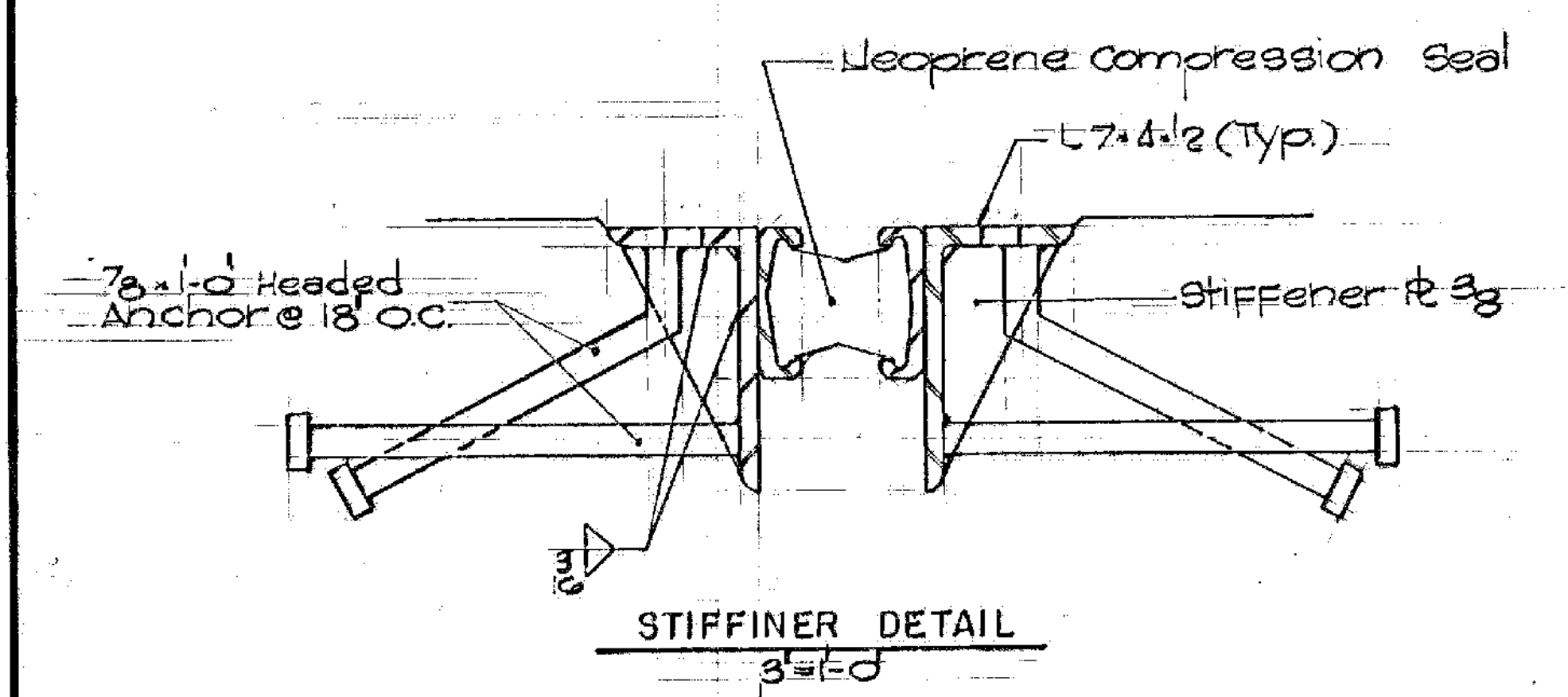
SHIPPING DEVICE
3" = 1'-0"



ELEVATION



NEOPRENE COMPRESSION SEAL
No Scale



STIFFENER DETAIL
3" = 1'-0"

NOTES:

1. For Armored Joint at abutments the Contractor may select either Alternate A or Alternate B joint details and shall submit shop drawings for approval by the Engineer.
2. All Armored Joint Assemblies must be properly fitted in the shop and shipped with the device for maintaining proper spacing and fit.
3. With Armored Joint in place, remove 1/2" Bolt and Wood Block before anchoring to Bridge.
4. Armored Joint Assembly shall be secured to the Beams and/or Anchor Bolts when the ambient temperature is between 40°F and 80°F. No field adjustment of opening "Y" is permitted. Shipping Device must be removed after Armored Joint is securely bolted in place.
5. Grind Armored Joint surface to a smooth finish after removal of back to back angles.
6. All Steel components shall be A.S.T.M. A-36 Galvanized, or Metalized as per Section 731.00, unless otherwise noted.
7. Dimension "Y" is set in the Shop by the Fabricator.
8. For Detail "A" Location, see Sheet 5586.
9. All welds are 3/8" continuous fillets, except as noted.
10. A length of steel pipe may be substituted for the Wood Block spacer.

ALBURGH-ROUSES POINT
BHF MEMB(24)
SHEET 49 OF 50
FOR REFERENCE ONLY

ALTERNATE "A"

STATE OF VERMONT
AGENCY OF TRANSPORTATION

TOWN OF ROUSES POINT N.Y. - ALBURGH VT.	Bridge No. 1
HIGHWAY NO. ROUTE 2	Log Sta. 0+00
	Surv. Sta.

ROADWAY ARMORED JOINT - DETAILS (STEEL ALTERNATE)			
Designed by S.M.	Drawn by R.D.F.		
Checked by S.H.R.	Bridge Design Supervisor		
date 11-14-84	C.J.M./S.M.	date 11-14-84	
PROJECT ROUSES POINT BRIDGE REPLACEMENT	PROJECT NO. BRF 028-1(11)		
Bridge Sheet No. 5587	Sheet	of	

HNTB
HOWARD NEEDLES TAMMEN & BERGENDOFF